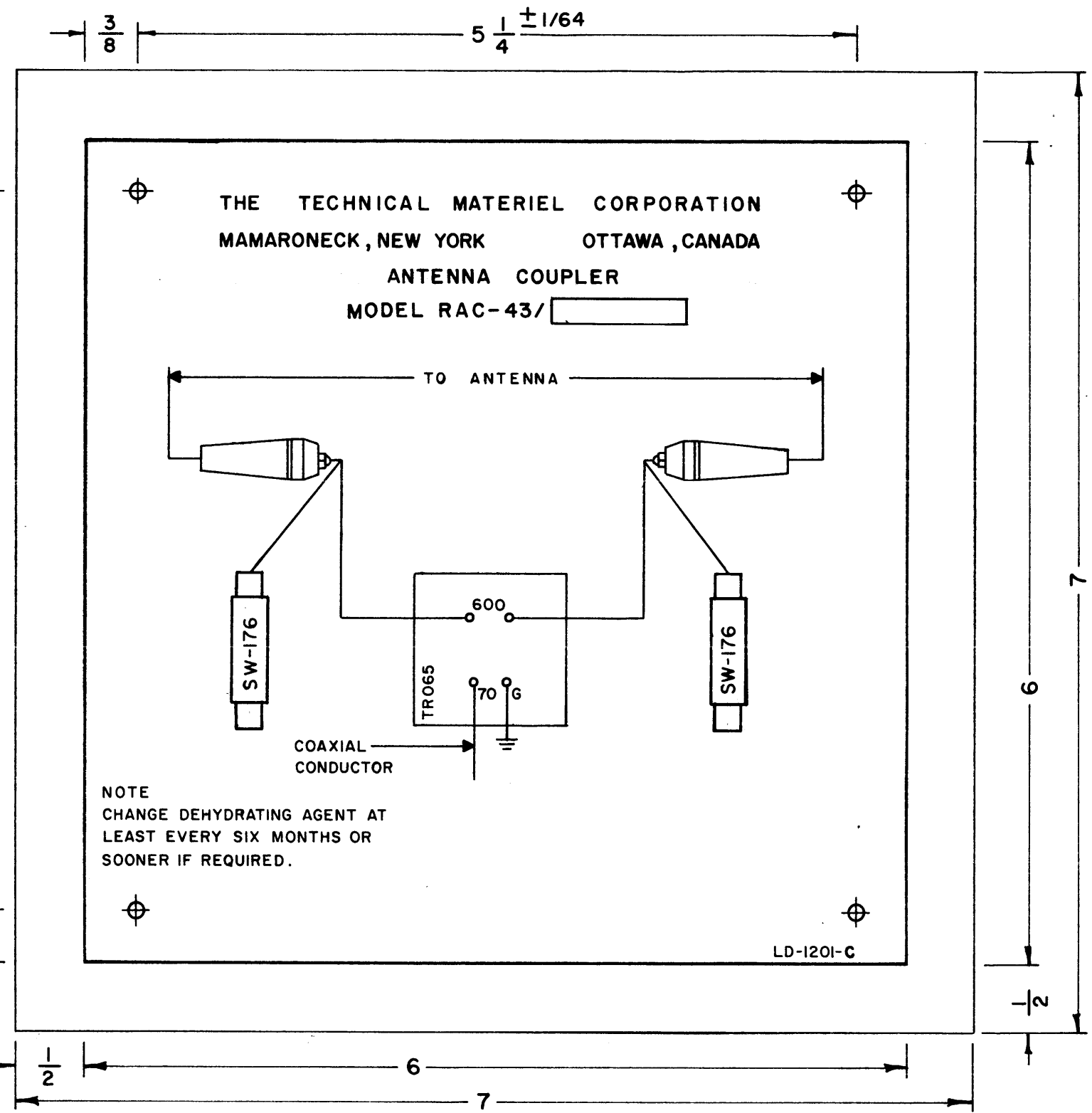


LD-1201

THE CONTENTS OF THIS DRAWING ARE THE EXCLUSIVE PROPERTY OF THE TECHNICAL MATERIEL CORP. ITS UNAUTHORIZED USE OR REPRODUCTION IN WHOLE OR IN PART IS STRICTLY FORBIDDEN.

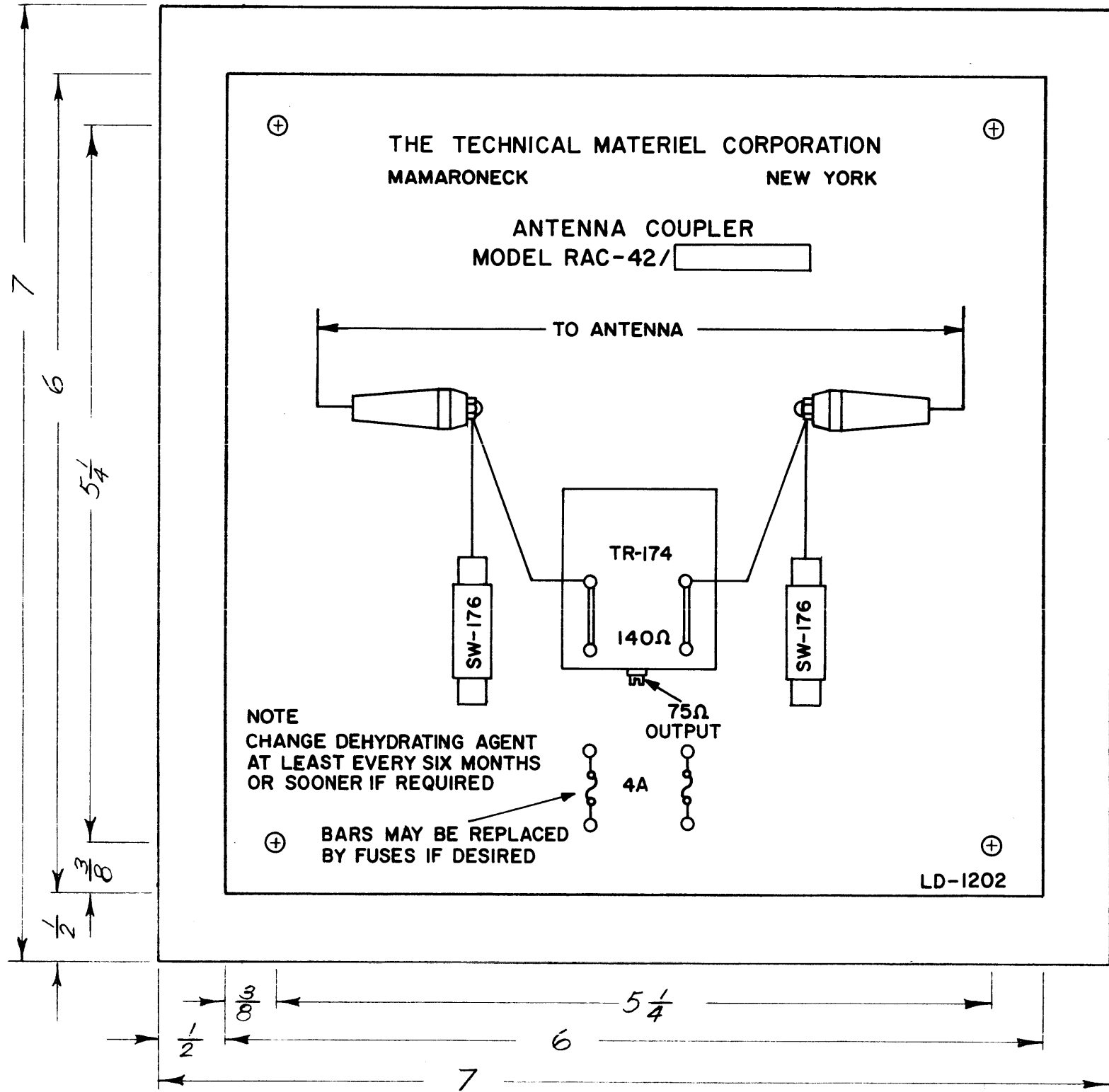


- NOTE:
1. PRINTED DIRECTLY ON FACE OF PLASTIC.
  2. MATERIAL: POLISHED WHITE OPAQUE VINYL PLASTIC, .015 THK.
  3. 3/16 X 1 BLOCK, AREA TO BE UNPOLISHED.
  4. MTG HOLES 7/64 (.109) DIA. 4 REQ.

C	MODEL* RELOCATED NOTES UPDATED	7.31.64	11821	WJB	<i>[Signature]</i>	<i>[Signature]</i>
B	SPARK GAP REPLACED WITH SW-176	8-12-63	9768	HC	<i>[Signature]</i>	<i>[Signature]</i>
A	OTTAWA, CANADA ADDED TO HEADING	5-29-63	9185	<i>[Signature]</i>	<i>[Signature]</i>	<i>[Signature]</i>
SYM	DESCRIPTION	DATE	CH. NO.	DRAFTS	CHECKER	ENG. APP.
UNLESS OTHERWISE SPECIFIED:		SCALE:				
DIMENSIONS ARE IN INCHES		MAXIMUM ALLOWABLE TOLERANCES HAVE BEEN DETERMINED AND ANY DEVIATIONS WILL BE CAUSE FOR REJECTION. REMOVE ALL BURRS AND SHARP EDGES				
TOLERANCES ON FRACTIONS ± 1/64 DECIMALS ± .005 ANGLES ± 1/2°						

1	RAC-43			3-21-63
REQ. PER UNIT	MODEL	SECTION	ASS'Y. NO.	DATE
USED ON				

REQ.	ITEM	PART NO.	R. HAY.	DESCRIPTION	SYMBOL
		.015 THK. STOCK SIZE		THE TECHNICAL MATERIEL CORP. MAMARONECK, NEW YORK	
		SEE NOTE 2		SCHEMATIC DIAGRAM	
		MATERIAL		MODEL RAC-43	
			<i>[Signature]</i>	<i>[Signature]</i> 3/23/63	<i>[Signature]</i>
				DRAWN	CHECKED
				TYPE & TEMPER	HEAT TREAT. SPEC.
				SEE NOTE	
				FINISH & SPEC. NO.	ELEC. DES. APP. MECH. DES. APP.
					LD-1201
					C



NOTE  
CHANGE DEHYDRATING AGENT  
AT LEAST EVERY SIX MONTHS  
OR SOONER IF REQUIRED

⊕ BARS MAY BE REPLACED  
BY FUSES IF DESIRED

LD-1202

LD-1202

REVISIONS						
SYM	DESCRIPTION	DATE	E.M.N. NO.	DRAFT	CHKD	APPD

- NOTE:
1. PRINTED DIRECTLY ON FACE OF PLASTIC.
  2. MATERIAL: POLISHED WHITE OPAQUE VINYL PLASTIC, .015 THK.
  3. 3/16 X 1 BLOCK, AREA TO BE UNPOLISHED.

4 HOLES REQ.  
7/64 (.109) DIA.

NOTES

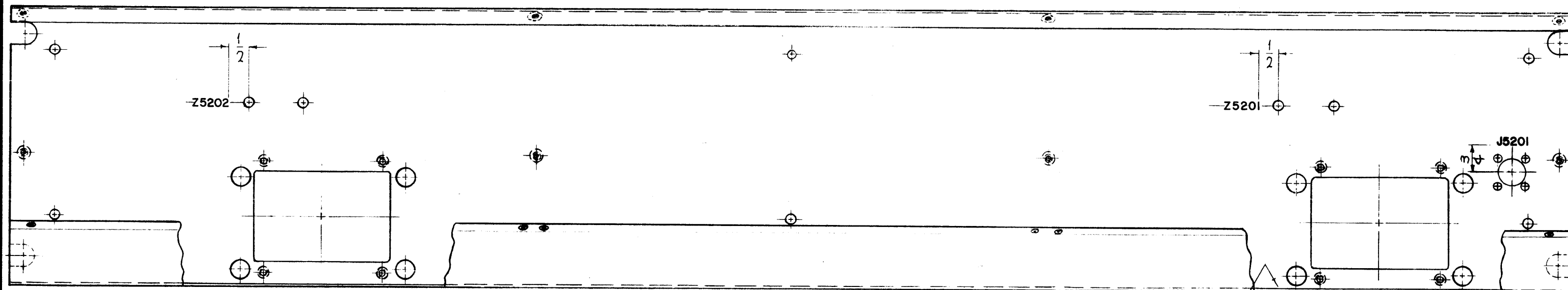
1	RAC-42	
QTY./UNIT	MODEL USED ON	ASS'Y. NO.
SCALE	CODE	
FULL		

THE CONTENTS OF THIS DRAWING ARE THE EXCLUSIVE PROPERTY OF THE TECHNICAL MATERIEL CORP. ITS UNAUTHORIZED USE OR REPRODUCTION IN WHOLE OR IN PART IS STRICTLY FORBIDDEN.

REQ'D.	ITEM	PART NUMBER	DESCRIPTION	SYMBOL
LIST OF MATERIAL				
MATERIAL			THE TECHNICAL MATERIEL CORP. MAMARONECK, NEW YORK	
SEE NOTE			TITLE SCHEMATIC DIAGRAM MODEL RAC-42	
FINISH			DRAWN P. CHENAVULT	
SEE NOTE			DATE 4-2-63.	FINAL APPROVAL BP
UNLESS OTHERWISE SPECIFIED DIMENSIONS ARE IN INCHES AND INCLUDE CHEMICALLY APPLIED OR PLATED FINISHES			CHECKED JDO	DATE 4/6/63
			DATE	DATE
DECIMALS .X ± .05 .XX ± .01 .XXX ± .005			ELECT. DES. DATE	
FRACTIONS ± 1/64 ANGLES ± 0° 30'			MECH. DES. DATE	
TOLERANCES			LD-1202	
			SHEET	
			REV. LTR.	

LD-1214 0

THE CONTENTS OF THIS DRAWING ARE THE EXCLUSIVE PROPERTY OF THE TECHNICAL MATERIEL CORP. ITS UNAUTHORIZED USE OR REPRODUCTION IN WHOLE OR IN PART IS STRICTLY FORBIDDEN.



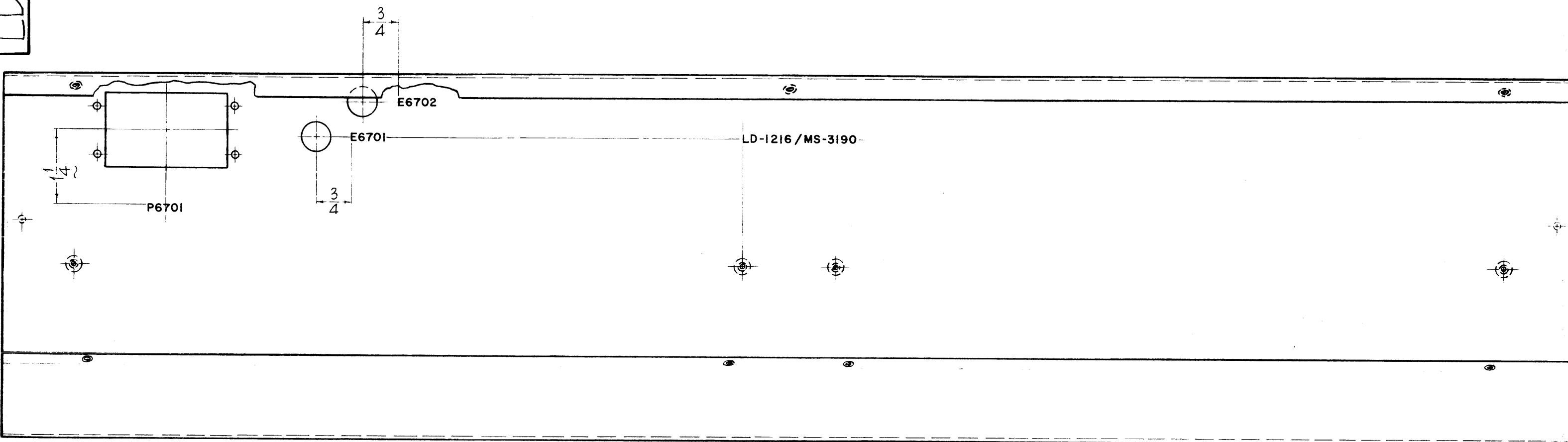
FRONT VIEW SHOWN

MARK LD-1214- /MS-3188- ,WITH LATEST REVISIONS ON THIS SURFACE.

<b>MARKING PROCESS: AS PER TMC SPECIFICATION 8-727.</b> <b>LETTERING: 1/8 HIGH WHITE GOTHIC, LOCATED AS SHOWN.</b>		REQ.	ITEM	PART NO.	F. BUDETTI	DESCRIPTION	SYMBOL	
						THE TECHNICAL MATERIEL CORP. MAMARONECK, NEW YORK		
ORIGINAL RELEASE FOR PRODUCTION SYM      DESCRIPTION      DATE      CH. NO.      DRAFTS      CHECKER      ENG. APP.					MARKING, FRONT PA METER BOX MARKING METHOD-AS PER TMC SPEC. S-727			
					John C. Biele      JCB      RJC			
UNLESS OTHERWISE SPECIFIED: DIMENSIONS ARE IN INCHES      CODE TOLERANCES ON      A FRACTIONS ± 1/64      DECIMALS ± .005      ANGLES ± 1/2° MAXIMUM ALLOWABLE TOLERANCES HAVE BEEN DETERMINED AND ANY DEVIATIONS WILL BE CAUSE FOR REJECTION. REMOVE ALL BURRS AND SHARP EDGES		SCALE: 3/8" = 1"			DRAWN      CHECKED      FINAL APPROVAL			
		1      GPT-200K      AM-118      8-14-63			JCB      JCB      LD-1214 0			
		REQ. PER UNIT	MODEL	SECTION	ASS'Y. NO.	DATE	FINISH & SPEC. NO.	
		USED ON						

LD-1216 0

THE CONTENTS OF THIS DRAWING ARE THE EXCLUSIVE PROPERTY OF THE TECHNICAL MATERIEL CORP. ITS UNAUTHORIZED USE OR REPRODUCTION IN WHOLE OR IN PART IS STRICTLY FORBIDDEN.

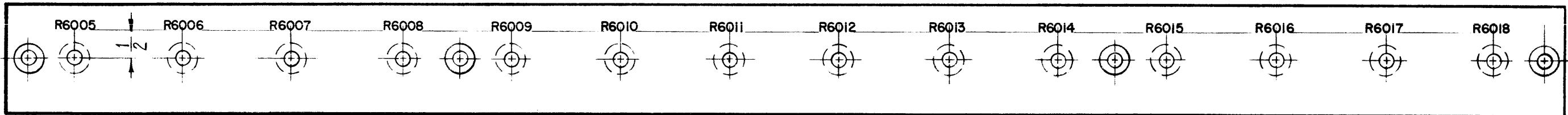


FRONT VIEW SHOWN

<p>MARKING PROCESS: AS PER TMC SPECIFICATION S-727.</p> <p>LETTERING: 1/8 HIGH WHITE GOTHIC, LOCATED AS SHOWN.</p>						REQ.	ITEM	PART NO.	F. BUDETTI	DESCRIPTION	SYMBOL
						STOCK SIZE			THE TECHNICAL MATERIEL CORP. MAMARONECK, NEW YORK		
MATERIAL			LETTERING, FRONT METER BOX, P/S-"B"								
<p>UNLESS OTHERWISE SPECIFIED:</p> <p>DIMENSIONS ARE IN INCHES</p> <p>TOLERANCES ON FRACTIONS ± 1/64 DECIMALS ± .005 ANGLES ± 1/2°</p> <p>SCALE: 1/2" = 1"</p> <p>MAXIMUM ALLOWABLE TOLERANCES HAVE BEEN DETERMINED AND ANY DEVIATIONS WILL BE CAUSE FOR REJECTION. REMOVE ALL BURRS AND SHARP EDGES</p>			DATE	CH. NO.	DRAFTS	CHECKER	ENG. APP.	<p>John C Biele</p> <p>AA</p> <p>RC</p>	<p>TYPE &amp; TEMPER</p> <p>HEAT TREAT. SPEC.</p> <p>DRAWN</p> <p>CHECKED</p> <p>FINAL APPROVAL</p>		
<p>ORIGINAL RELEASE FOR PRODUCTION</p> <p>5-13-64</p> <p>0</p> <p>A.M.</p> <p><i>RC</i></p>	<p>1</p> <p>GPT-200K</p> <p>REQ. PER UNIT</p>		<p>AM-120</p> <p>ASS'Y. NO.</p>		<p>8-14-63</p> <p>DATE</p>		<p>FINISH &amp; SPEC. NO.</p> <p>ELEC. DES. APP. MECH. DES. APP.</p>		<p>LD-1216 0</p>		

LD-1224 0

REVISIONS						
SYM	DESCRIPTION	DATE	E.M.N. NO.	DRAFT	CHKD	APPD
0	ORIGINAL RELEASE FOR PRODUCTION	5.12.64		WB		



— FRONT VIEW SHOWN —

DEF - TMC DWG. PX-728

**MARKING PROCESS: AS PER TMC SPECIFICATION S-727.**  
**LETTERING: 1/8 HIGH WHITE GOTHIC, LOCATED AS SHOWN**

Q'TY./UNIT	MODEL USED ON	ASS'Y. NO.
1	GPT-200K	AP-109
SCALE	CODE	

REQ'D.	ITEM	PART NUMBER	DESCRIPTION	SYMBOL
F. BUDETTI		LIST OF MATERIAL		
MATERIAL		THE TECHNICAL MATERIEL CORP. MAMARONECK, NEW YORK		
FINISH		TITLE LETTERING, TOP RESISTOR MOUNTING BOARD		
UNLESS OTHERWISE SPECIFIED DIMENSIONS ARE IN INCHES AND INCLUDE CHEMICALLY APPLIED OR PLATED FINISHES		DRAWN John C. Biele CHECKED aa ELEC. DES. WB MECH. DES. WCC	DATE 9/7/62 DATE 3/16/64 DATE 5/12/66	FINAL APPROVAL Roe LD-1224 SHEET
DECIMALS .X ± .05 .XX ± .01 .XXX ± .005	TOLERANCES	FRACTIONS ± 1/64 ANGLES ± 0° 30'		0
				REV. LTR.

NOTES

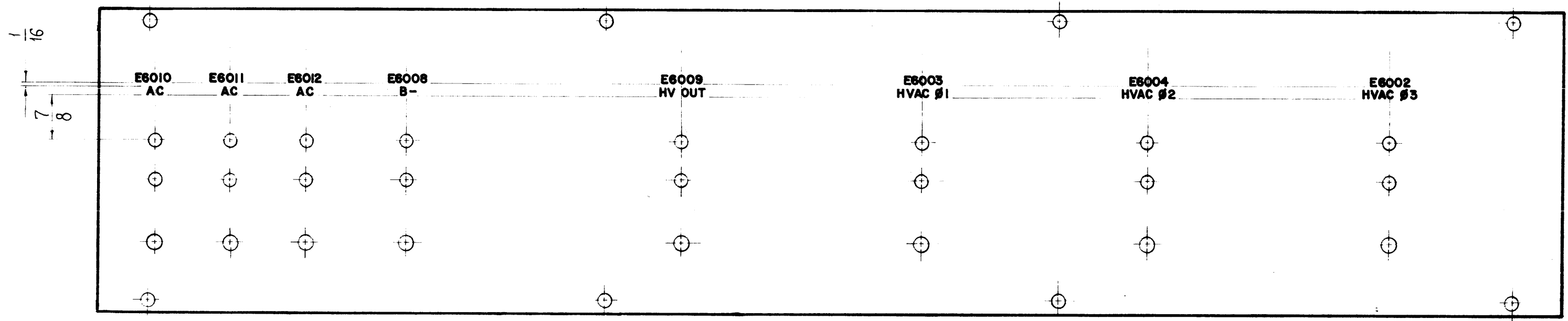
THE CONTENTS OF THIS DRAWING ARE THE EXCLUSIVE PROPERTY OF THE TECHNICAL MATERIEL CORP. ITS UNAUTHORIZED USE OR REPRODUCTION IN WHOLE OR IN PART IS STRICTLY FORBIDDEN.



LD-1226

**REVISIONS**

SYM	DESCRIPTION	DATE	E.M.N. NO.	DRAFT	CHKD	APPD
0	ORIGINAL RELEASE FOR PRODUCTION	5.18.64		MB		



FRONT VIEW SHOWN

MARKING PROCESS: AS PER TMC SPEC. S727.  
 LETTERING: 1/8 HIGH WHITE GOTHIC LOCATED AS SHOWN UNLESS OTHERWISE SPECIFIED.

REF. TMC DWG PX-730

1	GPT-200-K	AP-109
Q'TY./UNIT	MODEL USED ON	ASS'Y. NO.
SCALE	CODE	

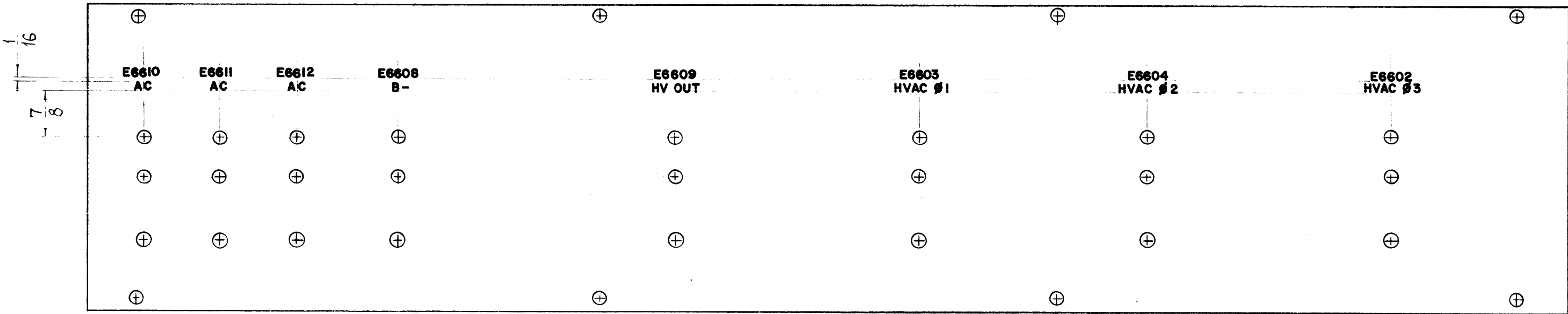
REQ'D.	ITEM	PART NUMBER	DESCRIPTION	SYMBOL
F. BUDETTI		LIST OF MATERIAL		
MATERIAL		THE TECHNICAL MATERIEL CORP. MAMARONECK, NEW YORK		
FINISH		TITLE LETTERING, H.V. CONTACT BOARD (HVB MATING)		
UNLESS OTHERWISE SPECIFIED DIMENSIONS ARE IN INCHES AND INCLUDE CHEMICALLY APPLIED OR PLATED FINISHES		DRAWN J.F. VITBO	DATE	FINAL APPROVAL
DECIMALS .X ± .05 .XX ± .01 .XXX ± .005		CHECKED <i>MB</i>	DATE	DATE
FRACTIONS ± 1/64 AN LES ± 0° 30'		ELECT. DES. <i>MB</i>	DATE 3/16/67	DATE
TOLERANCES		MECH. DES. <i>MB</i>	DATE	DATE
THE CONTENTS OF THIS DRAWING ARE THE EXCLUSIVE PROPERTY OF THE TECHNICAL MATERIEL CORP. ITS UNAUTHORIZED USE OR REPRODUCTION IN WHOLE OR IN PART IS STRICTLY FORBIDDEN.		SHEET		REV. LTR.

NOTES

LD-1227

**REVISIONS**

SYM	DESCRIPTION	DATE	E.M.N. NO.	DRAFT	CHKD	APPD
0	ORIGINAL RELEASE FOR PRODUCTION	5.18.64		JB		



~ FRONT VIEW SHOWN ~

MARKING PROCESS: AS PER TMC SPEC S727.  
 LETTERING: 1/8 HIGH WHITE GOTHIC LOCATED AS SHOWN UNLESS OTHERWISE SPECIFIED.

REF: PX-730

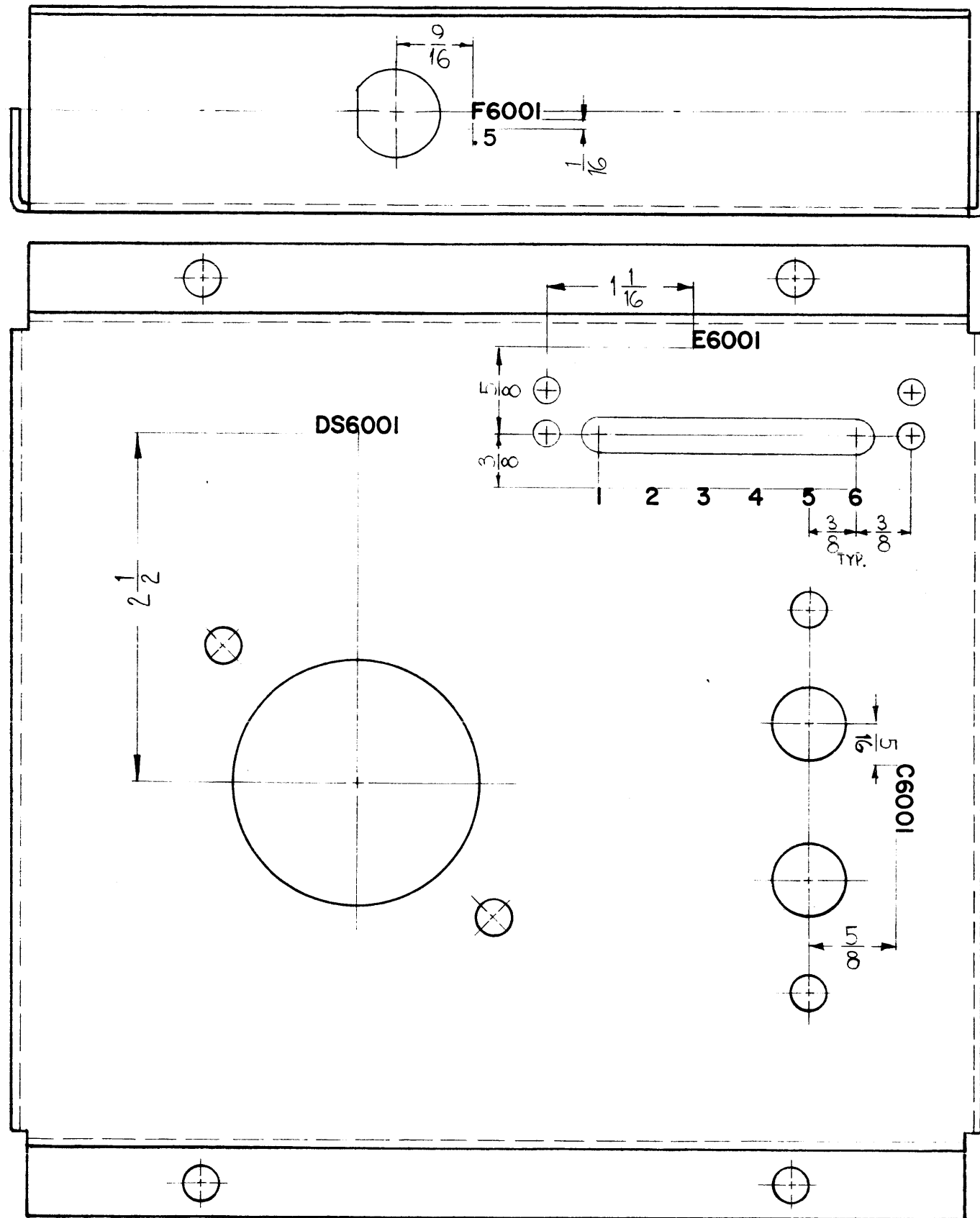
1	GPT-200K	AP-111
Q'TY./UNIT	MODEL USED ON	ASS'Y. NO.
SCALE	CODE	

REQ'D.	ITEM	PART NUMBER	DESCRIPTION	SYMBOL
F. BUDETTI		LIST OF MATERIAL		
MATERIAL		THE TECHNICAL MATERIEL CORP. MAMARONECK, NEW YORK		
FINISH		TITLE LETTERING, H.V. CONTACT BOARD (HVR MATING)		
UNLESS OTHERWISE SPECIFIED DIMENSIONS ARE IN INCHES AND INCLUDE CHEMICALLY APPLIED OR PLATED FINISHES		DRAWN W.A. FRANCO	DATE 4-25-63	FINAL APPROVAL Rde
DECIMALS .X ± .05 .XX ± .01 .XXX ± .005		CHECKED aa	DATE 3/16/64	LD-1227
FRACTIONS ± 1/64 ANGLES ± 0° 30'		ELECT. DES. JB	DATE 3/12/64	0
TOLERANCES		MECH. DES. WQ	DATE	REV. LTR.

**NOTES**

THE CONTENTS OF THIS DRAWING ARE THE EXCLUSIVE PROPERTY OF THE TECHNICAL MATERIEL CORP. ITS UNAUTHORIZED USE OR REPRODUCTION IN WHOLE OR IN PART IS STRICTLY FORBIDDEN.





LD-1229 0

**REVISIONS**

SYM	DESCRIPTION	DATE	E.M.N. NO.	DRAFT	CHKD	APPD
X2	.5 ADDED TO F6001	10-15-63				
0	ORIGINAL RELEASE FOR PRODUCTION	5.18.64			JSB	

REF-TMC DWG. MS-3207

REQ'D.	ITEM	PART NUMBER	DESCRIPTION	SYMBOL
--------	------	-------------	-------------	--------

F. BUDETTI LIST OF MATERIAL

MATERIAL	THE TECHNICAL MATERIEL CORP. MAMARONECK, NEW YORK		
FINISH	TITLE LETTERING, LAMP MTG. CHASSIS		

MARKING PROCESS AS PER TMC SPECIFICATION S-727  
LETTERING: 1/8 HIGH BLACK GOTHIC, LOCATED AS SHOWN!

1	GPT-200K	AP-109
Q'TY./UNIT	MODEL USED ON	ASS'Y. NO.
SCALE	CODE	

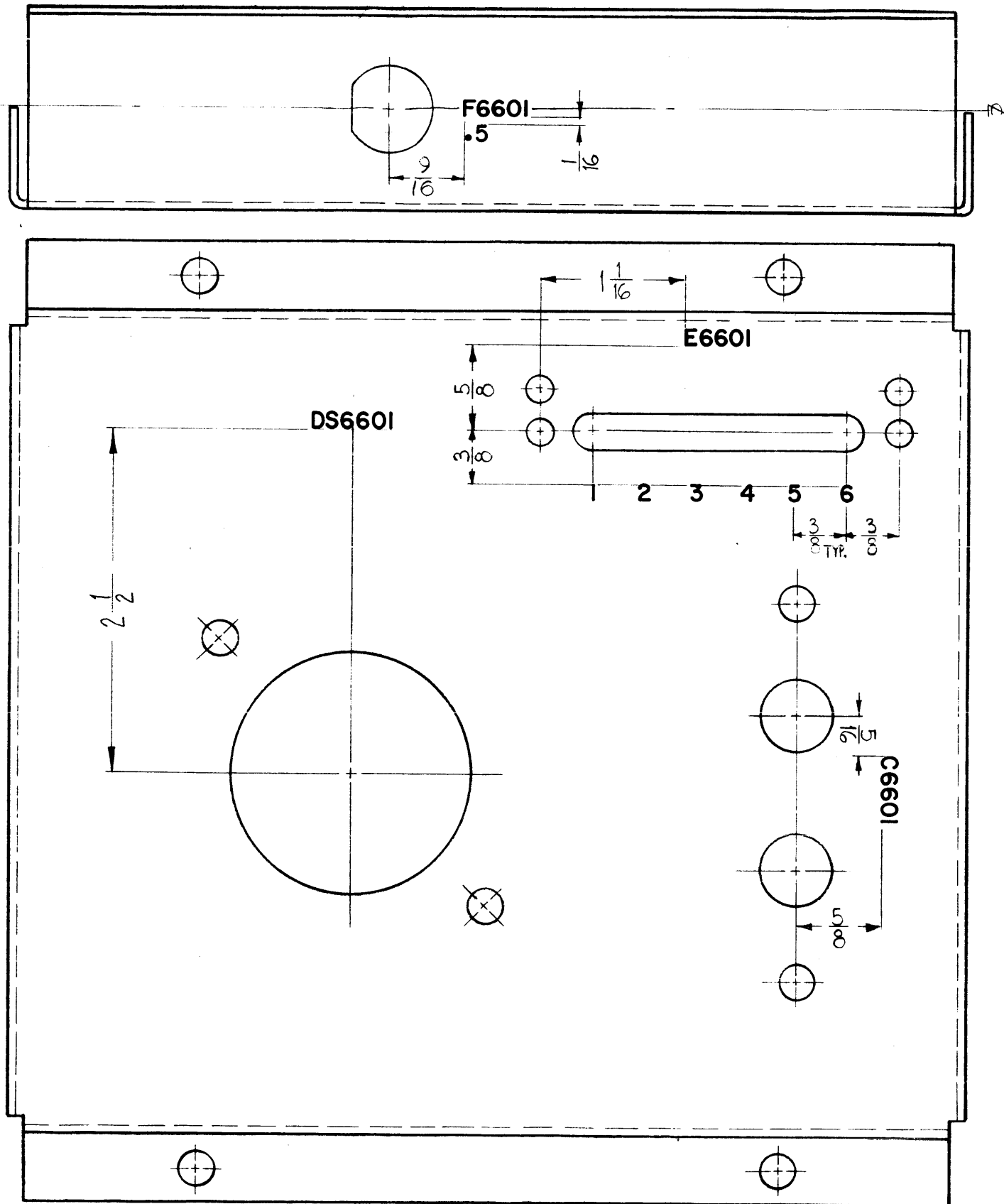
THE CONTENTS OF THIS DRAWING ARE THE EXCLUSIVE PROPERTY OF THE TECHNICAL MATERIEL CORP. ITS UNAUTHORIZED USE OR REPRODUCTION IN WHOLE OR IN PART IS STRICTLY FORBIDDEN.

UNLESS OTHERWISE SPECIFIED DIMENSIONS ARE IN INCHES AND INCLUDE CHEMICALLY APPLIED OR PLATED FINISHES

DECIMALS	FRACTIONS
.X ± .05	± 1/64
.XX ± .01	ANGLES
.XXX ± .005	± 0° 30'

DRAWN John C. Biele	DATE	FINAL APPROVAL	DATE
CHECKED aa	DATE	RJC	
MECH. DES. me	DATE 9/16/64	LD-1229	0
		SHEET	REV. LTR.

**NOTES**



LD-1230 0

REVISIONS

SYM	DESCRIPTION	DATE	E.M.N. NO.	DRAFT	CHKD	APPD
X2	.5 ADDED TO F6601	10-15-63				
0	ORIGINAL RELEASE FOR PRODUCTION	5.18.64			hst	

REF-TMC DWG. MS-3207

REQ'D.	ITEM	PART NUMBER	DESCRIPTION	SYMBOL
--------	------	-------------	-------------	--------

F. BUDETTI LIST OF MATERIAL

MATERIAL THE TECHNICAL MATERIEL CORP.  
MAMARONECK, NEW YORK

FINISH TITLE  
LETTERING, LAMP MTG. CHASSIS

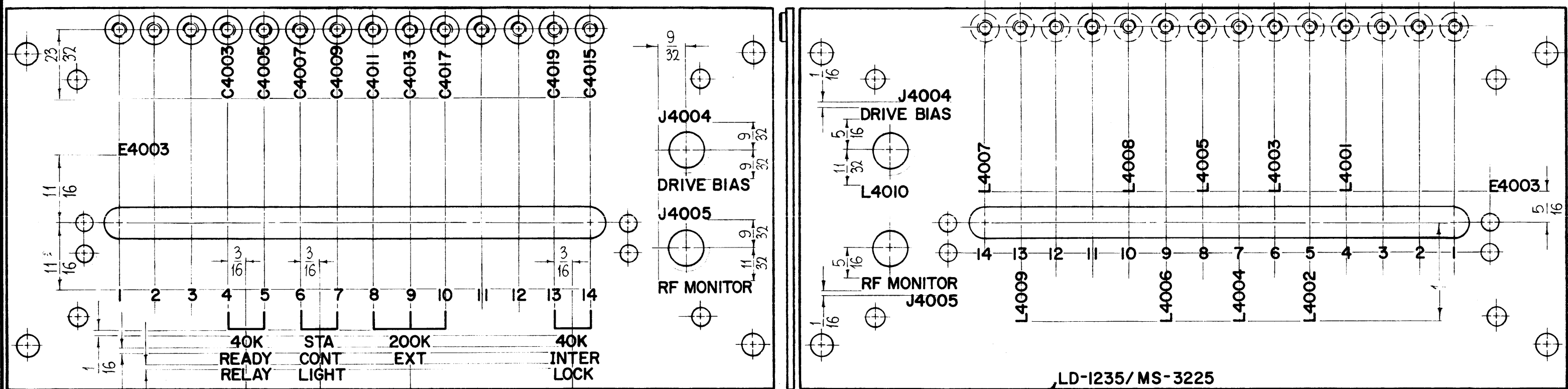
UNLESS OTHERWISE SPECIFIED DIMENSIONS ARE IN INCHES AND INCLUDE CHEMICALLY APPLIED OR PLATED FINISHES		DRAWN John C. Biele	DATE	FINAL APPROVAL	DATE
DECIMALS .X ± .05 .XX ± .01 .XXX ± .005		CHECKED [Signature]	DATE	[Signature]	
FRACTIONS ± 1/64 ANGLES ± 0° 30'		MECH. DES. [Signature]	DATE 3/12/64	LD-1230	0
TOLERANCES		SHEET		REV. LTR.	

MARKING PROCESS AS PER TMC SPECIFICATION S-727  
LETTERING: 1/8 HIGH BLACK GOTHIC, LOCATED AS SHOWN!

NOTES

1	GPT-200K	AP-111
Q'TY./UNIT	MODEL USED ON	ASS'Y. NO.
SCALE	CODE	
THE CONTENTS OF THIS DRAWING ARE THE EXCLUSIVE PROPERTY OF THE TECHNICAL MATERIEL CORP. ITS UNAUTHORIZED USE OR REPRODUCTION IN WHOLE OR IN PART IS STRICTLY FORBIDDEN.		

LD-1235 0



LD-1235/MS-3225

MARK TMC PART NO. WITH LATEST REVISION LETTER

0	ORIGINAL RELEASE FOR PRODUCT.	5-28-64	0	A.M.		
X3	40K INTERLOCK WAS 10K INTERLOCK	5-19-64		SRG		
SYM	DESCRIPTION	DATE	CH. NO.	DRAFTS	CHECKER	ENG. APP.
UNLESS OTHERWISE SPECIFIED:						
DIMENSIONS ARE IN INCHES		SCALE: 1" = 1"				
TOLERANCES ON FRACTIONS ± 1/64		MAXIMUM ALLOWABLE TOLERANCES HAVE BEEN DETERMINED AND ANY DEVIATIONS WILL BE CAUSE FOR REJECTION.				
DECIMALS ± .05		REMOVE ALL BURRS AND SHARP EDGES				
ANGLES ± 1/2°						

**MARKING PROCESS: AS PER TMC SPECIFICATION 5-727.**

**LETTERING: 1/8 HIGH WHITE GOTHIC, LOCATED AS SHOWN.**

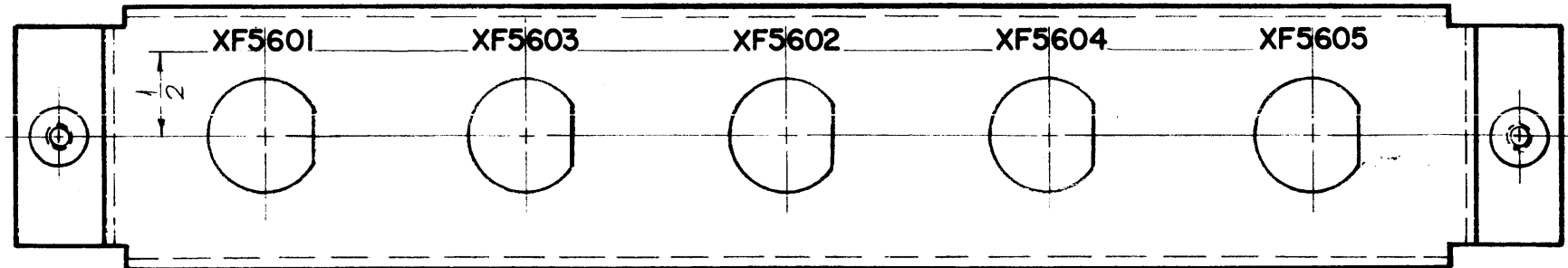
1	GPT. 200K	AX-392	6-30-63
REQ. PER UNIT	MODEL	SECTION	ASS'Y. NO.
			DATE
USED ON			

REQ. ITEM	PART NO.	F. BUDETTI	DESCRIPTION	SYMBOL
STOCK SIZE		THE TECHNICAL MATERIEL CORP. MAMARONECK, NEW YORK		
MATERIAL		LETTERING, PLATE, TERMINAL MTG.		
TYPE & TEMPER		John C. Biele	AC	RDC
HEAT TREAT. SPEC.		DRAWN	CHECKER	FINAL APPROVAL
FINISH & SPEC. NO.		023	aa	LD-1235 0
		ELEC. DES. APP.	MECH. DES. APP.	

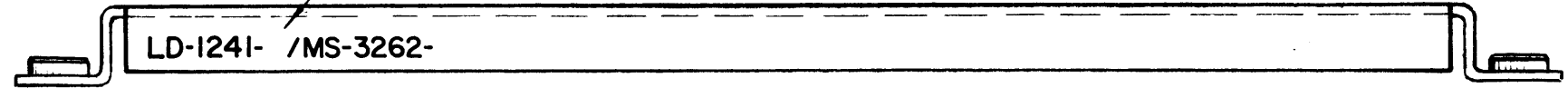
LD-1241 0

REVISIONS

SYM	DESCRIPTION	DATE	E.M.N. NO.	DRAFT	CHKD	APPD
A	REVISED + REDRAWN					
0	ORIGINAL RELEASE FOR PRODUCTION	4-27-64		SRG		



STAMP TMC PART NO.  
W/LATEST REV. LETTERS



REF. MS-3262-

MARKING PROCESS: AS PER TMC SPECIFICATION S-727.

LETTERING: 1/8 HIGH BLACK GOTHIC, LOCATED AS SHOWN.

NOTES

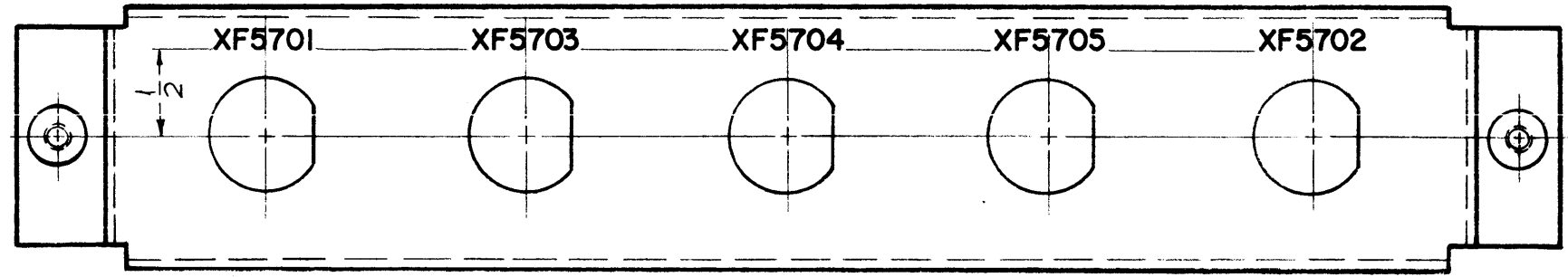
1	GPT-200K	AR-137
Q'TY./UNIT	MODEL USED ON	ASS'Y. NO.
SCALE 1"=1"	CODE A	
THE CONTENTS OF THIS DRAWING ARE THE EXCLUSIVE PROPERTY OF THE TECHNICAL MATERIEL CORP. ITS UNAUTHORIZED USE OR REPRODUCTION IN WHOLE OR IN PART IS STRICTLY FORBIDDEN.		

REQ'D.	ITEM	PART NUMBER	DESCRIPTION	SYMBOL
F. BUDETTI LIST OF MATERIAL				
MATERIAL			THE TECHNICAL MATERIEL CORP. MAMARONECK, NEW YORK	
FINISH			TITLE MARKING, FUSE MOUNTING BRACKET MARKING METHOD: AS PER TMC SPEC S-727	
UNLESS OTHERWISE SPECIFIED DIMENSIONS ARE IN INCHES AND INCLUDE CHEMICALLY APPLIED OR PLATED FINISHES			DRAWN John C. Biele CHECKED aa DATE 5/12/64 FINAL APPROVAL [Signature] DATE	
DECIMALS .X ± .05 .XX ± .01 .XXX ± .005	TOLERANCES	FRACTIONS ± 1/64 ANGLES ± 0° 30'	ELECT. DES. [Signature] MECH. DES. [Signature] DATE 2/12/64 SHEET	LD-1241 0
				REV. LTR.

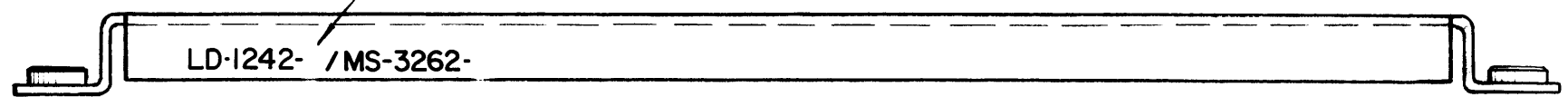
LD-1242 0

**REVISIONS**

SYM	DESCRIPTION	DATE	E.M.N. NO.	DRAFT	CHKD	APPD
A	REDRAWN & REVISED					
0	ORIGINAL RELEASE FOR PRODUCTION	4-27-64		SRG		



STAMP TMC PART NO.  
W/LATEST REV. LETTERS



REF. MS-3262-

REQ'D.	ITEM	PART NUMBER	DESCRIPTION	SYMBOL
	F. BUDETTI		LIST OF MATERIAL	
MATERIAL		THE TECHNICAL MATERIEL CORP. MAMARONECK, NEW YORK		
FINISH		TITLE MARKING, FUSE MTG. BRACKET MARKING METHOD: AS PER TMC SPEC. S-727		
UNLESS OTHERWISE SPECIFIED DIMENSIONS ARE IN INCHES AND INCLUDE CHEMICALLY APPLIED OR PLATED FINISHES		DRAWN John C. Biele	DATE 8/2/62	FINAL APPROVAL [Signature]
DECIMALS .X ± .05 .XX ± .01 .XXX ± .005		CHECKED aa	DATE 2/14/64	DATE 2-14-64
FRACTIONS ± 1/64 ANGLES ± 0° 30'		ELECT. DES. [Signature]	DATE 2-14-64	DATE 2-14-64
TOLERANCES		MECH. DES. [Signature]	DATE 2-14-64	DATE 2-14-64
SHEET				REV. LTR.

MARKING PROCESS: AS PER TMC SPECIFICATION S-727.  
LETTERING: 1/8 HIGH BLACK GOTHIC, LOCATED AS SHOWN.

1	GDT-200K	AR-138
Q'TY./UNIT	MODEL USED ON	ASS'Y. NO.
SCALE 1"=1"	CODE A	

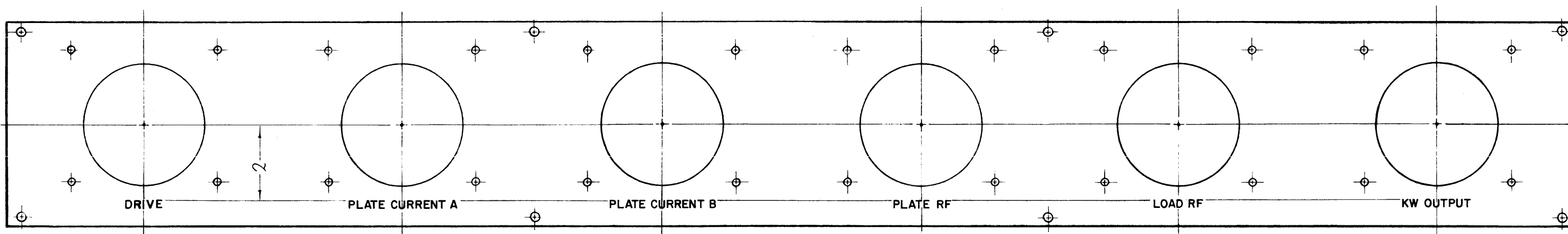
THE CONTENTS OF THIS DRAWING ARE THE EXCLUSIVE PROPERTY OF THE TECHNICAL MATERIEL CORP. ITS UNAUTHORIZED USE OR REPRODUCTION IN WHOLE OR IN PART IS STRICTLY FORBIDDEN.

**NOTES**

LD-1242 0

LD-1250 0

THE CONTENTS OF THIS DRAWING ARE THE EXCLUSIVE PROPERTY OF THE TECHNICAL MATERIEL CORP. ITS UNAUTHORIZED USE OR REPRODUCTION IN WHOLE OR IN PART IS TRICTLY FORBIDDEN.



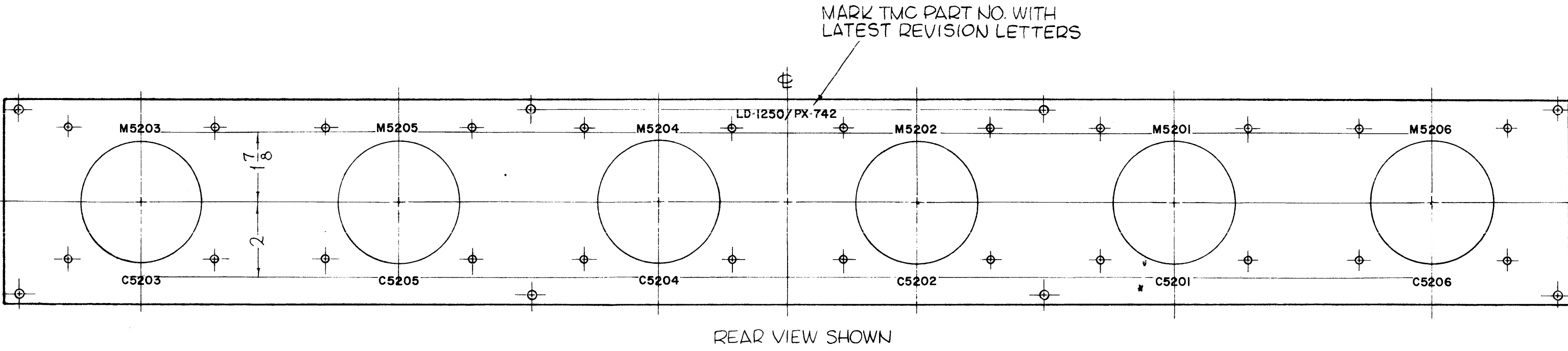
FRONT VIEW SHOWN

REF: PX-742

<p>ORIGINAL RELEASE FOR PROD 5/12/64</p> <p>SYMBOL DESCRIPTION DATE CH. NO. DRAFTS CHECKER ENG. APP.</p> <p>UNLESS OTHERWISE SPECIFIED: DIMENSIONS ARE IN INCHES TOLERANCES ON FRACTIONS ± 1/64 DECIMALS ± .005 ANGLES ± 1/2°</p> <p>CODE A</p>		<p>MARKING PROCESS: AS PER TMC SPECIFICATION S-727.</p> <p>LETTERING: 3/16 HIGH WHITE GOTHIC, LOCATED AS SHOWN.</p>				REQ. ITEM		PART NO.		F. BUDETTI DESCRIPTION		SYMBOL
						STOCK SIZE		MATERIAL		THE TECHNICAL MATERIEL CORP. MAMARONECK, NEW YORK		MARKING, FRONT, PANEL METER MTG.
<p>SCALE: 3/8" = 1"</p> <p>MAXIMUM ALLOWABLE TOLERANCES HAVE BEEN DETERMINED AND ANY DEVIATIONS WILL BE CAUSE FOR REJECTION. REMOVE ALL BURRS AND SHARP EDGES</p>		T	GPT-200K	AM-118	8-14-63	TYPE & TEMPER		HEAT TREAT. SPEC.		John C. Biele	RAC	
		REQ. PER UNIT	MODEL	SECTION	ASS'Y. NO.	DATE	FINISH & SPEC. NO.		DRAWN	CHECKED	FINAL APPROVAL	
		USED ON								ELEC. DES. APP.	MECH. DES. APP.	LD-1250 0

LD-1250 0

THE CONTENTS OF THIS DRAWING ARE THE EXCLUSIVE PROPERTY OF THE TECHNICAL MATERIEL CORP. ITS UNAUTHORIZED USE OR REPRODUCTION IN WHOLE OR IN PART IS STRICTLY FORBIDDEN.



O ORIGINAL RELEASE FOR PROD		5/12/64				
SYM	DESCRIPTION	DATE	CH. NO.	DRAFTS	CHECKER	ENG. APP.
UNLESS OTHERWISE SPECIFIED:		SCALE: 3/8" = 1"				
DIMENSIONS ARE IN INCHES		MAXIMUM ALLOWABLE TOLERANCES HAVE BEEN DETERMINED AND ANY DEVIATIONS WILL BE CAUSE FOR REJECTION.				
TOLERANCES ON FRACTIONS ± 1/64		REMOVE ALL BURRS AND SHARP EDGES				
DECIMALS ± .005						
ANGLES ± 1/2°						
CODE A						

MARKING PROCESS: AS PER TMC SPECIFICATION S-727.

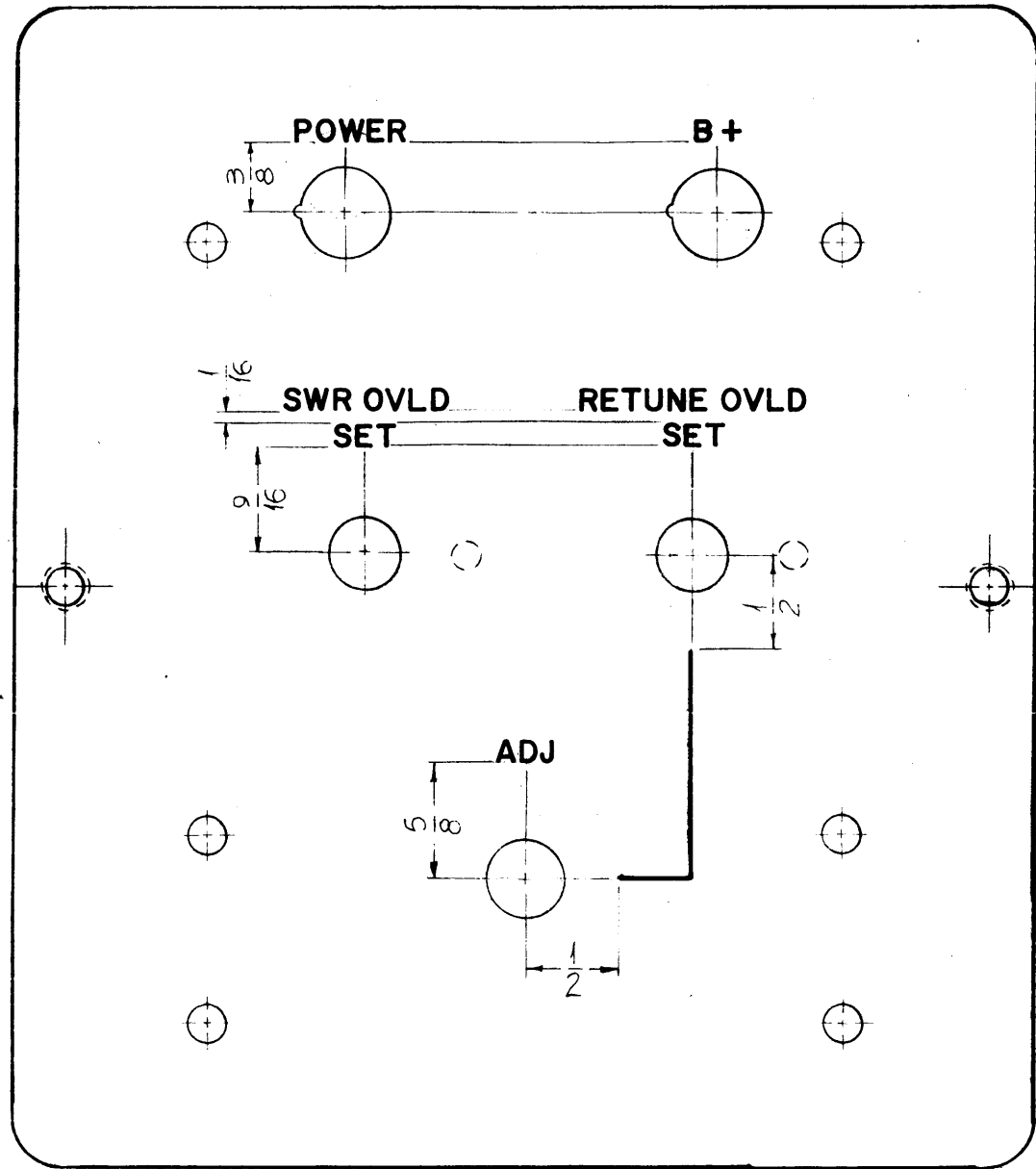
LETTERING: 1/8 HIGH WHITE GOTHIC, LOCATED AS SHOWN.

1	GPT-200K		AM-11B	B-14-63
REQ. PER UNIT	MODEL	SECTION	ASS'Y. NO.	DATE
USED ON				

REF: PX 742

REQ. ITEM	PART NO.	F. BUDETTI	DESCRIPTION	SYMBOL
STOCK SIZE		THE TECHNICAL MATERIEL CORP. MAMARONECK, NEW YORK		
MATERIAL		MARKING, REAR, PANEL METER MTG. FINAL AMPL		
TYPE & TEMPER	HEAT TREAT. SPEC.	John C. Biola	AA	Final Approval
FINISH & SPEC. NO.		029	3/23/64	LD-1250 10
		ELEC. DES. APP.	MECH. DES. APP.	

LD-1251



REVISIONS						
SYM	DESCRIPTION	DATE	E.M.N. NO.	DRAFT	CHKD	APPD
0	ORIGINAL RELEASE FOR PRODUCTION	2-28-64		A.M.		

**UNLESS OTHERWISE SPECIFIED:**

1-ENGRAVING: 1/8 HIGH GOTHIC, WHITE FILLED

2-ALL LINES LOCATE AS SHOWN.

LETTERED HEIGHT	DEPTH OF STROKE	WIDTH OF STROKE
1/8	.010	.020
SOLID LINES	.010	.015

REF- TMC DWG. MS-3266

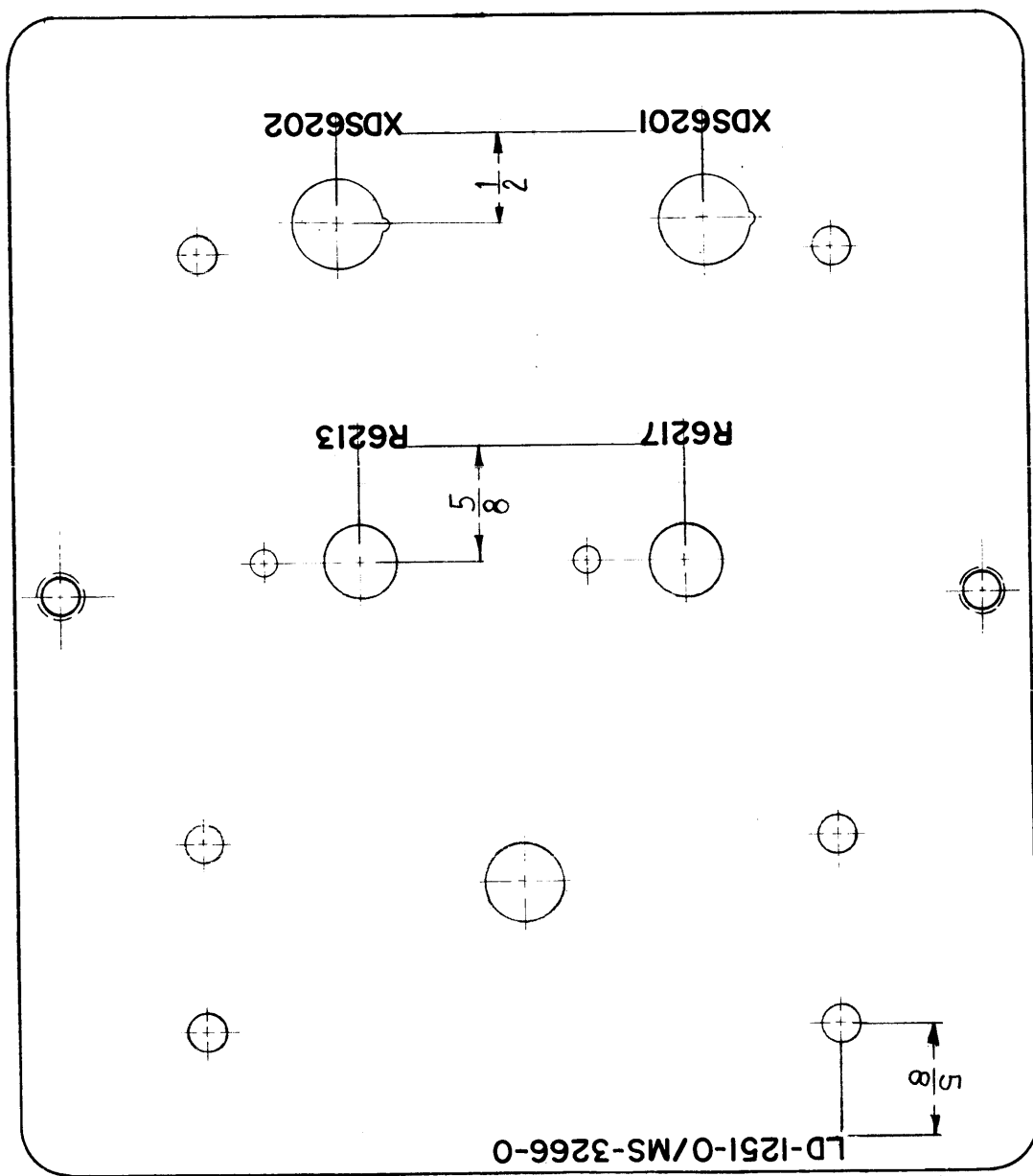
REQ'D.	ITEM	PART NUMBER	DESCRIPTION	SYMBOL
F BUDETTI LIST OF MATERIAL				
MATERIAL			<b>THE TECHNICAL MATERIEL CORP.</b> MAMARONECK, NEW YORK	
FINISH			TITLE MARKING, FRONT PANEL (SWR RETUNE) MARKING PROCESS - ENGRAVING	
UNLESS OTHERWISE SPECIFIED DIMENSIONS ARE IN INCHES AND INCLUDE CHEMICALLY APPLIED OR PLATED FINISHES			DRAWN J.F. VITRO	DATE 2/11/64
DECIMALS .X ± .05 .XX ± .01 .XXX ± .005			CHECKED J.C.B.	DATE 2/11/64
FRACTIONS ± 1/64 ANGLES ± 0° 30'			MECH. DES. S.D.	DATE 2-11-64
			FINAL APPROVAL <i>RAC</i>	
			LD-1251	
			SHEET 1 OF 2	
			REV. LTR.	

1	GPT-200-K	AZ-101
Q'TY./UNIT	MODEL USED ON	ASS'Y. NO.
SCALE 1:1	CODE A	
THE CONTENTS OF THIS DRAWING ARE THE EXCLUSIVE PROPERTY OF THE TECHNICAL MATERIEL CORP. ITS UNAUTHORIZED USE OR REPRODUCTION IN WHOLE OR IN PART IS STRICTLY FORBIDDEN.		

NOTES



LD-1251  
0



(REAR VIEW SHOWN)

1	GPT-200K	AZ-101
Q'TY./UNIT	MODEL USED ON	ASS'Y. NO.
SCALE 1:1	CODE A	

THE CONTENTS OF THIS DRAWING ARE THE EXCLUSIVE PROPERTY OF THE TECHNICAL MATERIEL CORP. ITS UNAUTHORIZED USE OR REPRODUCTION IN WHOLE OR IN PART IS STRICTLY FORBIDDEN.

NOTES

REVISIONS

SYM	DESCRIPTION	DATE	E.M.N. NO.	DRAFT	CHKD	APPD
0	ORIGINAL RELEASE FOR PRODUCTION	2/28/64		A.M.		

UNLESS OTHERWISE SPECIFIED:  
 MARKING PROCESS: AS PER TMC SPECIFICATION S-727.  
 LETTERING: 1/8 HIGH BLACK GOTHIC, LOCATED AS SHOWN.

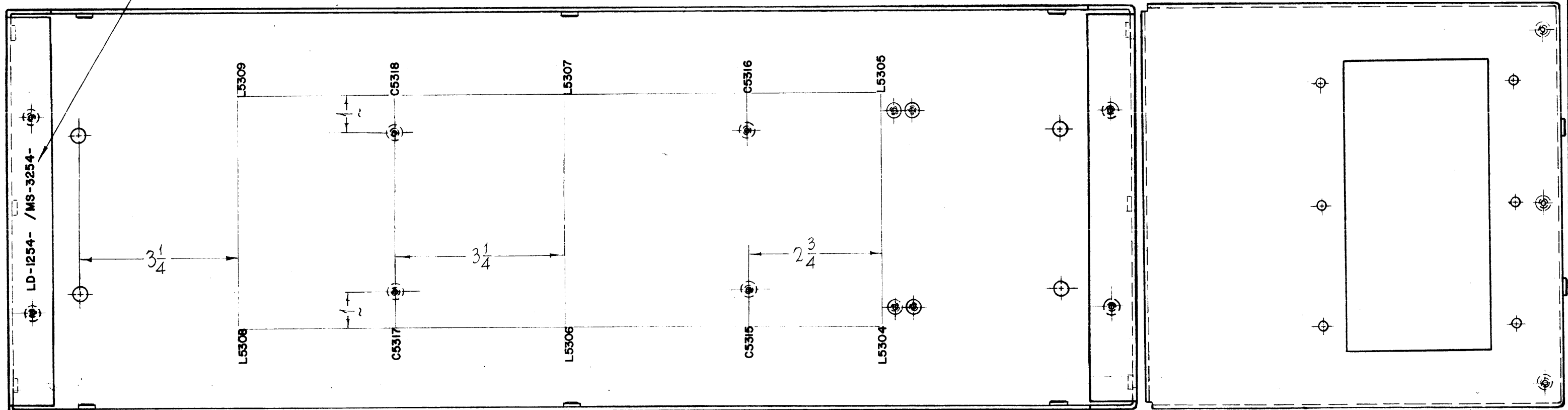
REQ'D.	ITEM	PART NUMBER	DESCRIPTION	SYMBOL
F. BUDETTI LIST OF MATERIAL				
MATERIAL			THE TECHNICAL MATERIEL CORP. MAMARONECK, NEW YORK	
FINISH			TITLE MARKING, FRONT PANEL-REAR (SWR RETUNE) MARKING PROCESS: PER S-727	
UNLESS OTHERWISE SPECIFIED DIMENSIONS ARE IN INCHES AND INCLUDE CHEMICALLY APPLIED OR PLATED FINISHES			DRAWN J.F.V.	DATE 2/11/64
DECIMALS .X ± .05 .XX ± .01 .XXX ± .005			CHECKED S.D.	DATE 2/11/64
FRACTIONS ± 1/64 ANGLES ± 0° 30'			MECH. DES. S.D.	DATE 2-11-64
			FINAL APPROVAL RDC	DATE
			LD-1251	0
			HEET 2 OF 2	REV. LTR.

LD-1254 0

REVISIONS

SYM	DESCRIPTION	DATE	E.M.N. NO.	DRAFT	CHKD	APPD
	C5113, C5114 DELETED, L5308, L5309, C5315, C5316, C5317, C5318, C5319 RELOCATED	10-24-63				
	L5306, L5307, L5308, L5309 RELOCATED	10-24-63				
	1" DIM WAS 3/4	11-64				
0	ORIGINAL RELEASE FOR PRODUCTION	5-6-64		SRG		

MARK TMC PART NO.  
W/LATEST REV. LETTERS



REF - TMC DWG MS-3254-

REQ'D.	ITEM	PART NUMBER	DESCRIPTION	SYMBOL
F. BUETTI LIST OF MATERIAL				
MATERIAL			THE TECHNICAL MATERIEL CORP. MAMARONECK, NEW YORK	
FINISH			TITLE LETTERING, CHASSIS, DECOUPLER	
UNLESS OTHERWISE SPECIFIED DIMENSIONS ARE IN INCHES AND INCLUDE CHEMICALLY APPLIED OR PLATED FINISHES				
DECIMALS	TOLERANCES		FRACTIONS	ANGLES
.X ± .05			± 1/64	± 0° 30'
.XX ± .01				
.XXX ± .005				
DRAWN John C. Biele		DATE 5/7/63	FINAL APPROVAL KJC	
CHECKED JCB		DATE 2/6/64	SHEET LD-1254	
ELECT. DES. JCB		DATE 3/6/64	REV. LTR. 0	
MECH. DES. JCB		DATE		

UNLESS OTHERWISE SPECIFIED MARKING PROCESS AS PER TMC SPECIFICATION S727 LETTERING - 1/8 HIGH GOTHIC, BLACK.

NOTES

1 GPT-200K (AX-395) A-3258  
QTY./UNIT MODEL USED ON AS 'Y. NO.

SCALE 1/2" = 1" CODE A

THE CONTENTS OF THIS DRAWING ARE THE EXCLUSIVE PROPERTY OF THE TECHNICAL MATERIEL CORP. ITS UNAUTHORIZED USE OR REPRODUCTION IN WHOLE OR IN PART IS STRICTLY FORBIDDEN.

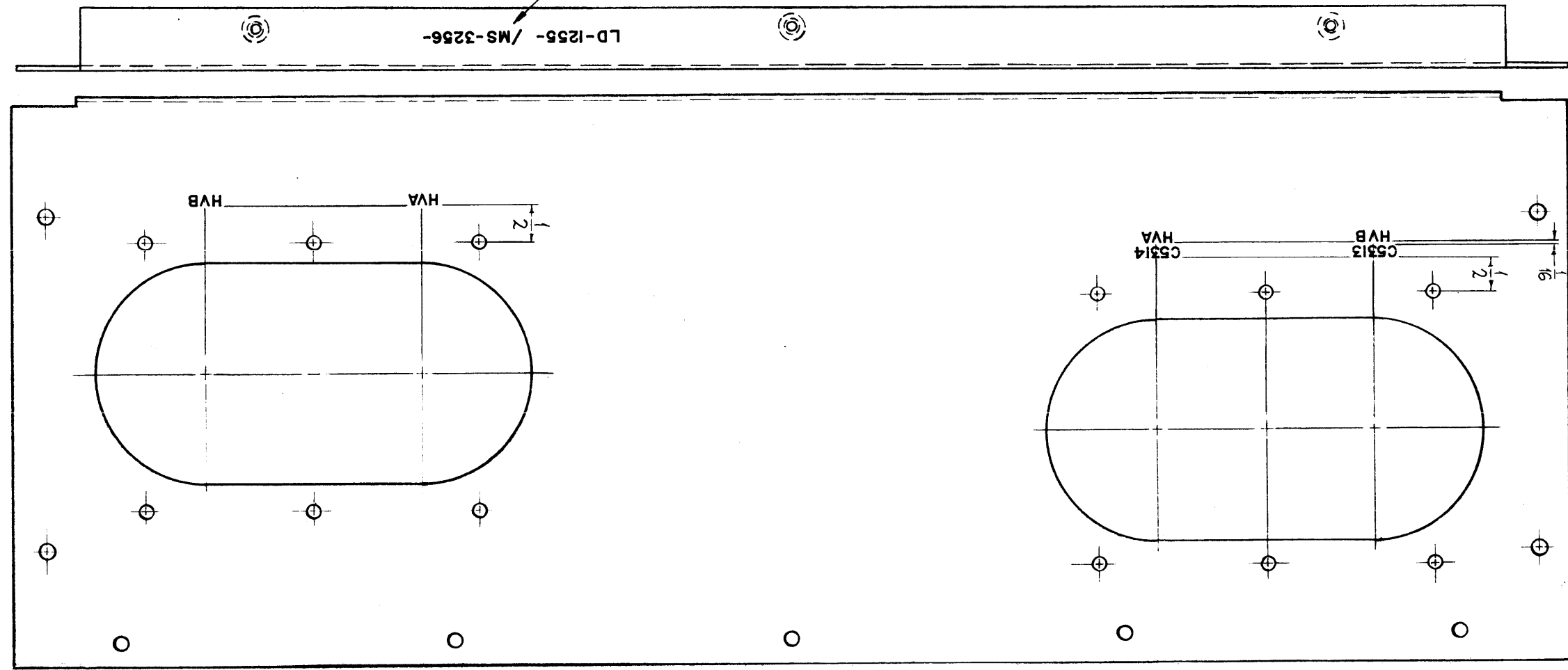
LD-1255 0

REVISIONS

SYM	DESCRIPTION	DATE	E.M.N. NO.	DRAFT	CHKD	APPD
	HVA, HVB, HVD-C5304, HVD-C5303 RELOCATED	10-24-63				
0	ORIGINAL RELEASE FOR PRODUCTION	5-6-64		SRG		

MARK TMC PART NO.  
W/LATEST REV. LETTERS

LD-1255-MS-3256



REF - TMC DWG. MS-3256

REQ'D.	ITEM	PART NUMBER	DESCRIPTION	SYMBOL
<b>F. BUDETTI LIST OF MATERIAL</b>				
MATERIAL			<b>THE TECHNICAL MATERIEL CORP. MAMARONECK, NEW YORK</b>	
FINISH			TITLE <b>LETTERING, PLATE, SIDE RIGHT</b>	
UNLESS OTHERWISE SPECIFIED DIMENSIONS ARE IN INCHES AND INCLUDE CHEMICALLY APPLIED OR PLATED FINISHES			DRAWN John C. Biele	DATE 5/7/63
DECIMALS .X ± .05 .XX ± .01 .XXX ± .005			CHECKED JB	DATE 5/6/64
FRACTIONS ± 1/64 ANGLES ± 0° 30'			ELECT. DES. JB	DATE 5/6/64
TOLERANCES			MECH. DES. MC	DATE 5/6/64
THE CONTENTS OF THIS DRAWING ARE THE EXCLUSIVE PROPERTY OF THE TECHNICAL MATERIEL CORP. ITS UNAUTHORIZED USE OR REPRODUCTION IN WHOLE OR IN PART IS STRICTLY FORBIDDEN.			FINAL APPROVAL KX	DATE
UNLESS OTHERWISE SPECIFIED MARKING PROCESS - AS PER TMC SPECIFICATION S727. LETTERING - 1/8 HIGH GOTHIC, BLACK.			LD-1255	0
NOTES			SHEET	REV. LTR.

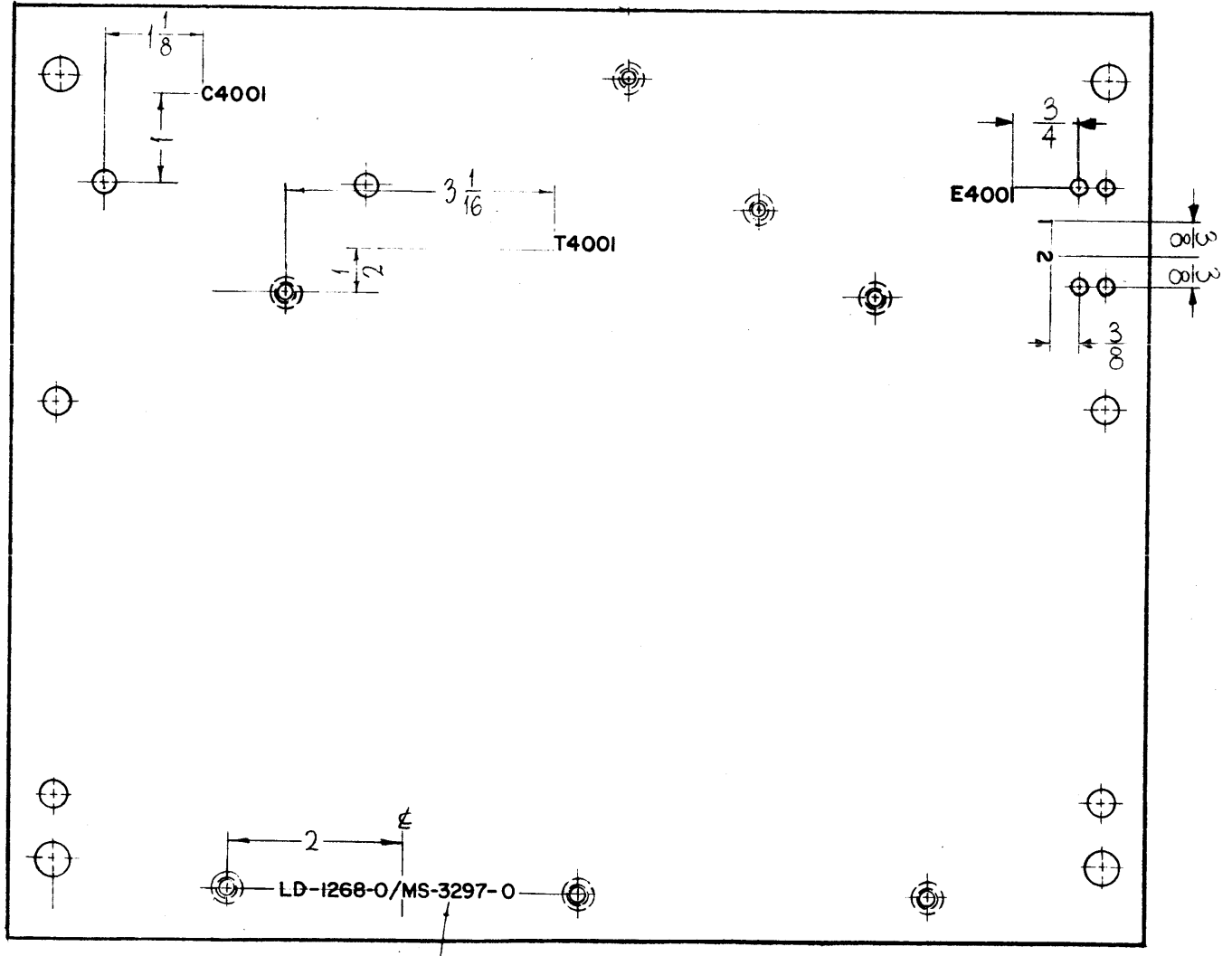
UNLESS OTHERWISE SPECIFIED  
MARKING PROCESS - AS PER TMC SPECIFICATION S727.  
LETTERING - 1/8 HIGH GOTHIC, BLACK.

NOTES

LD-1268  
0

**REVISIONS**

SYM	DESCRIPTION	DATE	E.M.N. NO.	DRAFT	CHKD	APPD
X3	RELOCATED LD-1268/MS-3297 DUE TO PLATE BEING CUT DOWN 1/4" ON TOP, 5/8 ON BOTTOM	12/10/63				
X4	PLATE CUT DOWN ON TOP 2 HOLES RELOCATED	2-5-64				
0	ORIGINAL RELEASE FOR PRODUCTION	3-10-64				



REQ'D.	ITEM	PART NUMBER	DESCRIPTION	SYMBOL
--------	------	-------------	-------------	--------

F. BUDETTI

**LIST OF MATERIAL**

MATERIAL	THE TECHNICAL MATERIEL CORP. MAMARONECK, NEW YORK		
FINISH	TITLE LETTERING, TRANSFORMED MTG. PLATE		

MARKING PROCESS: AS PER TMC SPECIFICATION S-727.

LETTERING: 1/8 HIGH BLACK GOTHIC, LOCATED AS SHOWN.

1	GPT-200K (AX-392)	A-3159
Q'TY./UNIT	MODEL USED ON	ASS'Y. NO.
SCALE #	CODE A	

UNLESS OTHERWISE SPECIFIED  
DIMENSIONS ARE IN INCHES AND INCLUDE  
CHEMICALLY APPLIED OR PLATED FINISHES

DRAWN John C. Biele	DATE 5-18-63	FINAL APPROVAL RJC	DATE 4-9-64
CHECKED aa jcb	DATE 3/16/64		

**NOTES**

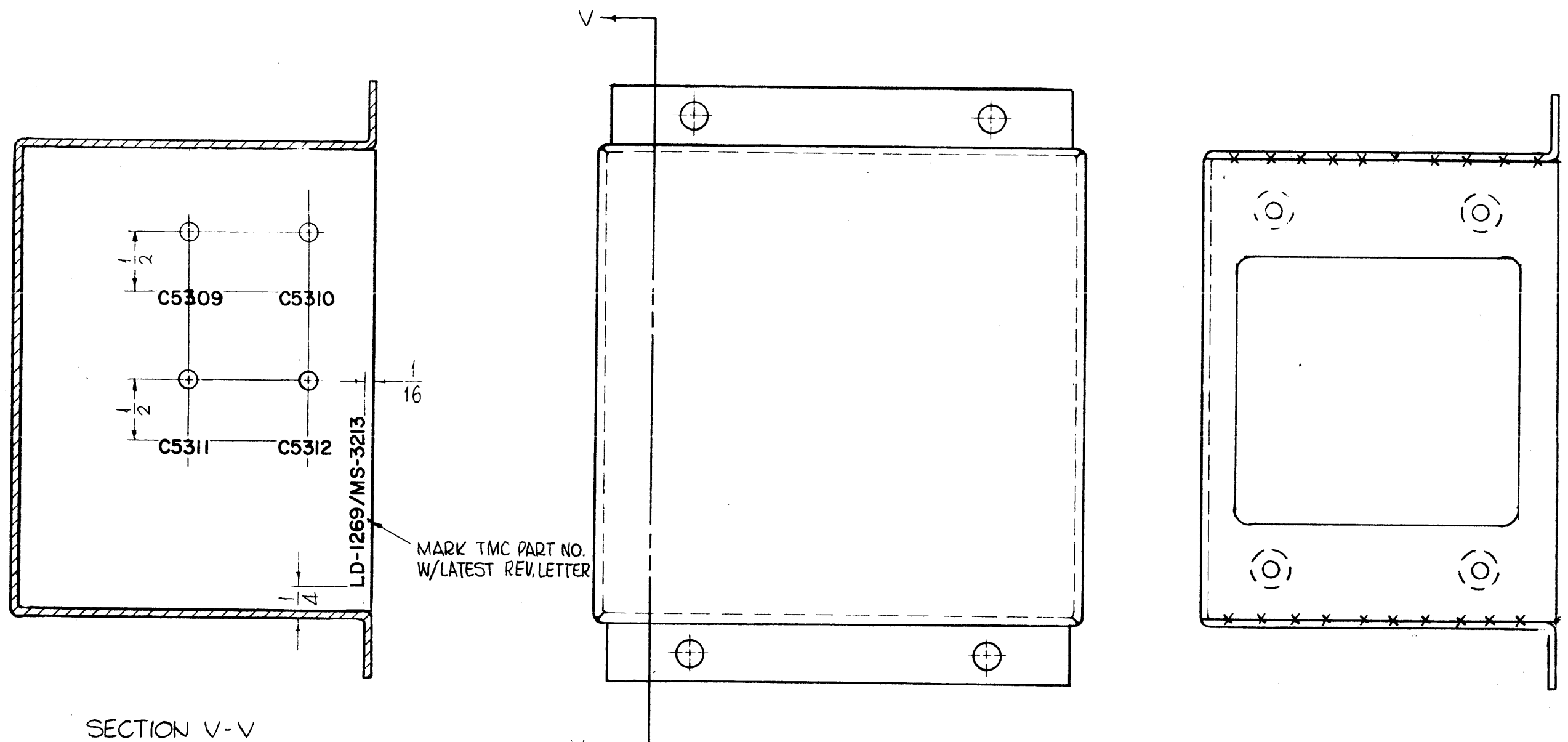
THE CONTENTS OF THIS DRAWING ARE THE EXCLUSIVE PROPERTY  
OF THE TECHNICAL MATERIEL CORP. ITS UNAUTHORIZED USE OR  
REPRODUCTION IN WHOLE OR IN PART IS STRICTLY FORBIDDEN.

DECIMALS .X ± .05 .XX ± .01 .XXX ± .005	TOLERANCES	FRACTIONS ± 1/64 ANGLES ± 0° 30'
--	------------	---

ELE. NO. 10	DATE 12/10/63	LD-1268	0
MECH. DES. Cue 2/1/64	DATE	SHEET	REV. LTR.

LD-1269-0

THE CONTENTS OF THIS DRAWING ARE THE EXCLUSIVE PROPERTY OF THE TECHNICAL MATERIEL CORP. ITS UNAUTHORIZED USE OR REPRODUCTION IN WHOLE OR IN PART IS STRICTLY FORBIDDEN.



SECTION V-V

MARKING PROCESS: AS PER TMC SPECIFICATION S-727.  
 LETTERING: 1/8 HIGH BLACK GOTHIC, LOCATED AS SHOWN.

REF. TMC DWG. MS-3213

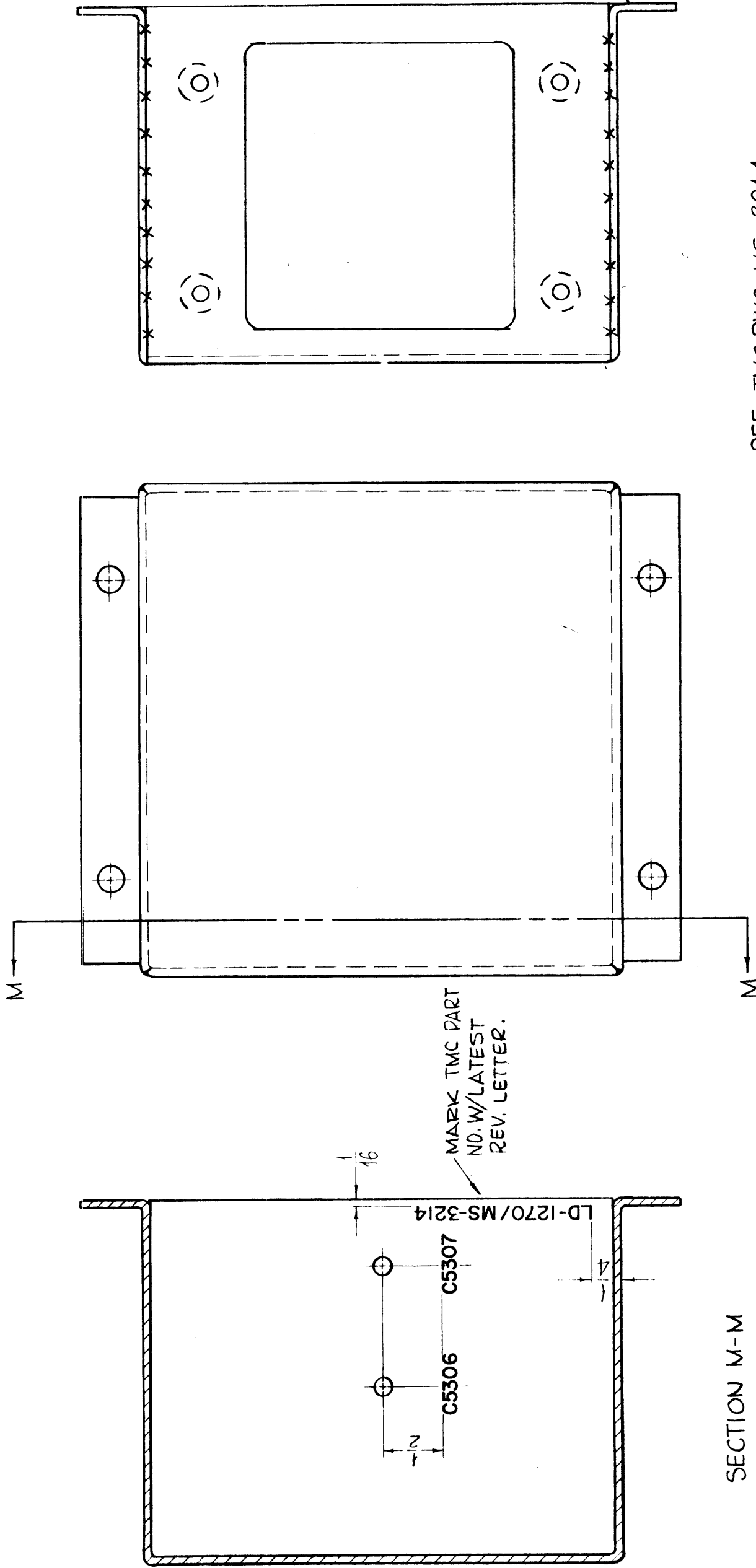
0	ORIG. RELEASE FOR PRODUCTION	5-18-64	SRG			
SYM	DESCRIPTION	DATE	CH. NO.	DRAFTS	CHECKER	ENG. APP.
UNLESS OTHERWISE SPECIFIED:		SCALE: 1" = 1"				
DIMENSIONS ARE IN INCHES		MAXIMUM ALLOWABLE TOLERANCES HAVE BEEN DETERMINED AND ANY DEVIATIONS WILL BE CAUSE FOR REJECTION.				
TOLERANCES ON FRACTIONS ± 1/64		DECIMALS ± .005				
ANGLES ± 1/2°		REMOVE ALL BURRS AND SHARP EDGES				

1	GPT 200K	AX-395	A-281B	7-0-63
REQ. PER UNIT	MODEL	SECTION	ASS'Y. NO.	DATE
USED ON				

REQ. ITEM	PART NO.	F. BUDETTI	DESCRIPTION	SYMBOL
STOCK SIZE		THE TECHNICAL MATERIEL CORP. MAMARONECK, NEW YORK		
MATERIAL		LETTERING, CHASSIS, METERING CIRCUIT MTG.		
TYPE & TEMPER		John C. Biela	AA	RAC
HEAT TREAT. SPEC.		DRAWN	CHECKED	FINAL APPROVAL
FINISH & SPEC. NO.		OCB	3/4/64	LD-1269 10
		ELEC. DES. APP.	MECH. DES. APP.	

THE CONTENTS OF THIS DRAWING ARE THE EXCLUSIVE PROPERTY OF THE TECHNICAL MATERIEL CORP. ITS UNAUTHORIZED USE OR REPRODUCTION IN WHOLE OR IN PART IS STRICTLY FORBIDDEN.

LD-1270 0



SECTION M-M

MARKING PROCESS: AS PER TMC SPECIFICATION S-727.  
 LETTERING: 1/8 HIGH BLACK GOTHIC, LOCATED AS SHOWN.

REF. TMC DWG. MS-3214

REG. ITEM	PART NO.	F. BUDETTI	DESCRIPTION	SYMBOL
			THE TECHNICAL MATERIEL CORP. MAMARONECK, NEW YORK	
	STOCK SIZE		LETTERING, CHASSIS, METERING	
	MATERIAL		CIRCUIT MTG.	
	TYPE & TEMPER	John C. Biele	DRAWN	FINAL APPROVAL
	HEAT TREAT. SPEC.		AA	LD-1270
	FINISH & SPEC. NO.		00	0
			ELEC. DES. APP. MECH. DES. APP.	

SYM	DESCRIPTION	DATE	CH. NO.	DRAFTS	CHECKER	ENG. APP.
0	ORIGINAL RELEASE FOR PROD.	5-18-64		SRG		
UNLESS OTHERWISE SPECIFIED:						
DIMENSIONS ARE IN INCHES						
TOLERANCES ON FRACTIONS ± 1/64 DECIMALS ± .05 ANGLES ± 1/2°						
MAXIMUM ALLOWABLE TOLERANCES HAVE BEEN DETERMINED AND ANY DEVIATIONS WILL BE CAUSE FOR REJECTION. REMOVE ALL BURRS AND SHARP EDGES						

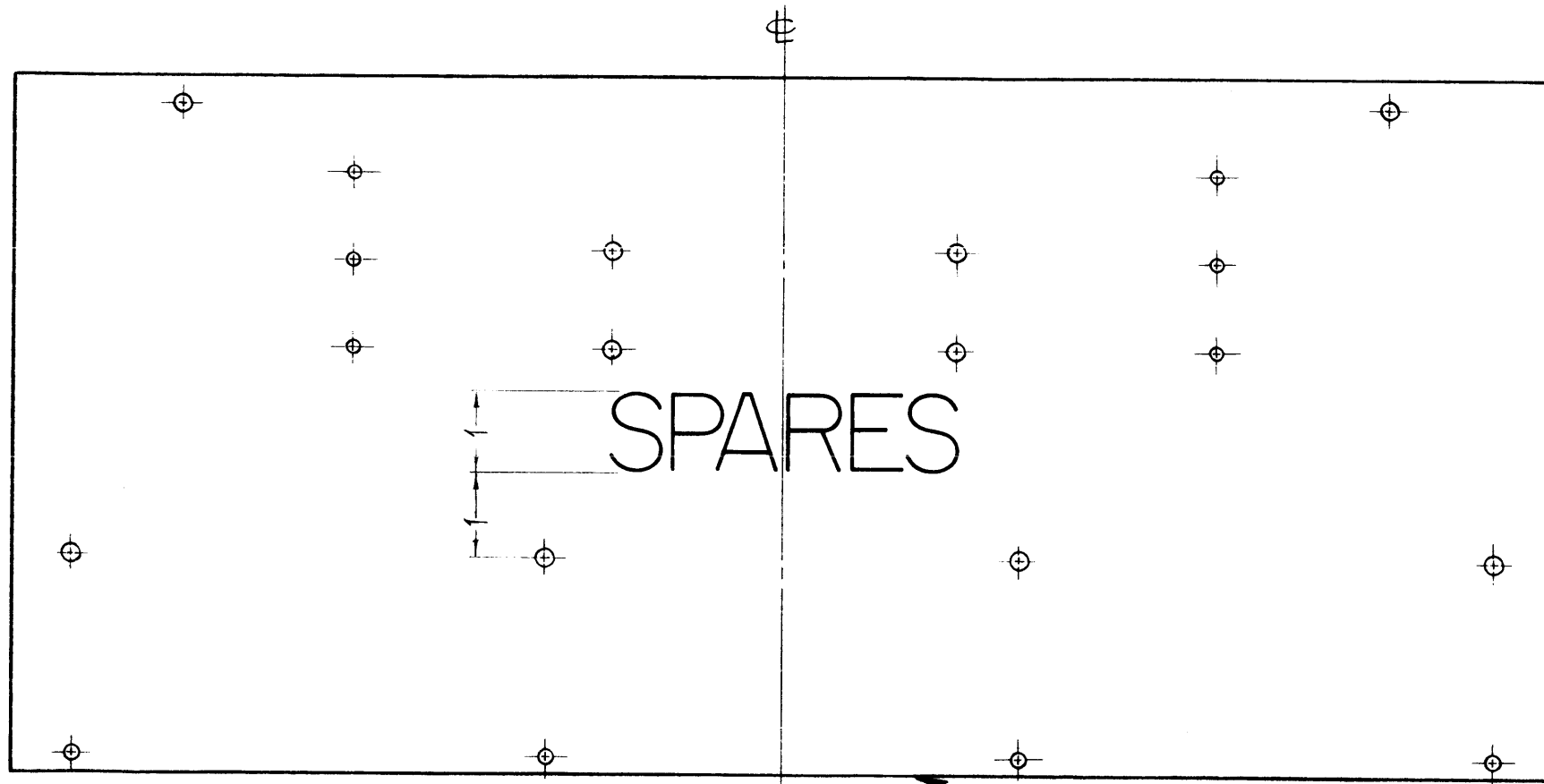
1	GPT-200K	AX-395	A-2017	7-8-63
REQ. PER UNIT	MODEL	SECTION	ASSY. NO.	DATE

USED ON

LD-1282-0

REVISIONS

SYM	DESCRIPTION	DATE	E.M.N. NO.	DRAFT	CHKD	APPD
0	ORIGINAL RELEASE FOR PRODUCTION	3-2-64		A.M.		



FRONT VIEW

MARK TMC PART NO. 1/8 HIGH ON REAR. LD-1282-0/MS-3331-0

MARKING PROCESS: AS PER TMC SPECIFICATION S-727.

LETTERING: WHITE GOTHIC, LOCATED AS SHOWN.

REQ'D.	ITEM	PART NUMBER	DESCRIPTION	SYMBOL
	F. BUDETTI		LIST OF MATERIAL	
MATERIAL		THE TECHNICAL MATERIEL CORP. MAMARONECK, NEW YORK		
FINISH		TITLE MARKING, DOOR, BOX, SPARE PARTS STOWAGE		
UNLESS OTHERWISE SPECIFIED DIMENSIONS ARE IN INCHES AND INCLUDE CHEMICALLY APPLIED OR PLATED FINISHES		DRAWN John C. Biele	DATE 8-28-63	FINAL APPROVAL <i>Rie</i>
		CHECKED	DATE	DATE 3-17-64
DECIMALS .X ± .05 .XX ± .01 .XXX ± .005		FRACTIONS ± 1/64 ANGLES ± 0° 30'		ELECT. DES. <i>B-P</i>
TOLERANCES		DATE 2/25/64		DATE 2/19/64
		MECH. DES. <i>llc</i>		DATE
		SHEET		REV. LTR.

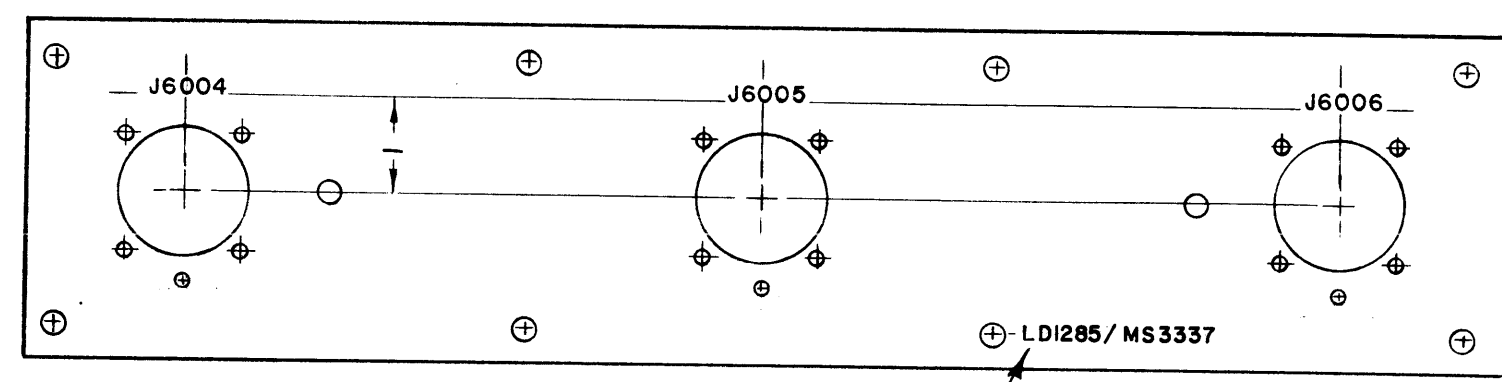
1	GPT-200K	AX-393
QTY./UNIT	MODEL USED ON	ASS'Y. NO.
SCALE 1/2" = 1"	CODE A	

THE CONTENTS OF THIS DRAWING ARE THE EXCLUSIVE PROPERTY OF THE TECHNICAL MATERIEL CORP. ITS UNAUTHORIZED USE OR REPRODUCTION IN WHOLE OR IN PART IS STRICTLY FORBIDDEN.

NOTES

LD-1285 0

THE CONTENTS OF THIS DRAWING ARE THE EXCLUSIVE PROPERTY OF THE TECHNICAL MATERIEL CORP. ITS UNAUTHORIZED USE OR REPRODUCTION IN WHOLE OR IN PART IS STRICTLY FORBIDDEN.



MARK TMC PART NO. WITH LATEST REVISION LETTER

MARKING PROCESS: AS PER TMC SPECIFICATION S-727.

LETTERING: 1/8 HIGH BLACK GOTHIC, LOCATED AS SHOWN.

REF: MS-3337

0	ORIGINAL RELEASE FOR PRODUCTION	5-27-64	0	A.M.		
SYM	DESCRIPTION	DATE	CH. NO.	DRAFTS	CHECKER	ENG. APP.
UNLESS OTHERWISE SPECIFIED:		SCALE: <i>H</i>				
DIMENSIONS ARE IN INCHES		MAXIMUM ALLOWABLE TOLERANCES HAVE BEEN DETERMINED AND ANY DEVIATIONS WILL BE CAUSE FOR REJECTION. REMOVE ALL BURRS AND SHARP EDGES				
TOLERANCES ON		REQ. PER UNIT				
FRACTIONS ± 1/64		1				
DECIMALS ± .005		GPT-200K				
ANGLES ± 1/2°		AX-397				

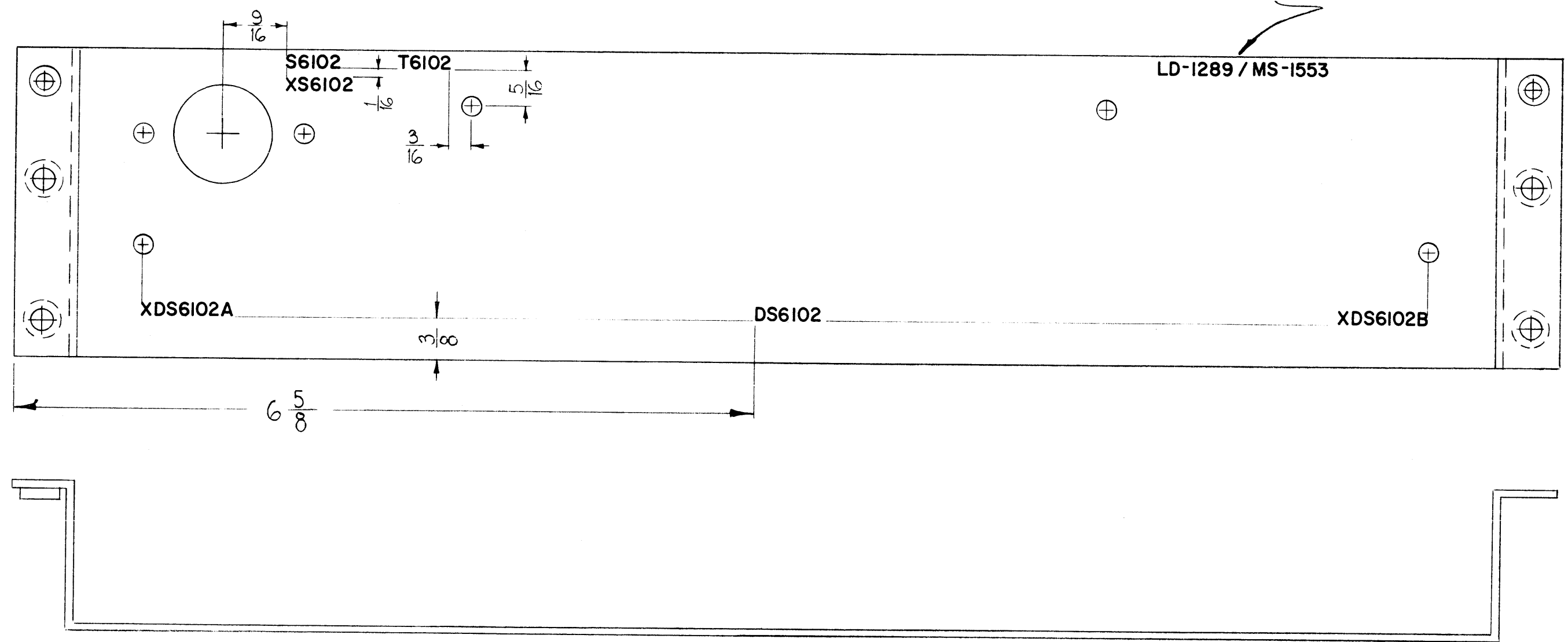
REQ.	ITEM	PART NO.	F. BUDETTI	DESCRIPTION	SYMBOL
			THE TECHNICAL MATERIEL CORP. MAMARONECK, NEW YORK		
STOCK SIZE			MARKING, PANEL,		
MATERIAL			CONNECTOR MTG		
TYPE & TEMPER		HEAT TREAT. SPEC.	DRAWN	CHECKED	FINAL APPROVAL
			<i>R. Chmault</i> 8-30-63	<i>aa</i>	<i>RT</i>
FINISH & SPEC. NO.		ELEC. DES. APP.	MECH. DES. APP.	LD-1285 0	
		<i>DR</i>	<i>me</i> 12/2/63		



LD-1289

THE CONTENTS OF THIS DRAWING ARE THE EXCLUSIVE PROPERTY OF THE TECHNICAL MATERIEL CORP. ITS UNAUTHORIZED USE OR REPRODUCTION IN WHOLE OR IN PART IS STRICTLY FORBIDDEN.

MARK TMC PART NO WITH LATEST REVISIONS



MARKING PROCESS: AS PER TMC SPECIFICATION S-727.  
 LETTERING: 1/8 HIGH BLACK GOTHIC, LOCATED AS SHOWN.

REF: MS 1553

O ORIGINAL RELEASE FOR PROD		5/12/64				
SYM	DESCRIPTION	DATE	CH. NO.	DRAFTS	CHECKER	ENG. APP.
UNLESS OTHERWISE SPECIFIED:		SCALE:				
DIMENSIONS ARE IN INCHES		MAXIMUM ALLOWABLE TOLERANCES HAVE BEEN DETERMINED AND ANY DEVIATIONS WILL BE CAUSE FOR REJECTION.				
TOLERANCES ON FRACTIONS ± 1/64 DECIMALS ± .005 ANGLES ± 1/2°		REMOVE ALL BURRS AND SHARP EDGES				

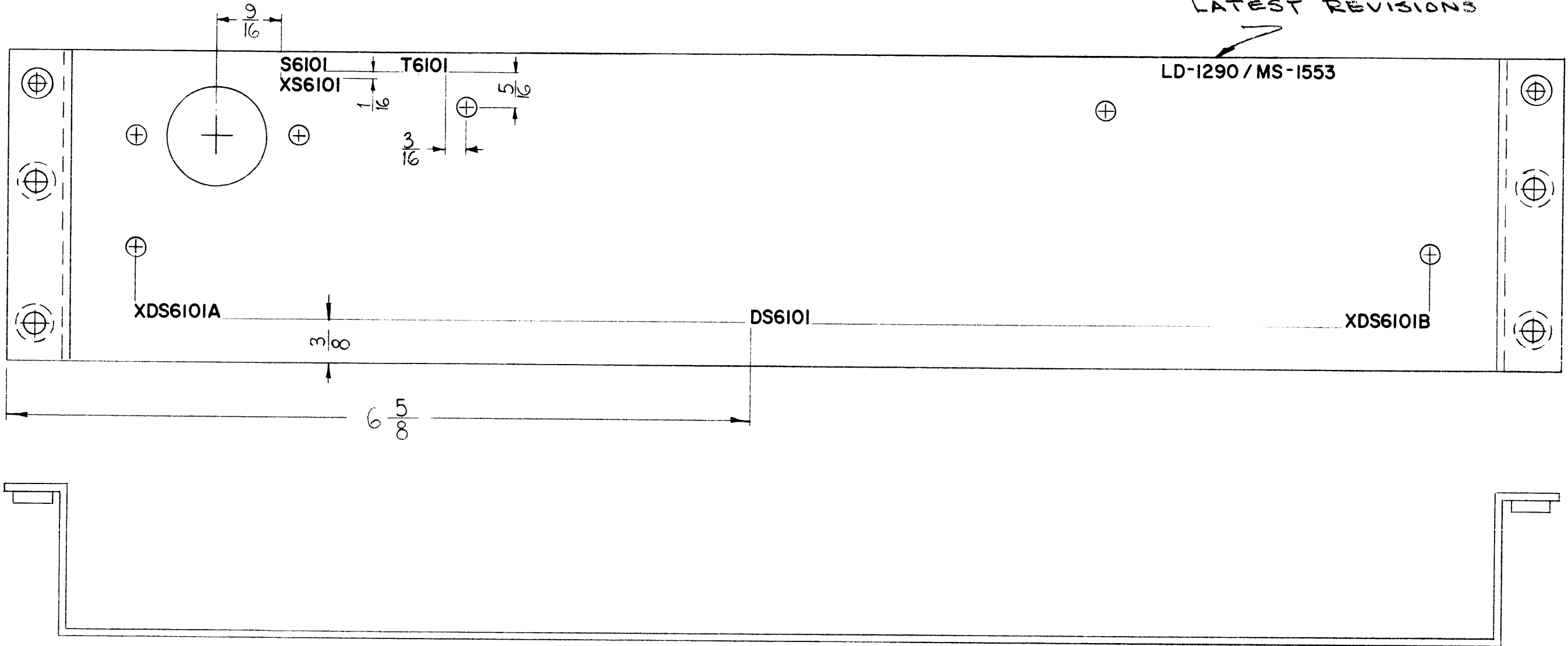
1	GPT-200K	AM-119	A-2275	9-7-63
REQ. PER UNIT	MODEL	SECTION	ASS'Y. NO.	DATE
USED ON				

REQ. ITEM	PART NO.	F. BUDETTI	DESCRIPTION	SYMBOL
		THE TECHNICAL MATERIEL CORP. MAMARONECK, NEW YORK		
STOCK SIZE		MARKING, METER LIGHT CHASSIS, LEFT SIDE, PS "A"		
MATERIAL				
		W. A. FRANCO	aa	RC
TYPE & TEMPER		HEAT TREAT. SPEC.	DRAWN	CHECKED
			ORB	RC 9/23/64
FINISH & SPEC. NO.		ELEC. DES. APP.	MECH. DES. APP.	LD-1289
				O

LD-1290

THE CONTENTS OF THIS DRAWING ARE THE EXCLUSIVE PROPERTY OF THE TECHNICAL MATERIEL CORP. ITS UNAUTHORIZED USE OR REPRODUCTION IN WHOLE OR IN PART IS STRICTLY FORBIDDEN.

MARK TMC PART NO WITH LATEST REVISIONS



**MARKING PROCESS:** AS PER TMC SPECIFICATION S-727.  
**LETTERING:** 1/8 HIGH BLACK GOTHIC, LOCATED AS SHOWN.

REF: MS 1553

ORIGINAL RELEASE FOR PROD		5/2/64				
SYM	DESCRIPTION	DATE	CH. NO.	DRAFTS	CHECKER	ENG. APP.
UNLESS OTHERWISE SPECIFIED:		SCALE:				
DIMENSIONS ARE IN INCHES		MAXIMUM ALLOWABLE TOLERANCES HAVE BEEN DETERMINED AND ANY DEVIATIONS WILL BE CAUSE FOR REJECTION. REMOVE ALL BURRS AND SHARP EDGES				
TOLERANCES ON FRACTIONS ± 1/64		DECIMALS ± .005		ANGLES ± 1/2°		

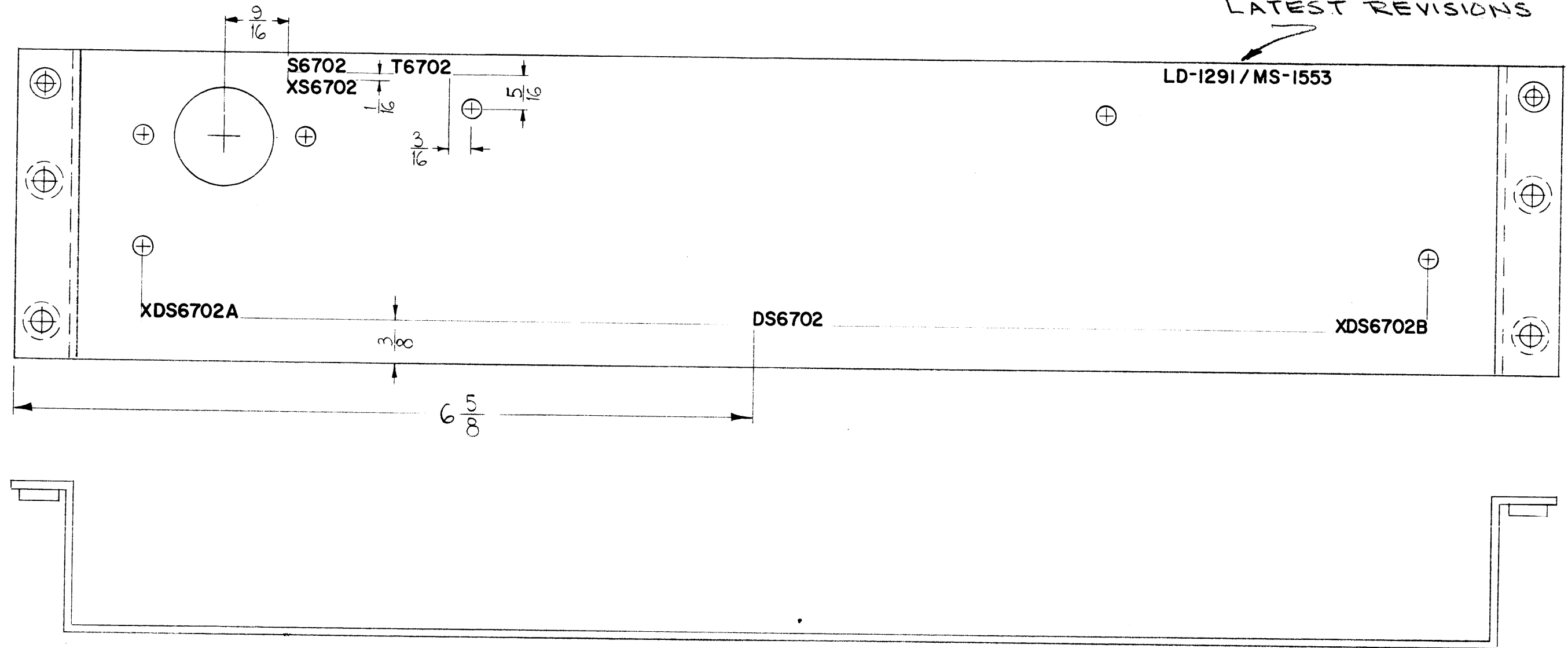
1	GPT-200K	AM-119	A-2275	9-7-63
REQ. PER UNIT	MODEL	SECTION	ASS'Y. NO.	DATE
USED ON				

REQ.	ITEM	PART NO.	F. BUDETTI	DESCRIPTION	SYMBOL
		THE TECHNICAL MATERIEL CORP. MAMARONECK, NEW YORK			
		MARKING, METER LIGHT CHASSIS, RIGHT SIDE, PS "A"			
		W.A. FRANCO		QA	REC
		DRAWN		CHECKED	FINAL APPROVAL
		OOR		MEC	LD-1290
		FINISH & SPEC. NO.		ELEC. DES. APP.	MECH. DES. APP.

LD-1291 A

THE CONTENTS OF THIS DRAWING ARE THE EXCLUSIVE PROPERTY OF THE TECHNICAL MATERIEL CORP. ITS UNAUTHORIZED USE OR REPRODUCTION IN WHOLE OR IN PART IS TRICTLY FORBIDDEN.

MARK TMC PART NO WITH LATEST REVISIONS



MARKING PROCESS: AS PER TMC SPECIFICATION S-727.  
 LETTERING: 1/8 HIGH BLACK GOTHIC, LOCATED AS SHOWN.

REF: MS 1553

A	ON TITLE BLOCK RT. SIDE WAS LT. SIDE	7/19/65	14480	W.V.	<i>[Signature]</i>	
O	ORIGINAL RELEASE FOR PROD	5/2/64				
SYM	DESCRIPTION	DATE	CH. NO.	DRAFTS	CHECKER	ENG. APP.

UNLESS OTHERWISE SPECIFIED:  
 DIMENSIONS ARE IN INCHES  
 TOLERANCES ON FRACTIONS ± 1/64 DECIMALS ± .005 ANGLES ± 1/2°  
 SCALE: MAXIMUM ALLOWABLE TOLERANCES HAVE BEEN DETERMINED AND ANY DEVIATIONS WILL BE CAUSE FOR REJECTION. REMOVE ALL BURRS AND SHARP EDGES

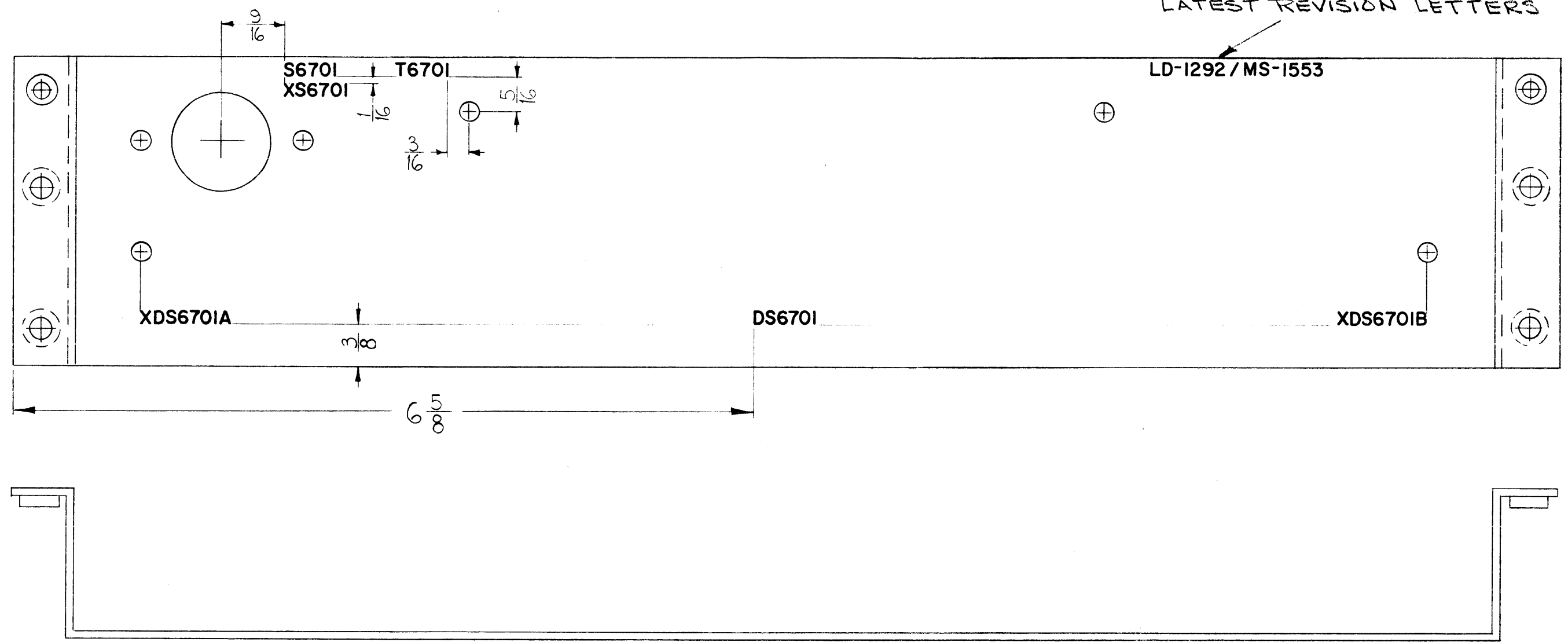
1	GPT-200K	AM-120	A-2275	9-7-63
REQ. PER UNIT	MODEL	SECTION	ASS'Y. NO.	DATE
USED ON				

REQ. ITEM	PART NO.	F. BUDETTI		DESCRIPTION	SYMBOL
		THE TECHNICAL MATERIEL CORP. MAMARONECK, NEW YORK			
		MARKING, METER LIGHT CHASSIS, RIGHT SIDE, PS "B"			
		W.A. FRANCO	aa	RAC	
		DRAWN	CHECKED	FINAL APPROVAL	
		<i>[Signature]</i>	<i>[Signature]</i>	LD-1291	
		ELEC. DES. APP.	MECH. DES. APP.	A	

LD-1292

THE CONTENTS OF THIS DRAWING ARE THE EXCLUSIVE PROPERTY OF THE TECHNICAL MATERIEL CORP. ITS UNAUTHORIZED USE OR REPRODUCTION IN WHOLE OR IN PART IS STRICTLY FORBIDDEN.

MARK TMC PART NO WITH LATEST REVISION LETTERS



LD-1292 / MS-1553

**MARKING PROCESS:** AS PER TMC SPECIFICATION S-727.  
**LETTERING:** 1/8 HIGH BLACK GOTHIC, LOCATED AS SHOWN.

REF: MS 1553

A	ON TITLE BLOCK LT. SIDE W/ REVISION	7/16/63	14480	W.A.	gcl	gcl
0	ORIGINAL RELEASE FOR PROD	5/12/64				
SYM	DESCRIPTION	DATE	CH. NO.	DRAFTS	CHECKER	ENG. APP.
UNLESS OTHERWISE SPECIFIED:		SCALE: $\frac{1}{8}$				
DIMENSIONS ARE IN INCHES		MAXIMUM ALLOWABLE TOLERANCES HAVE BEEN DETERMINED AND ANY DEVIATIONS WILL BE CAUSE FOR REJECTION. REMOVE ALL BURRS AND SHARP EDGES				
TOLERANCES ON FRACTIONS $\pm 1/64$ DECIMALS $\pm .005$ ANGLES $\pm 1/2^\circ$						

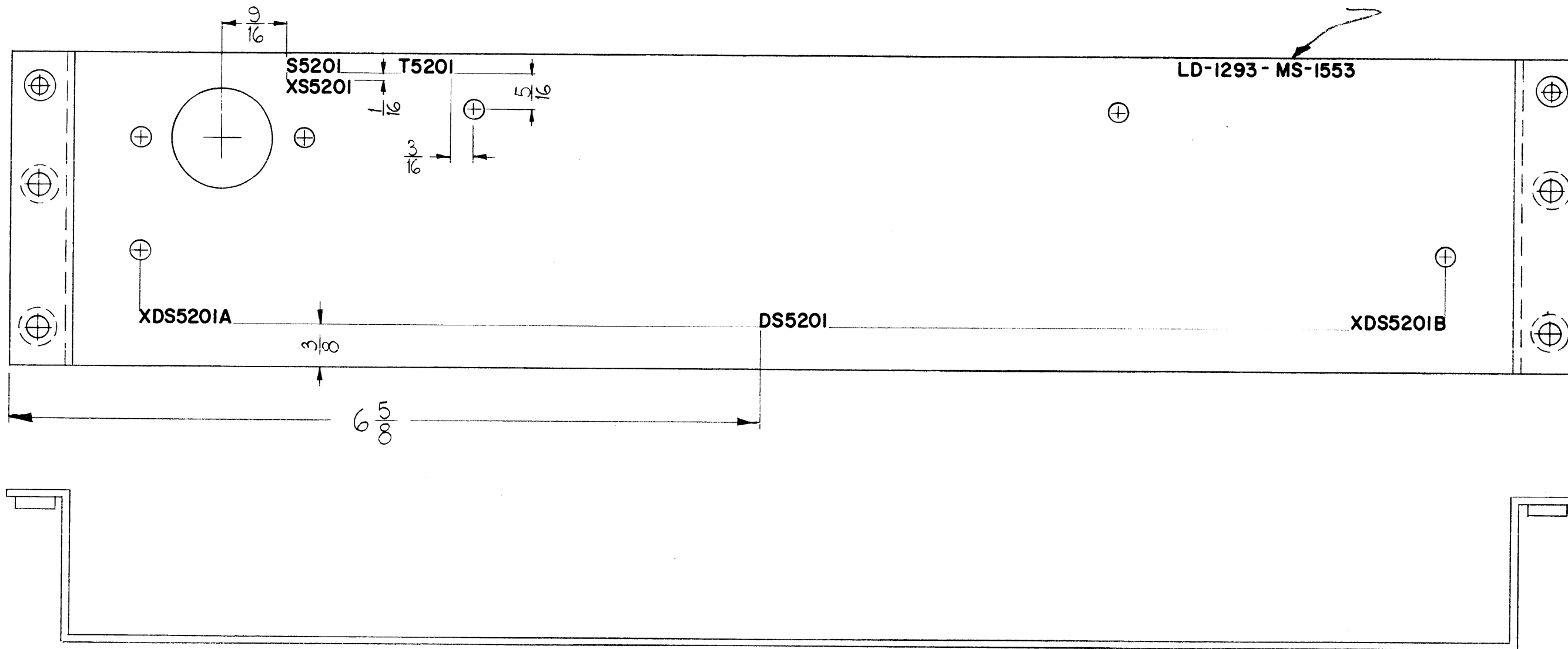
1	GPT-200K	AM-120	A-2275	9-7-63
REQ. PER UNIT	MODEL	SECTION	ASS'Y. NO.	DATE
USED ON				

REQ. ITEM	PART NO.	F. BUDETTI	DESCRIPTION	SYMBOL
STOCK SIZE		THE TECHNICAL MATERIEL CORP. MAMARONECK, NEW YORK		
MATERIAL		MARKING, METER LIGHT CHASSIS, LEFT SIDE, PS "B"		
TYPE & TEMPER		W.A. FRANCO	ud	Rott
HEAT TREAT. SPEC.		DRAWN	CHECKED	FINAL APPROVAL
FINISH & SPEC. NO.		W.A. FRANCO	ud	LD-1292
		ELEC. DES. APP.	MECH. DES. APP.	A

LD-1293

THE CONTENTS OF THIS DRAWING ARE THE EXCLUSIVE PROPERTY OF THE TECHNICAL MATERIEL CORP. ITS UNAUTHORIZED USE OR REPRODUCTION IN WHOLE OR IN PART IS STRICTLY FORBIDDEN.

MARK TMC PART NO WITH LATEST REVISIONS



MARKING PROCESS: AS PER TMC SPECIFICATION S-727.

LETTERING: 1/8 HIGH BLACK GOTHIC, LOCATED AS SHOWN.

REF: MS 1553

O ORIGINAL RELEASE FOR PROD 5/12/64						
SYM	DESCRIPTION	DATE	CH. NO.	DRAFTS	CHECKER	ENG. APP.
UNLESS OTHERWISE SPECIFIED:		SCALE:				
DIMENSIONS ARE IN INCHES		MAXIMUM ALLOWABLE TOLERANCES HAVE BEEN DETERMINED AND ANY DEVIATIONS WILL BE CAUSE FOR REJECTION. REMOVE ALL BURRS AND SHARP EDGES				
TOLERANCES ON FRACTIONS ± 1/64 DECIMALS ± .005 ANGLES ± 1/2°						

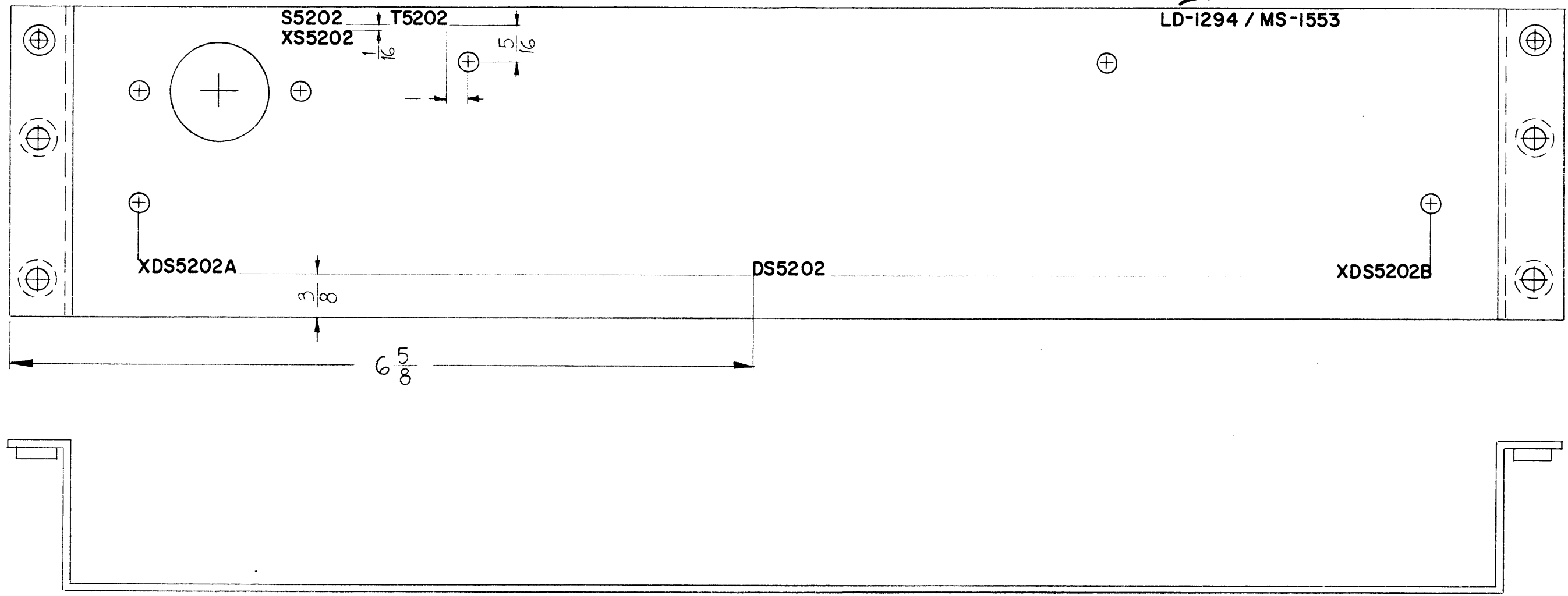
1	GPT-200K	AM-118	A-2275	9-7-63
REQ. PER UNIT	MODEL	SECTION	ASS'Y. NO.	DATE
USED ON				

REQ.	ITEM	PART NO.	F. BUDETTI	DESCRIPTION	SYMBOL
			THE TECHNICAL MATERIEL CORP. MAMARONECK, NEW YORK		
STOCK SIZE			MARKING, METER LIGHT CHASSIS, LEFT SIDE, PA		
MATERIAL			W.A. FRANCO	AA	RAE
TYPE & TEMPER		HEAT TREAT. SPEC.	DRAWN	CHECKED	FINAL APPROVAL
			W.A. FRANCO	AA	RAE
FINISH & SPEC. NO.		ELEC. DES. APP.	MECH. DES. APP.	LD-1293	O

LD-1294

THE CONTENTS OF THIS DRAWING ARE THE EXCLUSIVE PROPERTY OF THE TECHNICAL MATERIEL CORP. ITS UNAUTHORIZED USE OR REPRODUCTION IN WHOLE OR IN PART IS STRICTLY FORBIDDEN.

MARK TMC PART NO WITH LATEST REVISIONS



MARKING PROCESS: AS PER TMC SPECIFICATION S-727.  
 LETTERING: 1/8 HIGH BLACK GOTHIC, LOCATED AS SHOWN.

REF: MS-1553

0	ORIGINAL RELEASE FOR PROD	5/12/64				
SYM	DESCRIPTION	DATE	CH. NO.	DRAFTS	CHECKER	ENG. APP.
UNLESS OTHERWISE SPECIFIED:		SCALE: <i>H</i>				
DIMENSIONS ARE IN INCHES		MAXIMUM ALLOWABLE TOLERANCES HAVE BEEN DETERMINED AND ANY DEVIATIONS WILL BE CAUSE FOR REJECTION. REMOVE ALL BURRS AND SHARP EDGES				
TOLERANCES ON FRACTIONS ± 1/64 DECIMALS ± .005 ANGLES ± 1/2°		1				

REQ. PER UNIT	MODEL	SECTION	ASS'Y. NO.	DATE
1	GPT-200K	AM-118	A-2275	9-7-63

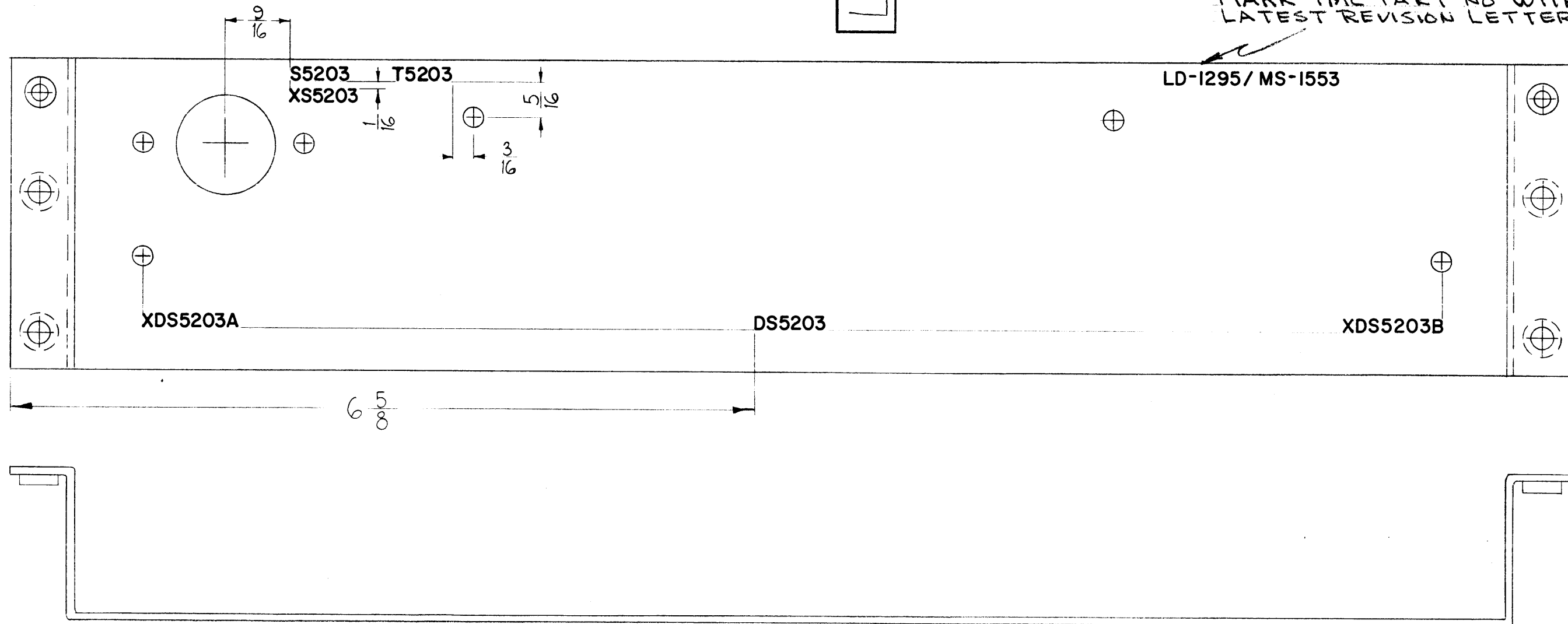
REQ.	ITEM	PART NO.	F. BUDETTI	DESCRIPTION	SYMBOL
			THE TECHNICAL MATERIEL CORP. MAMARONECK, NEW YORK		
			MARKING, METER LIGHT CHASSIS, MIDDLE, PA		
			W.A. FRANCO	<i>W.A. Franco</i>	<i>RJC</i>
			TYPE & TEMPER	HEAT TREAT. SPEC.	DRAWN
					CHECKED
					FINAL APPROVAL
					<i>W.A. Franco</i>
					LD-1294

LD-1295 0

REVISIONS

SYM	DESCRIPTION	DATE	E.M.N. NO.	DRAFT	CHKD	APPD
0	ORIGINAL RELEASE FOR PROD	5/12/64				

MARK TMC PART NO WITH LATEST REVISION LETTERS



MARKING PROCESS: AS PER TMC SPECIFICATION S-727.  
 LETTERING: 1/8 HIGH BLACK GOTHIC, LOCATED AS SHOWN.

REF: MS 1553

REQ'D.	ITEM	PART NUMBER	DESCRIPTION	SYMBOL
	F. BUDETTI		LIST OF MATERIAL	
MATERIAL		THE TECHNICAL MATERIEL CORP. MAMARONECK, NEW YORK		
FINISH		TITLE MARKING, METER LIGHT CHASSIS, RIGHT SIDE, PA		
UNLESS OTHERWISE SPECIFIED DIMENSIONS ARE IN INCHES AND INCLUDE CHEMICALLY APPLIED OR PLATED FINISHES		DRAWN W.A. FRANCO	DATE 9-9-63	FINAL APPROVAL <i>[Signature]</i>
DECIMALS .X ± .05 .XX ± .01 .XXX ± .005		CHECKED <i>[Signature]</i>	DATE 4/8/64	DATE 3/23/64
FRACTIONS ± 1/64 ANGLES ± 0° 30'		ELECT. DES. <i>[Signature]</i>	DATE 3/23/64	DATE
TOLERANCES		MECH. DES. <i>[Signature]</i>	DATE	DATE
			LD-1295	0
			SHEET	REV. LTR.

1	GPT-200K (AM-118)	A-2275
Q'TY./UNIT	MODEL USED ON	ASS'Y. NO.
SCALE 1/1	CODE A	
THE CONTENTS OF THIS DRAWING ARE THE EXCLUSIVE PROPERTY OF THE TECHNICAL MATERIEL CORP. ITS UNAUTHORIZED USE OR REPRODUCTION IN WHOLE OR IN PART IS STRICTLY FORBIDDEN.		

NOTES