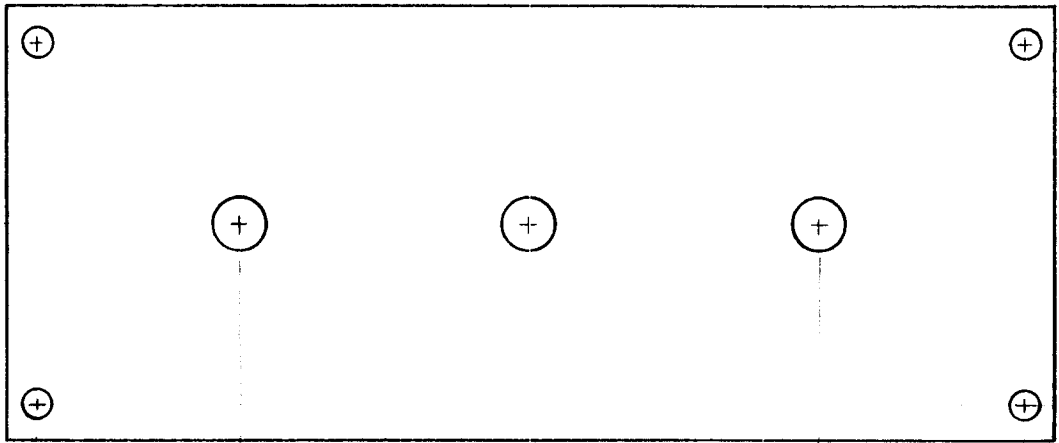
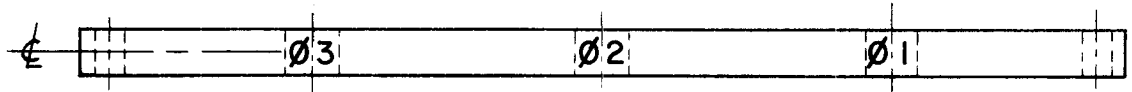


THE CONTENTS OF THIS DRAWING ARE THE EXCLUSIVE PROPERTY OF THE TECHNICAL MATERIEL CORP. ITS UNAUTHORIZED USE FOR REPRODUCTION IN WHOLE OR IN PART IS STRICTLY FORBIDDEN.

REQ. PER UNIT	USED ON			LD-1200
	MODEL	ASS'Y. NO.	DATE	
1	GPT-40K	AX-214	3-18-63	



NOTE:  
 LETTERING:  
 1/8 HIGH BLACK GOTHIC  
 MARKING PROCESS:  
 PER TMC SPEC. S-727  
 ALL LETTER GROUPS TO  
 BE CENTERED AS SHOWN.



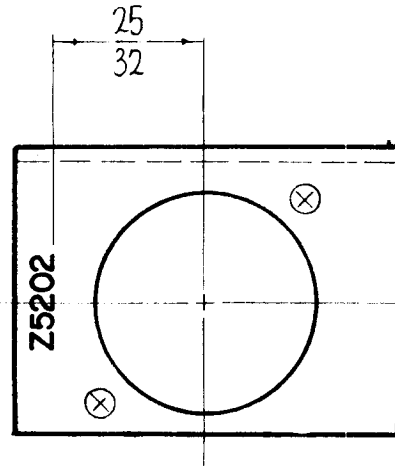
REF: PX-568

							REQ. ITEM	PART NO.	BUDETTI	DESCRIPTION	SYMBOL	
							STOCK SIZE		THE TECHNICAL MATERIEL CORP. MAMARONECK, NEW YORK			
							MATERIAL		LETTERING, BASE BOARD LINE FEED			
SYM	DESCRIPTION	DATE	CH. NO.	DRAFTS	CHECKER	ENG. APP.			T. RAMIREZ	<i>JDR</i> 3/19/63	<i>BP</i>	
UNLESS OTHERWISE SPECIFIED DIMENSIONS ARE IN INCHES AND INCLUDE CHEMICALLY APPLIED OR PLATED FINISHES		SCALE	1/2				TYPE & TEMPER	HEAT TREAT. SPEC.	DRAWN	CHECKED	FINAL APPROVAL	
DECIMALS .X ± .05 .XX ± .01 .XXX ± .005		TOLERANCES		FRACTIONS ± 1/64 ANGLES ± 0° 30'		CODE			<i>JDR</i>		LD-1200	
							FINISH & SPEC. NO.		ELEC. DES. APP.	MECH. DES. APP.		

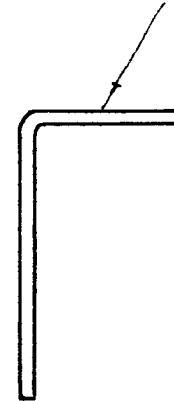


THE CONTENTS OF THIS DRAWING ARE THE EXCLUSIVE PROPERTY OF THE TECHNICAL MATERIEL CORP. ITS UNAUTHORIZED USE FOR REPRODUCTION IN WHOLE OR IN PART IS STRICTLY FORBIDDEN.

REQ. PER UNIT	USED ON		LD-1206
	MODEL	ASS'Y. NO.	
1	GPT-200K	AM-118	7 - 3 - 63



MARK TMC NO. LD1206 - /MS 3217 WITH LATEST REVISION LETTERS ON THIS SURFACE.



MARKING PROCESS: AS PER TMC SPECIFICATION S-727.

LETTERING: 1/8 HIGH BLACK GOTHIC, LOCATED AS SHOWN.

REF - TMC DWG NO. MS-3217

							REQ. ITEM	PART NO.	F. BUDETTI	DESCRIPTION	SYMBOL		
							STOCK SIZE		THE TECHNICAL MATERIEL CORP. MAMARONECK. NEW YORK				
							MATERIAL		LETTERING, BRACKET METERING CIRCUIT MOUNTING				
SYM	DESCRIPTION	DATE	CH. NO.	DRAFTS	CHECKER	ENG. APP.	TYPE & TEMPER		HEAT TREAT. SPEC.	DRAWN	CHECKED	FINAL APPROVAL	
UNLESS OTHERWISE SPECIFIED DIMENSIONS ARE IN INCHES AND INCLUDE CHEMICALLY APPLIED OR PLATED FINISHES		SCALE 1" = 1"									John C. Biele	aa	RJC
DECIMALS .X ± .05 .XX ± .01 .XXX ± .005	TOLERANCES	FRACTIONS ± 1/64 ANGLES ± 0° 30'	CODE A				FINISH & SPEC. NO.						LD-1206
							FINISH & SPEC. NO.		ELEC. DES. APP.	MECH. DES. APP.			

THE CONTENTS OF THIS DRAWING ARE THE EXCLUSIVE PROPERTY OF THE TECHNICAL MATERIEL CORP. ITS UNAUTHORIZED USE FOR REPRODUCTION IN WHOLE OR IN PART IS STRICTLY FORBIDDEN.

REQ. PER UNIT

1

MODEL

TER-100K

USED ON

ASS'Y. NO.

DATE

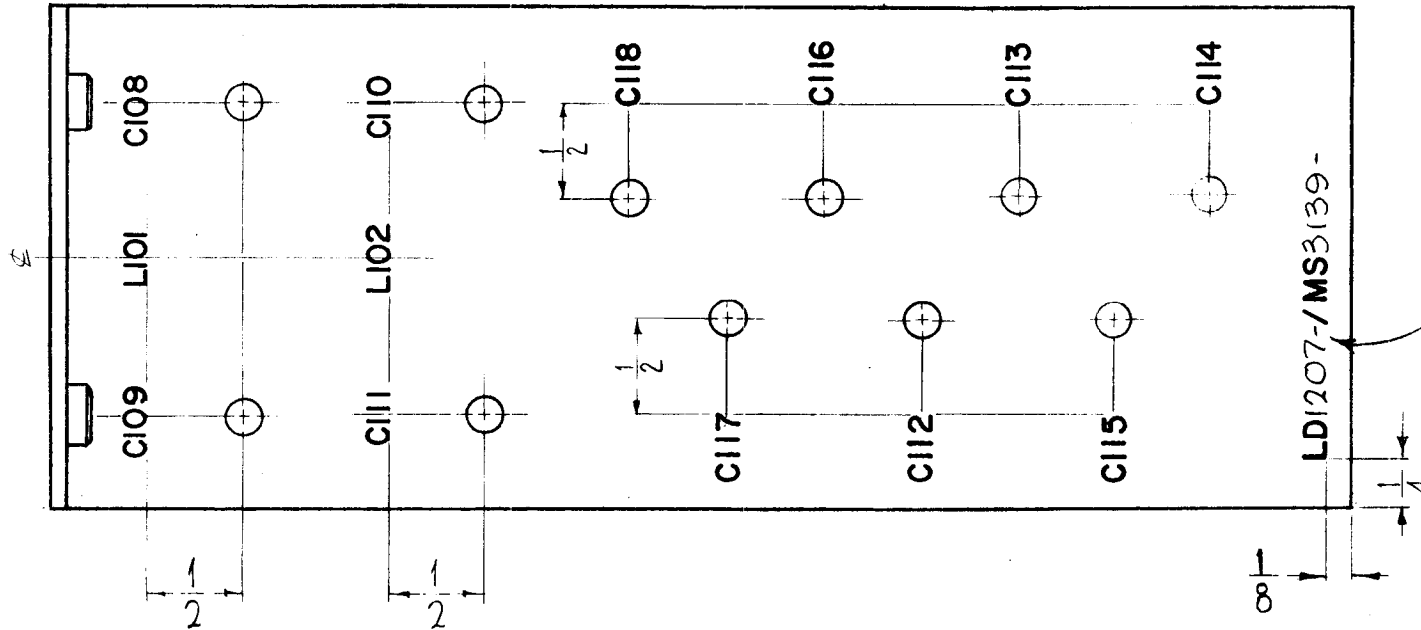
1-21-63

LD-1207

A

MARKING PROCESS: AS PER TMC SPECIFICATION S-727.

LETTERING: 1/8 HIGH BLACK GOTHIC, LOCATED AS SHOWN.

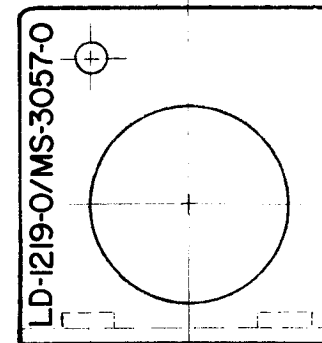
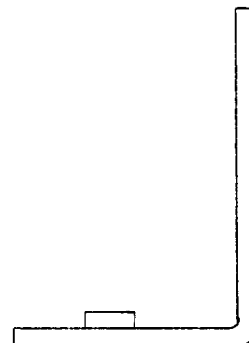
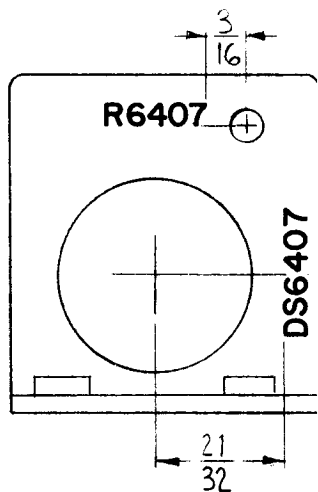


REF MS3139

							REQ. ITEM	PART NO.	F. BUDETTI	DESCRIPTION	SYMBOL
A	MARKING PROCESS S REF. ADDED	11/2/65	15044	ZVX	OCB	MRA				THE TECHNICAL MATERIEL CORP. MAMARONECK, NEW YORK	
Ø	ORIGINAL RELEASE FOR PRODUCTION	69-65	AA	JC			STOCK SIZE			MARKING, CAPACITOR MTG BRACKET	
X3	LETTERING RELOCATED	10-21-63								MARKING METHOD: AS PER TMC SPEC. S-727	
SYM	DESCRIPTION	DATE	CH. NO.	DRAFTS	CHECKER	ENG. APP.	MATERIAL				
UNLESS OTHERWISE SPECIFIED DIMENSIONS ARE IN INCHES AND INCLUDE CHEMICALLY APPLIED OR PLATED FINISHES		SCALE									
DECIMALS .X ± .05 .XX ± .01 .XXX ± .005		TOLERANCES		FRACTIONS ± 1/64 ANGLES ± 0° 30'		CODE	TYPE & TEMPER	HEAT TREAT. SPEC.	DRAWN	CHECKED	FINAL APPROVAL
							FINISH & SPEC. NO.	ELEC. DES. APP.	MECH. DES. APP.	LD-1207	A

THE CONTENTS OF THIS DRAWING ARE THE EXCLUSIVE PROPERTY OF THE TECHNICAL MATERIEL CORP. ITS UNAUTHORIZED USE FOR REPRODUCTION IN WHOLE OR IN PART IS STRICTLY FORBIDDEN.

REQ. PER UNIT	USED ON			LD-1219	O
	MODEL	ASS'Y. NO.	DATE		
1	GPT-200K	AP-110	4-24-63		



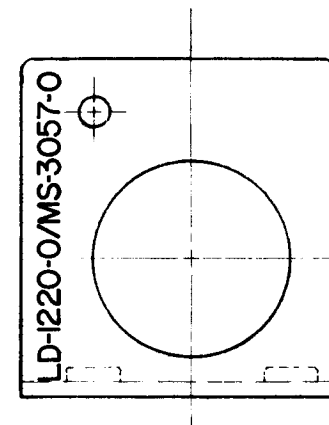
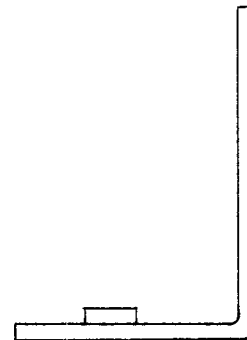
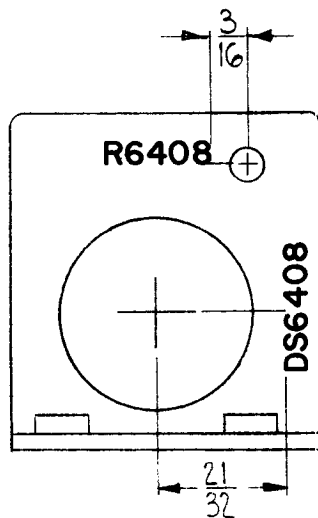
MARKING PROCESS: AS PER TMC SPECIFICATION S-727.

LETTERING: 1/8 HIGH BLACK GOTHIC, LOCATED AS SHOWN.

							REQ. ITEM	PART NO.	F. BUDETTI	DESCRIPTION	SYMBOL
									THE TECHNICAL MATERIEL CORP. MAMARONECK, NEW YORK		
								STOCK SIZE	MARKING, BRKT, MTG. INCANDESCENT LAMP		
									MARKING PROCESS: AS PER TMC SPEC. S727		
O	ORIGINAL RELEASE FOR PRODUCTION	3-264	AM								
SYM	DESCRIPTION	DATE	CH. NO.	DRAFTS	CHECKER	ENG. APP.		MATERIAL			
UNLESS OTHERWISE SPECIFIED DIMENSIONS ARE IN INCHES AND INCLUDE CHEMICALLY APPLIED OR PLATED FINISHES		SCALE		1:1					W.A. FRANCO	QC/S	KOL
									DRAWN	CHECKED	FINAL APPROVAL
DECIMALS	TOLERANCES	FRACTIONS	CODE						QA/RB	DB	LD-1219
.X ± .05		± 1/64	A						ELEC. DES. APP.	MECH. DES. APP.	O
.XX ± .01		ANGLES									
.XXX ± .005		± 0° 30'									
									FINISH & SPEC. NO.		

THE CONTENTS OF THIS DRAWING ARE THE EXCLUSIVE PROPERTY OF THE TECHNICAL MATERIEL CORP. ITS UNAUTHORIZED USE FOR REPRODUCTION IN WHOLE OR IN PART IS STRICTLY FORBIDDEN.

REQ. PER UNIT	USED ON			LD-1220	O
	MODEL	ASS'Y. NO.	DATE		
	GPT-200K	AP-110	4-24-63		



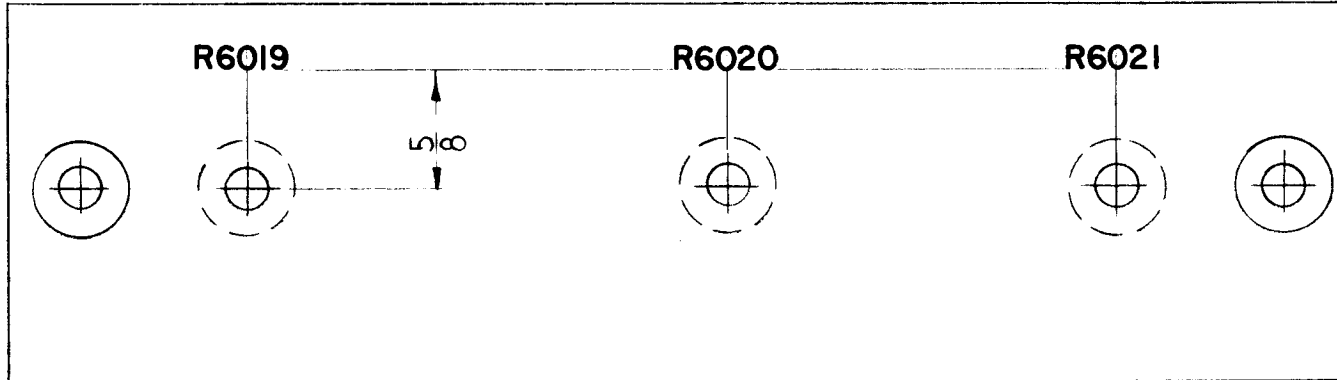
MARKING PROCESS: AS PER TMC SPECIFICATION S-727.

LETTERING: 1/8 HIGH BLACK GOTHIC, LOCATED AS SHOWN.

							REQ. ITEM	PART NO.	F. BUDETTI	DESCRIPTION	SYMBOL	
							STOCK SIZE		THE TECHNICAL MATERIEL CORP. MAMARONECK, NEW YORK			
O	ORIGINAL RELEASE FOR PRODUCTION	3-2-64	AM.				MATERIAL		MARKING, BRKT, MTG INCANDESCENT LAMP MARKING PROCESS: AS PER TMC SPEC. S-727			
SYM	DESCRIPTION	DATE	CH. NO.	DRAFTS	CHECKER	ENG. APP.	MATERIAL		W. A. FRANCO	<i>QCB</i>	<i>RDR</i>	
UNLESS OTHERWISE SPECIFIED DIMENSIONS ARE IN INCHES AND INCLUDE CHEMICALLY APPLIED OR PLATED FINISHES		SCALE					TYPE & TEMPER		HEAT TREAT. SPEC.	DRAWN	CHECKED	FINAL APPROVAL
		1:1								<i>QCB</i>	<i>S.D.</i>	LD-1220
DECIMALS .X ± .05 .XX ± .01 .XXX ± .005	TOLERANCES	FRACTIONS ± 1/64 ANGLES ± 0° 30'	CODE A				FINISH & SPEC. NO.		ELEC. DES. APP.	MECH. DES. APP.		O

THE CONTENTS OF THIS DRAWING ARE THE EXCLUSIVE PROPERTY OF THE TECHNICAL MATERIEL CORP. ITS UNAUTHORIZED USE FOR REPRODUCTION IN WHOLE OR IN PART IS STRICTLY FORBIDDEN.

REQ. PER UNIT	USED ON			LD-1222	0
	MODEL	ASS'Y. NO.	DATE		
1	GPT-200K	AP-109	4-25-63		



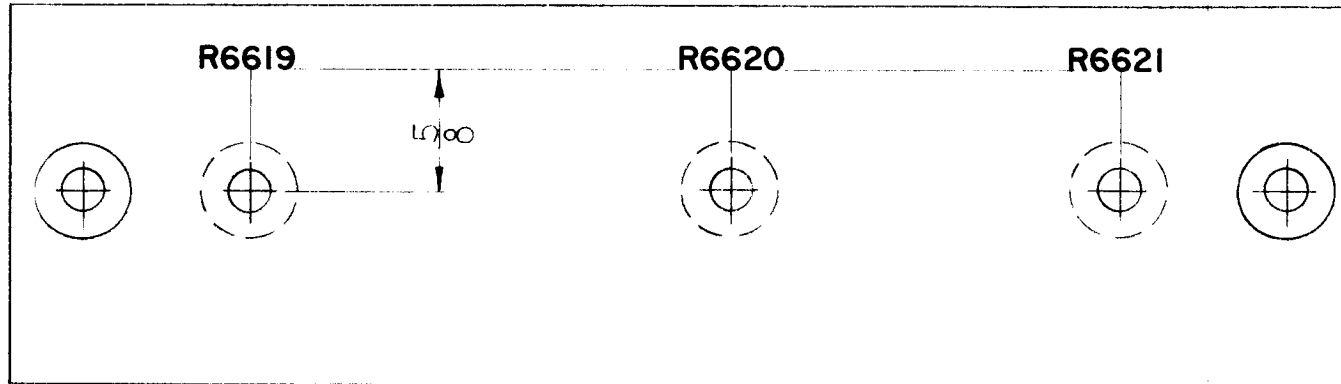
MARKING PROCESS ~ AS PER TMC SPEC. S727  
 LETTERING ~ 1/8 HIGH WHITE GOTHIC AS SHOWN UNLESS OTHERWISE SPECIFIED.

REF: TMC DWG. PX-726

							REG. ITEM	PART NO.	F. BUDETTI	DESCRIPTION	SYMBOL	
									THE TECHNICAL MATERIEL CORP. MAMARONECK, NEW YORK			
									LETTERING BOARD, RESISTOR CLIP MTG.			
0	ORIGINAL RELEASE	5.16.64		ASB								
SYM	DESCRIPTION	DATE	CH. NO.	DRAFTS	CHECKER	ENG. APP.	MATERIAL					
UNLESS OTHERWISE SPECIFIED DIMENSIONS ARE IN INCHES AND INCLUDE CHEMICALLY APPLIED OR PLATED FINISHES		SCALE							SRG.	aa	RC	
DECIMALS .X ± .05 .XX ± .01 .XXX ± .005		TOLERANCES		FRACTIONS ± 1/64 ANGLES ± 0° 30'		CODE	TYPE & TEMPER	HEAT TREAT. SPEC.	DRAWN	CHECKED	FINAL APPROVAL	
									JB	RC	LD-1222	
							FINISH & SPEC. NO.	ELEC. DES. APP.	MECH. DES. APP.		0	

THE CONTENTS OF THIS DRAWING ARE THE EXCLUSIVE PROPERTY OF THE TECHNICAL MATERIEL CORP. ITS UNAUTHORIZED USE FOR REPRODUCTION IN WHOLE OR IN PART IS STRICTLY FORBIDDEN.

REQ. PER UNIT	USED ON			LD-1223	0
	MODEL	ASS'Y. NO.	DATE		
1	GPT-200K	AP-111	4-25-63		



MARKING PROCESS ~ AS PER TMC SPEC. S727  
 LETTERING ~ 1/8 HIGH WHITE GOTHIC LOCATED AS SHOWN.  
 UNLESS OTHERWISE SPECIFIED.

REF: TMC DWG. PX-726

							REQ. ITEM	PART NO.	F. BUDETTI DESCRIPTION			SYMBOL
							STOCK SIZE		THE TECHNICAL MATERIEL CORP. MAMARONECK, NEW YORK			
0	ORIGINAL RELEASE	5.16.64		JTB			LETTERING BOARD, RESISTOR CLIP MTG.					
SYM	DESCRIPTION	DATE	CH. NO.	DRAFTS	CHECKER	ENG. APP.	MATERIAL					
UNLESS OTHERWISE SPECIFIED DIMENSIONS ARE IN INCHES AND INCLUDE CHEMICALLY APPLIED OR PLATED FINISHES						SCALE			SRG	aa	[Signature]	
						TYPE & TEMPER	HEAT TREAT. SPEC.	DRAWN	CHECKED	FINAL APPROVAL		
DECIMALS .X ± .05 .XX ± .01 .XXX ± .005						TOLERANCES	FRACTIONS ± 1/64 ANGLES ± 0° 30'		CODE			
						FINISH & SPEC. NO.		ELEC. DES. APP.	MECH. DES. APP.	LD-1223 0		



THE CONTENTS OF THIS DRAWING ARE THE EXCLUSIVE PROPERTY OF THE TECHNICAL MATERIEL CORP. ITS UNAUTHORIZED USE FOR REPRODUCTION IN WHOLE OR IN PART IS STRICTLY FORBIDDEN.

REQ. PER UNIT

1

USED ON

MODEL

GPT-200K

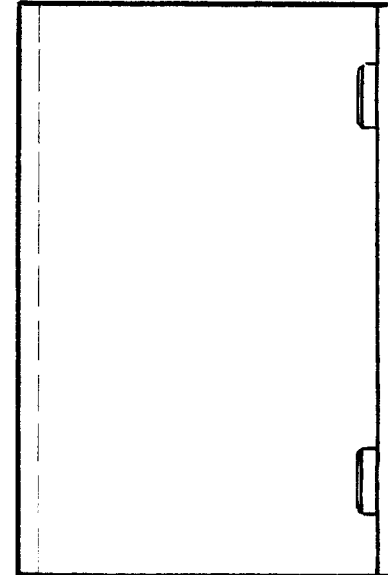
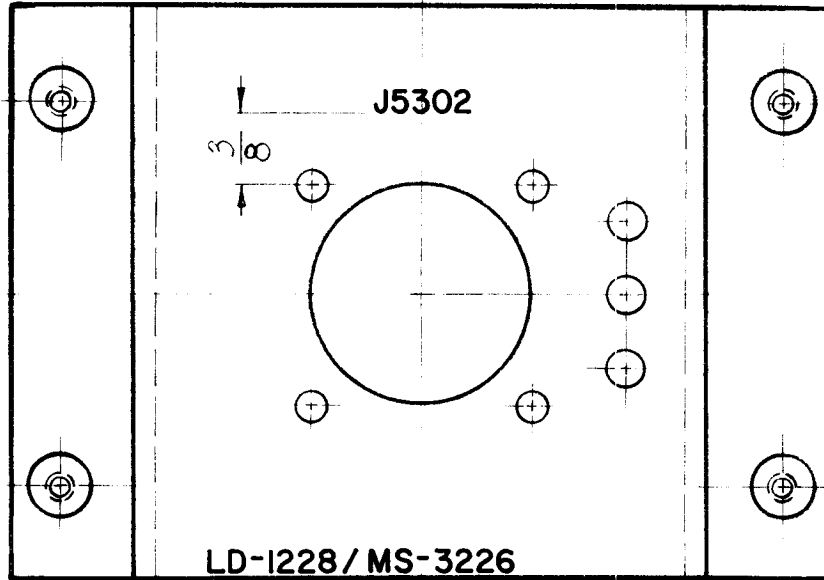
ASS'Y. NO.

AX-395

DATE

1-11-63

LD-1228 0



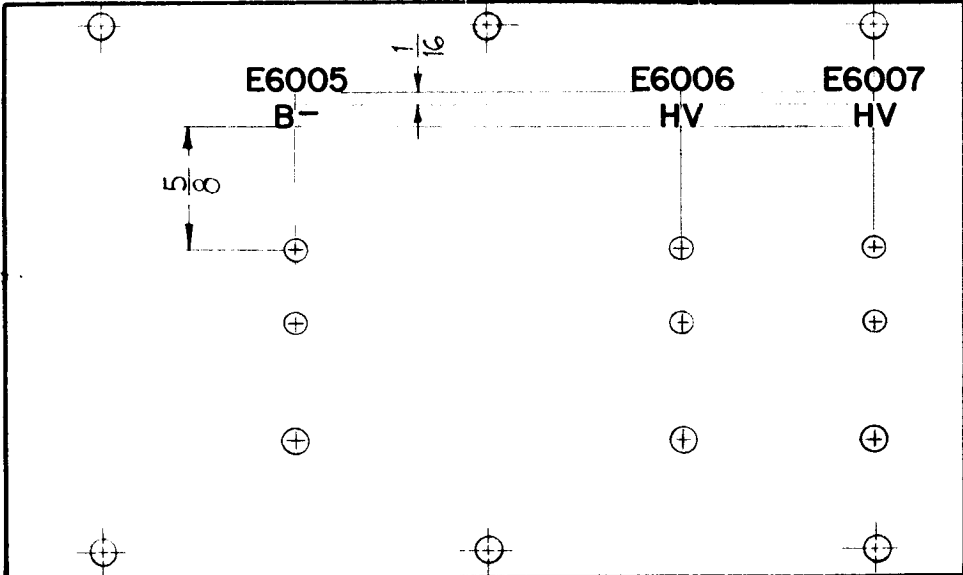
MARKING PROCESS: AS PER TMC SPECIFICATION S-727.  
 LETTERING: 1/8 HIGH GOTHIC, BLACK LOCATED AS SHOWN.

							REQ. ITEM	PART NO.	F. BUDETTI	DESCRIPTION	SYMBOL		
							STOCK SIZE		THE TECHNICAL MATERIEL CORP. MAMARONECK, NEW YORK				
							MATERIAL		LETTERING, CONNECTOR MOUNTING BRACKET				
0	ORIGINAL RELEASE	5.16.64		WSB									
SYM	DESCRIPTION	DATE	CH. NO.	DRAFTS	CHECKER	ENG. APP.	MATERIAL						
UNLESS OTHERWISE SPECIFIED DIMENSIONS ARE IN INCHES AND INCLUDE CHEMICALLY APPLIED OR PLATED FINISHES		SCALE							John C Biele	aa	RJC		
DECIMALS .X ± .05 .XX ± .01 .XXX ± .005		TOLERANCES		FRACTIONS ± 1/64 ANGLES ± 0° 30'		CODE			TYPE & TEMPER	HEAT TREAT. SPEC.	DRAWN	CHECKED	FINAL APPROVAL
							FINISH & SPEC. NO.		ELEC. DES. APP.		MECH. DES. APP.		LD-1228 0

THE CONTENTS OF THIS DRAWING ARE THE EXCLUSIVE PROPERTY OF THE TECHNICAL MATERIEL CORP. ITS UNAUTHORIZED USE OR REPRODUCTION IN WHOLE OR IN PART IS STRICTLY FORBIDDEN.

REQ. PER UNIT 1	USED ON		
	MODEL	ASS'Y. NO.	DATE
	EPT-200K	AP-109	9-10-62

LD-1237 0



MARKING PROCESS ~ AS PER TMC SPEC. S727  
 LETTERING ~ 1/8 HIGH WHITE GOTHIC  
 LOCATED AS SHOWN UNLESS OTHERWISE SPECIFIED.

REF - TMC DWG. DX-725

							REQ.	ITEM	PART NO.	DESCRIPTION			SYMBOL	
										THE TECHNICAL MATERIEL CORP. MAMARONECK, NEW YORK				
										LETTERING, H.V. CONTACT BOARD (CROWBAR MOUNTING)				
0	ORIGINAL RELEASE	5.16.64		WJB										
SYM	DESCRIPTION	DATE	CH. NO.	DRAFTS	CHECKER	ENG. APP.								
UNLESS OTHERWISE SPECIFIED: DIMENSIONS ARE IN INCHES TOLERANCES ON FRAC. ± 1/64 DEC. ± .005 ANGLES ± 1/2°		SCALE: MAXIMUM ALLOWABLE TOLERANCES HAVE BEEN DETERMINED AND ANY DEVIATIONS WILL BE CAUSE FOR REJECTION. REMOVE ALL BURRS AND SHARP EDGES									John C Biele	aa	RA	
							TYPE & TEMPER	HEATTREAT. SPEC.		DRAWN	CHECKED	FINAL APPROVAL		
										JB	MC	LD-1237	0	
							FINISH & SPEC. NO.			ELEC. DES. APP.	MECH. DES. APP.			

THE CONTENTS OF THIS DRAWING ARE THE EXCLUSIVE PROPERTY OF THE TECHNICAL MATERIEL CORP. ITS UNAUTHORIZED USE FOR REPRODUCTION IN WHOLE OR IN PART IS STRICTLY FORBIDDEN.

REQ. PER UNIT

1

USED ON

MODEL

GPT-200K

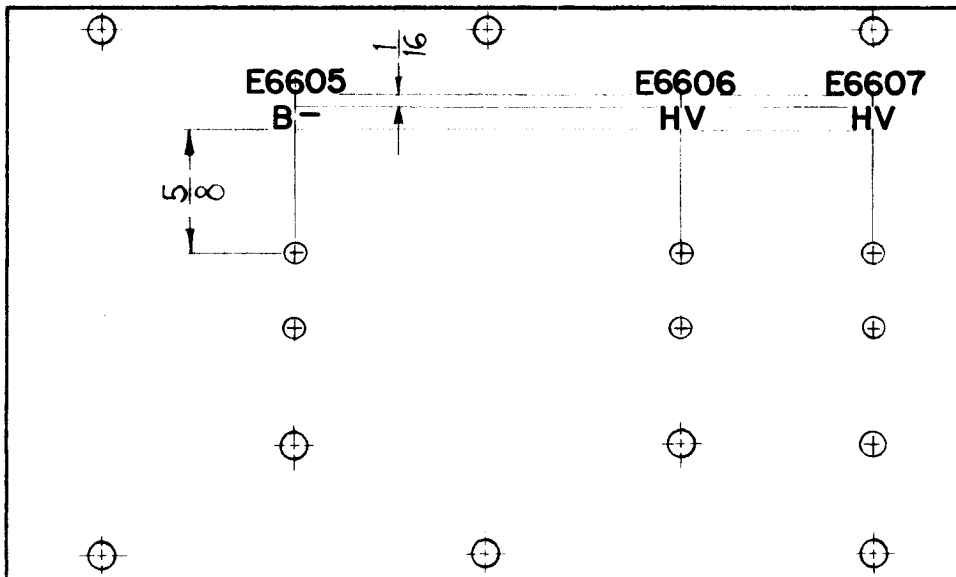
ASS'Y. NO.

AP-111

DATE

4-25-63

LD-1238 0



MARKING PROCESS ~ AS PER TMC SPEC. S727  
 LETTERING ~ 1/8 HIGH WHITE GOTHIC LOCATED AS SHOWN UNLESS OTHERWISE SPECIFIED.

REF: TMC DWG. PX-725

						REQ. ITEM	PART NO.		F. BUDETTI DESCRIPTION		SYMBOL	
						STOCK SIZE		THE TECHNICAL MATERIEL CORP. MAMARONECK, NEW YORK				
0	ORIGINAL RELEASE	5.16.64		NTB		MATERIAL		LETTERING H.V. CONTACT BOARD (CROWBAR MATING)				
SYM	DESCRIPTION	DATE	CH. NO.	DRAFTS	CHECKER	ENG. APP.	TYPE & TEMPER		HEAT TREAT. SPEC.	DRAWN	CHECKED	FINAL APPROVAL
UNLESS OTHERWISE SPECIFIED DIMENSIONS ARE IN INCHES AND INCLUDE CHEMICALLY APPLIED OR PLATED FINISHES						SCALE		SRG	aa	RC		
DECIMALS .X ± .05 .XX ± .01 .XXX ± .005	TOLERANCES	FRACTIONS ± 1/64 ANGLES ± 0° 30'	CODE							LD-1238 0		
						FINISH & SPEC. NO.		ELEC. DES. APP.	MECH. DES. APP.			

THE CONTENTS OF THIS DRAWING ARE THE EXCLUSIVE PROPERTY OF THE TECHNICAL MATERIEL CORP. ITS UNAUTHORIZED USE OR REPRODUCTION IN WHOLE OR IN PART IS STRICTLY FORBIDDEN.

REQ. PER UNIT

1

USED ON

MODEL

GPT-200K

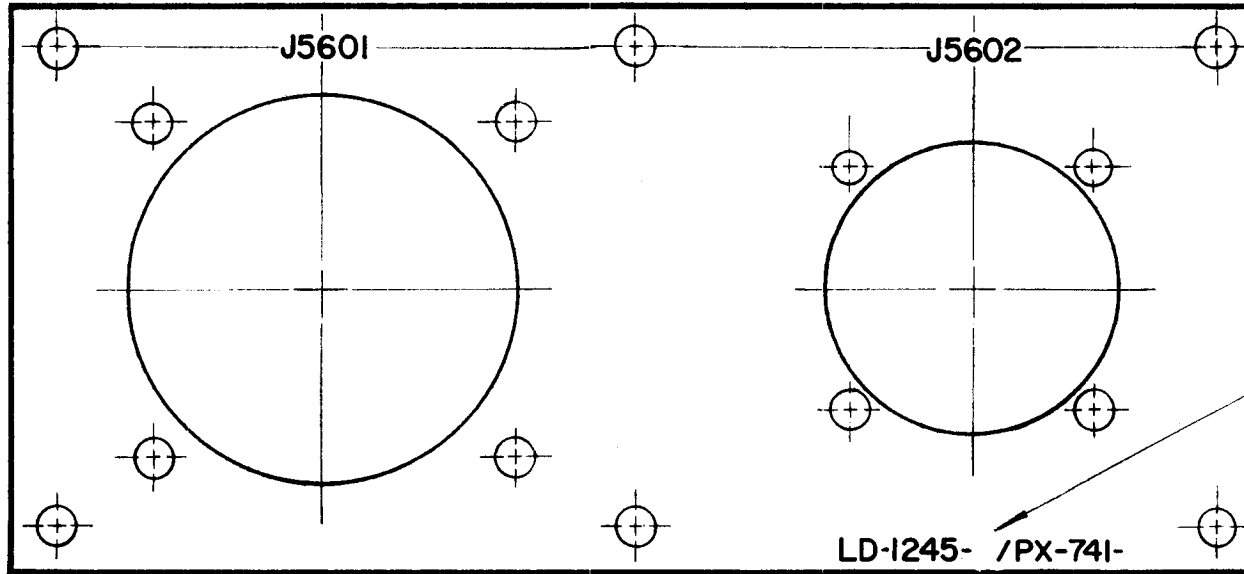
ASS'Y. NO.

AR-137

DATE

4-5-63

LD-1245 0



STAMP TMC PART NO. W/LATEST REV. LETTERS

FRONT VIEW SHOWN

MARKING PROCESS: AS PER TMC SPECIFICATION S-727.

LETTERING: 1/8 HIGH BLACK GOTHIC, LOCATED AS SHOWN.

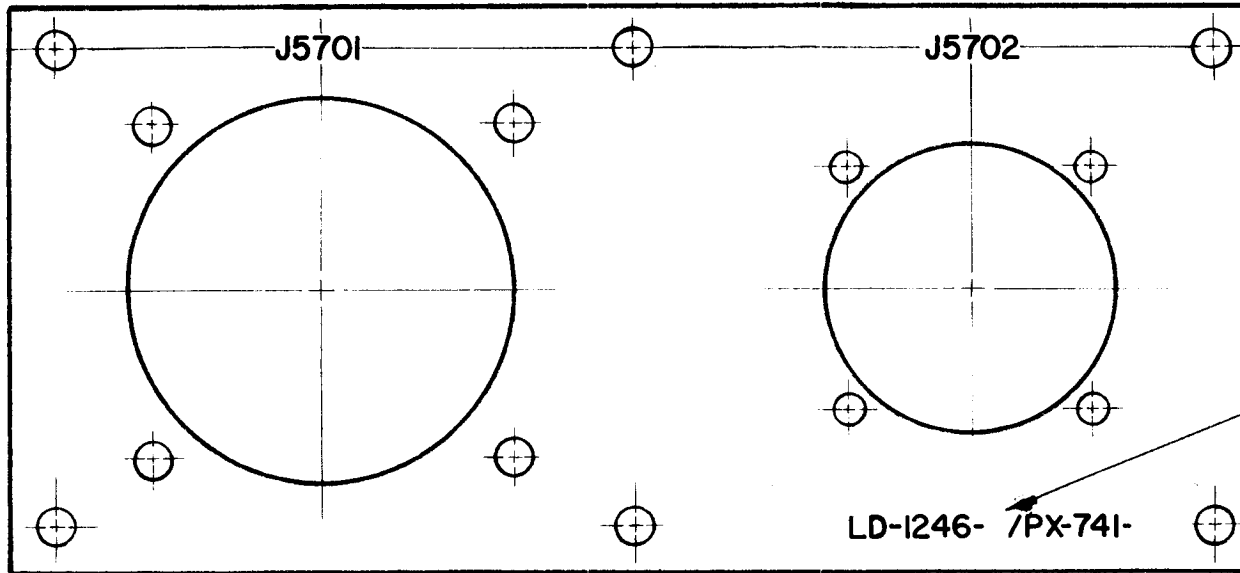
REF: PX-741-

REQ.	ITEM	PART NO.	F. BUDETTI DESCRIPTION			SYMBOL
			THE TECHNICAL MATERIEL CORP. MAMARONECK, NEW YORK			
			MARKING, CONNECTOR MTG. BOARD			
			MARKING METHOD: AS PER TMC SPEC. S727			
0.	ORIG. RELEASE FOR PROD.	4-27-64	SRG			
SYM	DESCRIPTION	DATE	CH. NO.	DRAFTS	CHECKER	ENG. APP.
	UNLESS OTHERWISE SPECIFIED: A	SCALE: #				
	DIMENSIONS ARE IN INCHES	MAXIMUM ALLOWABLE TOLERANCES HAVE BEEN DETERMINED AND ANY DEVIATIONS WILL BE CAUSE FOR REJECTION. REMOVE ALL BURRS AND SHARP EDGES				
	TOLERANCES ON					
	FRAC. ± 1/64 DEC. ± .05 ANGLES ± 1/2°					
					J.F. VITRO	aa ROL
					DRAWN	CHECKED
					203/8	820
					ELEC. DES. APP.	MECH. DES. APP.
						LD-1245 0

THE CONTENTS OF THIS DRAWING ARE THE EXCLUSIVE PROPERTY OF THE TECHNICAL MATERIEL CORP. ITS UNAUTHORIZED USE FOR REPRODUCTION IN WHOLE OR IN PART IS STRICTLY FORBIDDEN.

REQ. PER UNIT	USED ON		
	MODEL	ASS'Y. NO.	DATE
1	GPT-200K	AR-138	4-5-63

LD-1246 | 0



STAMP TMC PART NO.  
W/LATEST REV. LETTERS

FRONT VIEW SHOWN

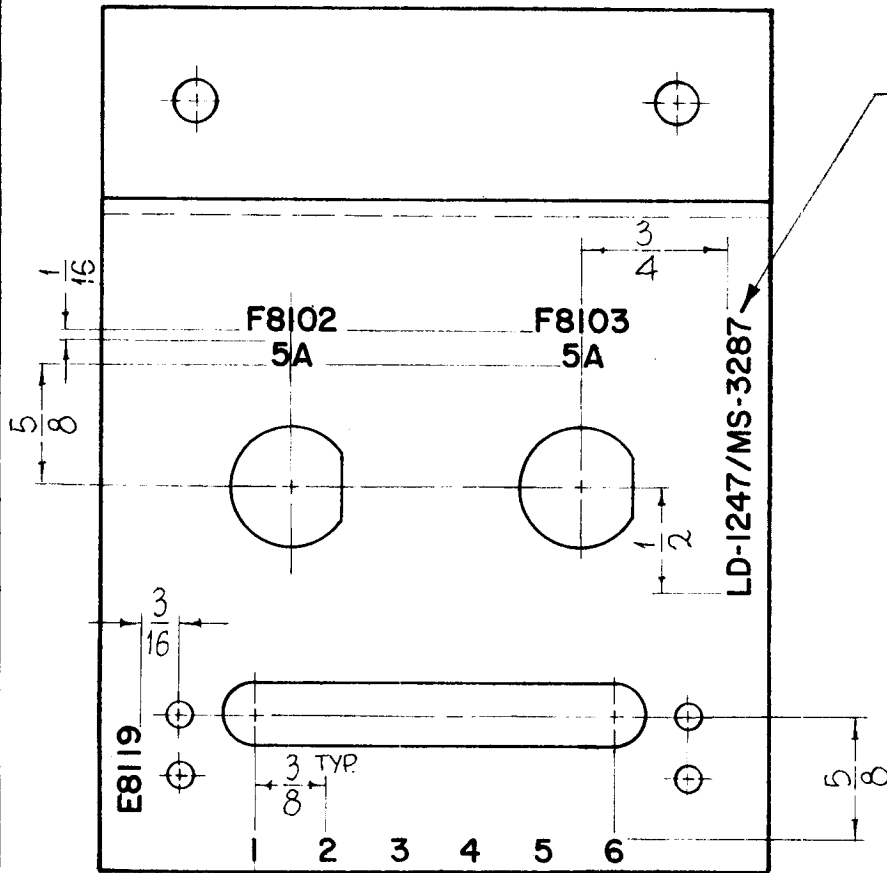
MARKING PROCESS: AS PER TMC SPECIFICATION S-727.

LETTERING: 1/8 HIGH BLACK GOTHIC, LOCATED AS SHOWN.

REF: PX-741

							REQ. ITEM	PART NO.	F. BUDETTI	DESCRIPTION	SYMBOL	
							STOCK SIZE		THE TECHNICAL MATERIEL CORP. MAMARONECK, NEW YORK			
0	ORIG. RELEASE FOR PROD.		4-27-64	SRG			MARKING, CONN. MTG. BD.		MARKING METHOD: AS PER TMC SPEC. S 727			
A	REDRAWN & REVISED						MATERIAL					
SYM	DESCRIPTION	DATE	CH. NO.	DRAFTS	CHECKER	ENG. APP.	TYPE & TEMPER		HEAT TREAT. SPEC.	DRAWN	CHE KED	FINAL APPROVAL
UNLESS OTHERWISE SPECIFIED DIMENSIONS ARE IN INCHES AND INCLUDE CHEMICALLY APPLIED OR PLATED FINISHES		SCALE		#						John C. Bida	aa	SR
DECIMALS .X ± .05 .XX ± .01 .XXX ± .005		FRACTIONS ± 1/64 ANGLES ± 0° 30'		TOLERANCES		CODE A				LB	SD	LD-1246   0
							FINISH & SPEC. NO.		ELEC. DES. APP.	MECH. DES. APP.		

REQ. PER UNIT	USED ON			LD-124710
	MODEL	ASS'Y. NO.	DATE	
1	GPT-40K AP-118	A-3482	10-2-63	



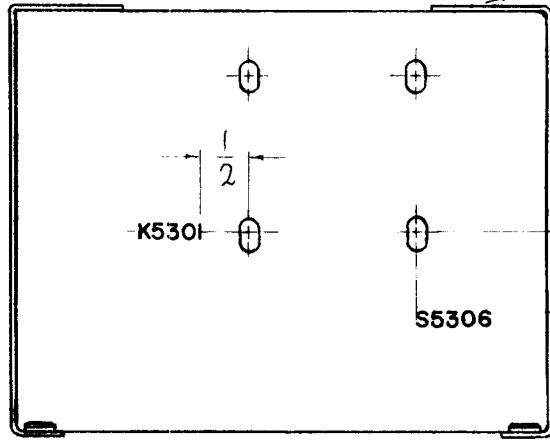
MARK TMC PART NO. WITH LATEST REVISION LETTERS

MARKING PROCESS: AS PER TMC SPECIFICATION S-727.

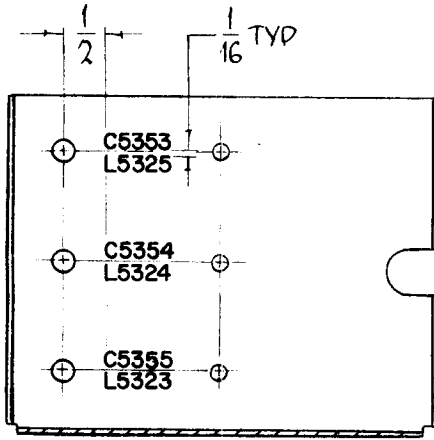
LETTERING: 1/8 HIGH BLACK GOTHIC, LOCATED AS SHOWN.

							REQ. ITEM	PART NO.	F. BUDETTI	DESCRIPTION	SYMBOL
									THE TECHNICAL MATERIEL CORP. MAMARONECK, NEW YORK		
									STOCK SIZE		
0	ORIG. RELEASE FOR PROD.	5.27.64		WJB					MARKING, BR'KT. COMPONENT MTG.		
SYM	DESCRIPTION	DATE	CH. NO.	DRAFTS	CHECKER	ENG. APP.			MARKING METHOD: AS PER TMC SPEC S727		
UNLESS OTHERWISE SPECIFIED DIMENSIONS ARE IN INCHES AND INCLUDE CHEMICALLY APPLIED OR PLATED FINISHES						SCALE			John C. Biele	QA	RLE
						1" = 1"			DRAWN CHECKED FINAL APPROVAL		
DECIMALS .X ± .05 .XX ± .01 .XXX ± .005	TOLERANCES	FRACTIONS ± 1/64 ANGLES ± 0° 30'	CODE A								LD-124710
								FINISH & SPEC. N.	ELEC. DES. APP.	MECH. DES. APP.	

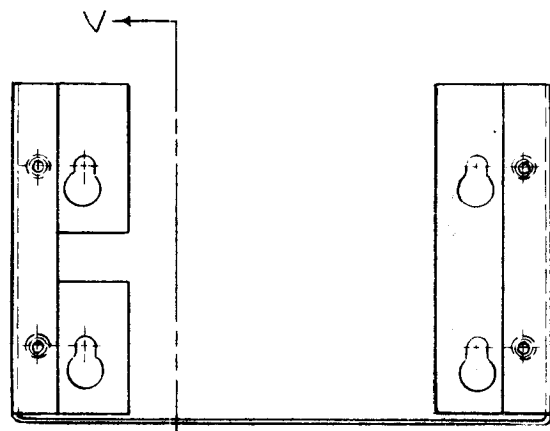
REQ. PER UNIT	USED ON			LD-1258 0
	MODEL	ASS'Y. NO.	DATE	
1	GPT-200K(Ax-395)	A-3478	2-11-64	



MARK LD-1258-0/MS-3640-0 ON THIS SURFACE OF THIS LIP.



SECTION V-V



REF: MS-3640

							REQ. ITEM	PART NO.	F. BUDETTI	DESCRIPTION	SYMBOL	
									THE TECHNICAL MATERIEL CORP. MAMARONECK, NEW YORK			
									MARKING, SHIELD, SHORTING RELAY			
									MARKING METHOD: AS PER TMC SPECS-727			
○	ORIGINAL RELEASE FOR PRODUCTION	3/23/64							John C. Biele			
SYM	DESCRIPTION	DATE	CH. NO.	DRAFTS	CHECKER	ENG. APP.			DRAWN	CHECKED	FINAL APPROVAL	
UNLESS OTHERWISE SPECIFIED DIMENSIONS ARE IN INCHES AND INCLUDE CHEMICALLY APPLIED OR PLATED FINISHES		SCALE										
DECIMALS: .X ± .05 .XX ± .01 .XXX ± .005	TOLERANCES	FRACTIONS ± 1/64 ANGLES ± 0° 30'	CODE A									LD-1258 0
							TYPE & TEMPER	HEAT TREAT. SPEC.				
							FINISH & SPEC. NO.		ELEC. DES. APP.	MECH. DES. APP.		

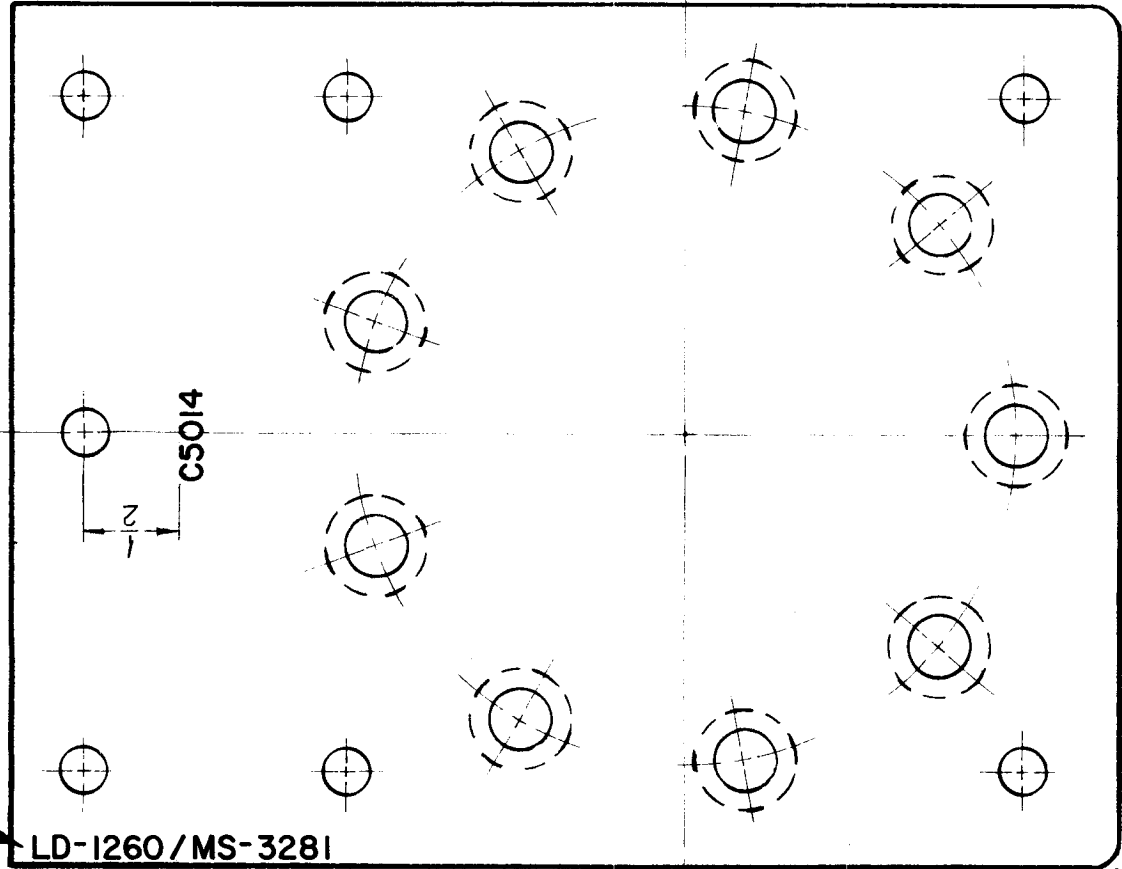




THE CONTENTS OF THIS DRAWING ARE THE EXCLUSIVE PROPERTY OF THE TECHNICAL MATERIEL CORP. ITS UNAUTHORIZED USE FOR REPRODUCTION IN WHOLE OR IN PART IS STRICTLY FORBIDDEN.

REQ. PER UNIT	USED ON		
	MODEL	ASS'Y. NO.	DATE
1	GPT-200K	AX-393	5-20-63

LD-1260 0



MARK TMC PART # W/LATEST REVISIONS

LD-1260 / MS-3281

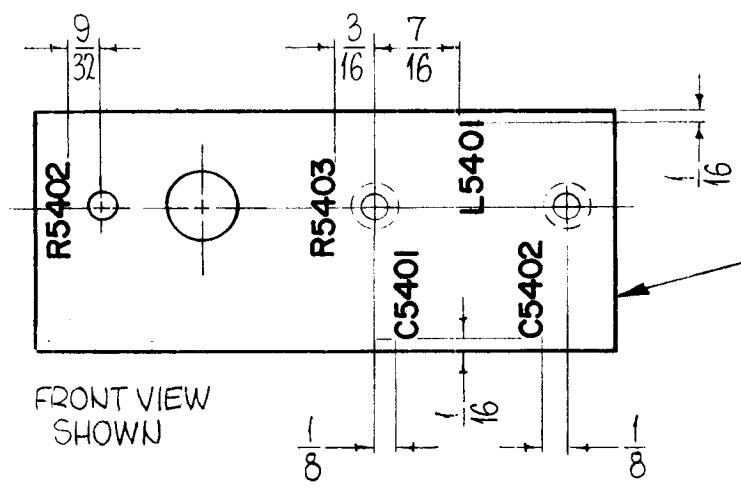
MARKING PROCESS: AS PER TMC SPECIFICATION S-727  
 LETTERING: 1/8 HIGH, GOTHIC BLACK, LOCATED AS SHOWN.

REF: MS 3281

							REQ. ITEM	PART NO.	F. BUDETTI	DESCRIPTION	SYMBOL		
							STOCK SIZE		THE TECHNICAL MATERIEL CORP. MAMARONECK, NEW YORK				
							MATERIAL		LETTERING, PLATE CAPACITOR MTG.				
○	ORIGINAL RELEASE FOR PRODUCTION	5-13-64	○	A.M.									
SYM	DESCRIPTION	DATE	CH. NO.	DRAFTS	CHECKER	ENG. APP.							
UNLESS OTHERWISE SPECIFIED DIMENSIONS ARE IN INCHES AND INCLUDE CHEMICALLY APPLIED OR PLATED FINISHES						SCALE							
DECIMALS .X ± .05 .XX ± .01 .XXX ± .005							TOLERANCES		FRACTIONS ± 1/64 ANGLES ± 0° 30'		CODE		
							TYPE & TEMPER	HEAT TREAT. SPEC.	DRAWN	CHECKED	FINAL APPROVAL		
							FINISH & SPEC. NO.		ELEC. DES. APP.	MECH. DES. APP.	LD-1260 0		



REQ. PER UNIT	USED ON			LD-1263	O
	MODEL	ASS'Y. N.	DATE		
1	GPT-200 K	AX-396	9-6-63		



MARKING TMC PART NO.  
LD-1263-O/MS-3493-O ON  
REAR.

**MARKING PROCESS: AS PER TMC SPECIFICATION S-727.**  
**LETTERING: 1/8 HIGH BLACK GOTHIC, LOCATED AS SHOWN.**

							REQ. ITEM	PART NO.	F. BUDETTI	DESCRIPTION	SYMBOL	
									THE TECHNICAL MATERIEL CORP. MAMARONECK. NEW YORK			
									MARKING, MTG. PLATE, RF FILTER			
									MARKING METHOD: AS PER TMC SPEC. S727			
0	ORIGINAL RELEASE FOR PRODUCTION	3-2-64		AM.								
SYM	DESCRIPTION	DATE	CH. NO.	DRAFTS	CHECKER	ENG. APP.	MATERIAL		W.A. FRANCO	JCS	RJR	
UNLESS OTHERWISE SPECIFIED DIMENSIONS ARE IN INCHES AND INCLUDE CHEMICALLY APPLIED OR PLATED FINISHES		SCALE		1:1			TYPE & TEMPER	HEAT TREAT. SPEC.	DRAWN	CHECKED	FINAL APPROVAL	
DECIMALS: .X ± .05 .XX ± .01 .XXX ± .005	TOLERANCES	FRACTIONS ± 1/64 ANGLES, ± 0° 30'	CODE	A			FINISH & SPEC. NO.		JCS	J.D.	LD-1263	O
								ELEC. DES. APP.	MECH. DES. APP.			

THE CONTENTS OF THIS DRAWING ARE THE EXCLUSIVE PROPERTY OF THE TECHNICAL MATERIEL CORP. ITS UNAUTHORIZED USE FOR REPRODUCTION IN WHOLE OR IN PART IS STRICTLY FORBIDDEN.

REQ. PER UNIT

USED ON

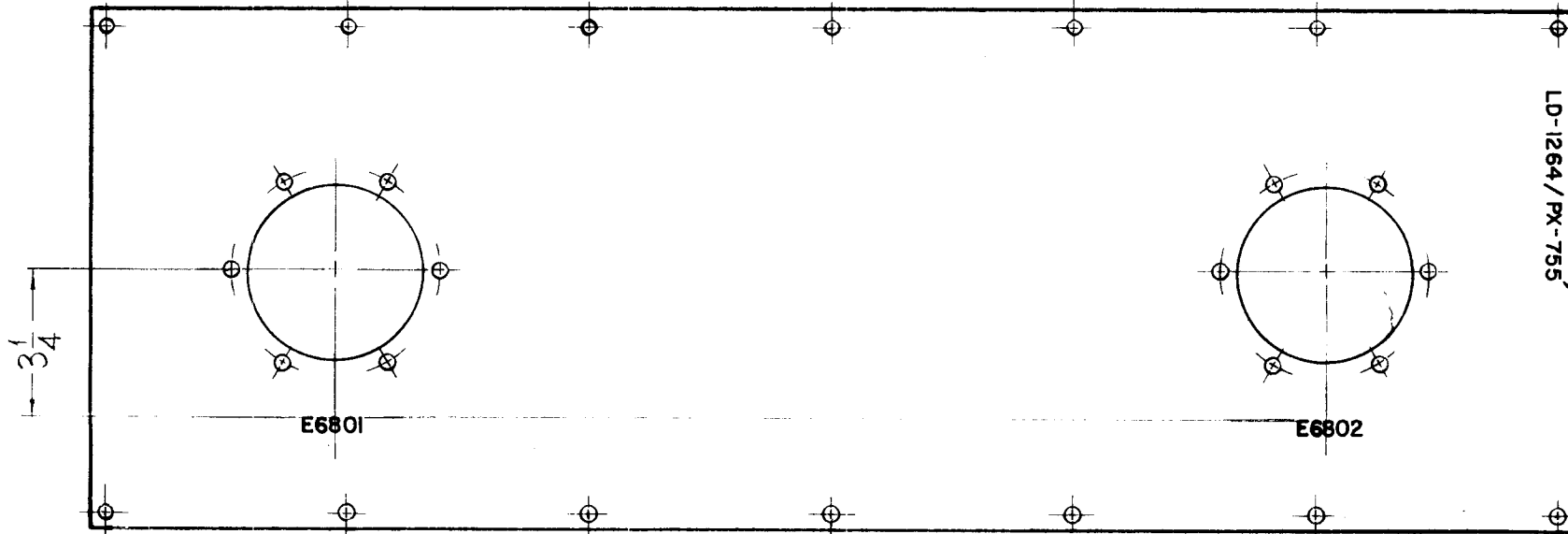
1 GPT-200K (AF-105)

ASS'Y. NO. A-2763

DATE 6-3-63

LD-1264 ○

MARKING PROCESS - AS PER TMC SPECIFICATION S-727.  
LETTERING - 1/8 HIGH, GOTHIC, WHITE, LOCATED AS SHOWN.



MARK TMC PART #  
W/LATEST REVISIONS

REF: PX 755

							REQ. ITEM	PART NO.	F. BUDETTI	DESCRIPTION	SYMBOL	
							STOCK SIZE		THE TECHNICAL MATERIEL CORP. MAMARONECK. NEW YORK			
							MATERIAL		LETTERING, SUPPORT, BOWL ASSEMBLY			
○	ORIGINAL RELEASE FOR PRODUCTION	5-13-64	0	A.M.			John C. Biele		aa	RZ		
SYM	DESCRIPTION	DATE	CH. NO.	DRAFTS	CHECKER	ENG. APP.	TYPE & TEMPER		HEAT TREAT. SPEC.	DRAWN	CHECKED	FINAL APPROVAL
UNLESS OTHERWISE SPECIFIED DIMENSIONS ARE IN INCHES AND INCLUDE CHEMICALLY APPLIED OR PLATED FINISHES		SCALE 1/4 (DO NOT SCALE)										
DECIMALS .X ± .05 .XX ± .01 .XXX ± .005	TOLERANCES	FRACTIONS ± 1/64 ANGLES ± 0° 30'	CODE A							2B	12/7/63	LD-1264 ○
							FINISH & SPEC. NO.		ELEC. DES. APP.	MECH. DES. APP.		



THE CONTENTS OF THIS DRAWING ARE THE EXCLUSIVE PROPERTY OF THE TECHNICAL MATERIEL CORP. ITS UNAUTHORIZED USE FOR REPRODUCTION IN WHOLE OR IN PART IS STRICTLY FORBIDDEN.

REQ. PER UNIT

1

USED ON

MODEL

GPT-200K

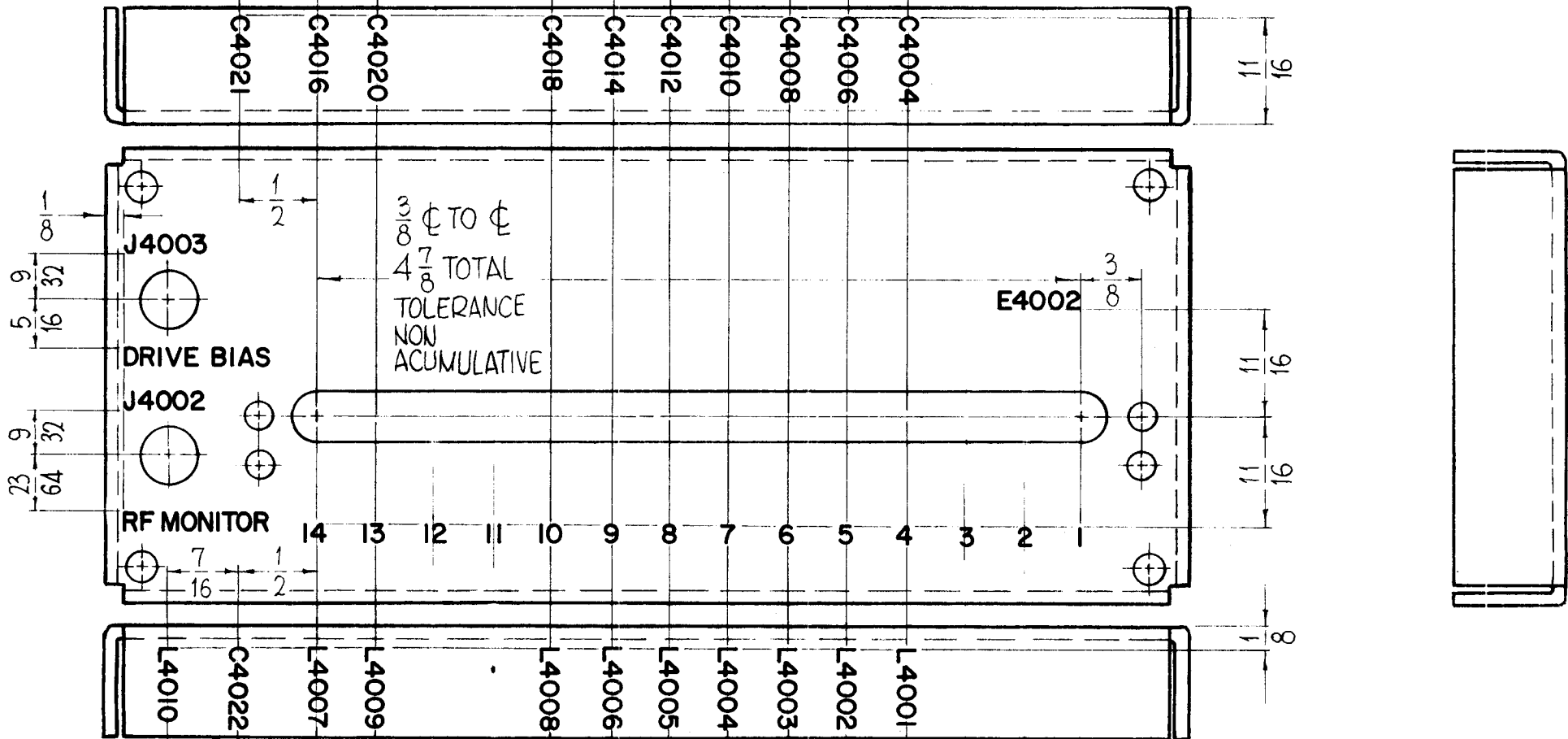
ASS'Y. NO.

AX-392

DATE

6-29-63

LD-1266



MARKING PROCESS: AS PER TMC SPECIFICATION S-727.

LETTERING: 1/8 HIGH BLACK GOTHIC, LOCATED AS SHOWN.

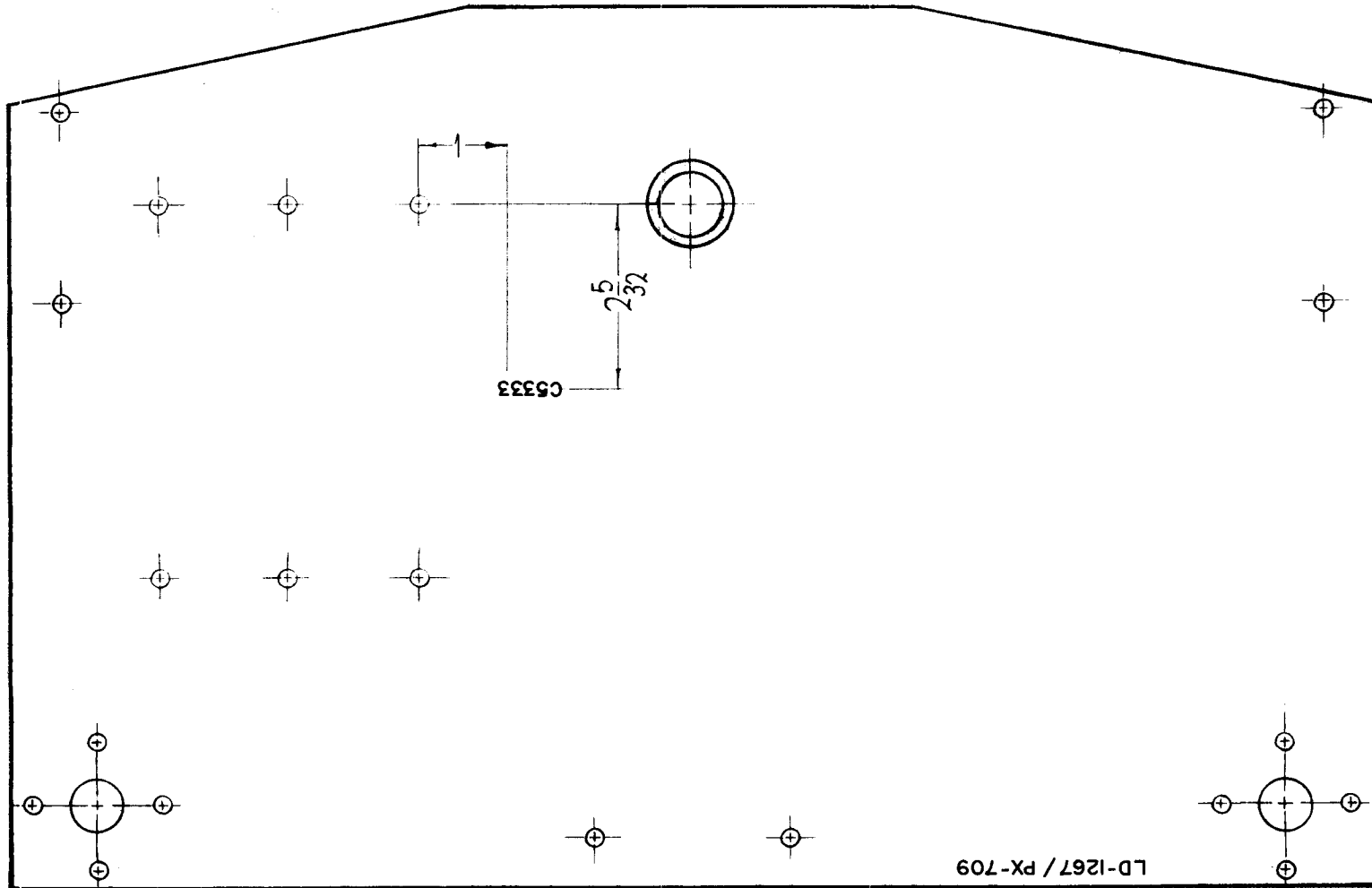
REF-TMC DWG NO. MS-3292

							REQ. ITEM	PART NO.	F. BUDETTI	DESCRIPTION	SYMBOL	
							STOCK SIZE		THE TECHNICAL MATERIEL CORP. MAMARONECK, NEW YORK			
ORIGINAL RELEASE FOR PRODUCTION							5/21/64	0	A.M	LETTERING, CHASSIS, COMPONENT MOUNTING		
SYM	DESCRIPTION	DATE	CH. NO.	DRAFTS	CHECKER	ENG. APP.	MATERIAL					
UNLESS OTHERWISE SPECIFIED DIMENSIONS ARE IN INCHES AND INCLUDE CHEMICALLY APPLIED OR PLATED FINISHES		SCALE					1" = 1"					
							TYPE & TEMPER	HEAT TREAT. SPEC.	DRAWN	CHECKED	FINAL APPROVAL	
							FINISH & SPEC. NO.		ELEC. DES. APP.	MECH. DES. APP.	LD-1266	
DECIMALS .X ± .05 .XX ± .01 .XXX ± .005		FRACTIONS ± 1/64 ANGLES ± 0° 30'		TOLERANCES			CODE A					

THE CONTENTS OF THIS DRAWING ARE THE EXCLUSIVE PROPERTY OF THE TECHNICAL MATERIEL CORP. ITS UNAUTHORIZED USE FOR REPRODUCTION IN WHOLE OR IN PART IS STRICTLY FORBIDDEN.

REQ. PER UNIT	USED ON		
	MODEL	ASS'Y. NO.	DATE
1	GPT-200K	AS-124	6-30-63

LD-1267 0



MARKING PROCESS:  
AS PER TMC  
SPECIFICATION S-727.

LETTERING: 1/8 HIGH  
WHITE GOTHIC,  
LOCATED AS SHOWN.

							REQ. ITEM	PART NO.	F. BUDETTI	DESCRIPTION	SYMBOL	
							STOCK SIZE		THE TECHNICAL MATERIEL CORP. MAMARONECK, NEW YORK			
									LETTERING, BOARD SUPPORT BANDSWITCH II-2			
							MATERIAL					
0	ORIG. RELEASE FOR PROD.	5-16-64		SRG				John C. Biele	aa	aa		
SYM	DESCRIPTION	DATE	CH. NO.	DRAFTS	CHECKER	ENG. APP.	SCALE		TYPE & TEMPER HEAT TREAT. SPEC. DRAWN CHECKED FINAL APPROVAL			
						1 1/2" = 1"						
UNLESS OTHERWISE SPECIFIED DIMENSIONS ARE IN INCHES AND INCLUDE CHEMICALLY APPLIED OR PLATED FINISHES												
DECIMALS	TOLERANCES	FRACTIONS	CODE							LD-1267 0		
.X ± .03		± 1/64										
.XX ± .01		ANGLES										
.XXX ± .005		± 0° 30'										
							FINISH & SPEC. N.		ELEC. DES. APP. MECH. DES. APP.			

THE CONTENTS OF THIS DRAWING ARE THE EXCLUSIVE PROPERTY OF THE TECHNICAL MATERIEL CORP. ITS UNAUTHORIZED USE FOR REPRODUCTION IN WHOLE OR IN PART IS STRICTLY FORBIDDEN.

REQ. PER UNIT

1

USED ON

MODEL

GPT-200K

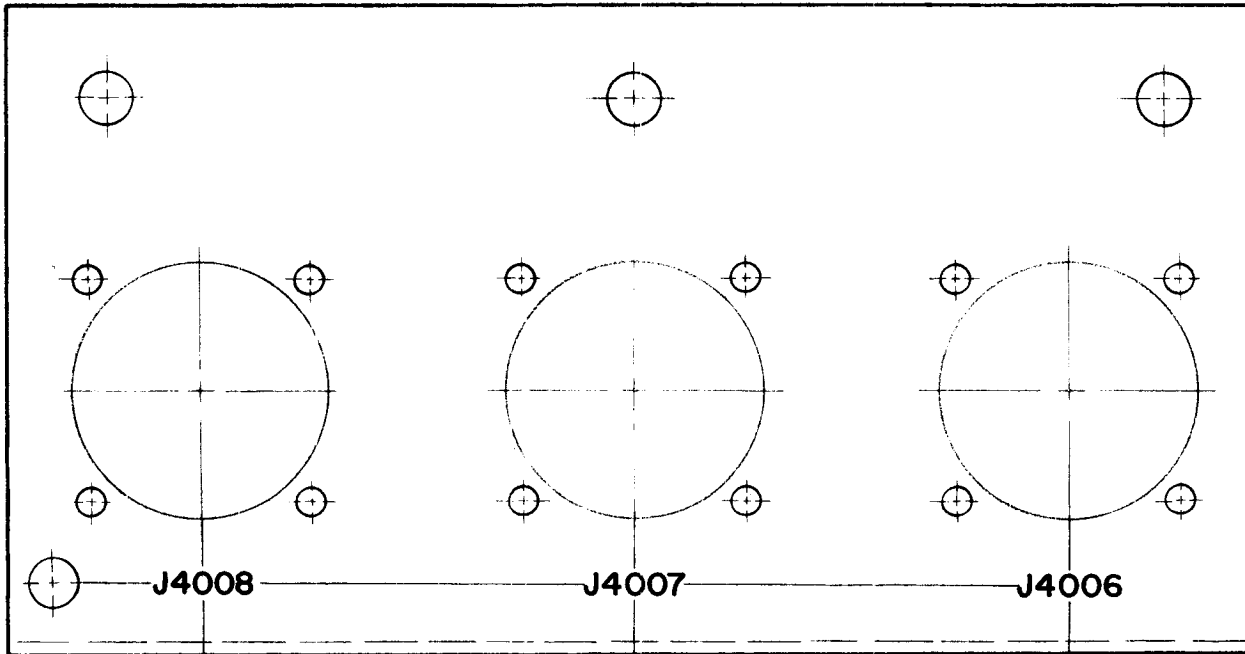
ASS'Y. NO.

AX-392

DATE

7-15-63

LD-1271



MARKING PROCESS:  
AS PER TMC SPEC.  
S-727.

LETTERING:  
1/8 HIGH BLACK GOTHIC,  
LOCATED AS SHOWN.

REF: MS-3305



							REQ. ITEM	PART NO.	F. BUDETTI	DESCRIPTION	SYMBOL	
							STOCK SIZE		THE TECHNICAL MATERIEL CORP. MAMARONECK, NEW YORK			
O ORIGINAL RELEASE FOR PRODUCTION							5/21/64	O	A.M.	LETTERING BRACKET RECEPTACLE MTG.		
SYM	DESCRIPTION	DATE	CH. NO.	DRAFTS	CHECKER	ENG. APP.	MATERIAL					
UNLESS OTHERWISE SPECIFIED DIMENSIONS ARE IN INCHES AND INCLUDE CHEMICALLY APPLIED OR PLATED FINISHES		SCALE	1-1						SRG	aa	<i>[Signature]</i>	
DECIMALS .X ± .05 .XX ± .01 .XXX ± .005		TOLERANCES	FRACTIONS ± 1/64 ANGLES ± 0° 30'	CODE A			TYPE & TEMPER	HEAT TREAT. SPEC.	DRAWN	CHECKED	FINAL APPROVAL	
									<i>[Signature]</i>	<i>[Signature]</i>	LD-1271	
							FINISH & SPEC. NO.		ELEC. DES. APP.	MECH. DES. APP.	<i>[Signature]</i>	



THE CONTENTS OF THIS DRAWING ARE THE EXCLUSIVE PROPERTY OF THE TECHNICAL MATERIEL CORP. ITS UNAUTHORIZED USE FOR REPRODUCTION IN WHOLE OR IN PART IS STRICTLY FORBIDDEN.

REQ. PER UNIT

1

MODEL

TER-25K-600B

USED ON

ASS'Y. NO.

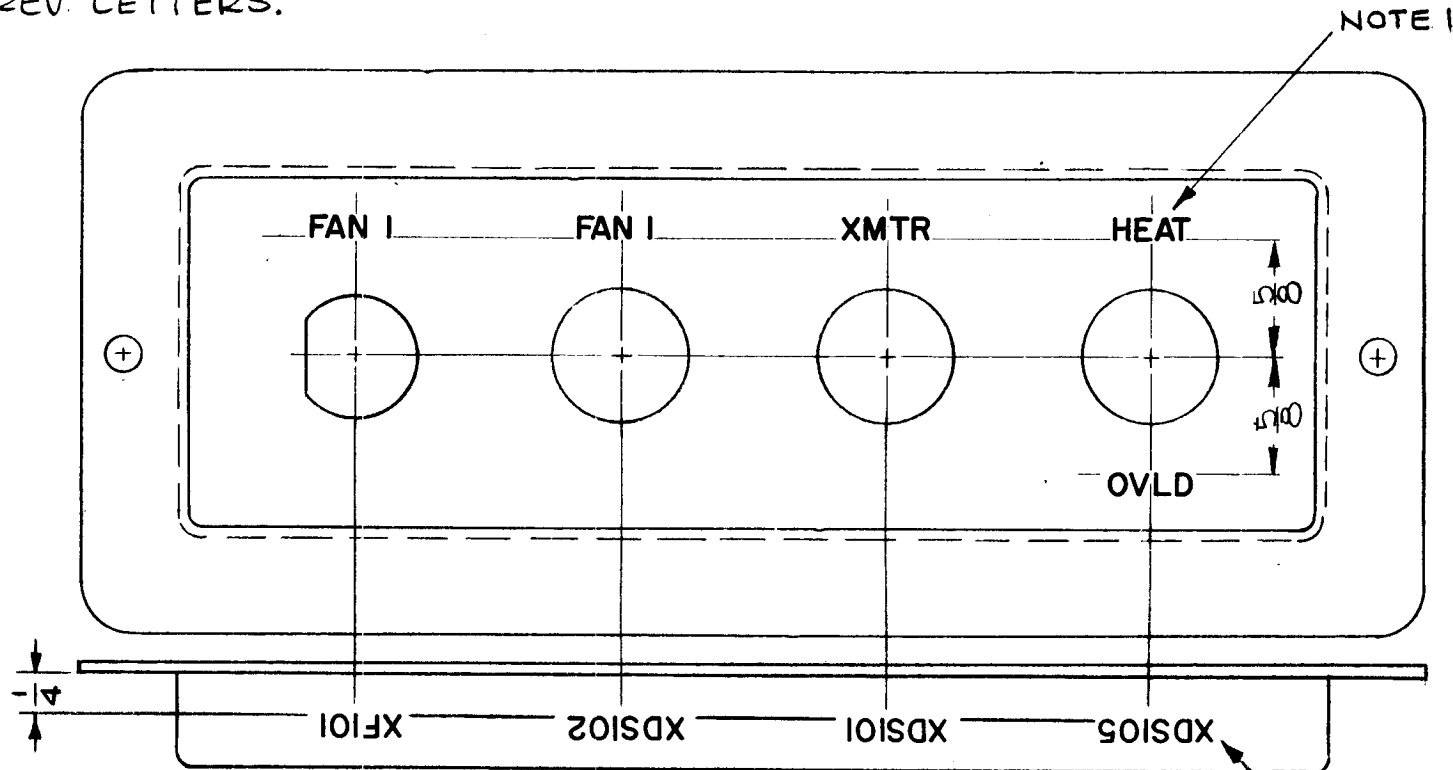
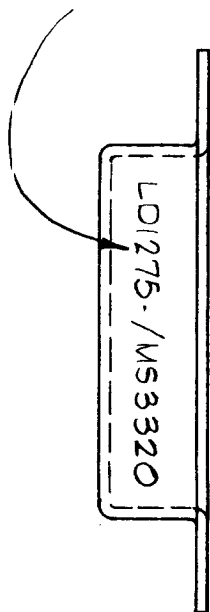
DATE

8-1-63

LD-1275

Ø

MARK TMC DT. NO. 1/8 HIGH BLACK GOTHIC, W/LATEST REV. LETTERS.



MARKING PROCESS: AS PER TMC SPECIFICATION S-727.

NOTE 1 : LETTERING: 1/8 HIGH WHITE GOTHIC, LOCATED AS SHOWN.

NOTE 2 : LETTERING: 1/8 HIGH BLACK GOTHIC, LOCATED AS SHOWN.

REF. MS-3320

							REQ.	ITEM	PART NO.	F. BUDETTI	DESCRIPTION	SYMBOL	
							— # —		THE TECHNICAL MATERIEL CORP. MAMARONECK. NEW YORK				
							STOCK SIZE		MARKING, FUSE MTG PANEL LEFT				
Ø	ORIGINAL RELEASE FOR PRODUCTION	1.11.64	X	JTB			— # —						
SYM	DESCRIPTION	DATE	CH. NO.	DRAFTS	CHECKER	ENG. APP.	MATERIAL						
UNLESS OTHERWISE SPECIFIED DIMENSIONS ARE IN INCHES AND INCLUDE CHEMICALLY APPLIED OR PLATED FINISHES		SCALE	1:1				— + —		<i>R. Chinn</i> 8-1-63 DRAWN <i>JTB</i> CHECKED <i>[Signature]</i> FINAL APPROVAL				
DECIMALS .X ± .05 .XX ± .01 .XXX ± .005	TOLERANCES	FRACTIONS ± 1/64 ANGLES ± 0° 30'	CODE A			— # —		FINISH & SPEC. NO.		ELEC. DES. APP. MECH. DES. APP.		LD-1275	Ø

THE CONTENTS OF THIS DRAWING ARE THE EXCLUSIVE PROPERTY OF THE TECHNICAL MATERIEL CORP. ITS UNAUTHORIZED USE FOR REPRODUCTION IN WHOLE OR IN PART IS STRICTLY FORBIDDEN.

REQ. PER UNIT

1

MODEL

TER-25K-600B

USED ON

ASS'Y. NO.

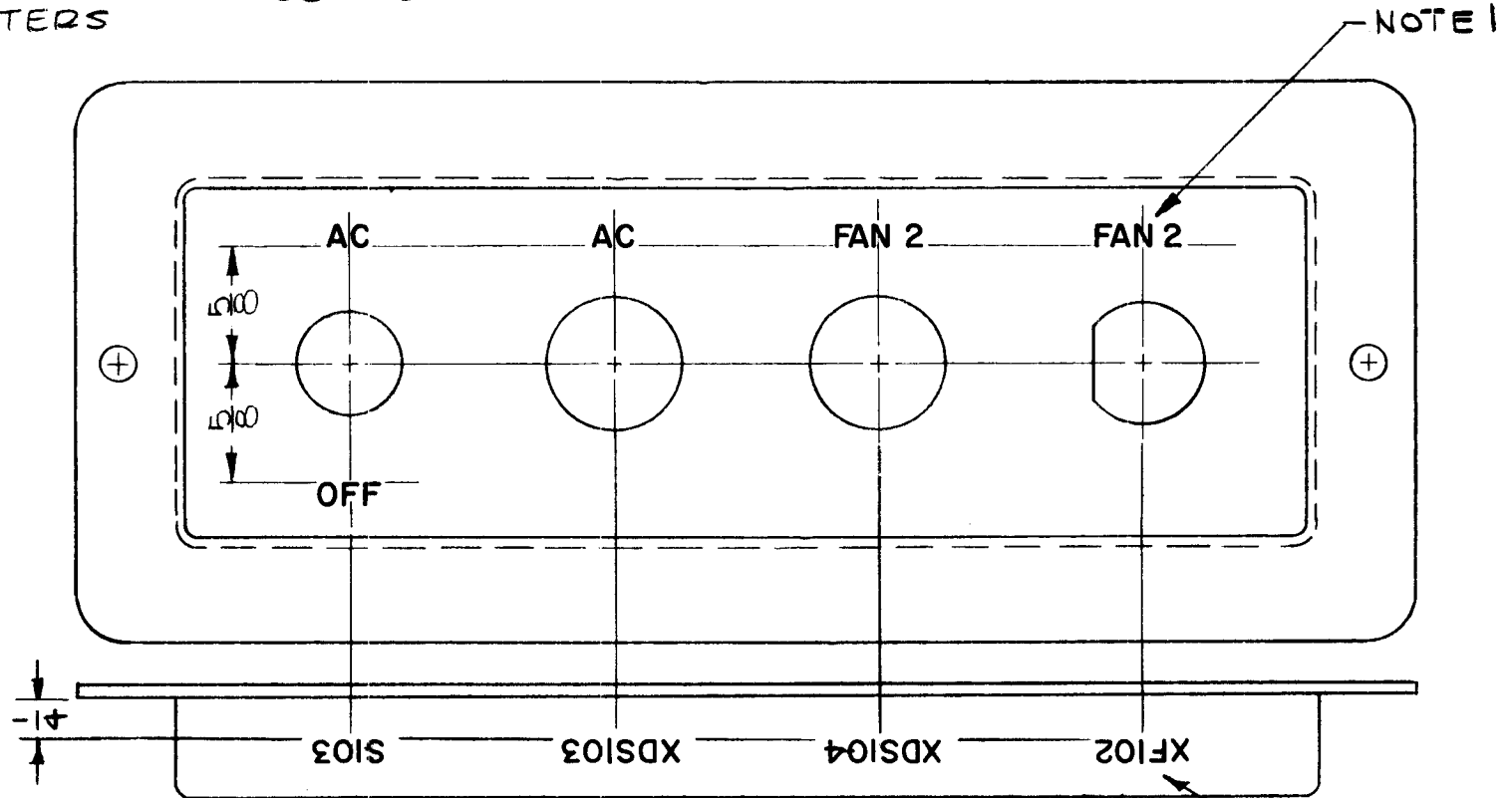
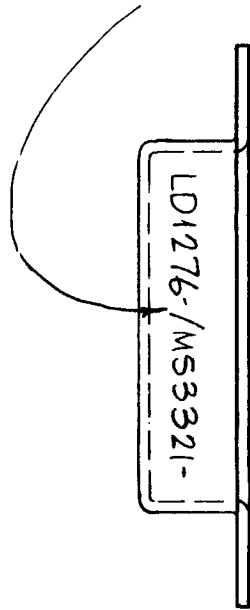
DATE

8-1-63

LD-1276

Ø

MARK TMC PART. NO. 1/8 HIGH BLACK GOTHIC W/LATEST REV. LETTERS



NOTE 1: 1/8 HIGH WHITE GOTHIC  
NOTE 2: 1/8 HIGH BLACK GOTHIC

MARKING PROCESS: TMC S727

REF: MS-3321

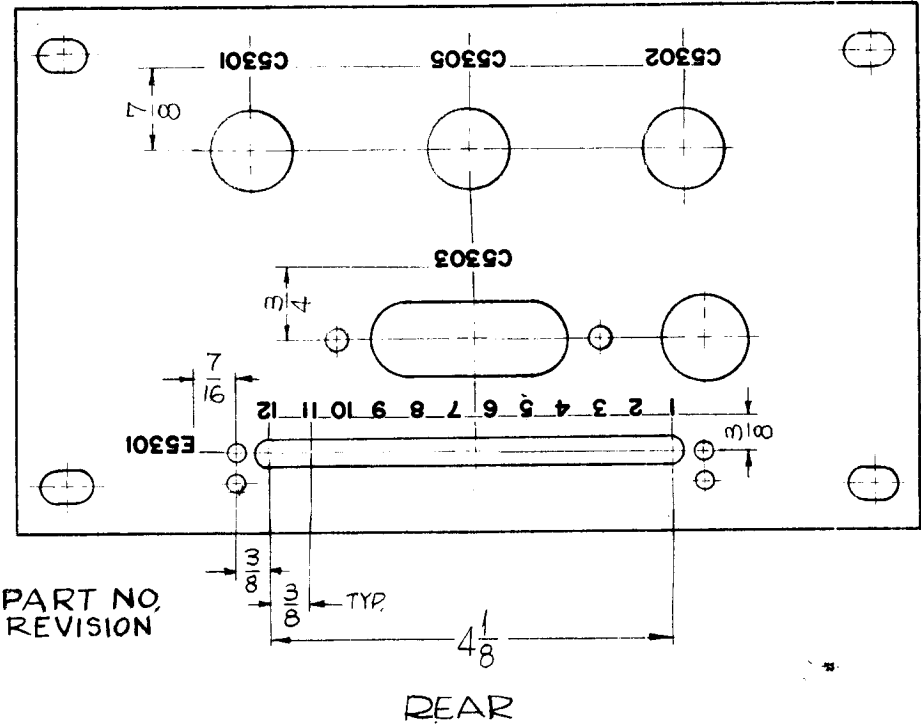
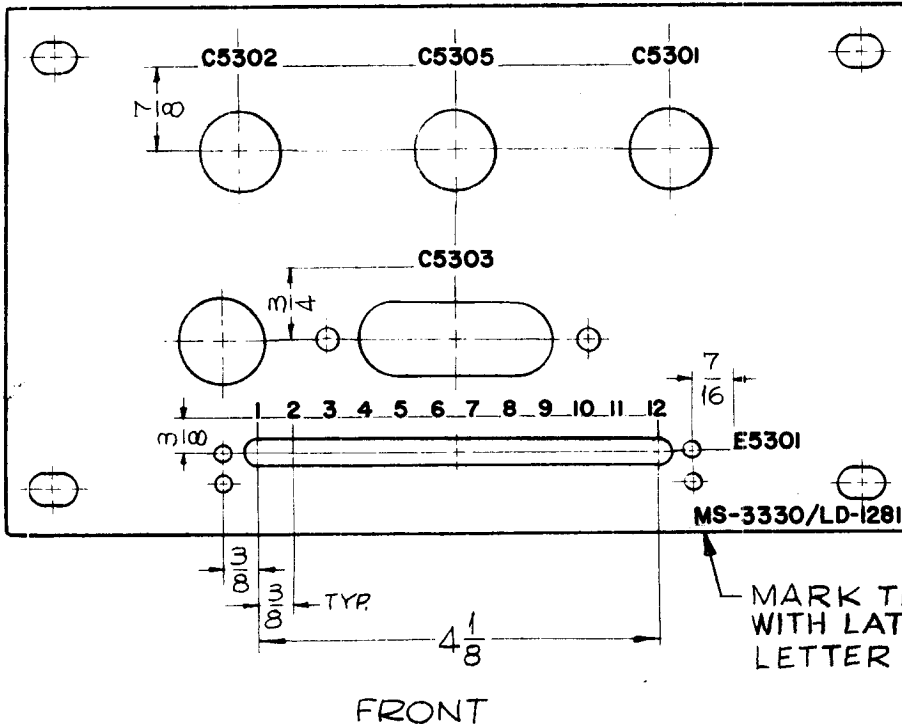
							REQ. ITEM	PART NO.	F. BUDETTI	DESCRIPTION	SYMBOL	
							STOCK SIZE		THE TECHNICAL MATERIEL CORP. MAMARONECK, NEW YORK			
							MATERIAL		MARKING, FUSE MTG PANEL RIGHT			
Ø	ORIGINAL RELEASE FOR PRODUCTION	1.11.65	X	JSB			TYPE & TEMPER		HEAT TREAT. SPEC.	DRAWN	CHECKED	FINAL APPROVAL
SYM	DESCRIPTION	DATE	CH. NO.	DRAFTS	CHECKER	ENG. APP.	FINISH & SPEC. NO.		ELEC. DES. APP.	MECH. DES. APP.	LD-1276	Ø
UNLESS OTHERWISE SPECIFIED DIMENSIONS ARE IN INCHES AND INCLUDE CHEMICALLY APPLIED OR PLATED FINISHES		SCALE	1:1									
DECIMALS	TOLERANCES	FRACTIONS	CODE									
X ± .05		± 1/64	A									
XX ± .01		ANGLES										
.XXX ± .005		± 0° 30'										



MARKING PROCESS: AS PER TMC SPECIFICATION S-727.

LETTERING: 1/8 HIGH BLACK GOTHIC, LOCATED AS SHOWN.

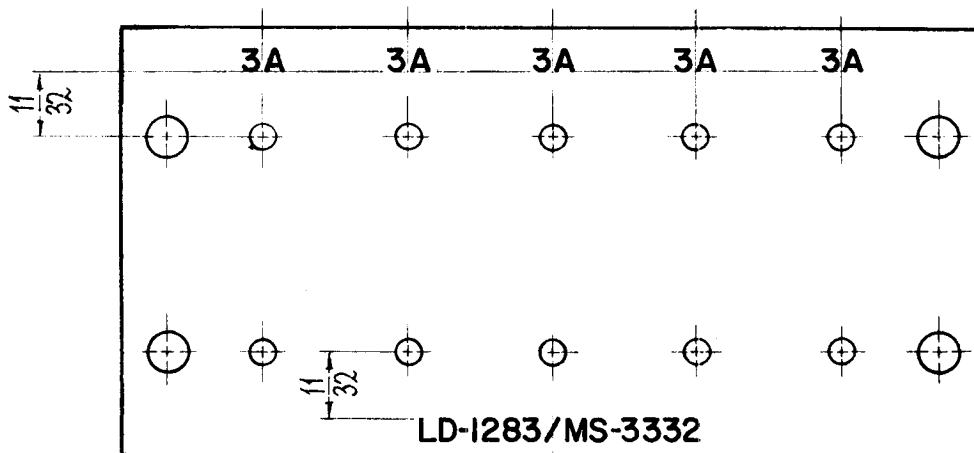
REQ. PER UNIT	USED ON			LD-1281   A
	MODEL	ASS'Y. NO.	DATE	
1	GPT-200K	AX-395	8-23-63	



REF: MS-3330

REQ.	ITEM	PART NO.	F. BUDETTI			DESCRIPTION	SYMBOL						
A	CLERICAL CHANGE	9.3.64	+	WB	7/16	THE TECHNICAL MATERIEL CORP. MAMARONECK, NEW YORK	MARKING, PLATE CAP. MTG. MARKING PROCESS: AS PER TMC SPEC. S-727						
O	ORIGINAL RELEASE FOR PRODUCTION	5-27-64	O	A.M.									
SYM	DESCRIPTION	DATE	CH. NO.	DRAFTS	CHECKER	ENG. APP.	MATERIAL						
UNLESS OTHERWISE SPECIFIED DIMENSIONS ARE IN INCHES AND INCLUDE CHEMICALLY APPLIED OR PLATED FINISHES		SCALE	1/2					SRG	AA	RAC			
DECIMALS .X ± .05 .XX ± .01 .XXX ± .005	TOLERANCES	FRACTIONS ± 1/64 ANGLES ± 0° 30'	CODE	A					TYPE & TEMPER	HEAT TREAT. SPEC.	DRAWN	CHECKED	FINAL APPROVAL
									FINISH & SPEC. NO.	ELEC. DES. APP.		MECH. DES. APP.	LD-1281   A

REQ. PER UNIT	USED ON			LD-1283	O
	MODEL	ASS'Y. NO.	DATE		
1	GPT-200K	AX-393	8-28-63		



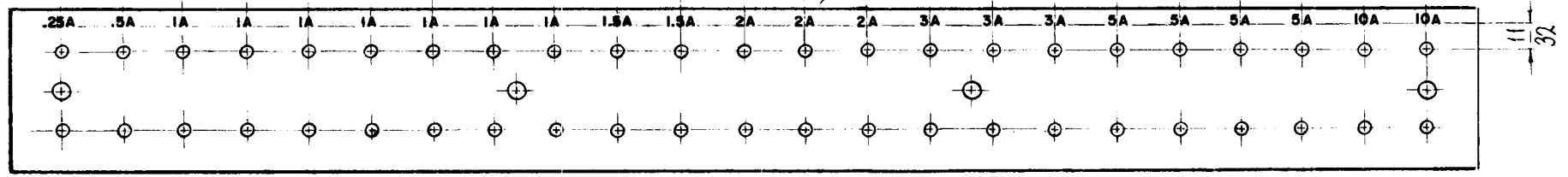
MARKING PROCESS: AS PER TMC SPECIFICATION S-727.

LETTERING: 1/8 HIGH WHITE GOTHIC, LOCATED AS SHOWN.

							REQ. ITEM	PART NO.	F. BUDETTI	DESCRIPTION	SYMBOL	
										THE TECHNICAL MATERIEL CORP. MAMARONECK, NEW YORK		
										MARKING, PLATE, FUSE MTG. SMALL		
O	RELEASED FOR PROD.	22864	*	AM.								
SYM	DESCRIPTION	DATE	CH. NO.	DRAFTS	CHECKER	ENG. APP.	MATERIAL					
UNLESS OTHERWISE SPECIFIED DIMENSIONS ARE IN INCHES AND INCLUDE CHEMICALLY APPLIED OR PLATED FINISHES		SCALE		1" = 1"					John C Biele			
							TYPE & TEMPER	HEAT TREAT. SPEC.	DRAWN	CHECKED	FINAL APPROVAL	
DECIMALS: .X ± .05 .XX ± .01 .XXX ± .005		FRACTIONS ± 1/64 ANGLES ± 0° 30'		CODE A			FINISH & SPEC. NO.				LD-1283	O
TOLERANCES									ELEC. DES. APP.	MECH. DES. APP.		

REQ. PER UNIT	USED ON			LD-1284 0
	MODEL	ASS'Y. NO.	DATE	
1	GPT-200K	AX-393	8-29-63	

MARK TMC PART NO. LD-1284-0/MS-3333-0 ON REAR.



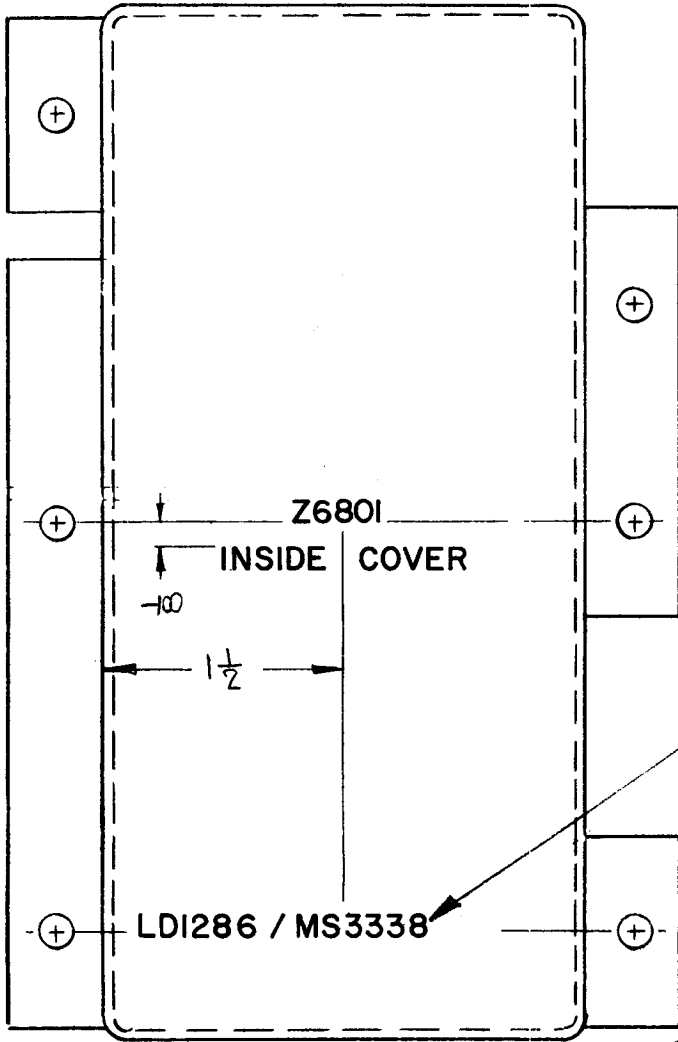
FRONT VIEW SHOWN

**MARKING PROCESS: AS PER TMC SPECIFICATION S-727.**

**LETTERING: 1/8 HIGH WHITE GOTHIC, LOCATED AS SHOWN.**

							REQ. ITEM	PART NO.	F. BUDETTI	DESCRIPTION	SYMBOL
										THE TECHNICAL MATERIEL CORP. MAMARONECK. NEW YORK	
										MARKING, PANEL, FUSE MTG. LARGE	
0	ORIGINAL RELEASE FOR PRODUCTION	3-2-64		A.M							
SYM	DESCRIPTION	DATE	CH. NO.	DRAFTS	CHECKER	ENG. APP.	MATERIAL				
UNLESS OTHERWISE SPECIFIED DIMENSIONS ARE IN INCHES AND INCLUDE CHEMICALLY APPLIED OR PLATED FINISHES		SCALE		1/2" = 1"					John C Biele	gcb	RE
DECIMALS: .X ± .05 .XX ± .01 .XXX ± .005		FRACTIONS ± 1/64 ANGLES ± 0° 30'		CODE		A	TYPE & TEMPER	HEAT TREAT. SPEC.	DRAWN	CHECKED	FINAL APPROVAL
TOLERANCES									DBP	me 2/25/64	LD-1284 0
							FINISH & SPEC. NO.		ELEC. DES. APP.	MECH. DES. APP.	

REQ. PER UNIT	USED ON			LD-12860
	MODEL	ASS'Y. NO.	DATE	
1	GPT-200K (AT-105)	A-2765	B-30-63	



MARK TMC PART NO. W/LATEST REVISIONS.

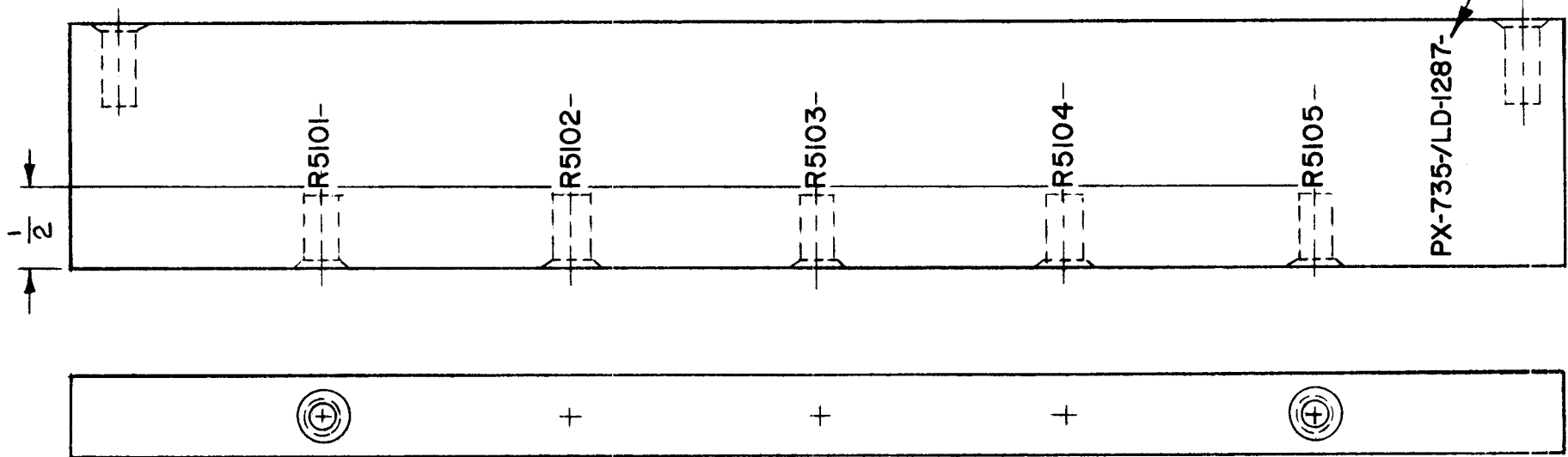
MARKING PROCESS: AS PER TMC SPECIFICATION 8-727.  
 LETTERING: 1/8 HIGH BLACK GOTHIC, LOCATED AS SHOWN.

REF: MS 3338

REQ. ITEM	PART NO.	F. BUDETTI DESCRIPTION		SYMBOL
		THE TECHNICAL MATERIEL CORP. MAMARONECK, NEW YORK		
0	ORIGINAL RELEASE FOR PRODUCTION	5-13-64	0	A.M.
X1	J6801 ADDED	1-15-64		
SYM	DESCRIPTION	DATE	CH. NO.	DRAFTS CHECKER ENG. APP.
UNLESS OTHERWISE SPECIFIED DIMENSIONS ARE IN INCHES AND INCLUDE CHEMICALLY APPLIED OR PLATED FINISHES		SCALE 1"=1"		
DECIMALS .X ± .05 .XX ± .01 .XXX ± .005	TOLERANCES	FRACTIONS ± 1/64 ANGLES ± 0° 30'	CODE A	
TYPE & TEMPER		HEAT TREAT. SPEC.	DRAWN	CHECKED
FINISH & SPEC. NO.		ELEC. DES. APP.	MECH. DES. APP.	FINAL APPROVAL
				LD-12860

REQ. PER UNIT	USED ON			LD-1287 A
	MODEL	ASS'Y. NO.	DATE	
1	GDT-200K	AX-394	8-31-63	

MARK TMC P/N WITH LATEST REV. LETTER



MARKING PROCESS: AS PER TMC SPECIFICATION S-727.  
 LETTERING: 1/8 HIGH WHITE GOTHIC, LOCATED AS SHOWN.

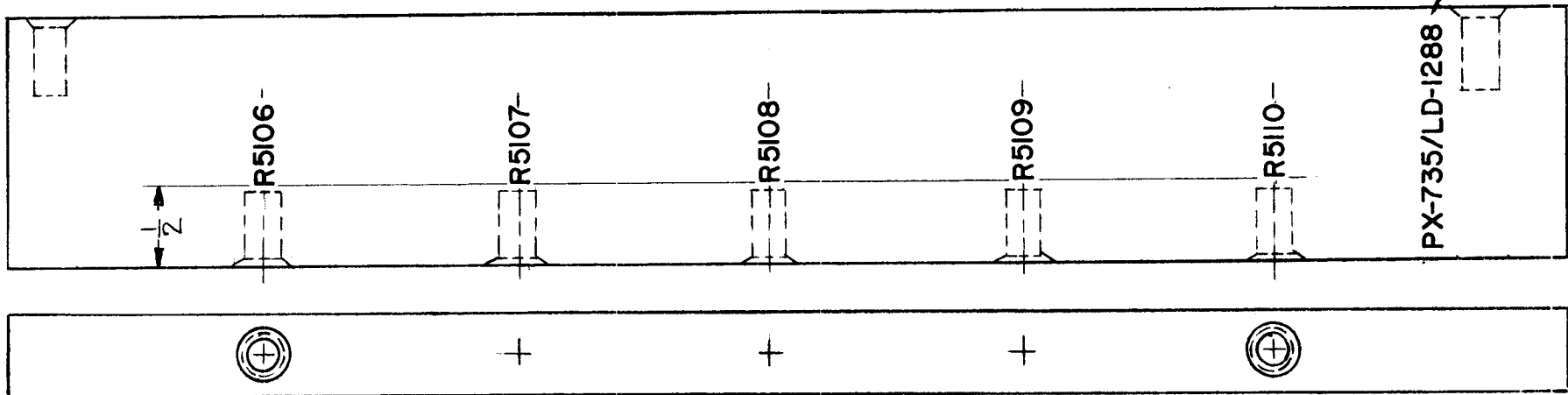
REF: PX-735

							REQ. ITEM	PART NO.	F. BUDETTI	DESCRIPTION	SYMBOL
									THE TECHNICAL MATERIEL CORP. MAMARONECK, NEW YORK		
A	LETT. RELOC. TO REAR	8.17.64	12140	WB	@			STOCK SIZE	MARKING, BOARD, SUPPORT, RESISTOR		
O	ORIGINAL RELEASE FOR PRODUCTION	5/26/64	O	A.M.				MATERIAL	R Chernath 8-31-63		
SYM	DESCRIPTION	DATE	CH. NO.	DRAFTS	CHECKER	ENG. APP.			DRAWN	CHECKED	FINAL APPROVAL
UNLESS OTHERWISE SPECIFIED DIMENSIONS ARE IN INCHES AND INCLUDE CHEMICALLY APPLIED OR PLATED FINISHES						SCALE					
DECIMALS	FRACTIONS	CODE									
.X ± .05	± 1/64	A									
.XX ± .01	ANGLES										
.XXX ± .005	± 0° 30'										
TOLERANCES								FINISH & SPEC. NO.	ELEC. DES. APP.	MECH. DES. APP.	LD-1287 A



REQ. PER UNIT	USED ON			LD-1288 A
	MODEL	ASS'Y. NO.	DATE	
1	GPT-200K	AX-394	8-31-63	

MARK TMC P/N WITH LATEST REV. LETTER

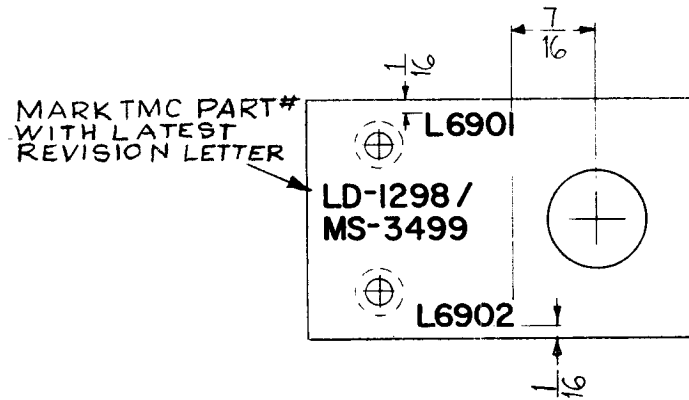


**MARKING PROCESS: AS PER TMC SPECIFICATION S-727.**  
**LETTERING: 1/8 HIGH WHITE GOTHIC, LOCATED AS SHOWN.**

REF: PX-735

							REQ. ITEM	PART NO.	F. BUDETTI	DESCRIPTION	SYMBOL	
									THE TECHNICAL MATERIEL CORP. MAMARONECK. NEW YORK			
A	LETT. RELOC. TO REAR	8.17.64	12140	WB	@		STOCK SIZE			MARKING, BOARD, SUPPORT, RESISTOR		
O	ORIGINAL RELEASE FOR PRODUCTION	5/26/64	O	A.M.			MATERIAL					
SYM	DESCRIPTION	DATE	CH. NO.	DRAFTS	CHECKER	ENG. APP.	TYPE & TEMPER			HEAT TREAT. SPEC.		
UNLESS OTHERWISE SPECIFIED DIMENSIONS ARE IN INCHES AND INCLUDE CHEMICALLY APPLIED OR PLATED FINISHES		SCALE					DRAWN		CHECKED		FINAL APPROVAL	
DECIMALS .X ± .05 .XX ± .01 .XXX ± .005	TOLERANCES	FRACTIONS ± 1/64 ANGLES ± 0° 30'	CODE A				ELEC. DES. APP.		MECH. DES. APP.		LD-1288 A	
							FINISH & SPEC. NO.					

REQ. PER UNIT	USED ON			LD-1298	O
	MODEL	ASS'Y. NO.	DATE		
	GPT-200K	AX-397	9-14-63		



MARKING PROCESS: AS PER TMC SPECIFICATION S-727.

LETTERING: 1/8 HIGH BLACK GOTHIC, LOCATED AS SHOWN.

REF: MS 3499

							REQ. ITEM	PART NO.	F. BUDETTI	DESCRIPTION	SYMBOL	
									THE TECHNICAL MATERIEL CORP. MAMARONECK. NEW YORK			
								STOCK SIZE	MARKING, PLATE, RF FILTER MOUNTING			
O	ORIGINAL RELEASE FOR PRODUCTION	5-27-64	O	A.M.								
SYM	DESCRIPTION	DATE	CH. NO.	DRAFTS	CHECKER	ENG. APP.	MATERIAL					
UNLESS OTHERWISE SPECIFIED DIMENSIONS ARE IN INCHES AND INCLUDE CHEMICALLY APPLIED OR PLATED FINISHES		SCALE	*						W.A. FRANCO	all	KAC	
							TYPE & TEMPER	HEAT TREAT. SPEC.	DRAWN	CHECKED	FINAL APPROVAL	
DECIMALS .X ± .05 .XX ± .01 .XXX ± .005	TOLERANCES	FRACTIONS ± 1/64 ANGLES ± 0° 30'	CODE A						903	KAC 9/20/64	LD-1298	O
							FINISH & SPEC. NO.		ELEC. DES. APP.	MECH. DES. APP.		