

THE CONTENTS OF THIS DRAWING ARE THE EXCLUSIVE PROPERTY OF THE TECHNICAL MATERIEL CORP. ITS UNAUTHORIZED USE FOR REPRODUCTION IN WHOLE OR IN PART IS STRICTLY FORBIDDEN.

REQ. PER UNIT

1

MODEL

TER-25K-600B

USED ON

ASS'Y. NO.

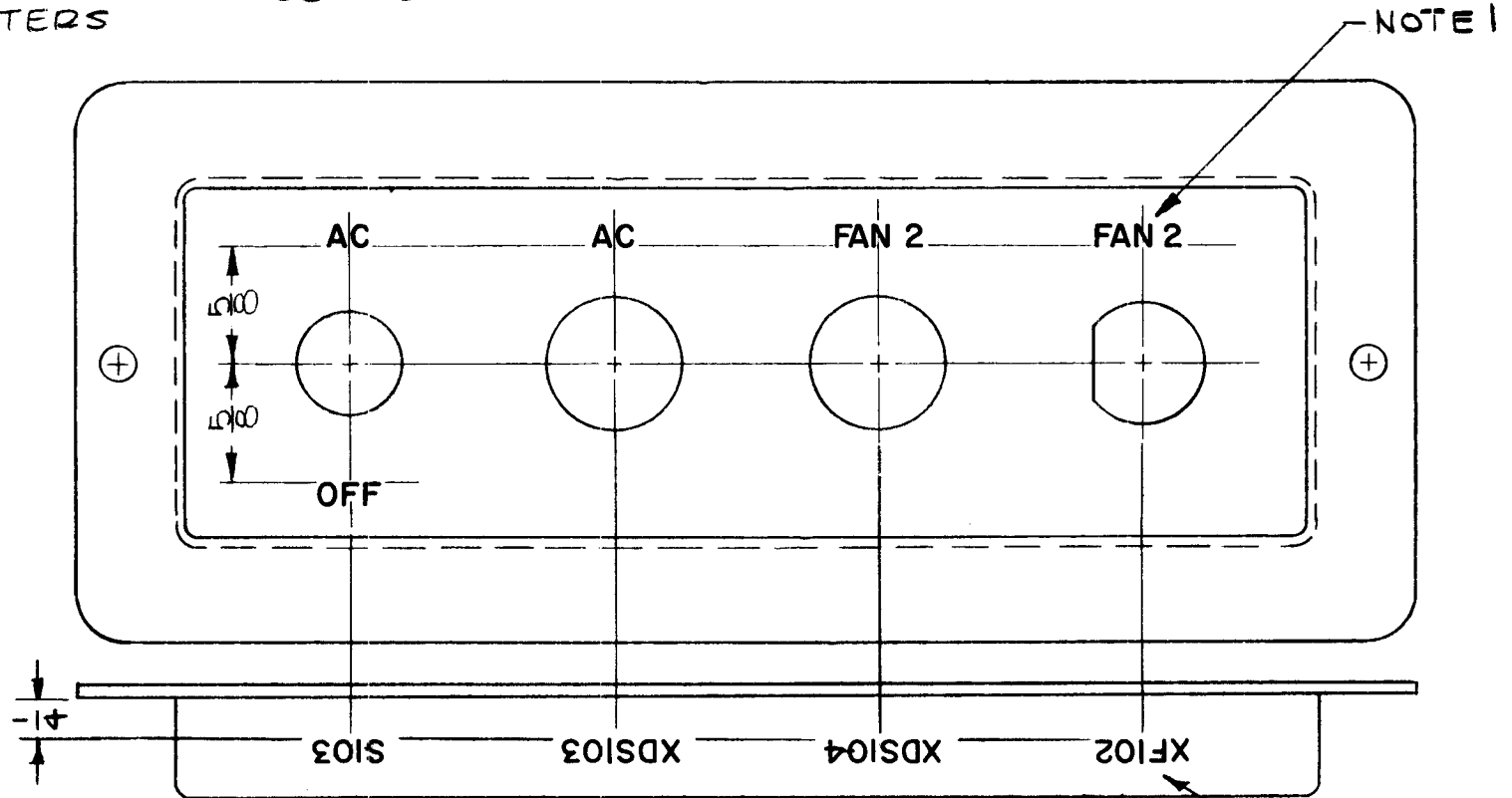
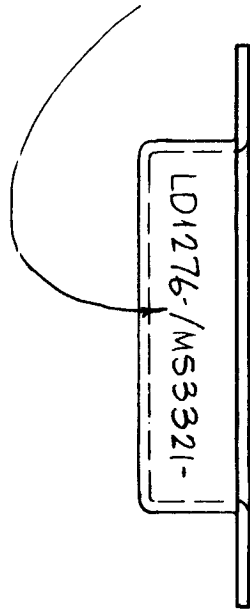
DATE

8-1-63

LD-1276

Ø

MARK TMC PART. NO. 1/8 HIGH BLACK GOTHIC W/LATEST REV. LETTERS



NOTE 1: 1/8 HIGH WHITE GOTHIC  
NOTE 2: 1/8 HIGH BLACK GOTHIC

MARKING PROCESS: TMC S727

REF: MS-3321

							REQ. ITEM	PART NO.	F. BUDETTI	DESCRIPTION	SYMBOL	
							STOCK SIZE		THE TECHNICAL MATERIEL CORP. MAMARONECK. NEW YORK			
							MATERIAL		MARKING, FUSE MTG PANEL RIGHT			
Ø	ORIGINAL RELEASE FOR PRODUCTION	1.11.65	X	JSB			TYPE & TEMPER		DRAWN	CHECKED	FINAL APPROVAL	
SYM	DESCRIPTION	DATE	CH. NO.	DRAFTS	CHECKER	ENG. APP.	HEAT TREAT. SPEC.		LD-1276	Ø		
UNLESS OTHERWISE SPECIFIED DIMENSIONS ARE IN INCHES AND INCLUDE CHEMICALLY APPLIED OR PLATED FINISHES		SCALE	1:1				FINISH & SPEC. NO.		ELEC. DES. APP.	MECH. DES. APP.	LD-1276	Ø
DECIMALS	TOLERANCES	FRACTIONS	CODE									
X ± .05		± 1/64	A									
XX ± .01		ANGLES										
.XXX ± .005		± 0° 30'										