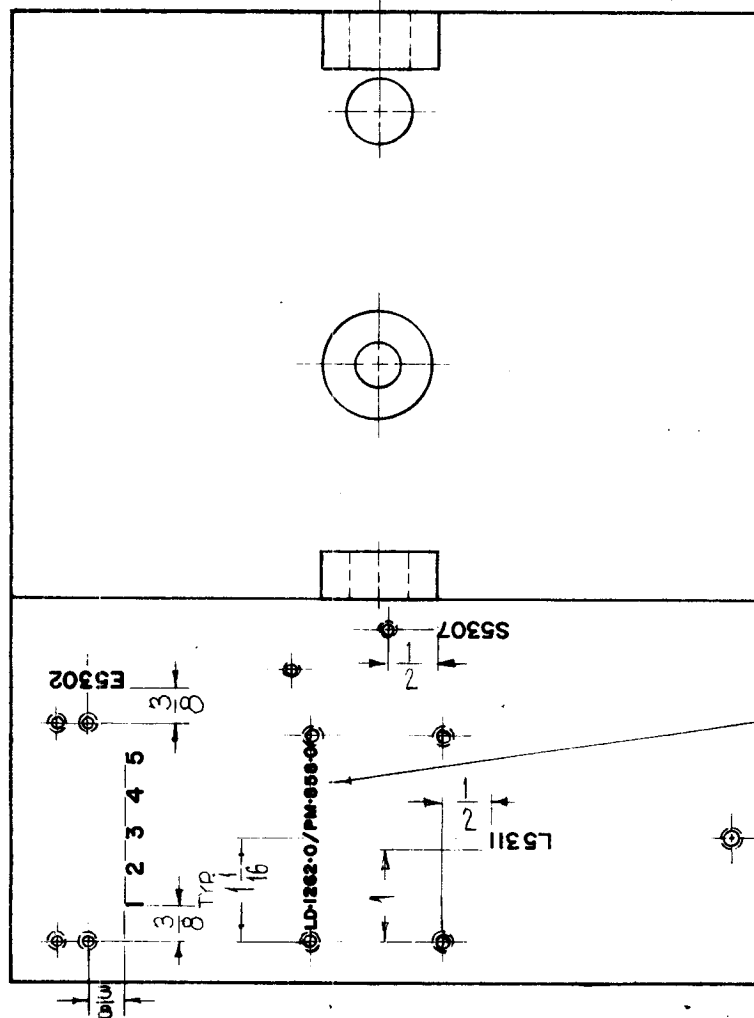
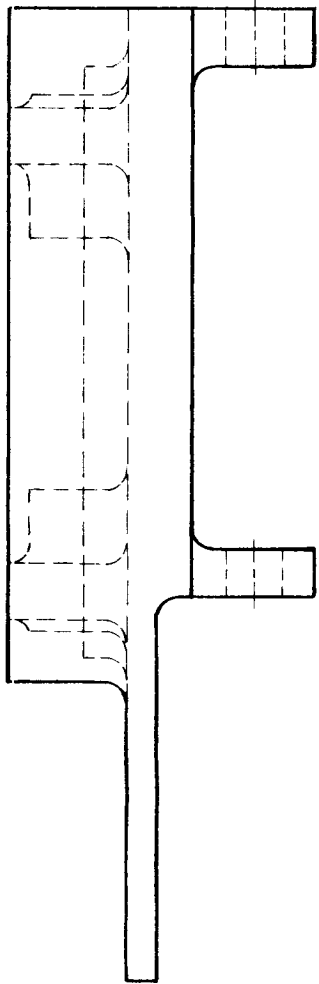


THE CONTENTS OF THIS DRAWING ARE THE EXCLUSIVE PROPERTY OF THE TECHNICAL MATERIEL CORP. ITS UNAUTHORIZED USE FOR REPRODUCTION IN WHOLE OR IN PART IS STRICTLY FORBIDDEN.

REQ. PER UNIT	USED ON		
	MODEL	ASS'Y. NO.	DATE
1	GPT-200K (AS-123)	A-2681	5-28-63

LD-1262 0



MARKING PROCESS- AS PER TMC SPECIFICATION S-727.

LETTERING - 1/8 HIGH GOTHIC, BLACK, LOCATED AS SHOWN.

TMC NO.

REQ.	ITEM	PART NO.	F. BUDETTI	DESCRIPTION	SYMBOL
			THE TECHNICAL MATERIEL CORP. MAMARONECK, NEW YORK		
			MARKING, BANDSWITCH RELEASE		
			MARKING PROCESS: PER TMC SPEC S-727		
○	ORIGINAL RELEASE FOR PRODUCTION	3-6-64			
SYM	DESCRIPTION	DATE	CH. NO.	DRAFTS	CHECKER
UNLESS OTHERWISE SPECIFIED DIMENSIONS ARE IN INCHES AND INCLUDE CHEMICALLY APPLIED OR PLATED FINISHES		SCALE	/		
DECIMALS .X ± .05 .XX ± .01 .XXX ± .005	TOLERANCES	FRACTIONS ± 1/64 ANGLES ± 0° 30'	CODE A		
			TYPE & TEMPER	HEAT TREAT. SPEC.	FINISH & SPEC. NO.
			John C. Biele	AA JCB RJC 4-7-64	LD-1262 0
			DRAWN	CHECKED	FINAL APPROVAL
			ELEC. DES. APP.	MECH. DES. APP.	