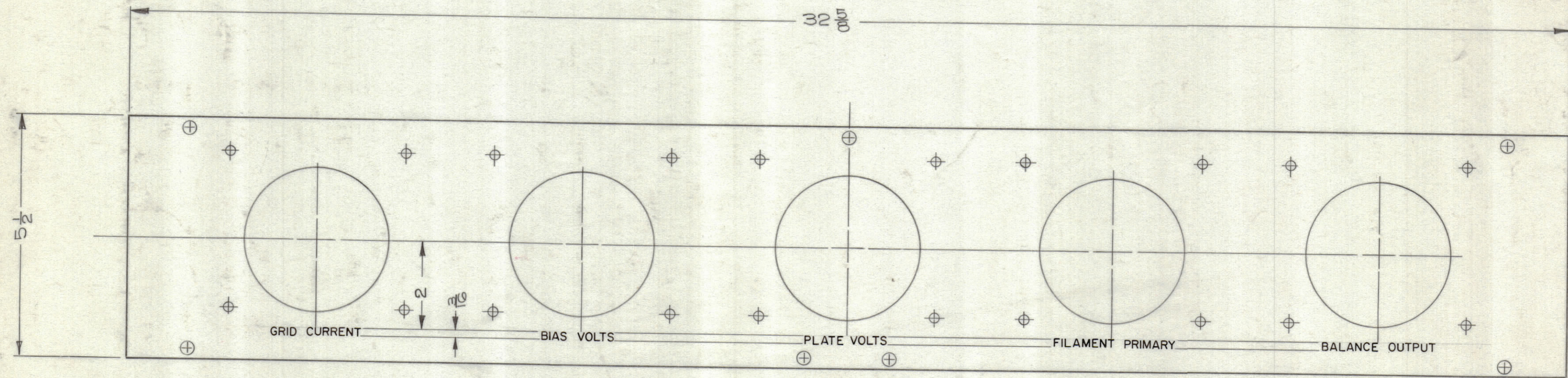


REVISIONS							
ZONE	SYM	DESCRIPTION	DATE	E.M.N. NO.	DRAFT	CHKD	APPD
0		ORIGINAL RELEASE FOR PROD	5/11/64				



FRONT VIEW SHOWN

- UNLESS OTHERWISE SPECIFIED ~
1. ENGRAVING TO BE 3/16 HIGH GOTHIC, WHITE FILLED.
  2. ALL LETTER GROUPS TO BE CENTERED ON HOLES.

HEIGHT OF LETTER	DEPTH OF STROKE	WIDTH OF STROKE
3/16	.010	.025

REF: PX-743

REQ'D.	ITEM	PART NUMBER	DESCRIPTION	SYMBOL
F. BUDETTI				
LIST OF MATERIAL				
MATERIAL			THE TECHNICAL MATERIEL CORP. MAMARONECK, NEW YORK	
FINISH			TITLE ENGRAVING, FRONT, METER PANEL	
UNLESS OTHERWISE SPECIFIED DIMENSIONS ARE IN INCHES AND INCLUDE CHEMICALLY APPLIED OR PLATED FINISHES			DRAWN <i>F. Budetti</i>	DATE 7-17-63
DECIMALS .X ± .05 .XX ± .01 .XXX ± .005			ELECT. DES. <i>BC</i>	DATE 7/16/64
FRACTIONS ± 1/64 ANGLES ± 0° 30'			MECH. DES. <i>BC</i>	DATE 4/6/64
TOLERANCES			LD-1249	0
			SHEET 1 OF 2	REV. LTR.

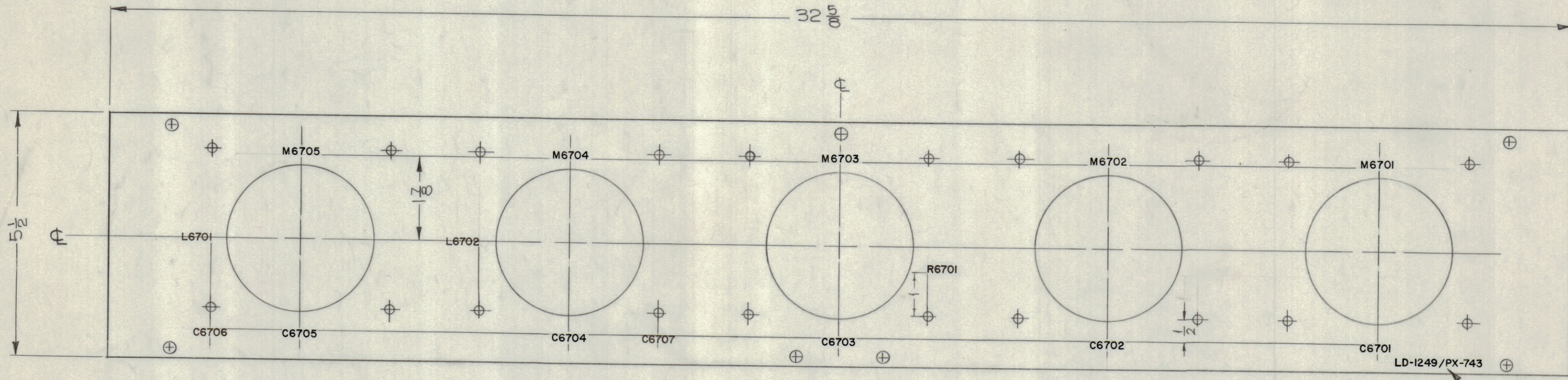
Q'TY./UNIT	MODEL USED ON	ASS'Y. NO.
1	GPT-200K	AM-120
SCALE	CODE	
1:2	A	

NOTES

THE CONTENTS OF THIS DRAWING ARE THE EXCLUSIVE PROPERTY OF THE TECHNICAL MATERIEL CORP. ITS UNAUTHORIZED USE OR REPRODUCTION IN WHOLE OR IN PART IS STRICTLY FORBIDDEN.

LD-1249 0

REVISIONS					
ZONE	SYM	DESCRIPTION	DATE	E.M.N. NO.	APPD
	X1	L6701, L6702, C6706 & C6707 ADDED	12-6-63		
	X2	R6701 RELOCATED FROM BETWEEN M6702 & C6702 TO BETWEEN C6703 AND C6704	12-31-63		
	O	ORIGINAL RELEASE FOR PROD	5/11/64		



REAR VIEW SHOWN

MARK TMC PART NO WITH LATEST REVISION LETTERS

LD-1249 0

MARKING PROCESS: AS PER TMC SPECIFICATION S-727.  
 LETTERING: 1/8 HIGH WHITE GOTHIC, LOCATED AS SHOWN.

NOTES

REF: PX 743

REQ'D.	ITEM	PART NUMBER	DESCRIPTION	SYMBOL
F. BUDETTI LIST OF MATERIAL				
MATERIAL		THE TECHNICAL MATERIEL CORP. MAMARONECK, NEW YORK		
FINISH		TITLE LETTERING, REAR, METER PANEL		
UNLESS OTHERWISE SPECIFIED DIMENSIONS ARE IN INCHES AND INCLUDE CHEMICALLY APPLIED OR PLATED FINISHES		DRAWN <i>F. Budetti</i>	DATE 7-16-63	FINAL APPROVAL <i>R. J. ...</i>
DECIMALS .X ± .05 .XX ± .01 .XXX ± .005		TOLERANCES FRACTIONS ± 1/64 ANGLES ± 0° 30'		ELECT. DES. <i>RB</i>
THE CONTENTS OF THIS DRAWING ARE THE EXCLUSIVE PROPERTY OF THE TECHNICAL MATERIEL CORP. ITS UNAUTHORIZED USE OR REPRODUCTION IN WHOLE OR IN PART IS STRICTLY FORBIDDEN.		MECH. DES. <i>W</i>		DATE 4/15/64
SHEET 2 OF 2				REV. LTR. O

LD-1249  
SHEET 2 OF 2