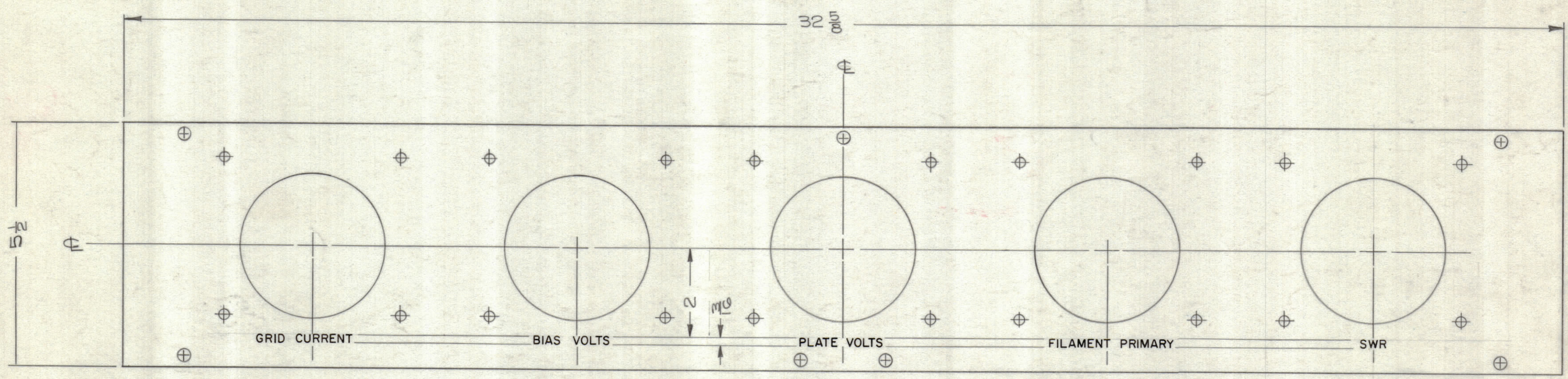


REVISIONS							
ZONE	SYM	DESCRIPTION	DATE	E.M.N. NO.	DRAFT	CHKD	APPD
0		ORIGINAL RELEASE FOR PROD	5/1/69				



FRONT VIEW SHOWN

- UNLESS OTHERWISE SPECIFIED ~
1. ENGRAVING TO BE 3/16 HIGH GOTHIC, WHITE FILLED
 2. ALL LETTER GROUPS TO BE CENTERED ON HOLES.

HEIGHT OF LETTER	DEPTH OF STROKE	WIDTH OF STROKE
3/16	.010	.025

REF: PX-743

REQ'D.	ITEM	PART NUMBER	DESCRIPTION	SYMBOL
	F. BUDETTI		LIST OF MATERIAL	
MATERIAL		THE TECHNICAL MATERIEL CORP. MAMARONECK, NEW YORK		
FINISH		TITLE ENGRAVING, FRONT, METER PANEL		
UNLESS OTHERWISE SPECIFIED DIMENSIONS ARE IN INCHES AND INCLUDE CHEMICALLY APPLIED OR PLATED FINISHES		DRAWN <i>F. Bugetti</i>	DATE 7-16-63	FINAL APPROVAL <i>RJC</i>
DECIMALS .X ± .05 .XX ± .01 .XXX ± .005		TOLERANCES	ELECT. DES. <i>LB</i>	DATE 7/18/64
FRACTIONS ± 1/64 ANGLES ± 0° 30'		MECH. DES. <i>RJC</i>	DATE 7/26/64	DATE
THE CONTENTS OF THIS DRAWING ARE THE EXCLUSIVE PROPERTY OF THE TECHNICAL MATERIEL CORP. ITS UNAUTHORIZED USE OR REPRODUCTION IN WHOLE OR IN PART IS STRICTLY FORBIDDEN.			LD-248	0
NOTES			SHEET 1 OF 2	REV. LTR.

LD-1248 0