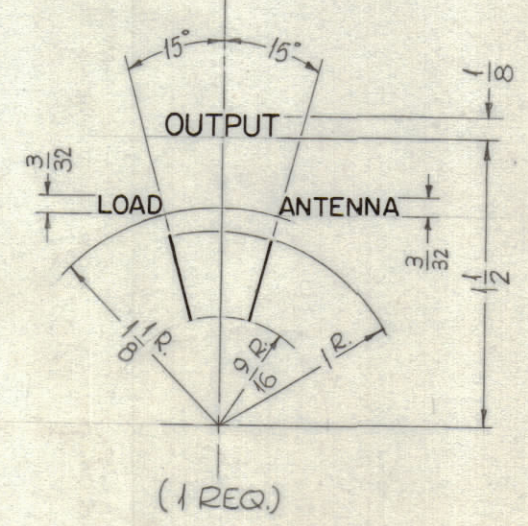
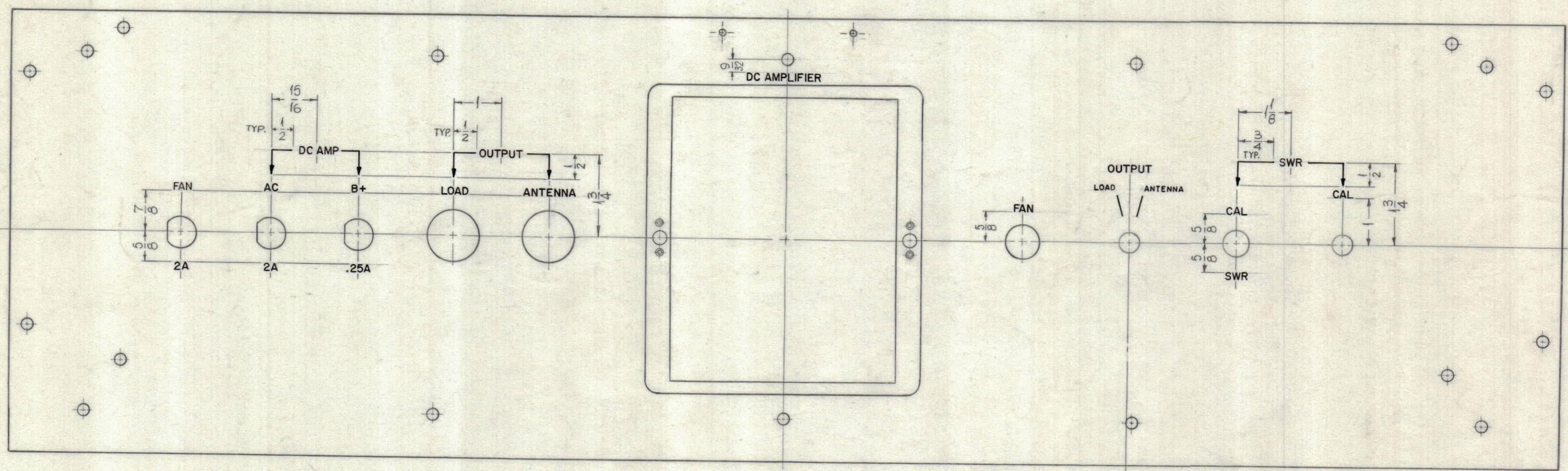
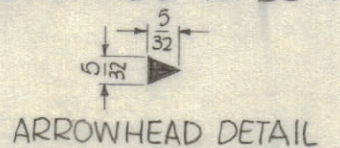


REVISIONS					
ZONE	SYM	DESCRIPTION	DATE	E.M.N. NO.	APPD
O		ORIGINAL RELEASE FOR PRODUCTION	5-28-64	O	A.M.



UNLESS OTHERWISE SPECIFIED:
 1~ ALL LETTERING TO BE 1/8 HIGH GOTHIC WHITE FILLED.
 2~ ALL LINES TO BE WHITE FILLED,
 3~ ALL LETTERING GROUPS TO BE CENTERED ON HOLES,
 OR INDICATING LINES.
 4~ ALL ARROWHEADS TO BE WHITE FILLED. (SEE DETAIL)



LETTER HEIGHT	DEPTH OF STROKE	WIDTH OF STROKE
3/32	.010	.015
1/8	.010	.020
LINES	.010	.015
ARROWHEADS	.010	

NOTES

THE CONTENTS OF THIS DRAWING ARE THE EXCLUSIVE PROPERTY OF THE TECHNICAL MATERIEL CORP. ITS UNAUTHORIZED USE OR REPRODUCTION IN WHOLE OR IN PART IS STRICTLY FORBIDDEN.

REF: TMC DWG MS-3192

REQ'D.	ITEM	PART NUMBER	DESCRIPTION	SYMBOL
F. BUDETTI LIST OF MATERIAL				
THE TECHNICAL MATERIEL CORP. MAMARONECK, NEW YORK				
TITLE ENGRAVING, PANEL FRONT, PS "A"				
DRAWN SRG		DATE 7-17-63		FINAL APPROVAL
CHECKED		DATE		
ELECT. DES.		DATE		
MECH. DES.		DATE		
UNLESS OTHERWISE SPECIFIED DIMENSIONS ARE IN INCHES AND INCLUDE CHEMICALLY APPLIED OR PLATED FINISHES				
SCALE 1/2		CODE		
Q'TY./UNIT		MODEL USED ON		ASS'Y. NO.
1		GPT-200K		AX-397
DECIMALS .X ± .05 .XX ± .01 .XXX ± .005		TOLERANCES		FRACTIONS ± 1/64 ANGLES ± 0° 30'
SHEET 1 OF 2				REV. LTR.

LD-1218

LD-1218

SHEET 1 OF 2

7

6

5

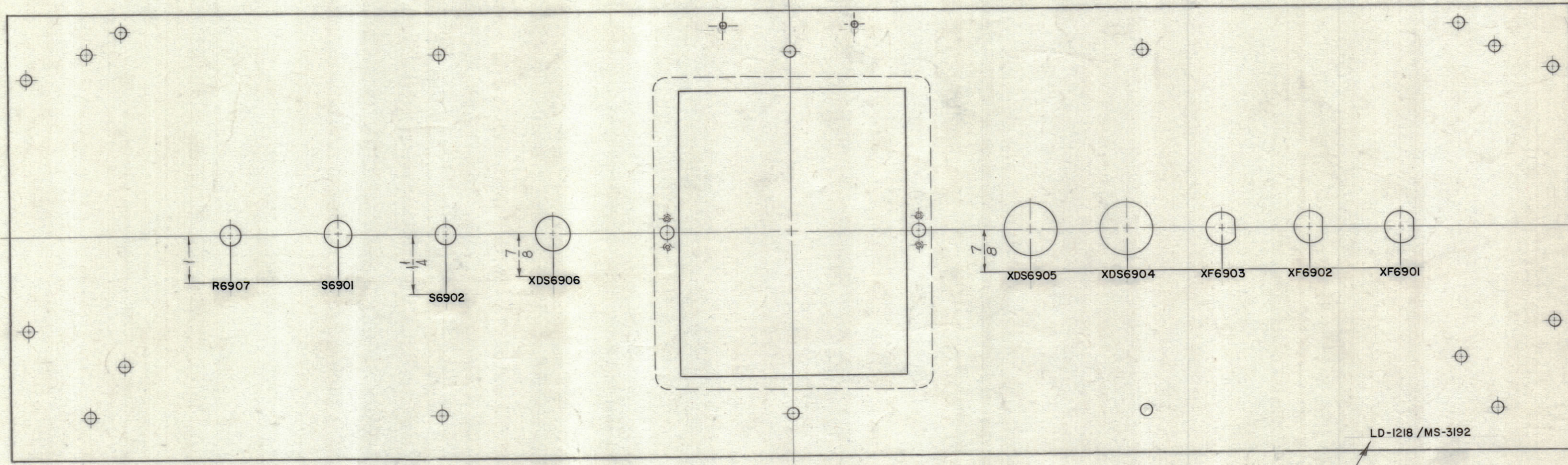
4

3

2

1

REVISIONS							
ZONE	SYM	DESCRIPTION	DATE	E.M.N. NO.	DRAFT	CHKD	APPD
	0	ORIGINAL RELEASE FOR PRODUCTION	5/28/64	0	A.M.		



*ok
ax*

REAR VIEW SHOWN DOWN

MARK TMC PART NO. WITH LATEST REVISION LETTER.

LD-1218 / MS-3192

LD-1218
0

MARKING PROCESS: AS PER TMC SPECIFICATION S-727.
LETTERING: 1/8 HIGH BLACK GOTHIC, LOCATED AS SHOWN.

REF. TMC DWG MS-3192

REQ'D.	ITEM	PART NUMBER	DESCRIPTION	SYMBOL
F. BUDETTI				
LIST OF MATERIAL				
MATERIAL			THE TECHNICAL MATERIEL CORP. MAMARONECK, NEW YORK	
FINISH			TITLE LETTERING, FRONT PANEL, REAR	
DRAWN		SRG	DATE	7-17-63
CHECKED		aa	DATE	
ELECT. DES.		COB	DATE	
MECH. DES.		AKC	DATE	5/17/64
UNLESS OTHERWISE SPECIFIED DIMENSIONS ARE IN INCHES AND INCLUDE CHEMICALLY APPLIED OR PLATED FINISHES			FINAL APPROVAL LD-1218	
DECIMALS .X ± .05 .XX ± .01 .XXX ± .005			TOLERANCES ± 1/64 ANGLES ± 0° 30'	
THE CONTENTS OF THIS DRAWING ARE THE EXCLUSIVE PROPERTY OF THE TECHNICAL MATERIEL CORP. ITS UNAUTHORIZED USE OR REPRODUCTION IN WHOLE OR IN PART IS STRICTLY FORBIDDEN.			SHEET 2 OF 2	
NOTES			REV. LTR.	

7

6

5

4

3

2

1