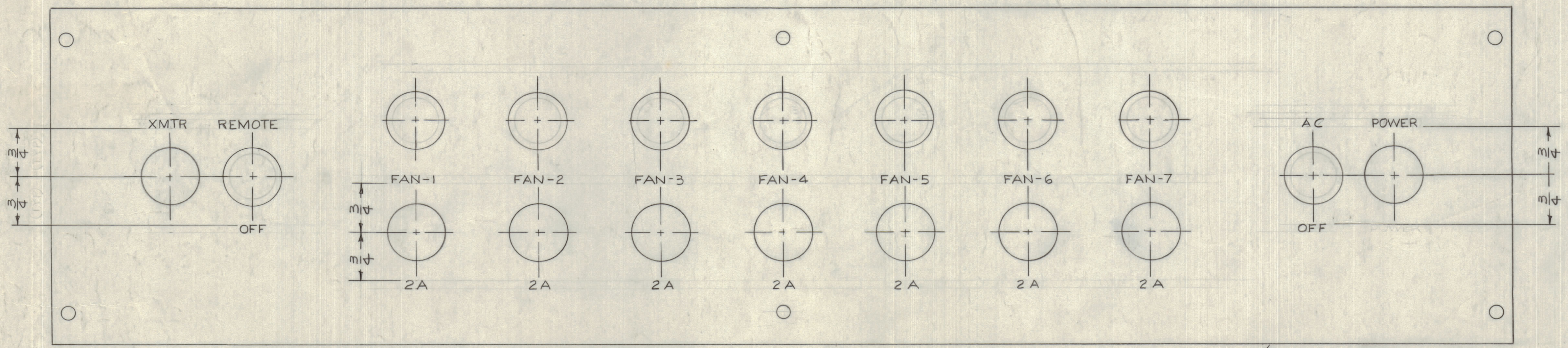


| REVISIONS | | | | | | | |
|-----------|-----|---------------------------------|---------|------------|-------|------|------|
| ZONE | SYM | DESCRIPTION | DATE | E.M.N. NO. | DRAFT | CHKD | APPD |
| Ø | | ORIGINAL RELEASE FOR PRODUCTION | 6/11/65 | | JC | | |



FRONT VIEW SHOWN

MARK TMC PT. NO. (LD1208- / MS3138-) 1/8 HIGH BLACK GOTHIC W/LATEST REVISION LETTERS AS PER TMC SPEC. S727.

NOTE:
UNLESS OTHERWISE SPECIFIED ALL ENGRAVING TO BE 1/8 HIGH GOTHIC, WHITE FILLED, AS PER TMC SPEC. S566.

| LETTER HEIGHT | DEPTH OF STROKE | WIDTH OF STROKE |
|---------------|-----------------|-----------------|
| 1/8 | .010 | .020 |

LD-1208 Ø

REF: MS 3138

| REQ'D. | ITEM | PART NUMBER | DESCRIPTION | SYMBOL |
|---|------|--|-------------|----------------|
| BUDETTI LIST OF MATERIAL | | | | |
| MATERIAL | | THE TECHNICAL MATERIEL CORP. MAMARONECK, NEW YORK | | |
| FINISH | | TITLE PANEL, ENGRAVING | | |
| QTY./UNIT | | MODEL USED ON | | ASSY. NO. |
| SCALE | | CODE | | |
| UNLESS OTHERWISE SPECIFIED DIMENSIONS ARE IN INCHES AND INCLUDE CHEMICALLY APPLIED OR PLATED FINISHES | | | | |
| DRAWN | | DATE | | FINAL APPROVAL |
| CHECKED | | DATE | | |
| ELECT. DES. | | DATE | | |
| MECH. DES. | | DATE | | |
| DECIMALS | | FRACTIONS | | |
| .XX ± .05 | | 1/64 | | |
| .XXX ± .01 | | ANGLES | | |
| .XXX ± .005 | | ± 0° 30' | | |
| DATE | | DATE | | |
| SHEET | | SHEET | | |

NOTES

THE CONTENTS OF THIS DRAWING ARE THE EXCLUSIVE PROPERTY OF THE TECHNICAL MATERIEL CORP. ITS UNAUTHORIZED USE OR REPRODUCTION IN WHOLE OR IN PART IS STRICTLY FORBIDDEN.

LD-1208