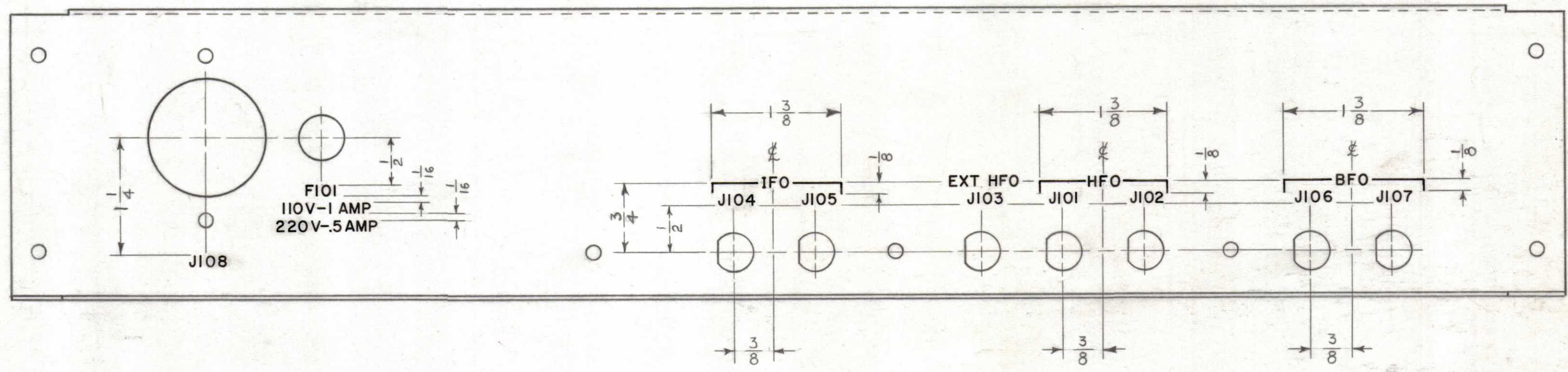


REVISIONS							
ZONE	SYM	DESCRIPTION	DATE	E.M.N. NO.	DRAFT	CHKD	APPD



- NOTES:**
 -UNLESS OTHERWISE SPECIFIED-
 1. MARKING PROCESS: AS PER TMC SPECIFICATION S-727.
 2. LETTERING: BLACK LUSTERLESS GOTHIC.
 3. ALL LETTER GROUPS TO BE CENTERED ON HOLES OR INDICATING LINES.

LEGEND	
HEIGHT OF LETTERS	WIDTH OF STROKE
1/8	.020
LINES	.015

REF: DWG. MS-3096

1	TRX-J	
Q'TY./UNIT	MODEL USED ON	ASS'Y. NO.
SCALE	CODE	
FULL		
THE CONTENTS OF THIS DRAWING ARE THE EXCLUSIVE PROPERTY OF THE TECHNICAL MATERIEL CORP. ITS UNAUTHORIZED USE OR REPRODUCTION IN WHOLE OR IN PART IS STRICTLY FORBIDDEN.		

REQ'D.	ITEM	PART NUMBER	DESCRIPTION	SYMBOL
J. STRUMER LIST OF MATERIAL				
MATERIAL		THE TECHNICAL MATERIEL CORP. MAMARONECK, NEW YORK		
FINISH		TITLE LETTERING PANEL, REAR		
UNLESS OTHERWISE SPECIFIED DIMENSIONS ARE IN INCHES AND INCLUDE CHEMICALLY APPLIED OR PLATED FINISHES		DRAWN <i>N. Peters</i>	DATE 2-27-63	FINAL APPROVAL <i>BP</i>
DECIMALS .X ± .05 .XX ± .01 .XXX ± .005		CHECKED <i>HSA</i>	DATE 3-12-63	DATE 3-14-63
FRACTIONS ± 1/64 ANGLES ± 0° 30'		ELECT. DES. <i>D. Koshov</i>	DATE 3-12-63	DATE 3-12-63
TOLERANCES		MECH. DES.	DATE	DATE

NOTES

LD-1190