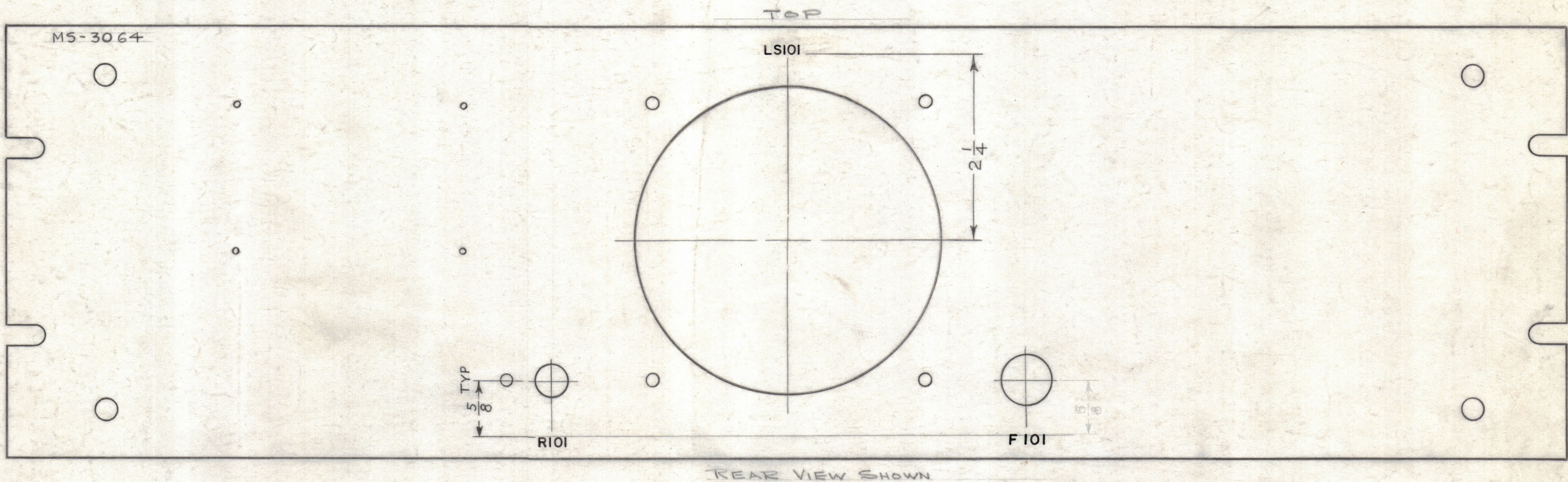


REVISIONS						
ZONE	SYM	DESCRIPTION	DATE	E.M.N. NO.	DRAFT	CHKD
-	A	SEE SHEET 1 OF 2 REVISION "A"	1-22-63	8053		
	B	SEE SHEET 1 OF 2 REVISION "B"	4-2-65	13767		
	C	SHEET 3 ADDED	5-1-90			



- NOTES:
- NOTES: ENGRAVING TO BE 1/8 HIGH, .010 DEEP
1. MARKING PROCESS: AS PER TMC SPECIFICATION S-727 GOTHIC.
 2. ALL LETTER GROUPS TO BE CENTERED ON HOLES.
 3. ALL LETTERING 1/8 HIGH, BLACK GOTHIC.

NOT REQUIRED ON COMMERCIAL UNITS
5-1-90 *g. de la...*

REF-MS 3064 (4)

1	BSP-1	
QTY./UNIT	MODEL USED ON	ASS'Y. NO.
SCALE	CODE	

THE CONTENTS OF THIS DRAWING ARE THE EXCLUSIVE PROPERTY OF THE TECHNICAL MATERIEL CORP. ITS UNAUTHORIZED USE OR REPRODUCTION IN WHOLE OR IN PART IS STRICTLY FORBIDDEN.

REQ'D.	ITEM	PART NUMBER	DESCRIPTION	SYMBOL
J. STRUMER LIST OF MATERIAL				
MATERIAL		THE TECHNICAL MATERIEL CORP. MAMARONECK, NEW YORK		
FINISH		TITLE LETTERING, REAR OF FRONT PANEL		
UNLESS OTHERWISE SPECIFIED DIMENSIONS ARE IN INCHES AND INCLUDE CHEMICALLY APPLIED OR PLATED FINISHES		DRAWN <i>H. de la...</i>	DATE 12-14-62	FINAL APPROVAL <i>BP</i>
		CHECKED <i>H. de la...</i>	DATE 12-17-62	
DECIMALS .X ± .05 .XX ± .01 .XXX ± .005		FRACTIONS ± 1/64 ANGLES ± 0° 30'		ELECT. DES. <i>H. de la...</i>
TOLERANCES		DATE 12-18-62		LD-1172
		MECH. DES. <i>H. de la...</i>		REV. LTR. C
		DATE 12-18-62		SHEET 2 OF 3

NOTES

LD-1172
C