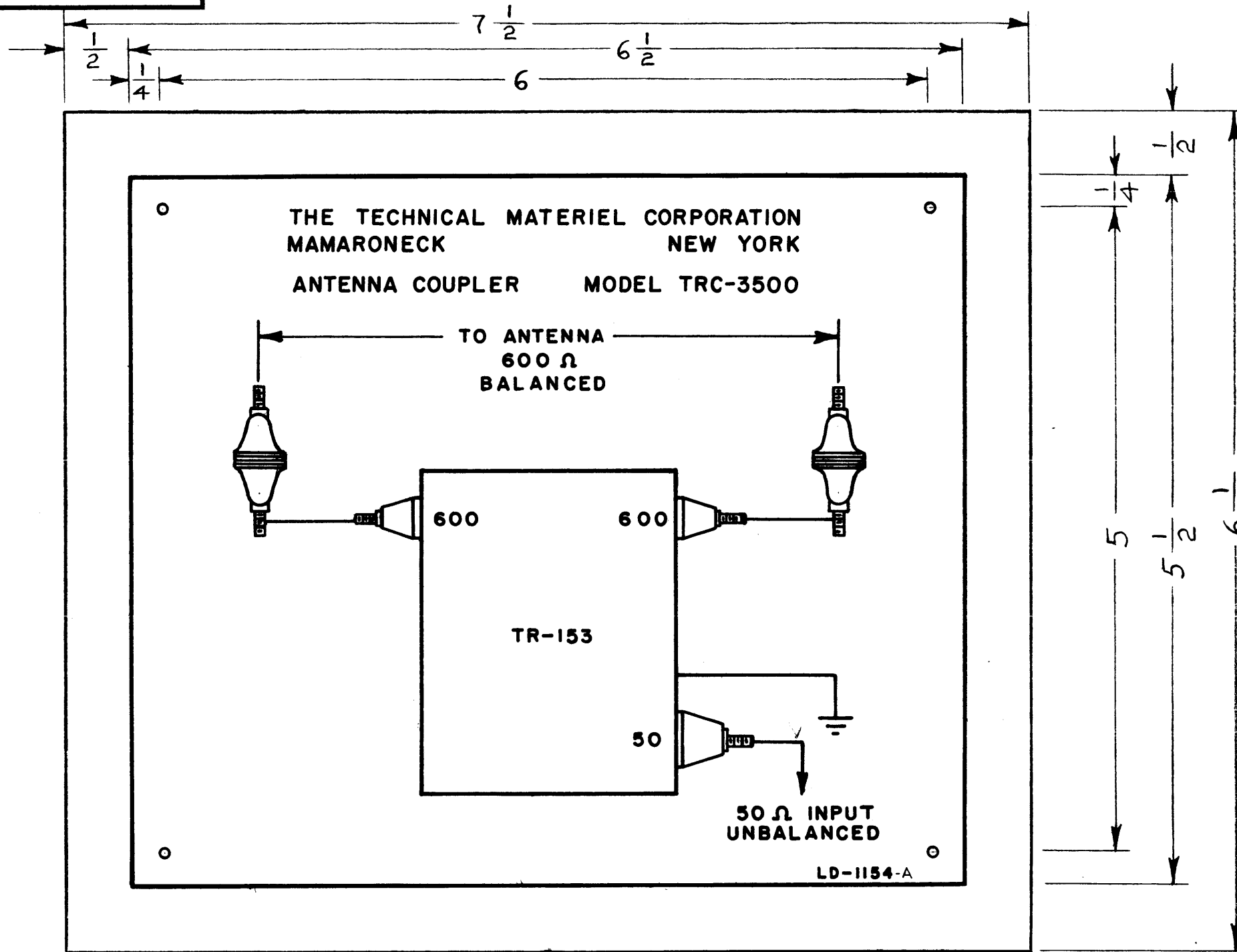


LD-1154 B

THE CONTENTS OF THIS DRAWING ARE THE EXCLUSIVE PROPERTY OF THE TECHNICAL MATERIEL CORP. ITS UNAUTHORIZED USE OR REPRODUCTION IN WHOLE OR IN PART IS STRICTLY FORBIDDEN.



**NOTICE TO PERSONS RECEIVING THIS DRAWING**

THE TECHNICAL MATERIEL CORPORATION claims proprietary right in the material disclosed hereon. This drawing is issued in confidence for engineering information only and may not be reproduced or used to manufacture anything shown hereon without permission from THE TECHNICAL MATERIEL CORPORATION to the user. This drawing is loaned for mutual assistance and is subject to recall at any time.

Property of:  
THE TECHNICAL MATERIEL CORPORATION  
MAMARONECK, NEW YORK

**NOTES:**

- 1) PRINTED DIRECTLY ON FACE OF PLASTIC.
- 2) 7/64 (.109) DIA HOLES 4 REQUIRED.
- 3) MATERIAL: POLISHED WHITE OPAQUE VINYL PLASTIC.

B	DIRECTLY REPLACED BY LD-623	3-25-63	8640	<del>YNY</del>	<del>YNY</del>	<del>YNY</del>
A	FINISH DELETED MATERIAL CLARIFIED	2-1-63	8168	<del>YNY</del>	<del>YNY</del>	<del>YNY</del>
SYM	DESCRIPTION	DATE	CH. NO.	DRAFTS	CHECKER	ENG. APP.

UNLESS OTHERWISE SPECIFIED:  
DIMENSIONS ARE IN INCHES  
TOLERANCES N  
FRACTIONS ± 1/64 DECIMALS ± .005 ANGLES ± 1/2°

SCALE: 1:1  
MAXIMUM ALLOWABLE TOLERANCES HAVE BEEN DETERMINED AND ANY DEVIATIONS WILL BE CAUSE FOR REJECTION.  
REMOVE ALL BURRS AND SHARP EDGES

SUPERSEDED

DIRECTLY REPLACED BY LD-623

3-25-63 ~~YNY~~

REQ. PER UNIT	MODEL	SECTION	ASS'Y. NO.	DATE
1	TRC-3500/50			11-8-62
USED ON				

REQ.	ITEM	PART NO.	DESCRIPTION	YMBOL
		.015 STOCK SIZE	THE TECHNICAL MATERIEL CORP. MAMARONECK, NEW YORK	
		SEE NOTE #3	SCHMATIC DIAGRAM	
		MATERIAL	TR-153 TRC-3500	
			<i>n. Peters</i> <i>JDe</i> <i>BP</i>	
		TYPE & TEMPER	HEAT TREAT. SPEC.	DRAWN CHECKED FINAL APPROVAL
				LD-1154 B
		FINISH & SPEC. NO.	ELEC. DES. APP. MECH. DES. APP.	