

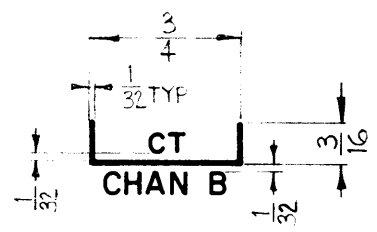
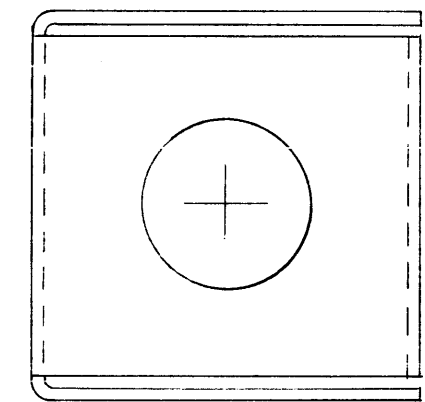
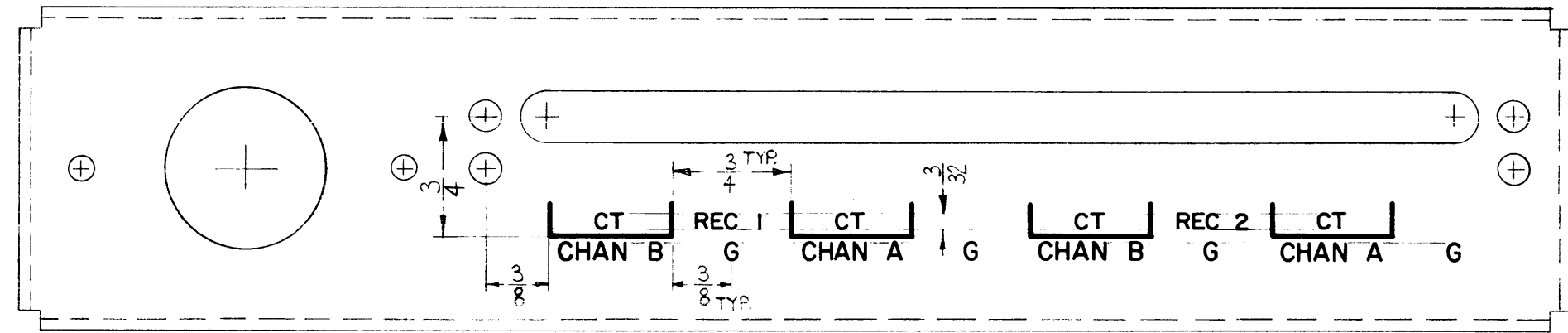
LD-1137

REVISIONS

SYM	DESCRIPTION	DATE	E.M.N. NO.	DRAFT	CHKD	APPD
-----	-------------	------	------------	-------	------	------

NOTICE TO PERSONS RECEIVING THIS DRAWING
 THE TECHNICAL MATERIEL CORPORATION claims proprietary right in the material disclosed hereon. This drawing is issued in confidence for engineering information only and may not be reproduced or used to manufacture anything shown hereon without permission from THE TECHNICAL MATERIEL CORPORATION to the user. This drawing is loaned for mutual assistance and is subject to recall at any time.

Property of:
 THE TECHNICAL MATERIEL CORPORATION
 MAMARONECK, NEW YORK



TYP DETAIL

~UNLESS OTHERWISE SPECIFIED~
 1/8 HIGH BLACK LUSTERLESS GOTHIC LETTERING.
 (PHOTO WRINLAY PROCESS OR EQUIVALENT)

REF: MS-3004 (4).

REQ'D.	ITEM	PART NUMBER	DESCRIPTION	SYMBOL
R. KOHN LIST OF MATERIAL				
MATERIAL		THE TECHNICAL MATERIEL CORP. MAMARONECK, NEW YORK		
FINISH		TITLE LETTERING, AF OUTPUT & ANT. INPUT CHASSIS		
UNLESS OTHERWISE SPECIFIED DIMENSIONS ARE IN INCHES AND INCLUDE CHEMICALLY APPLIED OR PLATED FINISHES		DRAWN W. A. Franco	DATE 8-15-62	FINAL APPROVAL <i>BP</i>
DECIMALS .X ± .05 .XX ± .01 .XXX ± .005		CHECKED <i>W. A. Franco</i>	DATE 8-16-62	DATE
FRACTIONS ± 1/64 ANGLES ± 0° 30'		ELECT. DES. R. KOHN	DATE 15 AUG 62	DATE
TOLERANCES		MECH. DES.	DATE	DATE
			LD-1137	
			SHEET	REV. LTR.

NOTES

1	RAK-21B-1	
Q'TY./UNIT	MODEL USED ON	ASS'Y. NO.
SCALE	CODE	
THE CONTENTS OF THIS DRAWING ARE THE EXCLUSIVE PROPERTY OF THE TECHNICAL MATERIEL CORP. ITS UNAUTHORIZED USE OR REPRODUCTION IN WHOLE OR IN PART IS STRICTLY FORBIDDEN.		