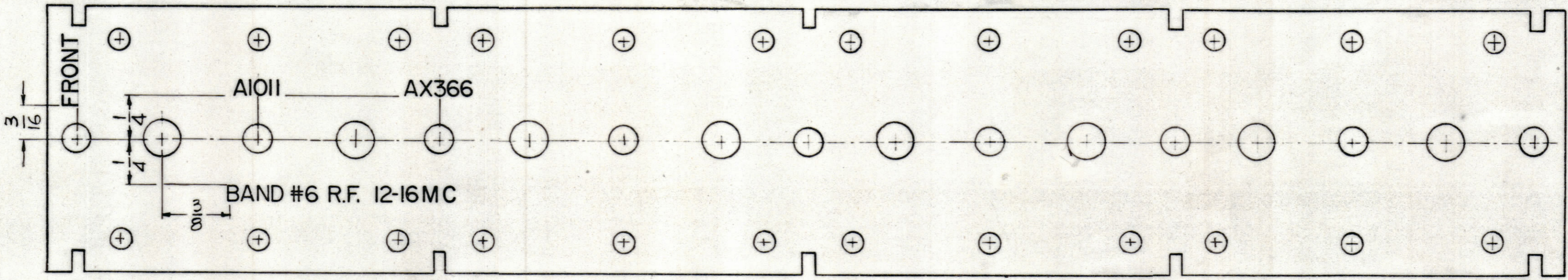


REVISIONS							
ZONE	SYM	DESCRIPTION	DATE	E.M.N. NO.	DRAFT	CHKD	APPD

**NOTICE TO PERSONS RECEIVING THIS DRAWING**

THE TECHNICAL MATERIEL CORPORATION claims proprietary right in the material disclosed herein. This drawing is issued in confidence for engineering information only and may not be reproduced or used to manufacture anything shown hereon without permission from THE TECHNICAL MATERIEL CORPORATION to the user. This drawing is loaned for mutual assistance and is subject to recall at any time.

Property of:  
**THE TECHNICAL MATERIEL CORPORATION**  
 MAMARONECK, NEW YORK



- UNLESS OTHERWISE SPECIFIED -**
- 1- 3/32 HIGH BLACK LUSTERLESS GOTHIC LETTERING.  
 MARKING PROCESS: AS PER TMC SPECIFICATION 5727
  - 2- LETTER GROUPS TO BE CENTERED ON HOLES

LD-1126

REF.~PX-649(2)

REQ'D.	ITEM	PART NUMBER	DESCRIPTION	SYMBOL
<b>ANGER LIST OF MATERIAL</b>				
MATERIAL		THE TECHNICAL MATERIEL CORP. MAMARONECK, NEW YORK		
FINISH		TITLE LETTERING, R.F. TERMINAL BOARD BAND #6		
UNLESS OTHERWISE SPECIFIED DIMENSIONS ARE IN INCHES AND INCLUDE CHEMICALLY APPLIED OR PLATED FINISHES		DRAWN <i>D. Berman</i>	DATE 6/16/62	FINAL APPROVAL <i>BP</i>
DECIMALS .1 ± .05 .2 ± .01 .XXX ± .008		CHECKED <i>J. De</i>	DATE 6/20/62	DATE 6/20/62
FRACTIONS ± 1/64 ANGLES ± 0° 30'		ELECT. DES. <i>V. ANGER</i>	DATE 6/20/62	DATE 6/20/62
TOLERANCES		MECH. DES.	DATE	DATE
THE CONTENTS OF THIS DRAWING ARE THE EXCLUSIVE PROPERTY OF THE TECHNICAL MATERIEL CORP. ITS UNAUTHORIZED USE OR REPRODUCTION IN WHOLE OR IN PART IS STRICTLY FORBIDDEN.		LD-1126		
NOTES		SHEET		
		REV. LTR.		