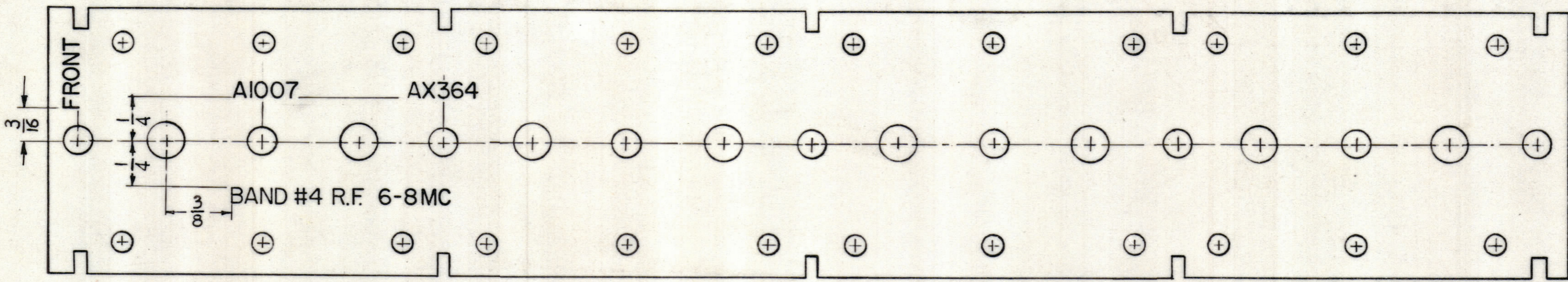


REVISIONS							
ZONE	SYM	DESCRIPTION	DATE	E.M.N. NO.	DRAFT	CHKD	APPD

NOTICE TO PERSONS RECEIVING THIS DRAWING

THE TECHNICAL MATERIEL CORPORATION claims proprietary right in the material disclosed hereon. This drawing is issued in confidence for engineering information only and may not be reproduced or used to manufacture anything shown hereon without permission from THE TECHNICAL MATERIEL CORPORATION to the user. This drawing is loaned for individual assistance and is subject to recall at any time.

Property of:
THE TECHNICAL MATERIEL CORPORATION
MAMARONECK, NEW YORK



- UNLESS OTHERWISE SPECIFIED -
- 1 - 3/32 HIGH BLACK LUSTERLESS, GOTHIC LETTERING.
 - MARKING PROCESS: AS PER TMC SPECIFICATION S-727
 - 2 - LETTER GROUPS TO BE CENTERED ON HOLES.

LD-1124

REF ~ PX-649(2)

REQ'D.	ITEM	PART NUMBER	DESCRIPTION	SYMBOL
ANGER LIST OF MATERIAL				
MATERIAL		THE TECHNICAL MATERIEL CORP. MAMARONECK, NEW YORK		
FINISH		TITLE LETTERING, R.F. TERMINAL BOARD BAND #4		
UNLESS OTHERWISE SPECIFIED DIMENSIONS ARE IN INCHES AND INCLUDE CHEMICALLY APPLIED OR PLATED FINISHES	DRAWN <i>D. J. Man</i>	DATE 6/18/62	FINAL APPROVAL <i>BP</i>	DATE
DECIMALS .X ± .08 .XX ± .01 .XXX ± .006	TOLERANCES	FRACTIONS ± 1/64 ANGLES ± 0° 30'	ELECT. DES. <i>J. ANGER</i>	DATE 6/20/62
MECH. DES.			DATE	DATE
SHEET			LD-1124	REV. LTR.

Q'TY./UNIT	MODEL USED ON	ASS'Y. NO.
DOUBLE	(B) A-2374	

NOTES

THE CONTENTS OF THIS DRAWING ARE THE EXCLUSIVE PROPERTY OF THE TECHNICAL MATERIEL CORP. ITS UNAUTHORIZED USE OR REPRODUCTION IN WHOLE OR IN PART IS STRICTLY FORBIDDEN.