

7

6

5

4

3

2

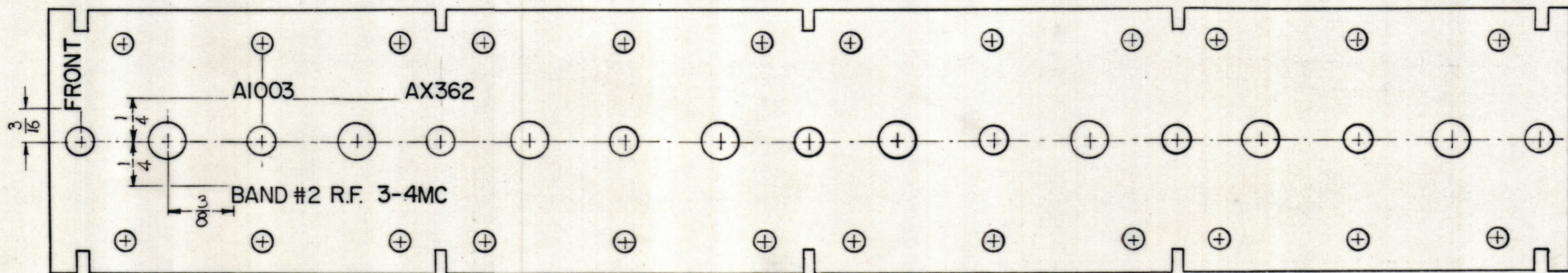
1

NOTICE TO PERSONS RECEIVING THIS DRAWING

THE TECHNICAL MATERIEL CORPORATION claims proprietary right in the material disclosed hereon. This drawing is issued in confidence for engineering information only and may not be reproduced or used to manufacture anything shown hereon without permission from THE TECHNICAL MATERIEL CORPORATION to the user. The user is liable for actual assistance and is subject to recall at any time.

Property of:
THE TECHNICAL MATERIEL CORPORATION
MAMARONECK, NEW YORK

REVISIONS							
ZONE	SYM	DESCRIPTION	DATE	E.M.N. NO.	DRAFT	CHKD	APPD



~UNLESS OTHERWISE SPECIFIED~
 1 - 3/32 HIGH BLACK LUSTERLESS, GOTHIC LETTERING
 MARKING PROCESS: AS PER TMC SPECIFICATION S-727
 2 - LETTER GROUPS TO BE CENTERED ON HOLES.

MAR 3 1964

REF:PX-649 (2)

REQ'D.	ITEM	PART NUMBER	DESCRIPTION	SYMBOL
ANGER LIST OF MATERIAL				
MATERIAL			THE TECHNICAL MATERIEL CORP. MAMARONECK, NEW YORK	
FINISH			TITLE LETTERING, RF TERMINAL BOARD BAND #2	
UNLESS OTHERWISE SPECIFIED DIMENSIONS ARE IN INCHES AND INCLUDE CHEMICALLY APPLIED OR PLATED FINISHES			DRAWN <i>D. J. Mann</i> DATE 6/16/62 CHECKED <i>W. J. Gandy</i> DATE 20/62 ELEC. DES. <i>J. ANGER</i> DATE 6/16/62 MECH. DES. DATE	FINAL APPROVAL <i>BP</i> DATE SHEET REV. LTR.
DECIMALS .X ± .05 .XX ± .01 .XXX ± .005			FRACTIONS ± 1/64 ANGLES ± 0° 30'	LD-1122 SHEET

HFR-1/T		ASBY. NO.
QTY./UNIT	MODEL USED ON	
SCALE DOUBLE	CODE (8)A-2372	
THE CONTENTS OF THIS DRAWING ARE THE EXCLUSIVE PROPERTY OF THE TECHNICAL MATERIEL CORP. ITS UNAUTHORIZED USE OR REPRODUCTION IN WHOLE OR IN PART IS STRICTLY FORBIDDEN.		

NOTES

LD-1122

7

6

5

4

3

2

1