

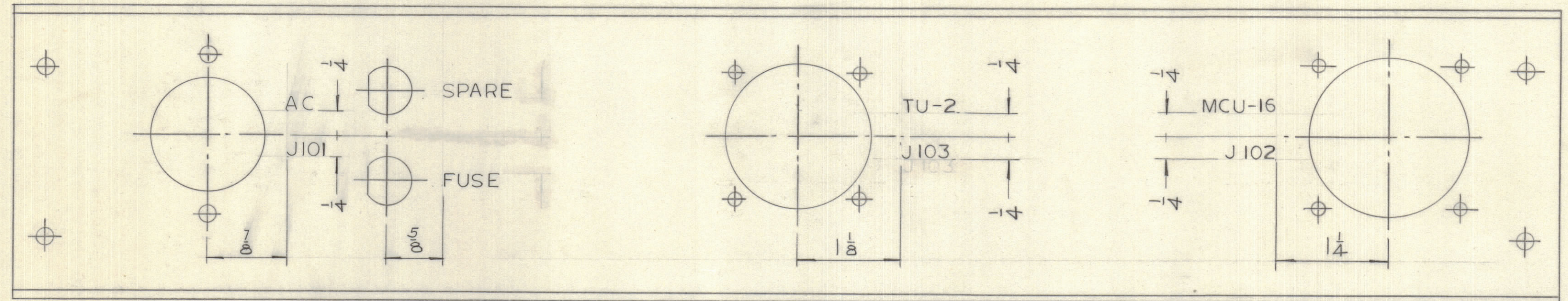
IF IT IS FOUND DESIRABLE TO CHANGE ANY TOLERANCE OR OTHER DETAIL SPECIFIED ON THIS DRAWING NOTIFY THE PURCHASER PROMPTLY.

MAXIMUM ALLOWABLE TOLERANCES HAVE BEEN DETERMINED AND DEVIATIONS WILL BE CAUSE FOR REJECTION. REMOVE ALL BURRS AND SHARP EDGES.

DIMENSIONS IN INCHES UNLESS OTHERWISE SPECIFIED.

ISSUE	ITEM	CHANGED FROM	DATE	CN. NO.	DRAFTS	CHECKER	ENG. APP.
X		ENG. RELEASE	14/11/70		G.C.T.		

REQ.	ITEM	PART NO.	DESCRIPTION	SYMBOL
------	------	----------	-------------	--------



LD 10419	X
----------	---

MARKING PROCESS: AS PER TMC SPECIFICATION S-727.  
 LETTERING: 1/8 HIGH BLACK GOTHIC, LOCATED AS SHOWN.

REF MS11138

TOLERANCES		SCALE: FULL SIZE
ALL OTHERS	DEC. DIM. ± .005 FRAC. DIM. ± 1/64 ANGULAR DIM. ± 0° 30'	DRILL, PUNCH, COMMERCIAL STOCK SIZES AND MANUFACTURERS TOLERANCES ARE NOT INCLUDED.

ATCU-16A	111/70		Nov 14-70
MODEL	PROJECT NO.	ASS'Y. NO.	DATE

TMC (Canada) LIMITED OTTAWA ONTARIO			
REAR PANEL LETTERING DRG.			
G.C.T.			
DRAWN	ELEC. DES. APP.	MECH. DES. APP.	
PROCTOR			
CHECKED		FINAL APPROVAL	
VEL TRIDITE		LD10419 X	
FINISH & SPEC. NO.			