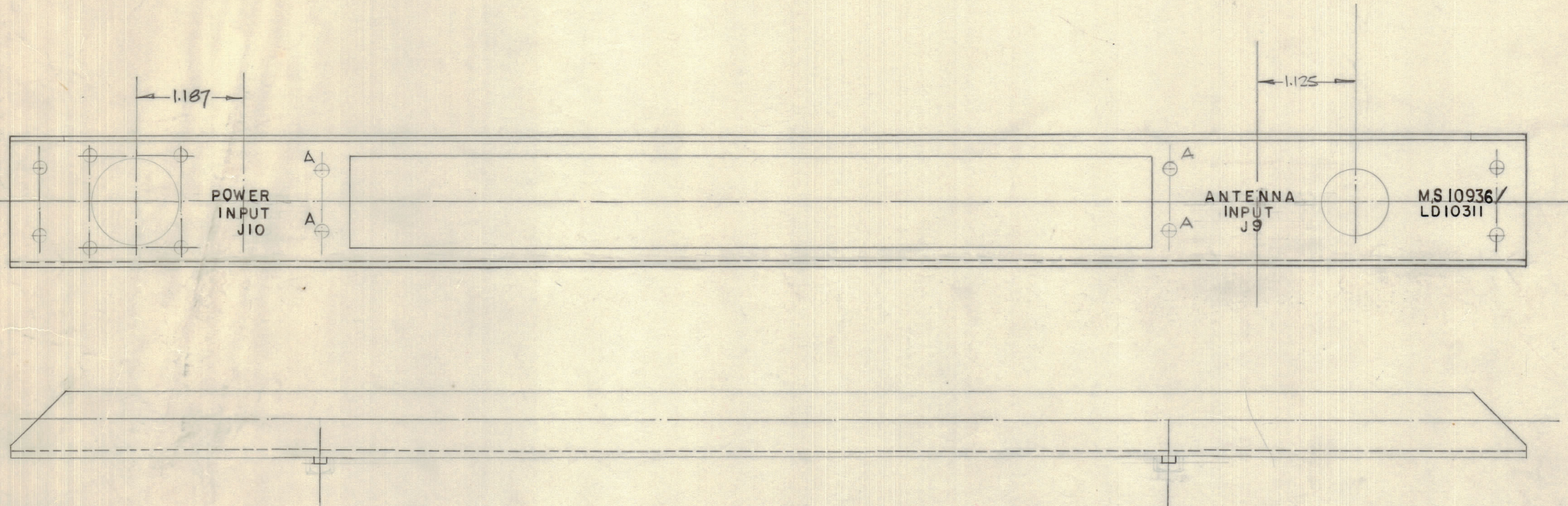


IF IT IS FOUND DESIRABLE TO CHANGE ANY TOLERANCE OR OTHER DETAIL SPECIFIED ON THIS DRAWING NOTIFY THE PURCHASER PROMPTLY.		DIMENSIONS IN INCHES UNLESS OTHERWISE SPECIFIED					
MAXIMUM ALLOWABLE TOLERANCES HAVE BEEN DETERMINED AND DEVIATIONS WILL BE CAUSE FOR REJECTION. REMOVE ALL BURRS AND SHARP EDGES.							
ISSUE	ITEM	CHANGED FROM	DATE	CN. NO.	DRAFTS	CHECKER	ENG. APP.
Ø		REL TO PROD.	NOV 29/68		AP		W
A		REV. AS PER CEMN	25 FEB 69		B		W
B		REV PER CEMN	23 NOV 77	1086	DR	LB	W

REQ.	ITEM	PART NO.	DESCRIPTION	SYMBOL
		2407-13	ASSEMBLY	



LD10311 B

OBSOLETE? NO LONGER REQ'D. USE ED 3115

MARKING PROCESS - AS PER TMC SPEC 727. LETTERING - 1/8" HIGH BLACK GOTHIC LOCATED AS SHOWN

REF. MS 10936

TMC (Canada) OTTAWA	
STOCK SIZE	PANEL, REAR
MATERIAL	WEIGHT PER PC.
TYPE & TEMPER	BARTLETT
HEAT TREAT. SPEC.	CHECKED
FINISH & SPEC. NO.	LD10311 B

LMC 8 50 & 75	AZ 10006		
AMC 8 50 & 75	AZ 10007		
	AZ 10001	11 NOV 1968	
	AZ 10004		
MODEL	PROJECT NO.	ASS'Y. NO.	DATE

TOLERANCES		SCALE: FULL
ALL OTHERS	DEC. DIM. ± .XX	DRILL, PUNCH, COMMERCIAL STOCK SIZES AND MANUFACTURERS TOLERANCES ARE NOT INCLUDED.
	FRAC. DIM. ± 1/64	
	ANGULAR DIM. ± 0° 30'	