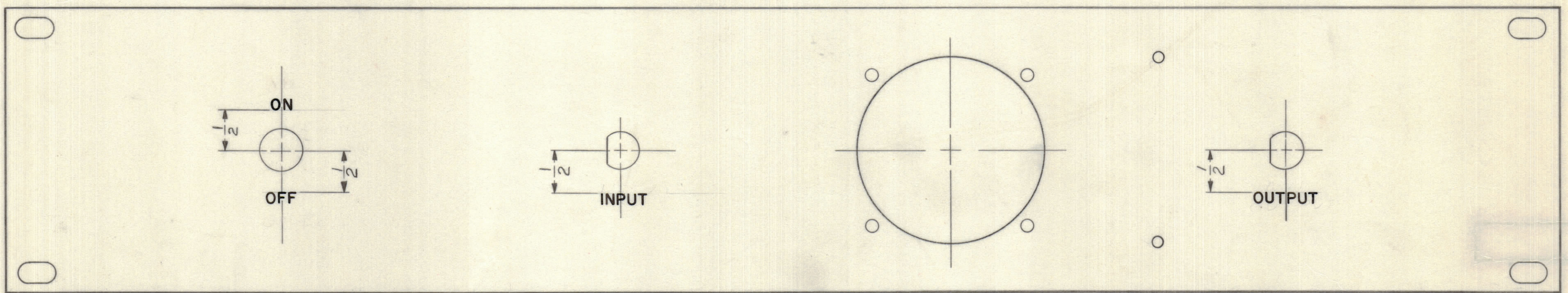


| IF IT IS FOUND DESIRABLE TO CHANGE ANY TOLERANCE OR OTHER DETAIL SPECIFIED ON THIS DRAWING NOTIFY THE PURCHASER PROMPTLY. | | DIMENSIONS IN INCHES UNLESS OTHERWISE SPECIFIED | | | | | |
|---|------|---|-----------|---------|--------|---------|-----------|
| MAXIMUM ALLOWABLE TOLERANCES HAVE BEEN DETERMINED AND DEVIATIONS WILL BE CAUSE FOR REJECTION. REMOVE ALL BURRS AND SHARP EDGES. | | | | | | | |
| ISSUE | ITEM | CHANGED FROM | DATE | CN. NO. | DRAFTS | CHECKER | ENG. APP. |
| 0 | | REL TO PROD | SEPT 3/68 | | AP | | |

| REQ. | ITEM | PART NO. | DESCRIPTION | SYMBOL |
|------|------|----------|-------------|--------|
|------|------|----------|-------------|--------|



ENGRAVING
FRONT VIEW

REF. TMC SPEC. S566

| WIDTH OF STROKE | DEPTH OF STROKE | HEIGHT OF LETTERS |
|-----------------|-----------------|-------------------|
| .020 | .020 | 1/8 |

LETTERS TO BE WHITE FILLED

FINISH NOTES :-

- AFTER ENGRAVING
- 1) S114 - ZINC CHROMATE PRIMER } FRONT AND
 - 2) S115 - SMOOTH GRAY ENAMEL } EDGES ONLY

REF. - MS 10930

| TOLERANCES | | SCALE: |
|------------|---|---|
| ALL OTHERS | DEC. DIM. ± .05 FRAC. DIM. ± 1/64 ANGULAR DIM. ± 0° 30' | DRILL, PUNCH, COMMERCIAL STOCK SIZES AND MANUFACTURERS TOLERANCES ARE NOT INCLUDED. |

| | | |
|--------|-------------|-----------|
| MDTM-1 | 070/68 | AUG 23/68 |
| MODEL | PROJECT NO. | DATE |

| | | | |
|--------------------|---------|--|-----------------|
| STOCK SIZE | | TMC (Canada) LIMITED OTTAWA ONTARIO | |
| MATERIAL | | TEST METER DYNAMIC PANEL | |
| WEIGHT PER PC. | | LETTERING | |
| TYPE & TEMPER | AP | ELEC. DES. APP. | MECH. DES. APP. |
| HEAT TREAT. SPEC. | CHECKED | FINAL APPROVAL | |
| FINISH & SPEC. NO. | | LD 10305 0 | |