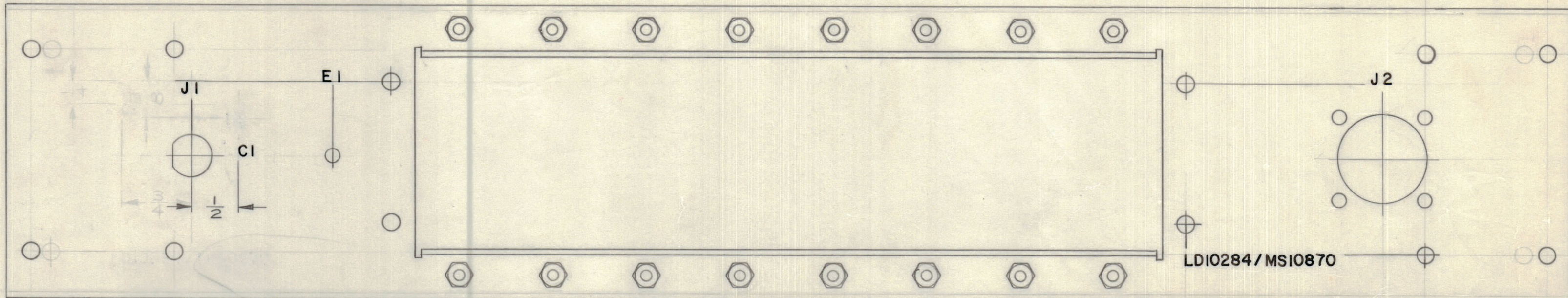


| IF IT IS FOUND DESIRABLE TO CHANGE ANY TOLERANCE OR OTHER DETAIL SPECIFIED ON THIS DRAWING NOTIFY THE PURCHASER PROMPTLY. | | DIMENSIONS IN INCHES UNLESS OTHERWISE SPECIFIED | | | | | |
|---|------|---|-------------|---------|--------|---------|-----------|
| MAXIMUM ALLOWABLE TOLERANCES HAVE BEEN DETERMINED AND DEVIATIONS WILL BE CAUSE FOR REJECTION. REMOVE ALL BURRS AND SHARP EDGES. | | | | | | | |
| ISSUE | ITEM | CHANGED FROM | DATE | CN. NO. | DRAFTS | CHECKER | ENG. APP. |
| Ø | | REL TO PROD | APRIL 11/68 | | AP | | |
| A | | REV TO CEMN | APRIL 15/68 | 357 | AP | | |
| B | | REV AS PER CEMN | 3 JUNE 1970 | 798 | R | | |

| REQ. | ITEM | PART NO. | DESCRIPTION | SYMBOL |
|------|------|----------|-------------|--------|
|------|------|----------|-------------|--------|

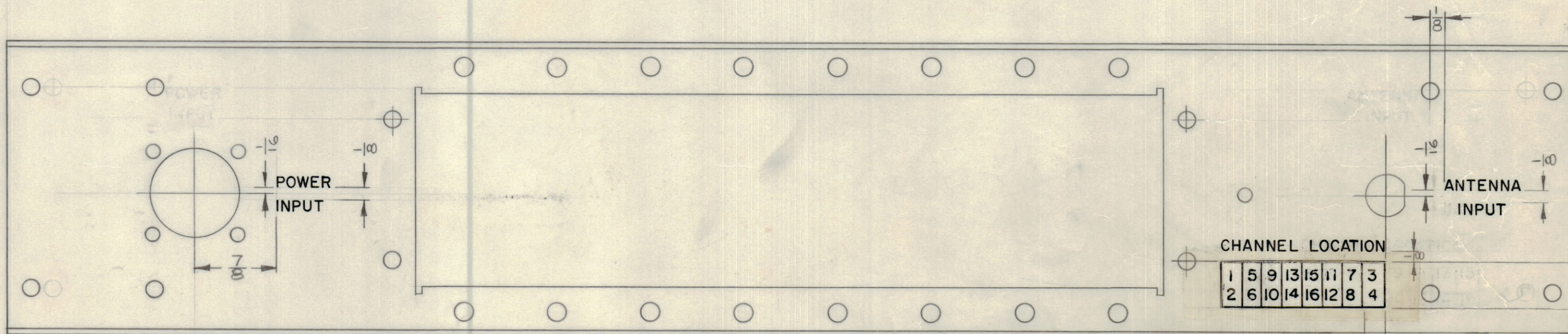


(INTERIOR VIEW)

TMC PART NO.

TMC PART NO.

LD10284 B



(EXTERIOR VIEW)

MARKING PROCESS: AS PER TMC SPECIFICATION S-727.
 LETTERING: 1/8 HIGH BLACK GOTHIC, LOCATED AS SHOWN.

REF: MS10870

| | | | |
|--------------------|--|--|----------------|
| STOCK SIZE | | TMC (Canada) LIMITED OTTAWA ONTARIO | |
| MATERIAL | | PANEL, REAR | |
| TYPE & TEMPER | | RPL | |
| HEAT TREAT. SPEC. | | CHECKED | FINAL APPROVAL |
| FINISH & SPEC. NO. | | LD10284 B | |

| | | |
|---------|-------------|-----------|
| AX10047 | 070/68 | FEB 22/68 |
| MODEL | PROJECT NO. | DATE |

| TOLERANCES | | SCALE: |
|------------|--|---|
| ALL OTHERS | DEC. DIM. ± .X = .05 FRAC. DIM. ± 1/64 ANGULAR DIM. ± 0° 30' | DRILL, PUNCH, COMMERCIAL STOCK SIZES AND MANUFACTURERS TOLERANCES ARE NOT INCLUDED. |