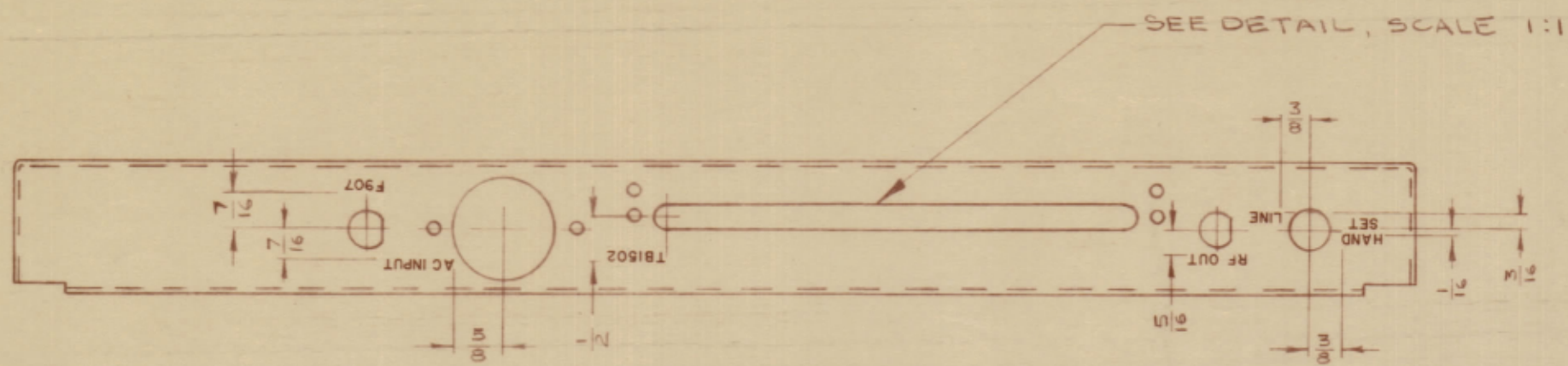
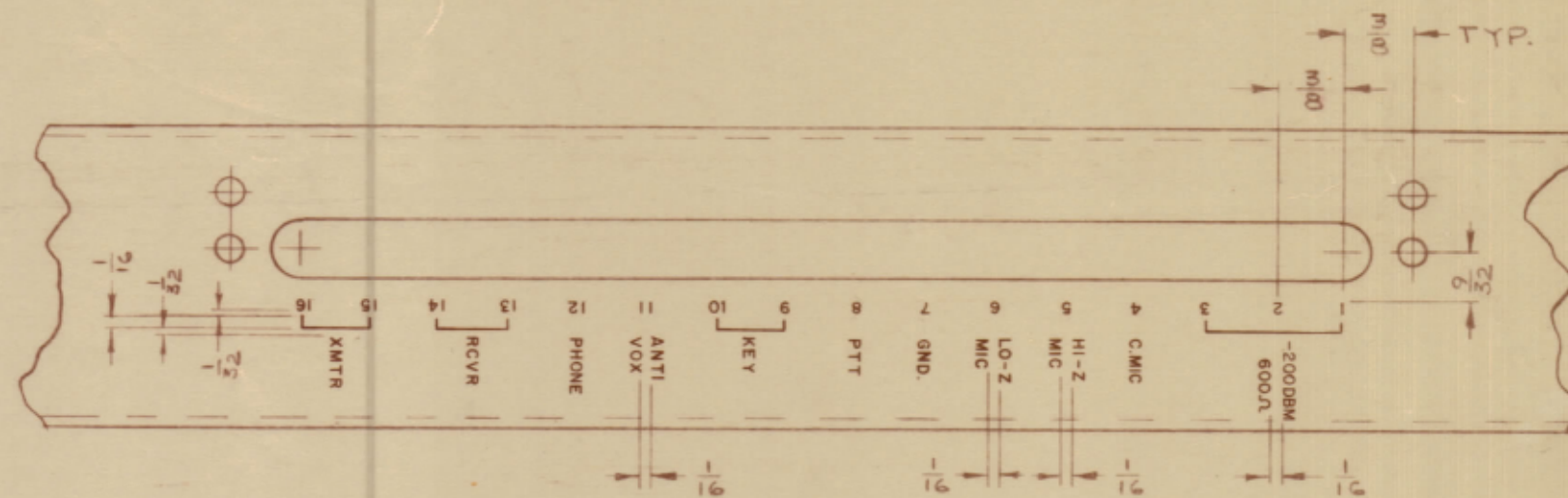


IF IT IS FOUND DESIRABLE TO CHANGE ANY TOLERANCE OR OTHER DETAIL SPECIFIED ON THIS DRAWING NOTIFY THE PURCHASER PROMPTLY.		DIMENSIONS IN INCHES UNLESS OTHERWISE SPECIFIED.					
MAXIMUM ALLOWABLE TOLERANCES HAVE BEEN DETERMINED AND DEVIATIONS WILL BE CAUSE FOR REJECTION. REMOVE ALL BURRS AND SHARP EDGES.							
ISSUE	ITEM	CHANGED FROM	DATE	CN. NO.	DRAFTS	CHECKER	ENG. APP.
X2		REV AS PER EDC	13 3 67	EDC	A1*	RPL	
0		REL TO PRODUCTION	13 6 67				

REQ.	ITEM	PART NO.	DESCRIPTION	SYMBOL
------	------	----------	-------------	--------



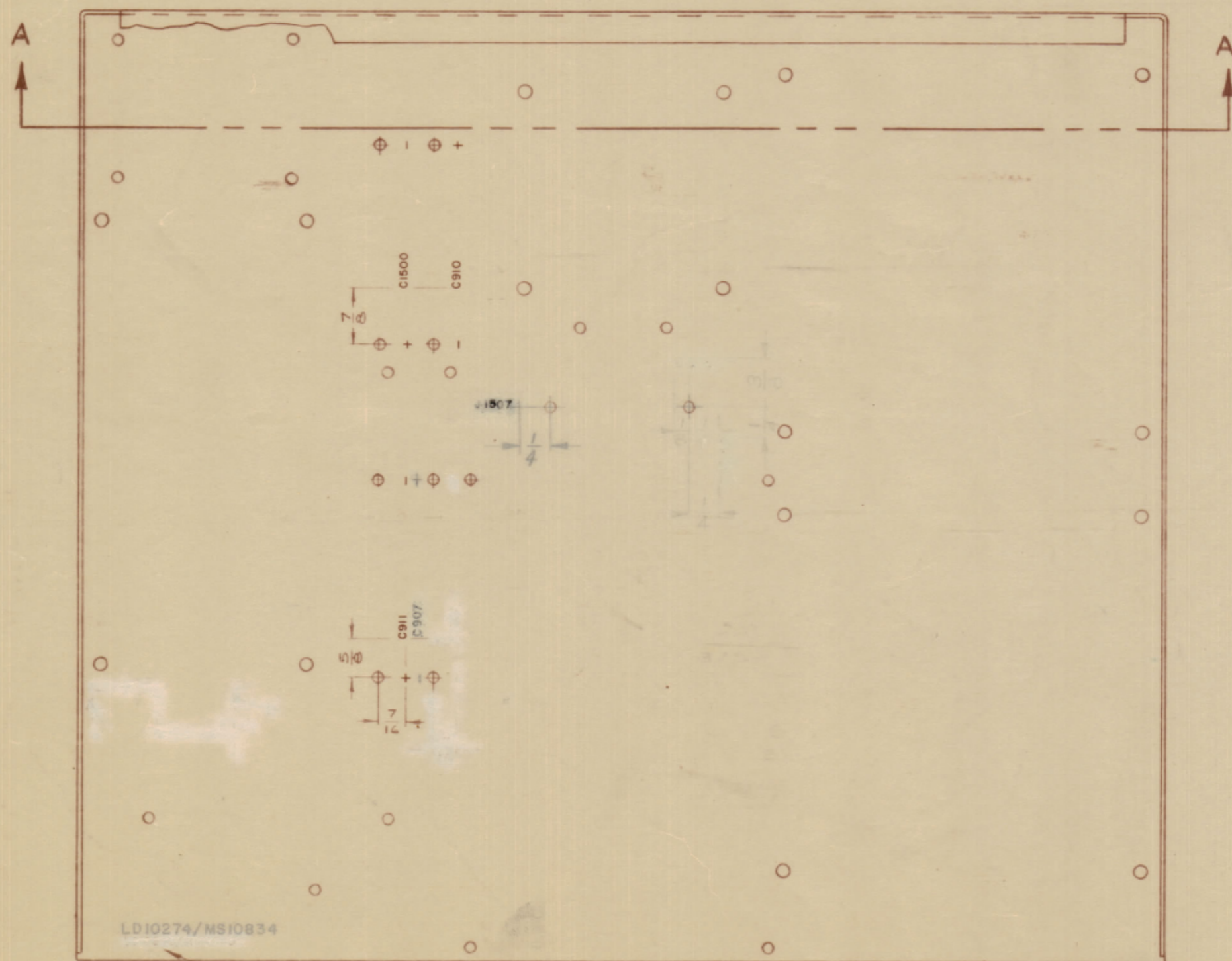
SEE DETAIL, SCALE 1:1



DETAIL 1:1 SCALE

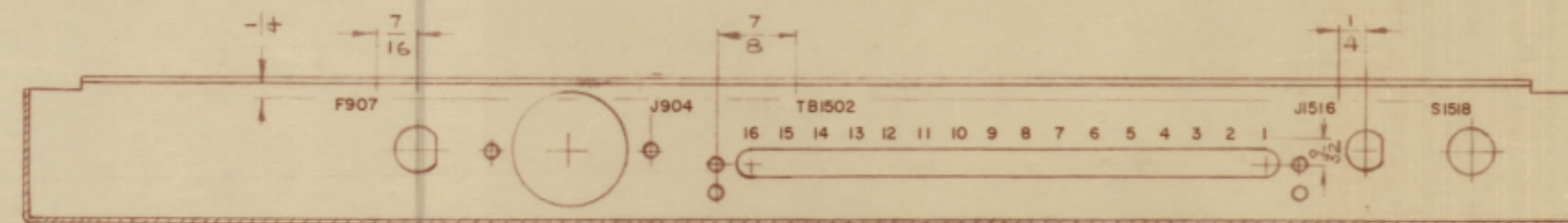
MARKING PROCESS: AS PER TMC SPECIFICATION S-727.
 LETTERING: 1/16 HIGH BLACK GOTHIC, LOCATED AS SHOWN.

LD10274 ϕ



LD10274/MS10834

TMC PART NO. C/W LATEST REV. LETTER



SECTION "AA"

NOTE: THIS PART IS IDENTICAL TO PART NO. LD10274 WITH THE EXCEPTED DETAIL SHOWN.

REF: MS10834

TOLERANCES		SCALE: 1:2
ALL OTHERS	DEC. DIM. \pm FRAC. DIM. \pm ANGULAR DIM. \pm	DRILL, PUNCH, COMMERCIAL STOCK SIZES AND MANUFACTURERS TOLERANCES ARE NOT INCLUDED.

STE-1A	071/67		26 JUNE 67
MODEL	PROJECT NO.	ASSY. NO.	DATE

STOCK SIZE		TMC (Canada) LIMITED OTTAWA ONTARIO	
MATERIAL		LETTERING, MAIN CHASSIS	
TYPE & TEMPER		RPL	
HEAT TREAT SPEC.		CHECKED	FINAL APPROVAL
FINISH & SPEC. NO.		LD10274 ϕ	