

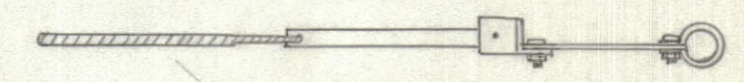
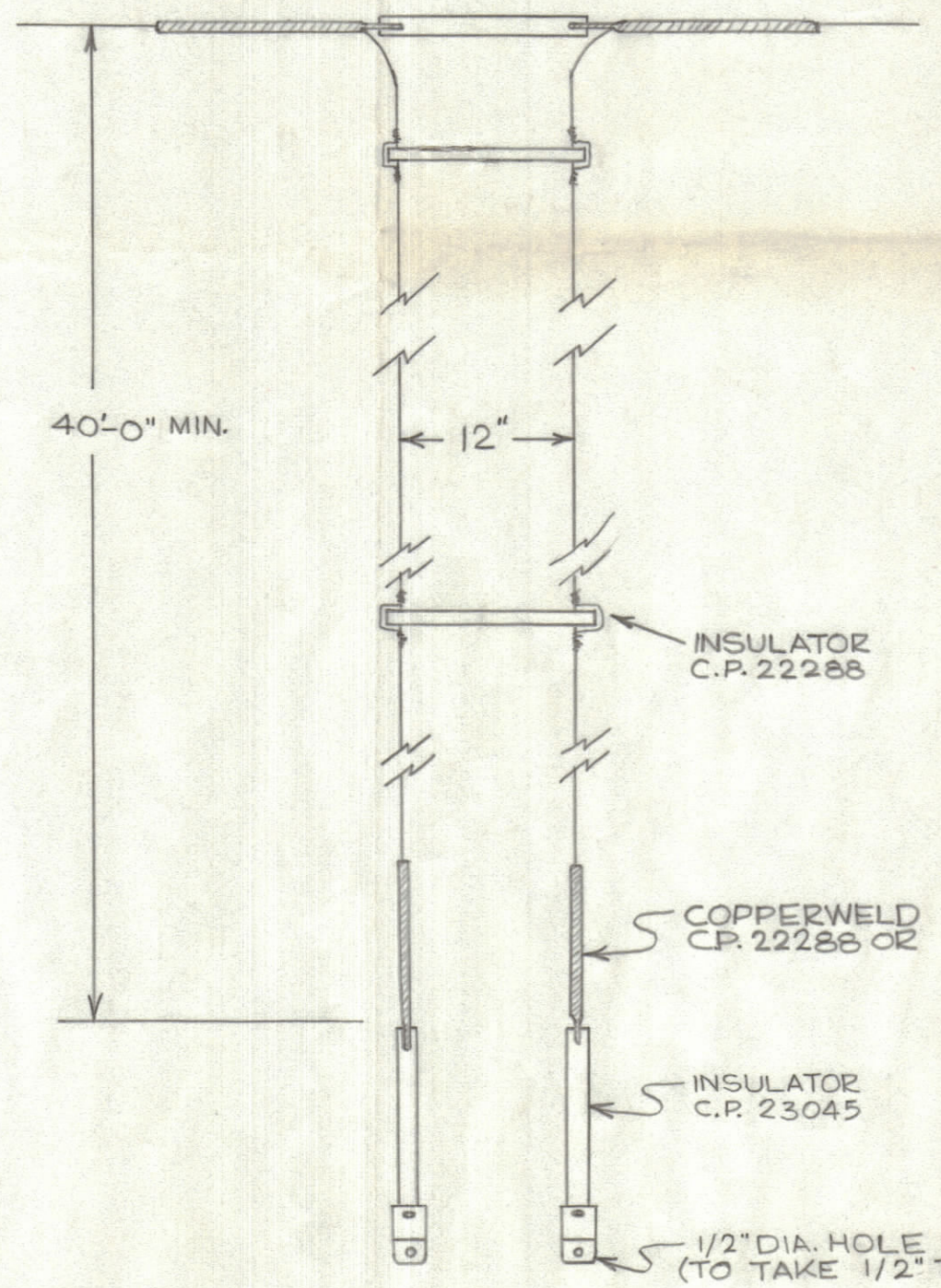
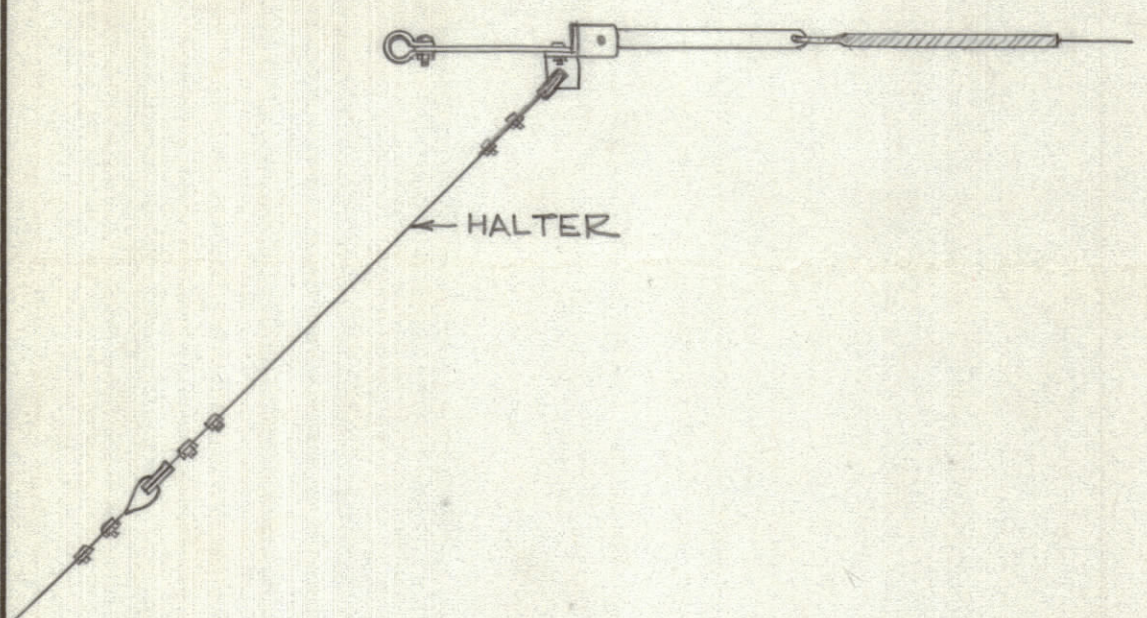
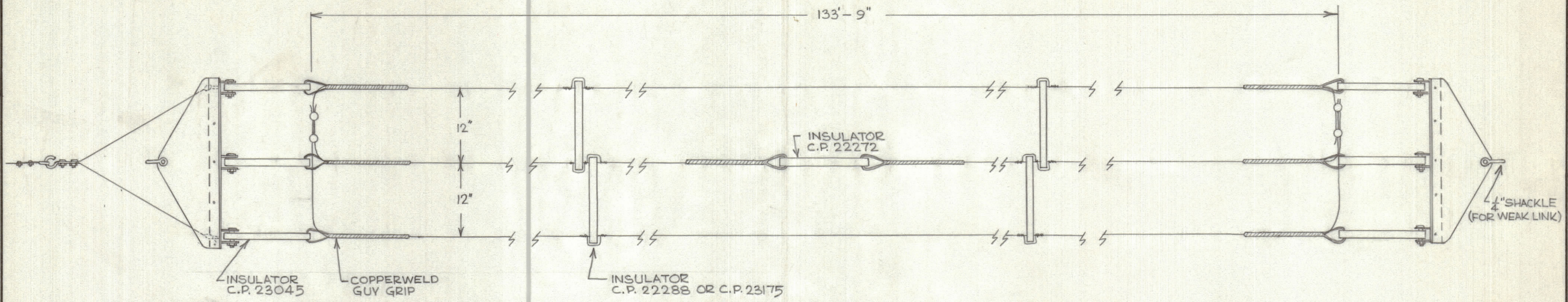
IF IT IS FOUND DESIRABLE TO CHANGE ANY TOLERANCE OR OTHER DETAIL SPECIFIED ON THIS DRAWING NOTIFY THE PURCHASER PROMPTLY.

MAXIMUM ALLOWABLE TOLERANCES HAVE BEEN DETERMINED AND DEVIATIONS WILL BE CAUSE FOR REJECTION. REMOVE ALL BURRS AND SHARP EDGES.

DIMENSIONS IN INCHES UNLESS OTHERWISE SPECIFIED

ISSUE	ITEM	CHANGED FROM	DATE	CN. NO.	DRAFTS	CHECKER	ENG. APP.

REQ.	ITEM	PART NO.	DESCRIPTION	SYMBOL



ID10268

NOTE:  
 ALL WIRE: 3#1/2 HIGH STRENGTH COPPERWELD  
 40% CONDUCTIVITY BREAKING LOAD 2.236#  
 INPUT IMPEDANCE: 600 OHM

TOLERANCES		SCALE:
ALL OTHERS	DEC. DIM. ± _____ FRAC. DIM. ± _____ ANGULAR DIM. ± _____	DRILL, PUNCH, COMMERCIAL STOCK SIZES AND MANUFACTURERS TOLERANCES ARE NOT INCLUDED.

MODEL	PROJECT NO.	ASS'Y. NO.	DATE
			14 Sept 62

TMC (Canada) LIMITED OTTAWA ONTARIO			
3 WIRE DIPOLE ANTENNA			
STOCK SIZE			
MATERIAL	WEIGHT PER PC.		
TYPE & TEMPER		J.P.C. DRAWN	MECH. DES. APP. D.P.A.
HEAT TREAT. SPEC.		CHECKED	FINAL APPROVAL
FINISH & SPEC. NO.			ID10268