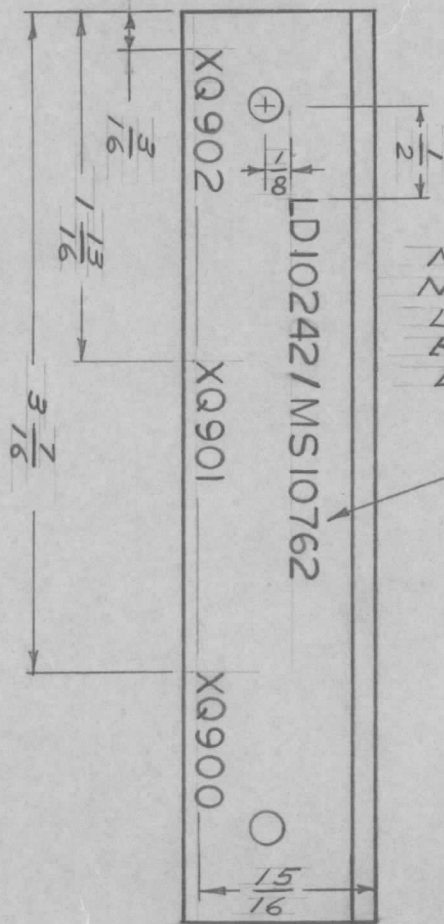
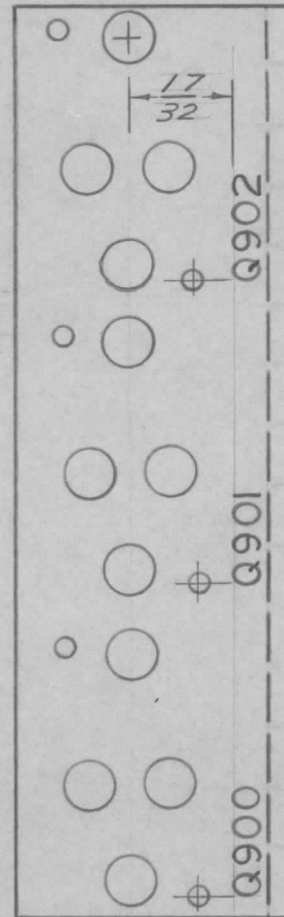


ISSUE	ITEM	CHANGED FROM	DATE	CN. NO.	DRAFTS	CHECKER	ENG. APP.	REQ.	ITEM	PART NO.	DESCRIPTION	SYMBOL
Ø		REL TO PROD.	14-12-66		RD							



MARK TMC  
NO WITH  
LATEST REV.  
REVISION  
LETTERS



**MARKING PROCESS:**

AS PER TMC SPECIFICATION S-727.

1/8 HIGH BLACK GOTHIC,  
LOCATED AS SHOWN.

REF: MS10762

STE A-1		005/67		BMA 10548-2		14 DEC 66				<b>TMC (Canada) LIMITED</b> OTTAWA ONTARIO		
MODEL		PROJECT NO.		ASS'Y. NO.		DATE		STOCK SIZE				
USED ON								MATERIAL		WEIGHT PER PC.		
MAXIMUM ALLOWABLE TOLERANCES HAVE BEEN DETERMINED AND DEVIATIONS WILL BE CAUSE FOR REJECTION. REMOVE ALL BURRS AND SHARP EDGES				IF IT IS FOUND DESIRABLE TO CHANGE ANY TOLERANCE OR OTHER DETAIL SPECIFIED ON THIS DRAWING NOTIFY THE PURCHASER PROMPTLY.				TYPE & TEMPER		MARKING, BRACKET, MOUNTING, HEAT SINK.		
TOLERANCES				SCALE 1:1				HEAT TREAT. SPEC.		RD DRAWN ELEC. DES. APP. MECH. DES. APP.		
ALL OTHERS		DEC. DIM. ±		DIMENSIONS IN INCHES UNLESS OTHERWISE SPECIFIED				FINISH & SPEC. NO.		CHECKED FINAL APPROVAL		
		FRAC. DIM. ± 64		DRILL, PUNCH, COMMERCIAL STOCK SIZES AND MANUFACTURERS TOLERANCES ARE NOT INCLUDED.						LD10242 Ø		
		ANGULAR DIM. ±										