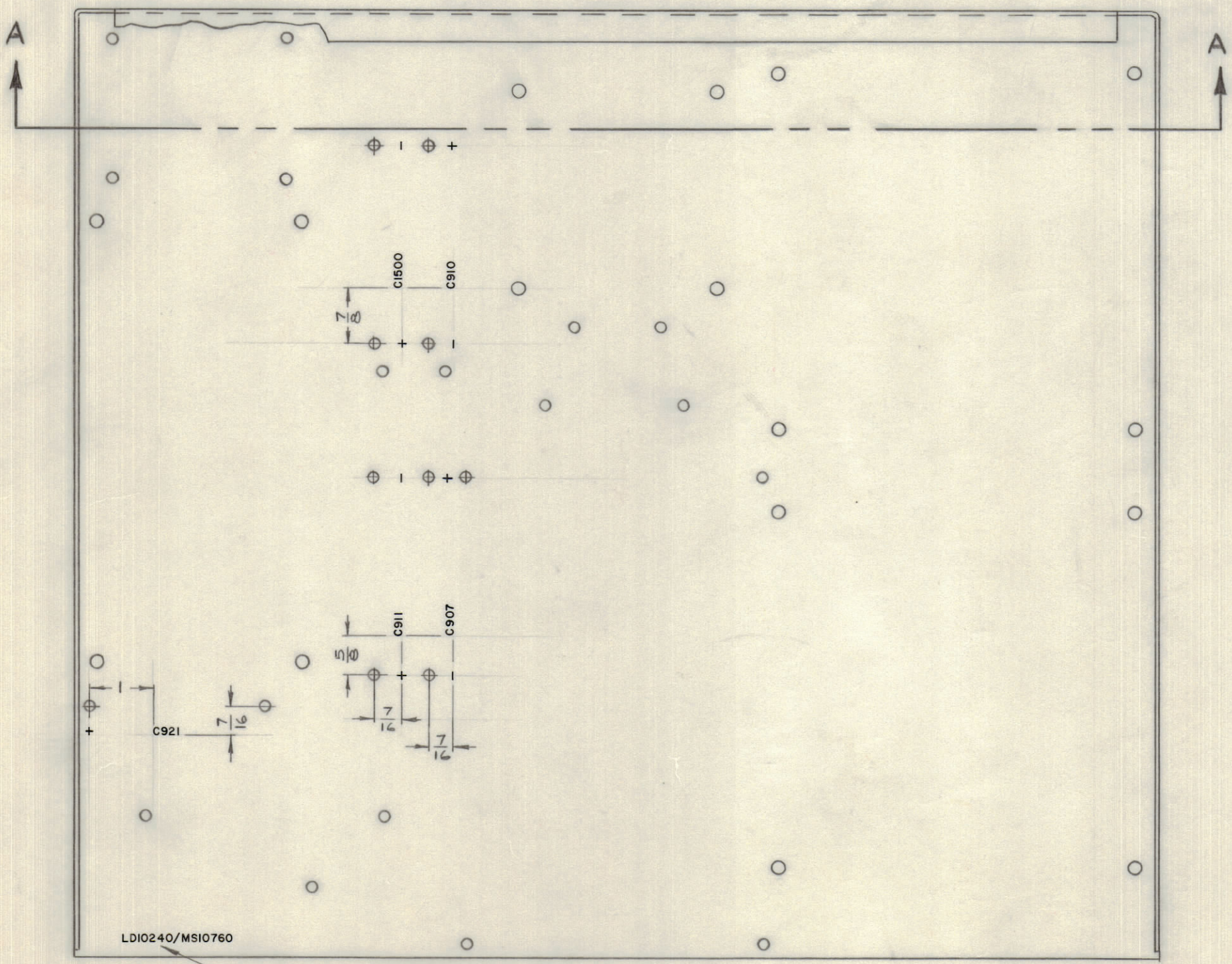
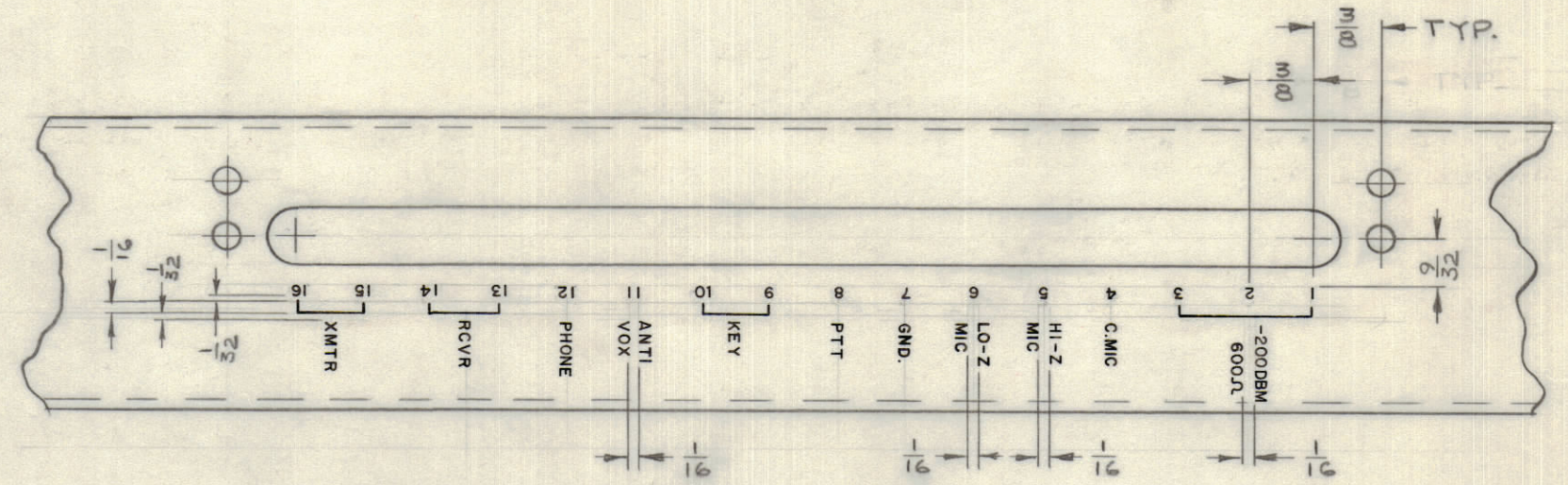
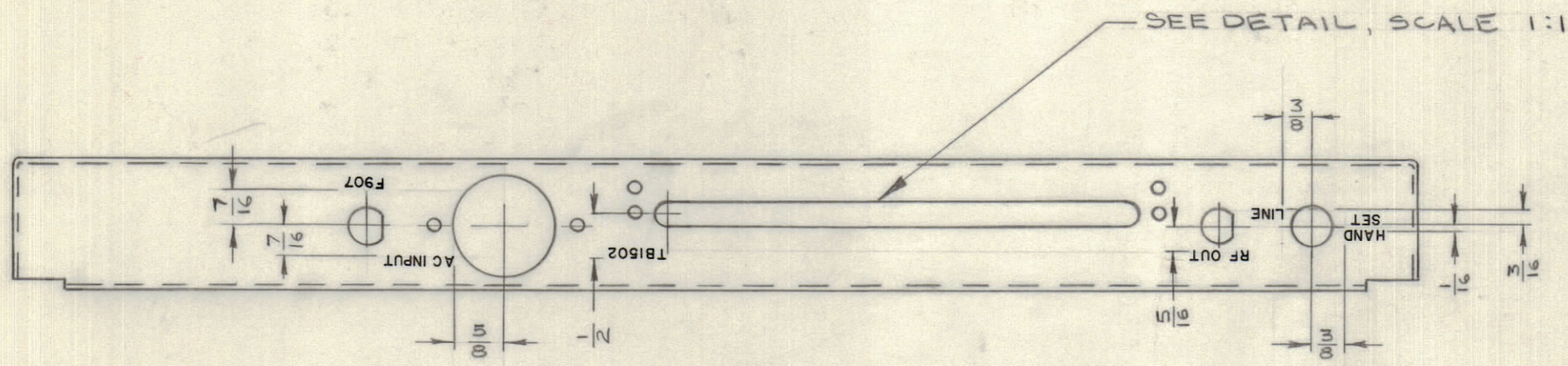


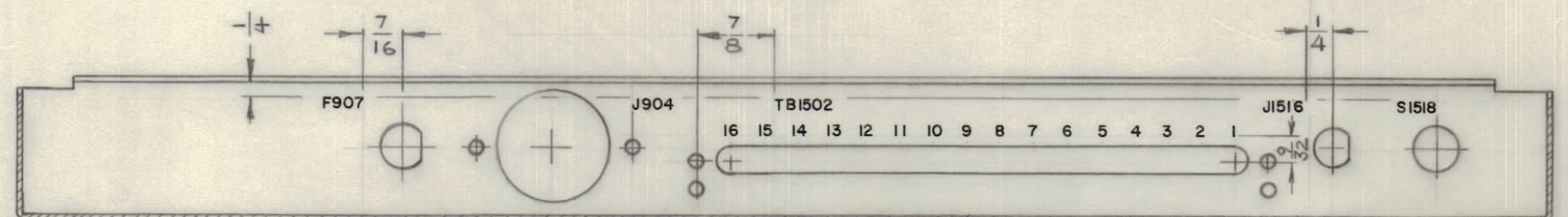
| IF IT IS FOUND DESIRABLE TO CHANGE ANY TOLERANCE OR OTHER DETAIL SPECIFIED ON THIS DRAWING NOTIFY THE PURCHASER PROMPTLY. | | DIMENSIONS IN INCHES UNLESS OTHERWISE SPECIFIED | | | | | |
|---|------|---|----------|---------|--------|---------|-----------|
| MAXIMUM ALLOWABLE TOLERANCES HAVE BEEN DETERMINED AND DEVIATIONS WILL BE CAUSE FOR REJECTION. REMOVE ALL BURRS AND SHARP EDGES. | | | | | | | |
| ISSUE | ITEM | CHANGED FROM | DATE | CN. NO. | DRAFTS | CHECKER | ENG. APP. |
| 0 | | RELEASED TO PROD | DEC 7/66 | | RPL | | |

| REQ. | ITEM | PART NO. | DESCRIPTION | SYMBOL |
|------|------|----------|-------------|--------|
|------|------|----------|-------------|--------|



MARKING PROCESS: AS PER TMC SPECIFICATION S-727.
 LETTERING: 1/16 HIGH BLACK GOTHIC, LOCATED AS SHOWN.

LD10240 \emptyset



REF: MS10760

| | | | |
|--------------------|--|--|----------------|
| STOCK SIZE | | TMC (Canada) LIMITED OTTAWA ONTARIO | |
| MATERIAL | | LETTERING, MAIN CHASSIS | |
| TYPE & TEMPER | | RPL | |
| HEAT TREAT. SPEC. | | | |
| FINISH & SPEC. NO. | | CHECKED | FINAL APPROVAL |

| | | | |
|---------|-------------|------------|------------|
| STE-A-1 | 005/66 | BMA10544 | DEC.6/1966 |
| MODEL | PROJECT NO. | ASS'Y. NO. | DATE |

| | | |
|------------|---|---|
| TOLERANCES | | SCALE: 1:2 |
| ALL OTHERS | DEC. DIM. \pm FRAC. DIM. \pm ANGULAR DIM. \pm | DRILL, PUNCH, COMMERCIAL STOCK SIZES AND MANUFACTURERS TOLERANCES ARE NOT INCLUDED. |