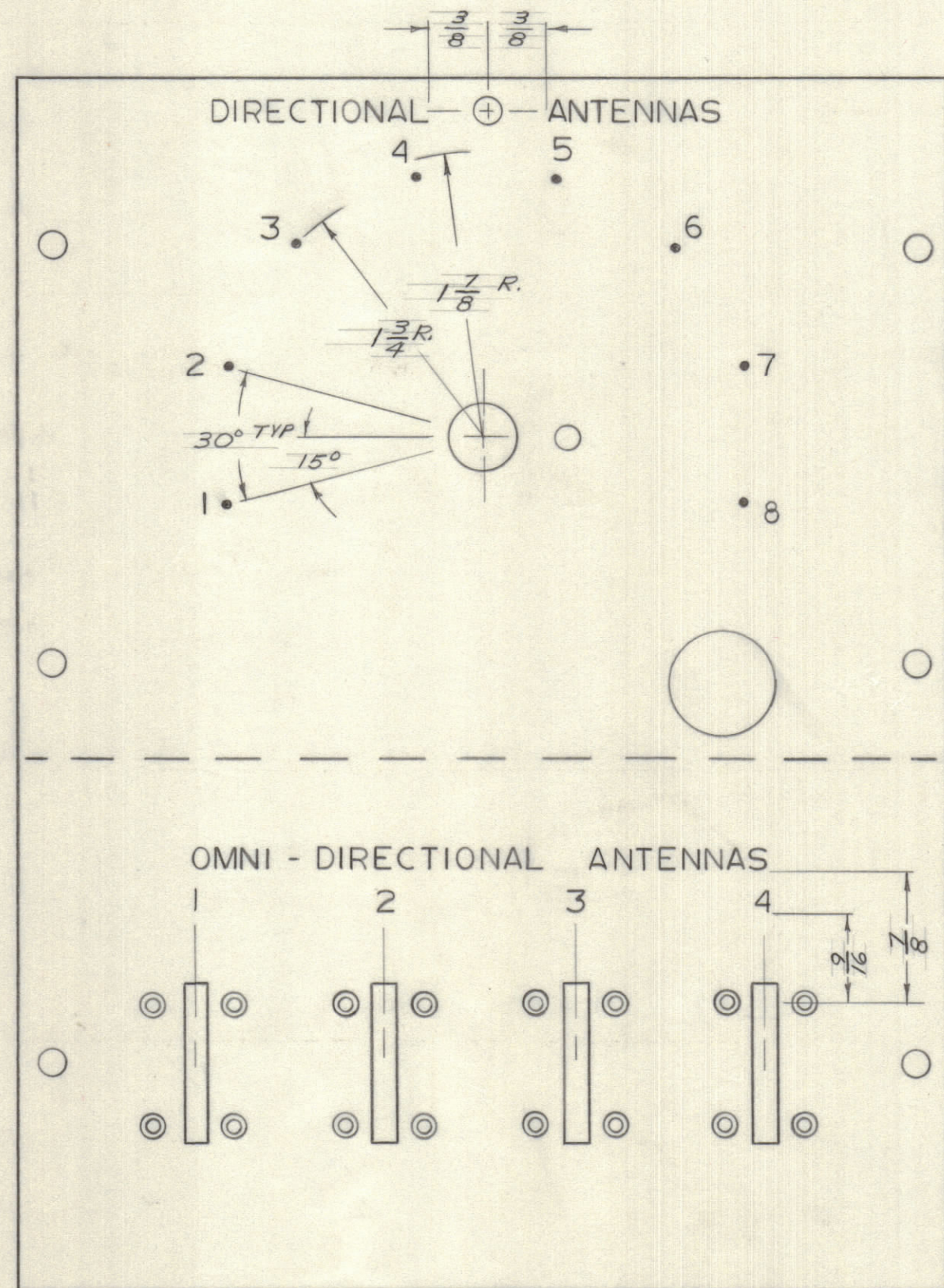


IF IT IS FOUND DESIRABLE TO CHANGE ANY TOLERANCE OR OTHER DETAIL SPECIFIED ON THIS DRAWING NOTIFY THE PURCHASER PROMPTLY.		DIMENSIONS IN INCHES UNLESS OTHERWISE SPECIFIED					
MAXIMUM ALLOWABLE TOLERANCES HAVE BEEN DETERMINED AND DEVIATIONS WILL BE CAUSE FOR REJECTION. REMOVE ALL BURRS AND SHARP EDGES.							
ISSUE	ITEM	CHANGED FROM	DATE	CN. NO.	DRAFTS	CHECKER	ENG. APP.
1		REL TO PROD	15-7-66		RD		<i>(Signature)</i>

REQ.	ITEM	PART NO.	DESCRIPTION	SYMBOL
------	------	----------	-------------	--------



ENGRAVING; PER S566

HEIGHT OF LETTERS	DEPTH OF STROKE	WIDTH OF STROKE
$\frac{1}{8}$	.020	.020
DOTS	.020	$\frac{1}{16}$ DIA.

LD10233  $\phi$

FINISH (AFTER ENGRAVING)

- S114 - ZINC CHROMATE PRIMER } FRONT AND
  - S115 - SMOOTH GRAY ENAMEL } EDGES ONLY
- OR  
PRIME AND PAINT PER CUSTOMER'S SPECIFICATIONS.

REF: M510719

STOCK SIZE		TMC (Canada) LIMITED OTTAWA ONTARIO	
MATERIAL		ENGRAVING FRONT PANEL	
WEIGHT PER PC.		CAB. ANT. SEL.	
TYPE & TEMPER		RD	
HEAT TREAT. SPEC.		DRAWN	
FINISH & SPEC. NO.		ELEC. DES. APP. <i>(Signature)</i> MECH. DES. APP.	
		CHECKED	
		FINAL APPROVAL	
		LANGER	
		LD10233 $\phi$	

AX10011	030	15 JULY 66
MODEL	PROJECT NO.	DATE
USED ON		

TOLERANCES		SCALE: 1:1
ALL OTHERS	DEC. DIM. $\pm$ FRAC. DIM. $\pm$ ANGULAR DIM. $\pm$	DRILL, PUNCH, COMMERCIAL STOCK SIZES AND MANUFACTURERS TOLERANCES ARE NOT INCLUDED.