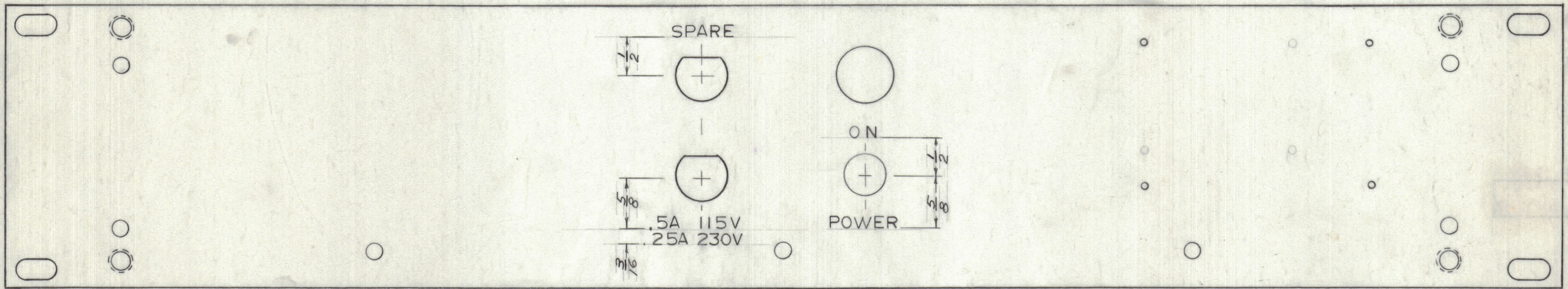


IF IT IS FOUND DESIRABLE TO CHANGE ANY TOLERANCE OR OTHER DETAIL SPECIFIED ON THIS DRAWING NOTIFY THE PURCHASER PROMPTLY.		DIMENSIONS IN INCHES UNLESS OTHERWISE SPECIFIED					
MAXIMUM ALLOWABLE TOLERANCES HAVE BEEN DETERMINED AND DEVIATIONS WILL BE CAUSE FOR REJECTION. REMOVE ALL BURRS AND SHARP EDGES.							
ISSUE	ITEM	CHANGED FROM	DATE	CN. NO.	DRAFTS	CHECKER	ENGR. APP.
A		NOTE CHANGED	14-1-66		RD		

REQ.	ITEM	PART NO.	DESCRIPTION	SYMBOL
------	------	----------	-------------	--------



ENGRAVING: 1/8 HIGH GOTHIC, WHITE FILLED
 DEPTH OF STROKE: .020
 WIDTH OF STROKE: .020

FINISH NOTES

S114 - ZINC CHROMATE PRIMER } FRONT AND
 S115 - SMOOTH GRAY ENAMEL } EDGES ONLY } AFTER ENGRAVING

REF: MS 10620

TOLERANCES		SCALE: 1:1
ALL DEC. DIM. ±	DRILL, PUNCH, COMMERCIAL STOCK	
OTHERS FRAC. DIM. ±	SIZES AND MANUFACTURERS	
ANGULAR DIM. ±	TOLERANCES ARE NOT INCLUDED.	

BAA-3	032/66	14 DEC 65
MODEL	PROJECT NO.	DATE
	ASS'Y. NO.	

STOCK SIZE		TMC (Canada) LIMITED OTTAWA ONTARIO	
MATERIAL		ENGRAVING DETAIL FRONT PANEL	
WEIGHT PER PC.		RD	
TYPE & TEMPER		DRAWN	ELEC. DES. APP. MECH. DES. APP.
HEAT TREAT. SPEC.		CHECKED	FINAL APPROVAL
SEE NOTE		LD 10196 A	
FINISH & SPEC. NO.			