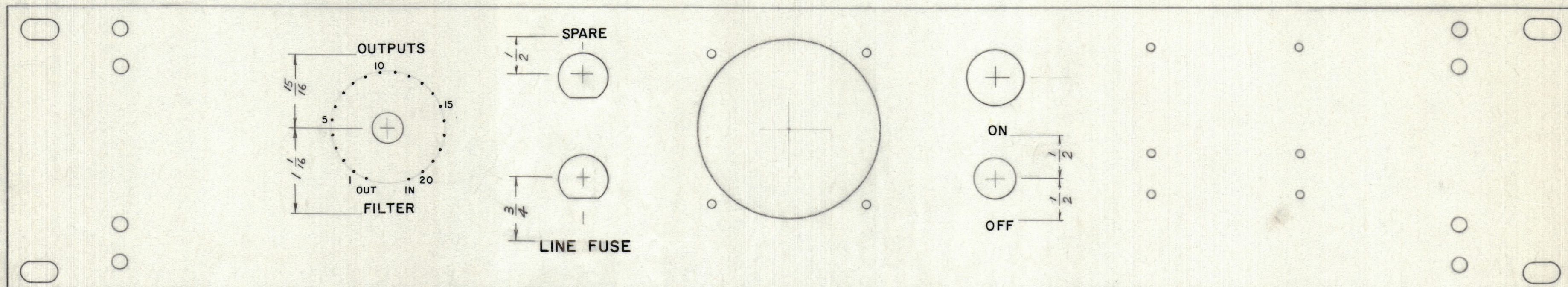


IF IT IS FOUND DESIRABLE TO CHANGE ANY TOLERANCE OR OTHER DETAIL SPECIFIED ON THIS DRAWING NOTIFY THE PURCHASER PROMPTLY.		DIMENSIONS IN INCHES UNLESS OTHERWISE SPECIFIED					
MAXIMUM ALLOWABLE TOLERANCES HAVE BEEN DETERMINED AND DEVIATIONS WILL BE CAUSE FOR REJECTION. REMOVE ALL BURRS AND SHARP EDGES.							
ISSUE	ITEM	CHANGED FROM	DATE	CN. NO.	DRAFTS	CHECKER	ENG. APP.
Ø		RELEASED FOR PROD	17-1-66		RL		
A		REV TO CEMN	14/6/67	233	AP		

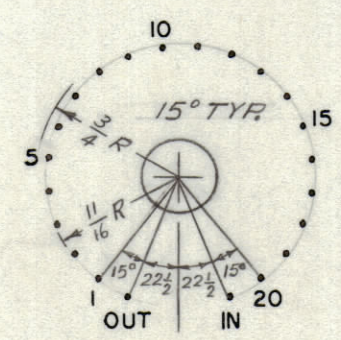
REQ.	ITEM	PART NO.	DESCRIPTION	SYMBOL
------	------	----------	-------------	--------



LD10189 A

ENGRAVING:
 1. - LARGE LETTERS AND NUMERALS 1/8 GOTHIC } DEPTH & WIDTH OF
 - SMALL LETTERS AND NUMERALS 3/64 GOTHIC } STROKE .020
 - DOTS 3/64 DIA., DEPTH .020
 2. ENGRAVING TO BE WHITE FILLED

FINISH NOTES:
 1- S114 - ZINC CHROMATE PRIMER } FRONT AND
 2- S115 - SMOOTH GREY ENAMEL } EDGES ONLY



SW. DETAIL

REF: MS 10615

TOLERANCES		SCALE: 1:1
ALL OTHERS	DEC. DIM. ± FRAC. DIM. ± ANGULAR DIM. ±	DRILL, PUNCH, COMMERCIAL STOCK SIZES AND MANUFACTURERS TOLERANCES ARE NOT INCLUDED.

AMC 20	020/66	A10375	22-10-65
MODEL	PROJECT NO.	ASSY. NO.	DATE

STOCK SIZE		TMC (Canada) LIMITED OTTAWA ONTARIO	
MATERIAL		ENGRAVING DETAIL	
WEIGHT PER PC.		PANEL, FRONT	
TYPE & TEMPER		Nuz	
HEAT TREAT. SPEC.		DRAWN	
CHECKED		ELEC. DES. APP.	
FINISH & SPEC. NO.		MECH. DES. APP.	
SEE NOTE		FINAL APPROVAL	
SHT 1 of 2		LD10189 A	