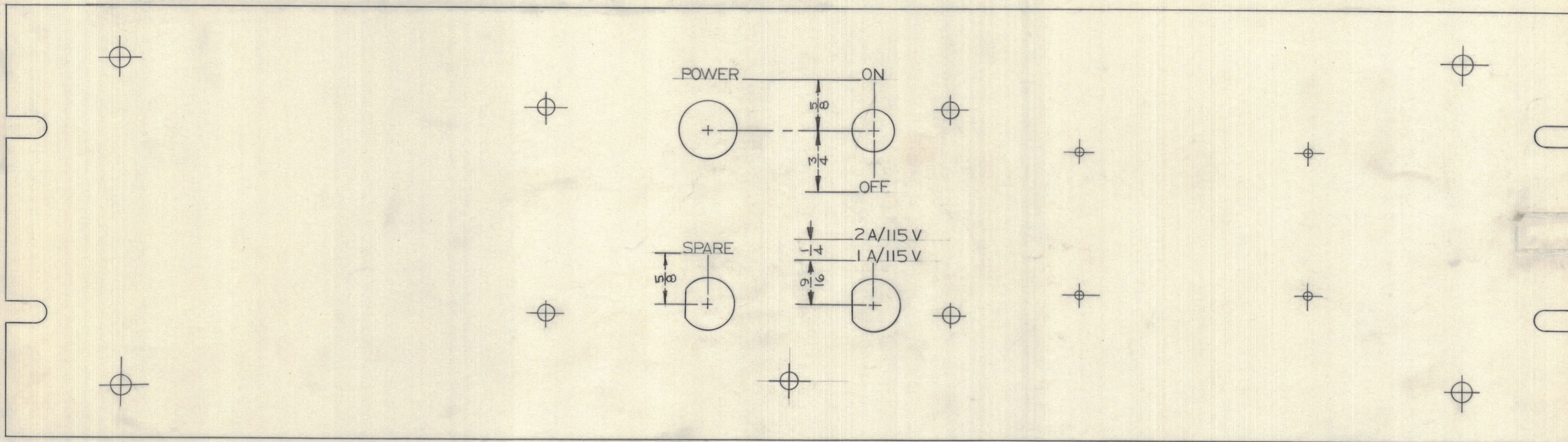


IF IT IS FOUND DESIRABLE TO CHANGE ANY TOLERANCE OR OTHER DETAIL SPECIFIED ON THIS DRAWING NOTIFY THE PURCHASER PROMPTLY.		DIMENSIONS IN INCHES UNLESS OTHERWISE SPECIFIED					
MAXIMUM ALLOWABLE TOLERANCES HAVE BEEN DETERMINED AND DEVIATIONS WILL BE CAUSE FOR REJECTION. REMOVE ALL BURRS AND SHARP EDGES.							
ISSUE	ITEM	CHANGED FROM	DATE	CN. NO.	DRAFTS	CHECKER	ENG. APP.
C		REDRAWN	MAY 19/66		GM	Z. Lee	(Signature)

REQ.	ITEM	PART NO.	DESCRIPTION	SYMBOL
------	------	----------	-------------	--------



LETTERING 1/8 HIGH GOTHIC WHITE FILLED
 WIDTH OF STROKE .020
 DEPTH OF STROKE .020

FINISH NOTES:

S114 - ZINC CHROMATE PRIMER } FRONT AND
 S115 - SMOOTH GRAY ENAMEL } EDGES ONLY } AFTER ENGRAVING

REF: M510591

LANGER

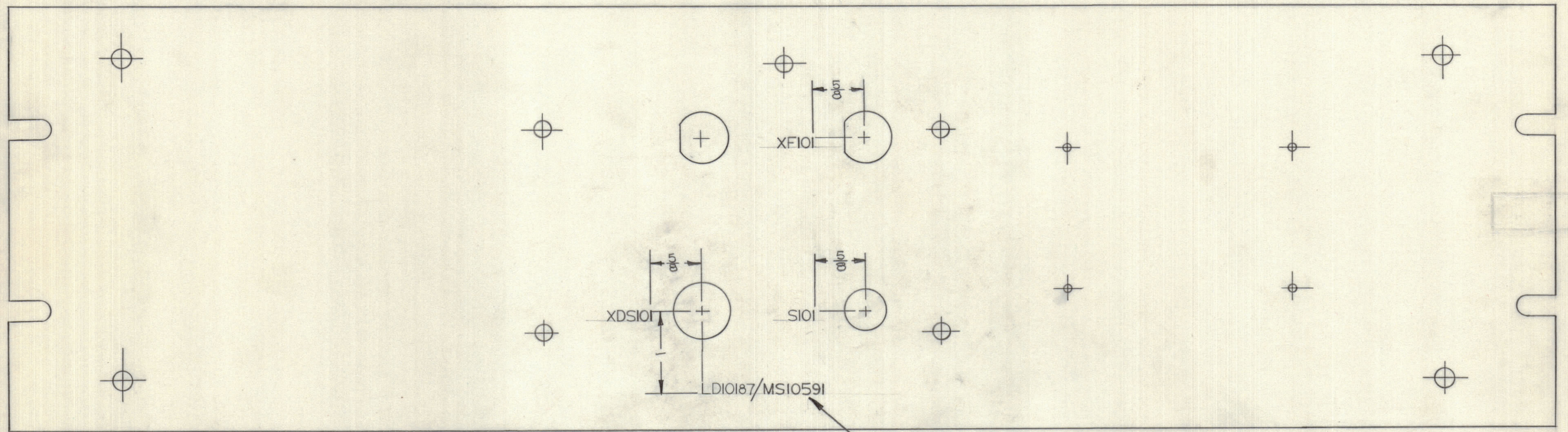
STOCK SIZE		TMC (Canada) LIMITED OTTAWA ONTARIO	
MATERIAL		ENGRAVING DETAIL, FRONT PANEL, (FRONT VIEW)	
WEIGHT PER PC.		BN	
TYPE & TEMPER		DRAWN	ELEC. DES. APP. (Signature)
HEAT TREAT. SPEC.		CHECKED	MECH. DES. APP.
FINISH & SPEC. NO.		FINAL APPROVAL (Signature)	
SEE NOTE		SHEET 1 of 2	
		LD10187 C	

P3-7A	024/65	A10371	SEP2/65
MODEL	PROJECT NO.	ASS'Y. NO.	DATE
USED ON			

TOLERANCES		SCALE: 1:1
ALL OTHERS	DEC. DIM. ± .05 FRAC. DIM. ± 1/64 ANGULAR DIM. ± 1/2°	DRILL, PUNCH, COMMERCIAL STOCK SIZES AND MANUFACTURERS TOLERANCES ARE NOT INCLUDED.

IF IT IS FOUND DESIRABLE TO CHANGE ANY TOLERANCE OR OTHER DETAIL SPECIFIED ON THIS DRAWING NOTIFY THE PURCHASER PROMPTLY.		DIMENSIONS IN INCHES UNLESS OTHERWISE SPECIFIED					
MAXIMUM ALLOWABLE TOLERANCES HAVE BEEN DETERMINED AND DEVIATIONS WILL BE CAUSE FOR REJECTION. REMOVE ALL BURRS AND SHARP EDGES.							
ISSUE	ITEM	CHANGED FROM	DATE	CN. NO.	DRAFTS	CHECKER	ENG. APP.
C		REDRAWN	MAY 19/66		GM	<i>[Signature]</i>	<i>[Signature]</i>

REQ.	ITEM	PART NO.	DESCRIPTION	SYMBOL
------	------	----------	-------------	--------



TMC PART NO. C/W LATEST REV. LETTER.

MARKING PROCESS: AS PER TMC SPECIFICATION S-727.
 LETTERING: 1/8 HIGH BLACK GOTHIC, LOCATED AS SHOWN.

TOLERANCES		SCALE: 1:1
ALL OTHERS	DEC. DIM. ± .005 FRAC. DIM. ± 1/64 ANGULAR DIM. ± 1/2°	DRILL, PUNCH, COMMERCIAL STOCK SIZES AND MANUFACTURERS TOLERANCES ARE NOT INCLUDED.

PS-7A	024/65	A10371	SEP 2/65
MODEL	PROJECT NO.	ASS'Y. NO.	DATE

STOCK SIZE		TMC (Canada) LIMITED OTTAWA ONTARIO	
MATERIAL		LETTERING DETAIL	
WEIGHT PER PC.		FRONT PANEL, (REAR VIEW)	
TYPE & TEMPER		BN	
HEAT TREAT. SPEC.		DRAWN	ELEC. DES. APP. MECH. DES. APP.
FINISH & SPEC. NO.		CHECKED	FINAL APPROVAL
		SHEET 2 of 2	
		LD10187 C	