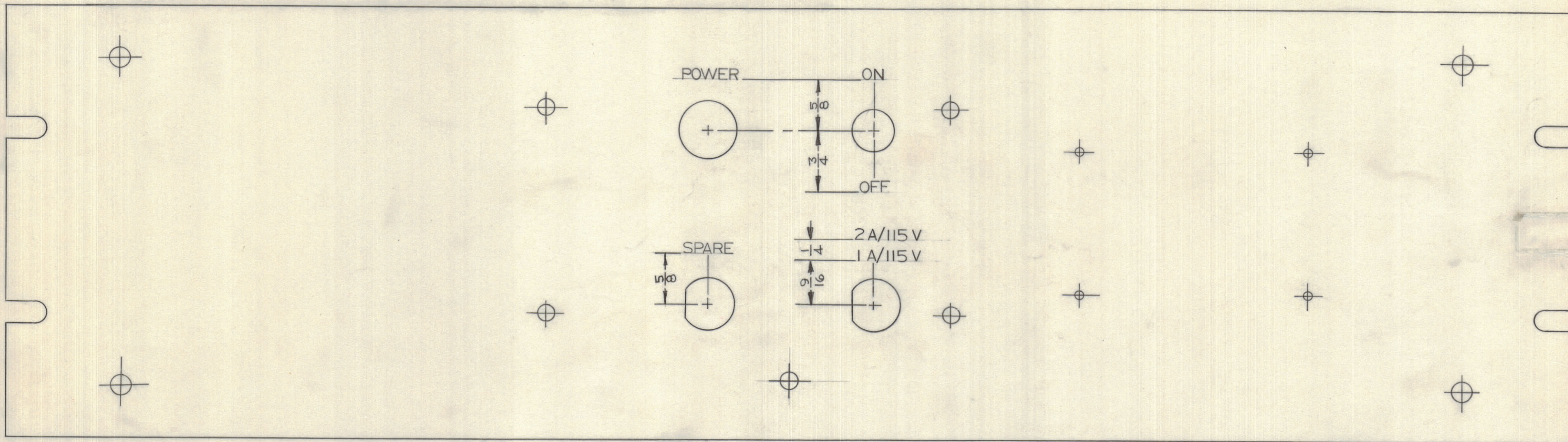


IF IT IS FOUND DESIRABLE TO CHANGE ANY TOLERANCE OR OTHER DETAIL SPECIFIED ON THIS DRAWING NOTIFY THE PURCHASER PROMPTLY.		DIMENSIONS IN INCHES UNLESS OTHERWISE SPECIFIED					
MAXIMUM ALLOWABLE TOLERANCES HAVE BEEN DETERMINED AND DEVIATIONS WILL BE CAUSE FOR REJECTION. REMOVE ALL BURRS AND SHARP EDGES.							
ISSUE	ITEM	CHANGED FROM	DATE	CN. NO.	DRAFTS	CHECKER	ENG. APP.
C		REDRAWN	MAY 19/66		GM	Z. Lee	(Signature)

REQ.	ITEM	PART NO.	DESCRIPTION	SYMBOL
------	------	----------	-------------	--------



LETTERING 1/8 HIGH GOTHIC WHITE FILLED
 WIDTH OF STROKE .020
 DEPTH OF STROKE .020

FINISH NOTES:

S114 - ZINC CHROMATE PRIMER } FRONT AND
 S115 - SMOOTH GRAY ENAMEL } EDGES ONLY } AFTER ENGRAVING

REF: M510591

LANGER

STOCK SIZE		TMC (Canada) LIMITED	
MATERIAL		OTTAWA ONTARIO	
WEIGHT PER PC.		ENGRAVING DETAIL,	
TYPE & TEMPER		FRONT PANEL, (FRONT VIEW)	
HEAT TREAT. SPEC.		BN	
DRAWN		ELEC. DES. APP.	MECH. DES. APP.
CHECKED		FINAL APPROVAL	
SEE NOTE		SHEET 1 of 2	LD10187 C
FINISH & SPEC. NO.			

PB-7A	024/65	A10371	SEP2/65
MODEL	PROJECT NO.	ASS'Y. NO.	DATE
USED ON			

TOLERANCES		SCALE: 1:1
ALL OTHERS	DEC. DIM. ± .05 FRAC. DIM. ± 1/64 ANGULAR DIM. ± 1/2° XXXX = .005	DRILL, PUNCH, COMMERCIAL STOCK SIZES AND MANUFACTURERS TOLERANCES ARE NOT INCLUDED.