

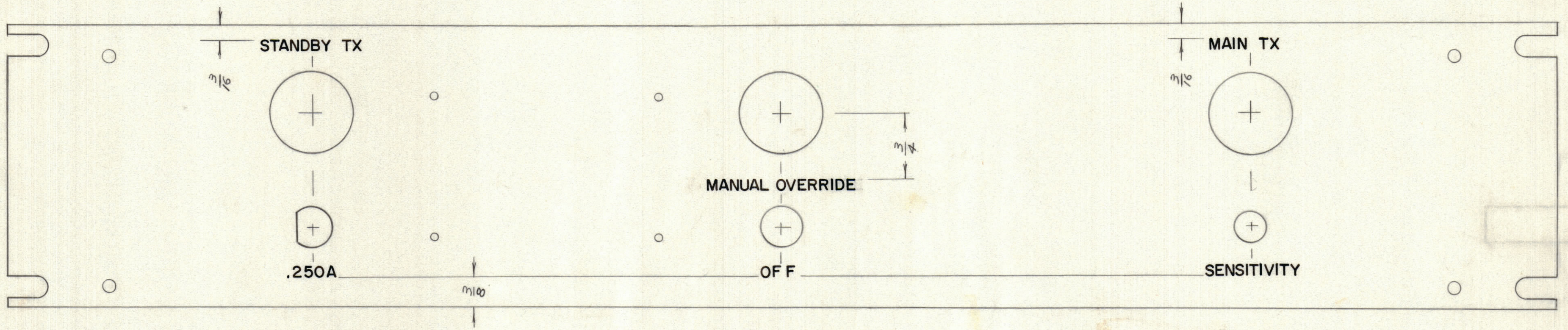
IF IT IS FOUND DESIRABLE TO CHANGE ANY TOLERANCE OR OTHER DETAIL SPECIFIED ON THIS DRAWING NOTIFY THE PURCHASER PROMPTLY.

MAXIMUM ALLOWABLE TOLERANCES HAVE BEEN DETERMINED AND DEVIATIONS WILL BE CAUSE FOR REJECTION. REMOVE ALL BURRS AND SHARP EDGES.

DIMENSIONS IN INCHES UNLESS OTHERWISE SPECIFIED

ISSUE	ITEM	CHANGED FROM	DATE	CN. NO.	DRAFTS	CHECKER	ENG. APP.

REQ.	ITEM	PART NO.	DESCRIPTION	SYMBOL



LETTERING: ENGRAVED,  $1/8$  HIGH WHITE GOTHIC, LOCATED AS SHOWN

REF: MS10570

TOLERANCES		SCALE:
ALL OTHERS	DEC. DIM. $\pm$ FRAC. DIM. $\pm$ ANGULAR DIM. $\pm$	DRILL, PUNCH, COMMERCIAL STOCK SIZES AND MANUFACTURERS TOLERANCES ARE NOT INCLUDED.

MODEL	PROJECT NO.	ASSY. NO.	DATE
		A10350	13-6-64

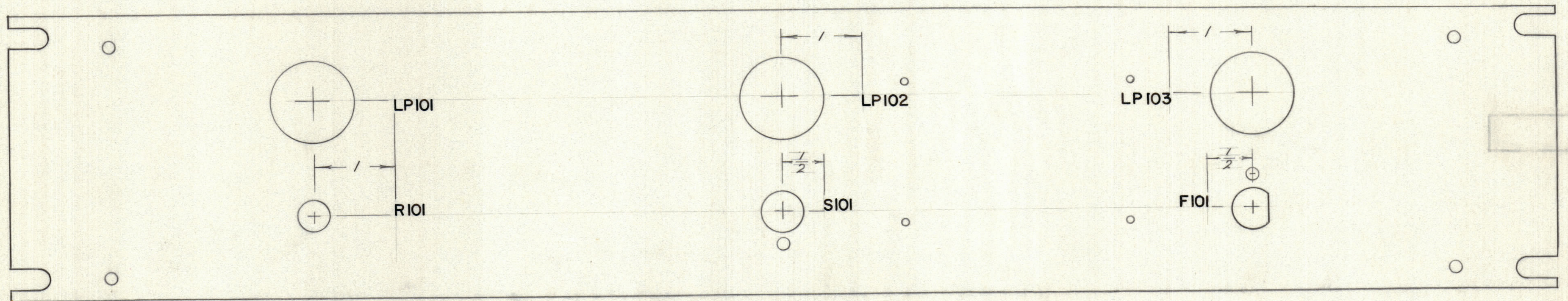
USED ON

STOCK SIZE		TMC (Canada) LIMITED OTTAWA ONTARIO	
MATERIAL		ENGRAVING FRONT OF FRONT PANEL	
WEIGHT PER PC.		R. DES DRAWN	
TYPE & TEMPER		MECH. DES. APP. <i>a.j.</i>	
HEAT TREAT. SPEC.		CHECKED <i>h.w.</i> FINAL APPROVAL	
FINISH & SPEC. NO.		LD10177 SHT 1 OF 2	



IF IT IS FOUND DESIRABLE TO CHANGE ANY TOLERANCE OR OTHER DETAIL SPECIFIED ON THIS DRAWING NOTIFY THE PURCHASER PROMPTLY.		DIMENSIONS IN INCHES UNLESS OTHERWISE SPECIFIED					
MAXIMUM ALLOWABLE TOLERANCES HAVE BEEN DETERMINED AND DEVIATIONS WILL BE CAUSE FOR REJECTION. REMOVE ALL BURRS AND SHARP EDGES.							
ISSUE	ITEM	CHANGED FROM	DATE	CN. NO.	DRAFTS	CHECKER	ENG. APP.

REQ.	ITEM	PART NO.	DESCRIPTION	SYMBOL
------	------	----------	-------------	--------



LETTERING: 1/8 HIGH BLACK GOTHIC, LOCATED AS SHOWN  
 MARKING PROCESS: AS PER TMC SPEC. S727

REF: MS10570

TOLERANCES		SCALE:
ALL OTHERS	DEC. DIM. ± FRAC. DIM. ± ANGULAR DIM. ±	DRILL, PUNCH, COMMERCIAL STOCK SIZES AND MANUFACTURERS TOLERANCES ARE NOT INCLUDED.

MODEL	PROJECT NO.	ASS'Y. NO.	DATE
		A 10350	13-6-64
USED ON			

STOCK SIZE		<b>TMC (Canada) LIMITED</b> OTTAWA ONTARIO	
MATERIAL		STAMPING BACK OF FRONT PANEL	
WEIGHT PER PC.			
TYPE & TEMPER		R DES.	MECH. DES. APP.
		DRAWN	ELEC. DES. APP.
HEAT TREAT. SPEC.		FINAL APPROVAL	
		CHECKED	
FINISH & SPEC. NO.		LD10177 SHT. 2 OF 2	