

IF IT IS FOUND DESIRABLE TO CHANGE ANY TOLERANCE OR OTHER DETAIL SPECIFIED ON THIS DRAWING NOTIFY THE PURCHASER PROMPTLY.

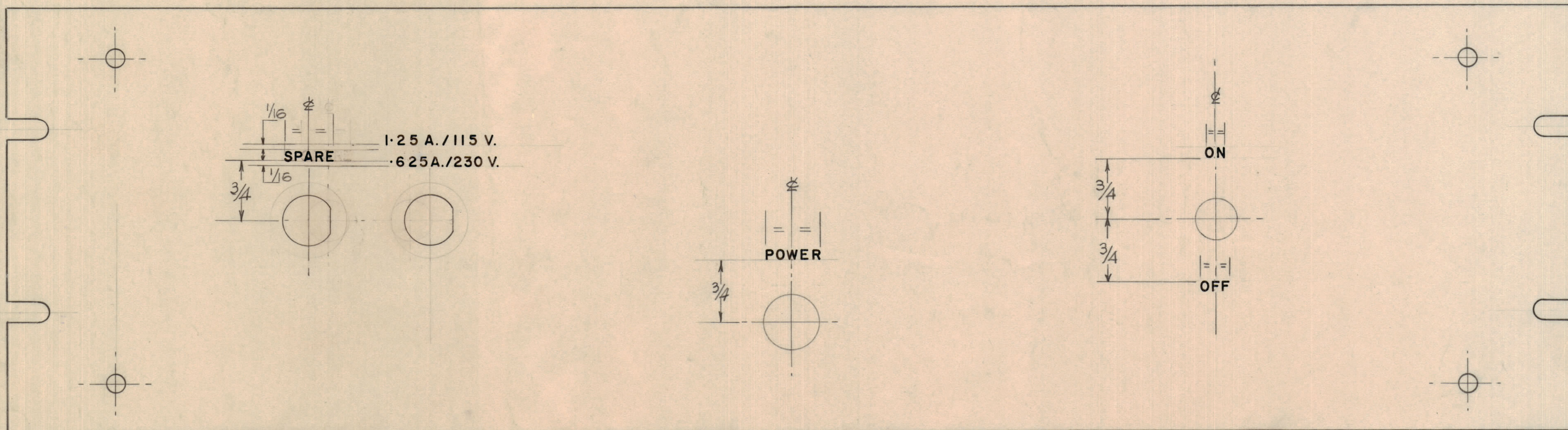
MAXIMUM ALLOWABLE TOLERANCES HAVE BEEN DETERMINED AND DEVIATIONS WILL BE CAUSE FOR REJECTION. REMOVE ALL BURRS AND SHARP EDGES

**NOTICE TO PERSONS RECEIVING THIS DRAWING**

THE TECHNICAL MATERIEL CORPORATION claims proprietary right in the material disclosed hereon. This drawing is issued in confidence for engineering information only and may not be reproduced or used to manufacture anything shown hereon without permission from THE TECHNICAL MATERIEL CORPORATION to the user. This drawing is loaned for mutual assistance and is subject to recall at any time.

Property of:

THE TECHNICAL MATERIEL CORPORATION  
MAMARONECK, NEW YORK



A LD-10125

LETTERING TO BE 1/8" HIGH & WHITE FILLED

A	1	1.25A/115V - .625A/230V & POWER (ENGRAVING DETS ADDED) PS-7 WAS A-10287	29 SEPT 1960		WHD	LSMS	<i>h.k.</i>
ISSUE	ITEM	CHANGED FROM	DATE	CN. NO.	DRAFTS	CHECKER	ENG. APP.
TOLERANCES		SCALE: 1:1					
ALL OTHERS	DEC. DIM. ± FRAC. DIM. ± ANGULAR DIM. ±	DRILL, PUNCH, COMMERCIAL STOCK SIZES AND MANUFACTURERS TOLERANCES ARE NOT INCLUDED.					

PS-7	CE-5107	19.AUGUST.1960
MODEL	PROJECT No.	ASS'Y. No.
USED ON		

REQ.	ITEM	PART No.	DESCRIPTION	SYMBOL
			<b>TMC (Canada) LIMITED</b> OTTAWA ONTARIO	
STOCK SIZE			<b>ENGRAVING DETAILS</b>	
MATERIAL			<b>FRONT PANEL-POWER SUPPLY</b>	
WEIGHT PER PC.			W.H. DAVISON	
TYPE & TEMPER			<i>W.H.D.</i>	
DRAWN			ELEC. DES. APP.	MECH. DES. APP.
HEAT TREAT. SPEC.			<i>LSMS</i>	<i>h.k.</i>
CHECKED			FINAL APPROVAL	
FINISH & SPEC. No.			<b>LD-10125</b>	<b>A</b>