

IF IT IS FOUND DESIRABLE TO CHANGE ANY TOLERANCE OR OTHER DETAIL SPECIFIED ON THIS DRAWING NOTIFY THE PURCHASER PROMPTLY.

LD-10013

MAXIMUM ALLOWABLE TOLERANCES HAVE BEEN DETERMINED AND DEVIATIONS WILL BE CAUSE FOR REJECTION. REMOVE ALL BURRS AND SHARP EDGES

USED ON

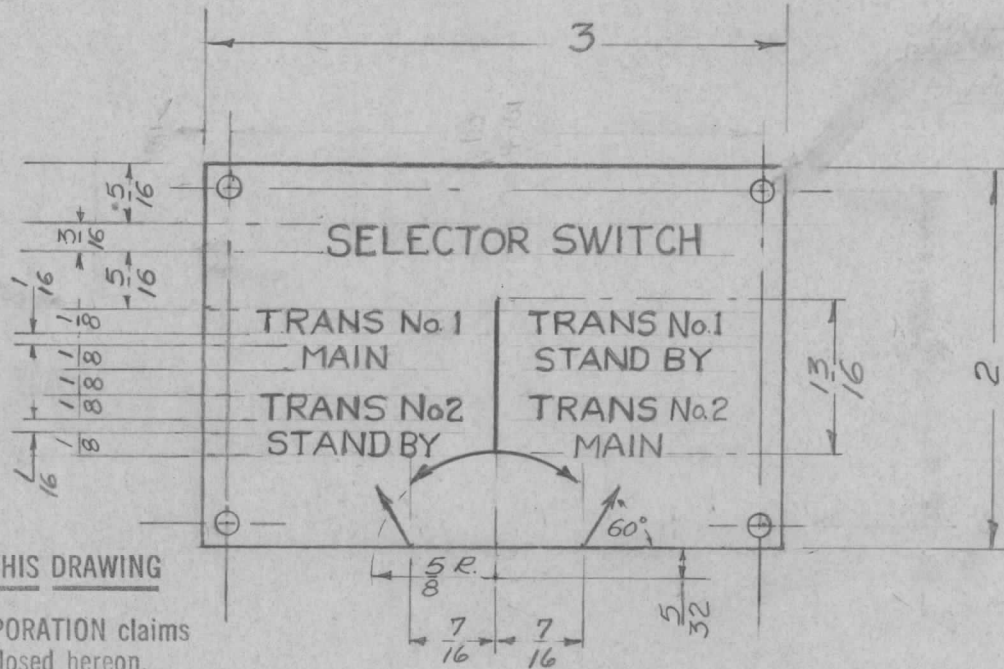
MODEL

PROJECT NO.

ASS'Y. NO.

DATE

A-10066 2/11/55



LETTERING ENGRAVED - BLACK FILL

NOTICE TO PERSONS RECEIVING THIS DRAWING

THE TECHNICAL MATERIEL CORPORATION claims proprietary right in the material disclosed hereon. This drawing is issued in confidence for engineering information only and may not be reproduced or used to manufacture anything shown hereon without permission from THE TECHNICAL MATERIEL CORPORATION to the user. This drawing is loaned for mutual assistance and is subject to recall at any time.

Property of:

THE TECHNICAL MATERIEL CORPORATION
MAMARONECK, NEW YORK

| REQ. | ITEM | PART NO. | DESCRIPTION | SYMBOL |
|------|------|--------------------|------------------------------|---------------------------------|
| | | | TMC (Canada) LIMITED | |
| | | STOCK SIZE | OTTAWA | ONTARIO |
| | | | INDICATOR PLATE ENGRAVING | |
| | | MATERIAL | WEIGHT PER PC. | |
| | | | TEMPR. PF. SWITCHING UNIT | |
| | | TYPE & TEMPER | L. MARION | |
| | | | DRAWN | ELEC. DES. APP. MECH. DES. APP. |
| | | HEAT TREAT. SPEC. | <i>Wad</i> FINAL APPROVAL | |
| | | FINISH & SPEC. NO. | LD-10013 | |

| ISSUE | ITEM | CHANGED FROM | DATE | CN. NO. | DRAFTS | CHECKER | ENG. APP. |
|------------|----------------|--------------|---|---------|--------|---------|-----------|
| TOLERANCES | | | SCALE | | | | |
| ALL OTHERS | DEC. DIM. ± | FRAC. DIM. ± | DRILL, PUNCH, COMMERCIAL STOCK SIZES AND MANUFACTURERS TOLERANCES ARE NOT INCLUDED. | | | | |
| | ANGULAR DIM. ± | | | | | | |

IF IT IS FOUND DESIRABLE TO CHANGE ANY TOLERANCE OR OTHER DETAIL SPECIFIED ON THIS DRAWING NOTIFY THE PURCHASER PROMPTLY.

LD-10015

MAXIMUM ALLOWABLE TOLERANCES HAVE BEEN DETERMINED AND DEVIATIONS WILL BE CAUSE FOR REJECTION. REMOVE ALL BURRS AND SHARP EDGES

USED ON

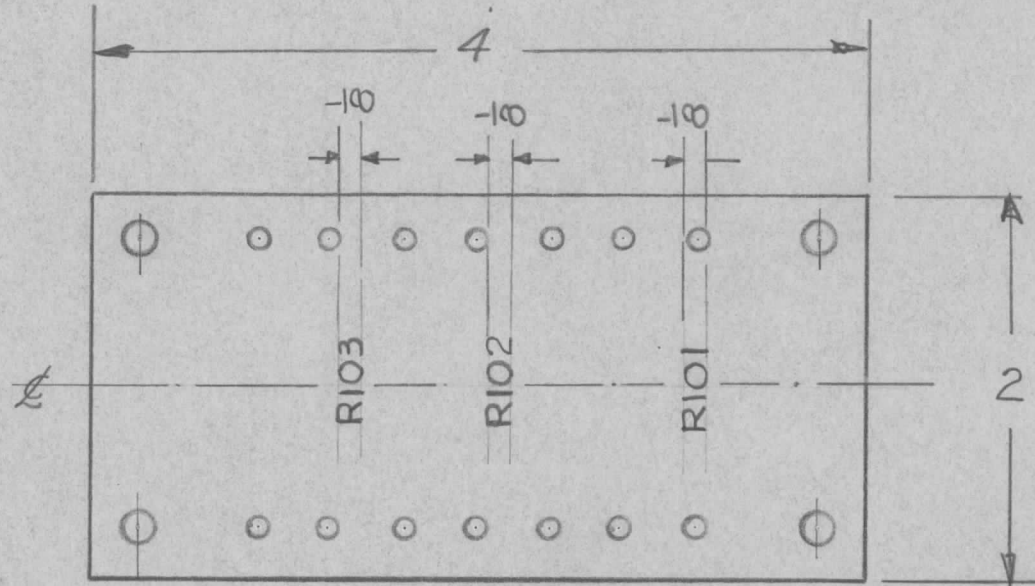
MODEL

PROJECT NO.

ASS'Y. NO.

DATE

A-10045 15-11-55



NOTICE TO PERSONS RECEIVING THIS DRAWING

THE TECHNICAL MATERIEL CORPORATION claims proprietary right in the material disclosed hereon. This drawing is issued in confidence for engineering information only and may not be reproduced or used to manufacture anything shown hereon without permission from THE TECHNICAL MATERIEL CORPORATION to the user. This drawing is loaned for mutual assistance and is subject to recall at any time.

Property of:

THE TECHNICAL MATERIEL CORPORATION
MAMARONECK, NEW YORK

LETTERS & NUMERALS - 1/8 BLACK COATED WITH - S113 - FUNGUS RESISTANT VARNISH

| REQ. | ITEM | PART NO. | DESCRIPTION | SYMBOL |
|------|------|--------------------|---|---------------------------------|
| | | | TMC (Canada) LIMITED OTTAWA ONTARIO | |
| | | STOCK SIZE | LETTERING - MTG PANEL (RESISTOR) | |
| | | MATERIAL | TRMTR. RF SWITCHING UNIT | |
| | | WEIGHT PER PC. | E.W.B.G. | |
| | | TYPE & TEMPER | DRAWN | ELEC. DES. APP. MECH. DES. APP. |
| | | HEAT TREAT. SPEC. | CHECKED | FINAL APPROVAL |
| | | FINISH & SPEC. NO. | | LD-10015 |

| ISSUE | ITEM | CHANGED FROM | DATE | CN. NO. | DRAFTS | CHECKER | ENG. APP. |
|------------|---|--------------|---|---------|--------|---------|-----------|
| TOLERANCES | | | SCALE | | | | |
| ALL OTHERS | DEC. DIM. ± FRAC. DIM. ± ANGULAR DIM. ± | | DRILL, PUNCH, COMMERCIAL STOCK SIZES AND MANUFACTURERS TOLERANCES ARE NOT INCLUDED. | | | | |

IF IT IS FOUND DESIRABLE TO CHANGE ANY TOLERANCE OR OTHER DETAIL SPECIFIED ON THIS DRAWING NOTIFY THE PURCHASER PROMPTLY.

LD-10017

MAXIMUM ALLOWABLE TOLERANCES HAVE BEEN DETERMINED AND DEVIATIONS WILL BE CAUSE FOR REJECTION. REMOVE ALL BURRS AND SHARP EDGES

USED ON

| | | | |
|-------|-------------|------------|------|
| MODEL | PROJECT NO. | ASS'Y. NO. | DATE |
|-------|-------------|------------|------|

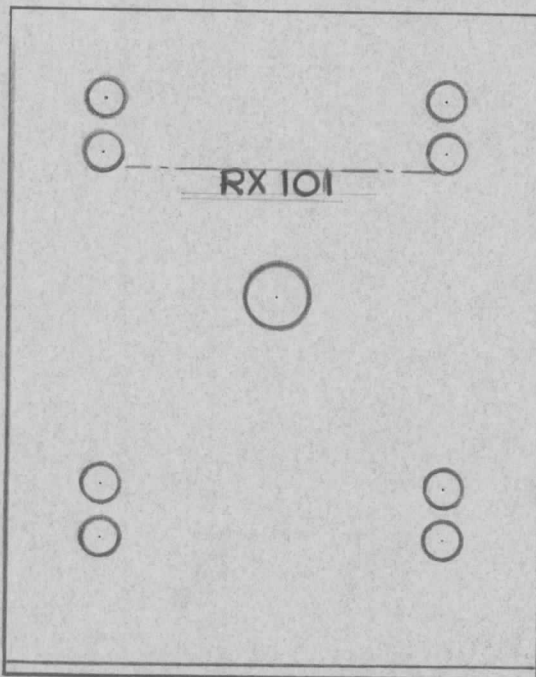
A-10068 15-11-55

NOTICE TO PERSONS RECEIVING THIS DRAWING

THE TECHNICAL MATERIEL CORPORATION claims proprietary right in the material disclosed hereon. This drawing is issued in confidence for engineering information only and may not be reproduced or used to manufacture anything shown hereon without permission from THE TECHNICAL MATERIEL CORPORATION to the user. This drawing is loaned for mutual assistance and is subject to recall at any time.

Property of:

THE TECHNICAL MATERIEL CORPORATION
MAMARONECK, NEW YORK



LETTERS & NUMERALS $\frac{1}{8}$ BLACK
COATED WITH S113 FUNGUS
RESISTAN VARNISH

| REQ. | ITEM | PART NO. | DESCRIPTION | SYMBOL |
|------|------|--------------------|---|---------------------------------|
| | | | TMC (Canada) LIMITED OTTAWA ONTARIO | |
| | | STOCK SIZE | LETTERING-BRACKET RX 101 | |
| | | MATERIAL | WEIGHT PER PC. | TRMTR. SWITCHING UNIT |
| | | TYPE & TEMPER | E.W.B.G. | |
| | | HEAT TREAT. SPEC. | DRAWN | ELEC. DES. APP. MECH. DES. APP. |
| | | FINISH & SPEC. NO. | CHECKED | FINAL APPROVAL <i>Waa</i> |
| | | | | LD-10017 |

| ISSUE | ITEM | CHANGED FROM | DATE | CN. NO. | DRAFTS | CHECKER | ENG. APP. |
|-------|------|--------------|------|---------|--------|---------|-----------|
|-------|------|--------------|------|---------|--------|---------|-----------|

TOLERANCES

SCALE

ALL OTHERS

DEC. DIM. \pm
FRAC. DIM. \pm
ANGULAR DIM. \pm

DRILL, PUNCH, COMMERCIAL STOCK
SIZES AND MANUFACTURERS
TOLERANCES ARE NOT INCLUDED.

IF IT IS FOUND DESIRABLE TO CHANGE ANY TOLERANCE OR OTHER DETAIL SPECIFIED ON THIS DRAWING NOTIFY THE PURCHASER PROMPTLY.

LD-10018

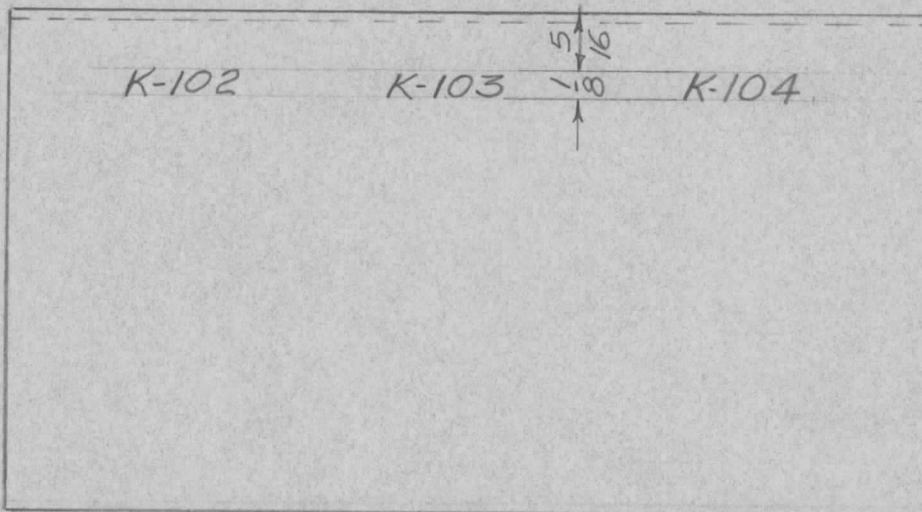
MAXIMUM ALLOWABLE TOLERANCES HAVE BEEN DETERMINED AND DEVIATIONS WILL BE CAUSE FOR REJECTION. REMOVE ALL BURRS AND SHARP EDGES

USED ON

| MODEL | PROJECT NO. | ASS'Y. NO. | DATE |
|-------|-------------|------------|------|
|-------|-------------|------------|------|

A-10070 15/11/55

FRONT VIEW OF RELAY COVER.



NOTE: ALL LETTERS AND NUMERALS TO BE BLACK, COATED WITH S-113 FUNGUS RESISTANT VARNISH.

| REQ. | ITEM | PART NO. | DESCRIPTION | SYMBOL |
|------|------|----------|-----------------------------|---------------------------------|
| | | | TMC (Canada) LIMITED | |
| | | | OTTAWA ONTARIO | |
| | | | RELAY COVER LETTERING | |
| | | | TEMTR. R.F. SWITCHING UNIT | |
| | | | L. MAEION | |
| | | | DRAWN | ELEC. DES. APP. MECH. DES. APP. |
| | | | CHECKED | FINAL APPROVAL |
| | | | | LD-10018 |

| ISSUE | ITEM | CHANGED FROM | DATE | CN. NO. | DRAFTS | CHECKER | ENG. APP. |
|-------|------|--------------|------|---------|--------|---------|-----------|
| | | | | | | | |

| | | |
|------------|---|---|
| TOLERANCES | | SCALE |
| ALL OTHERS | DEC. DIM. ± FRAC. DIM. ± ANGULAR DIM. ± | DRILL, PUNCH, COMMERCIAL STOCK SIZES AND MANUFACTURERS TOLERANCES ARE NOT INCLUDED. |

IF IT IS FOUND DESIRABLE TO CHANGE ANY TOLERANCE OR OTHER DETAIL SPECIFIED ON THIS DRAWING NOTIFY THE PURCHASER PROMPTLY.

LD-10019

MAXIMUM ALLOWABLE TOLERANCES HAVE BEEN DETERMINED AND DEVIATIONS WILL BE CAUSE FOR REJECTION. REMOVE ALL BURRS AND SHARP EDGES

USED ON

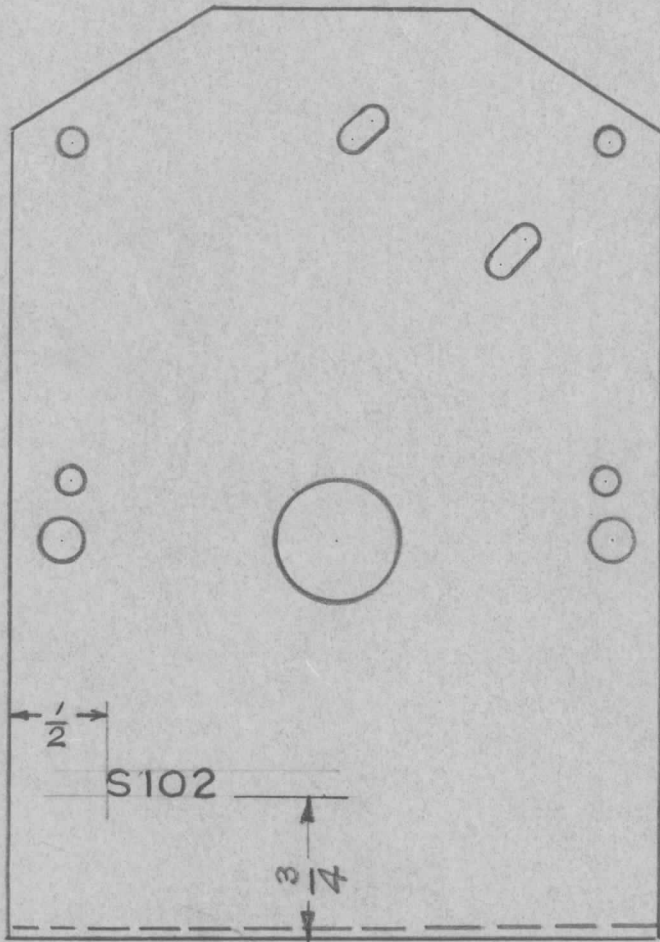
MODEL

PROJECT NO.

ASS'Y. NO.

DATE

A-10066 21/11/55



FRONT VIEW

NOTICE TO PERSONS RECEIVING THIS DRAWING

THE TECHNICAL MATERIEL CORPORATION claims proprietary right in the material disclosed hereon. This drawing is issued in confidence for engineering information only and may not be reproduced or used to manufacture anything shown hereon without permission from THE TECHNICAL MATERIEL CORPORATION to the user. This drawing is loaned for mutual assistance and is subject to recall at any time.

Property of:

THE TECHNICAL MATERIEL CORPORATION
MAMARONECK, NEW YORK

| REQ. | ITEM | PART NO. | DESCRIPTION | SYMBOL |
|------|------|--------------------|---|---------------------------------|
| | | | TMC (Canada) LIMITED OTTAWA ONTARIO | |
| | | STOCK SIZE | | |
| | | | LETTERING-BRACKET SELECTOR MTG | |
| | | MATERIAL | TRMTR. RF SWITCHING UNIT | |
| | | WEIGHT PER PC. | | |
| | | TYPE & TEMPER | | |
| | | | DRAWN | ELEC. DES. APP. MECH. DES. APP. |
| | | | | <i>load</i> |
| | | HEAT TREAT. SPEC. | CHECKED | FINAL APPROVAL |
| | | | | LD-10019 |
| | | FINISH & SPEC. NO. | | |

| ISSUE | ITEM | CHANGED FROM | DATE | CN. NO. | DRAFTS | CHECKER | ENG. APP. |
|------------|----------------|--------------|---|---------|--------|---------|-----------|
| | | | | | | | |
| TOLERANCES | | | SCALE <i>FULL SIZE</i> | | | | |
| ALL OTHERS | DEC. DIM. ± | FRAC. DIM. ± | DRILL, PUNCH, COMMERCIAL STOCK SIZES AND MANUFACTURERS TOLERANCES ARE NOT INCLUDED. | | | | |
| | ANGULAR DIM. ± | | | | | | |

IF IT IS FOUND DESIRABLE TO CHANGE ANY TOLERANCE OR OTHER DETAIL SPECIFIED ON THIS DRAWING NOTIFY THE PURCHASER PROMPTLY.

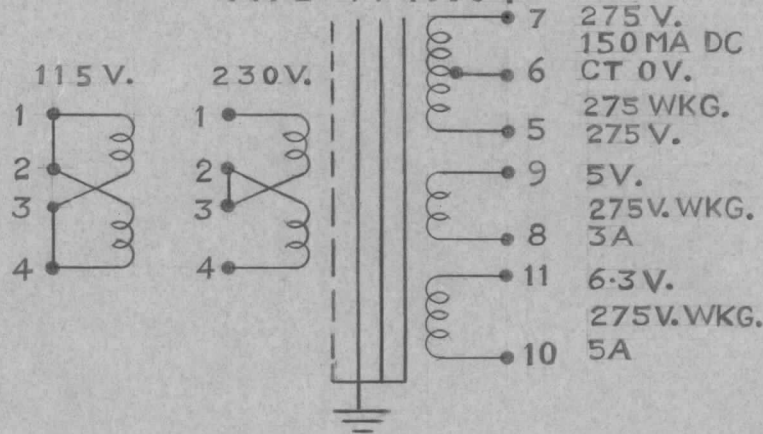
LD-10020

MAXIMUM ALLOWABLE TOLERANCES HAVE BEEN DETERMINED AND DEVIATIONS WILL BE CAUSE FOR REJECTION. REMOVE ALL BURRS AND SHARP EDGES

USED ON

| MODEL | PROJECT NO. | ASS'Y. NO. | DATE |
|---------|-------------|------------|---------|
| AMC 6-2 | | | 21/2/56 |

T. M. C. LIMITED
TYPE TF 1000 4



NOTICE TO PERSONS RECEIVING THIS DRAWING

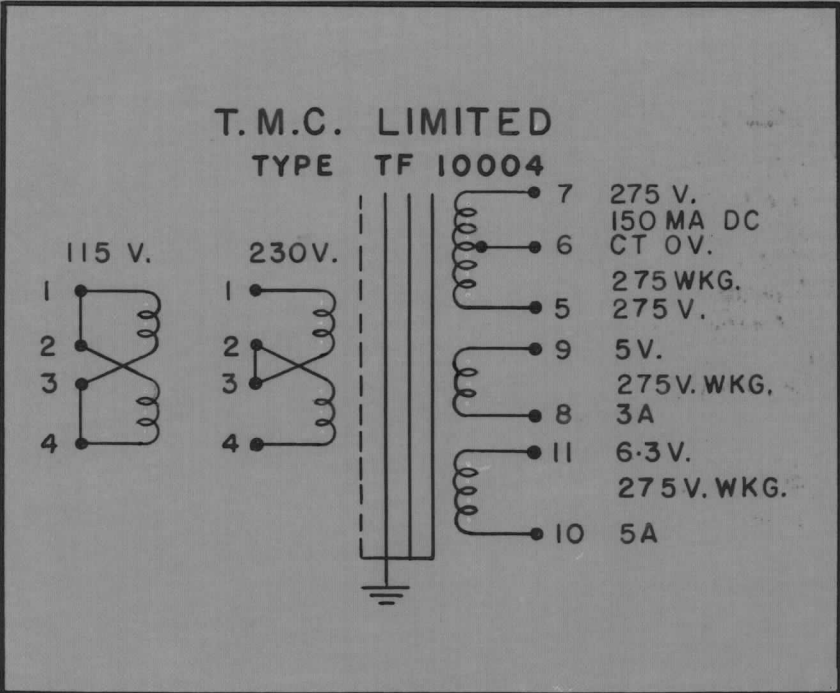
THE TECHNICAL MATERIEL CORPORATION claims proprietary right in the material disclosed herein. This drawing is issued in confidence for engineering information only and may not be reproduced or used to manufacture anything shown hereon without permission from THE TECHNICAL MATERIEL CORPORATION to the user. This drawing is loaned for mutual assistance and is subject to recall at any time.

Property of:
THE TECHNICAL MATERIEL CORPORATION
MAMARONECK, NEW YORK

REF. LD-10011

| REQ. | ITEM | PART NO. | DESCRIPTION | SYMBOL |
|------|------|----------|-----------------------------|---------------------------------|
| | | | TMC (Canada) LIMITED | |
| | | | OTTAWA ONTARIO | |
| | | | LETTERING - RUBBER STAMP | |
| | | | FOR POWER TRANSFORMER | |
| | | | L. MARION, <i>W. J.</i> | |
| | | | DRAWN | ELEC. DES. APP. MECH. DES. APP. |
| | | | CHECKED | FINAL APPROVAL |
| | | | | LD-10020 |

| ISSUE | ITEM | CHANGED FROM | DATE | CN. NO. | DRAFTS | CHECKER | ENG. APP. |
|---|------|--------------|------|---|--------|---------|-----------|
| TOLERANCES | | | | | | | |
| ALL OTHERS | | | | SCALE FULL SIZE | | | |
| DEC. DIM. \pm FRAC. DIM. \pm ANGULAR DIM. \pm | | | | DRILL, PUNCH, COMMERCIAL STOCK SIZES AND MANUFACTURERS TOLERANCES ARE NOT INCLUDED. | | | |



NOTICE TO PERSONS RECEIVING THIS DRAWING

THE TECHNICAL MATERIEL CORPORATION claims proprietary right in the material disclosed hereon. This drawing is issued in confidence for engineering information only and may not be reproduced or used to manufacture anything shown hereon without permission from THE TECHNICAL MATERIEL CORPORATION to the user. This drawing is loaned for mutual assistance and is subject to recall at any time.

Property of
THE TECHNICAL MATERIEL CORPORATION
MAMARONECK, NEW YORK

DUPLICATE

| | | |
|---------------------------------|---------------|-----------------|
| TMC (Canada) LIMITED | | |
| OTTAWA | | ONTARIO |
| LETTERING - RUBBER STAMP | | |
| FOR POWER TRANSFORMER | | |
| L. MARION. | <i>N.F.J.</i> | |
| DRAWN | | |
| | <i>W.A.G.</i> | |
| | | LD-10020 |

IF IT IS FOUND DESIRABLE TO CHANGE ANY TOLERANCE OR OTHER DETAIL SPECIFIED ON THIS DRAWING NOTIFY THE PURCHASER PROMPTLY.

LD-10021

MAXIMUM ALLOWABLE TOLERANCES HAVE BEEN DETERMINED AND DEVIATIONS WILL BE CAUSE FOR REJECTION. REMOVE ALL BURRS AND SHARP EDGES

USED ON

MODEL

PROJECT NO.

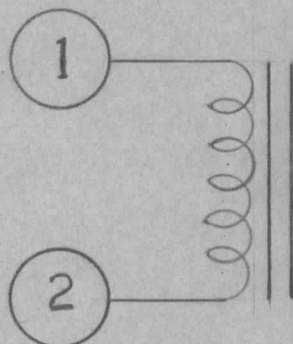
ASS'Y. NO.

DATE

AMC 6-2

12/3/56

TMC LIMITED
TYPE TF 10001



10 HY
@ 200MA DC
30V. 60 CPS
85 OHMS DC
275V. WKG.

NOTICE TO PERSONS RECEIVING THIS DRAWING

THE TECHNICAL MATERIEL CORPORATION claims proprietary right in the material disclosed hereon. This drawing is issued in confidence for engineering information only and may not be reproduced or used to manufacture anything shown hereon without permission from THE TECHNICAL MATERIEL CORPORATION to the user. This drawing is loaned for mutual assistance and is subject to recall at any time.

Property of:

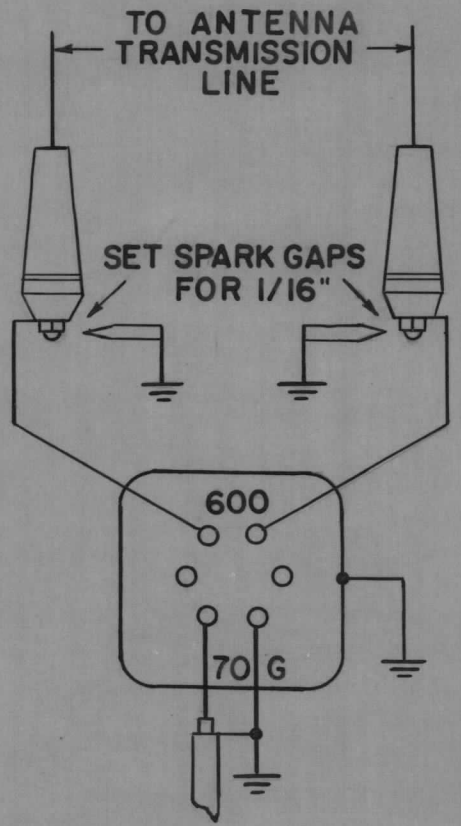
THE TECHNICAL MATERIEL CORPORATION
MAMARONECK, NEW YORK

REF. LD-10011

| REQ. | ITEM | PART NO. | DESCRIPTION | SYMBOL |
|------|------|----------|-----------------------------|-----------------|
| | | | TMC (Canada) LIMITED | |
| | | | OTTAWA ONTARIO | |
| | | | LETTERING - RUBBER STAMP | |
| | | | FOR TRANSFORMER | |
| | | | L. MARION | |
| | | | DRAWN | |
| | | | ELEC. DES. APP. | MECH. DES. APP. |
| | | | CHECKED | FINAL APPROVAL |
| | | | | LD-10021 |

| ISSUE | ITEM | CHANGED FROM | DATE | CN. NO. | DRAFTS | CHECKER | ENG. APP. |
|--------------------|---|--------------|---|---------|--------|---------|-----------|
| | | | | | | | |
| TOLERANCES | | | SCALE FULL SIZE | | | | |
| ALL OTHERS | DEC. DIM. \pm FRAC. DIM. \pm ANGULAR DIM. \pm | | DRILL, PUNCH, COMMERCIAL STOCK SIZES AND MANUFACTURERS TOLERANCES ARE NOT INCLUDED. | | | | |
| FINISH & SPEC. NO. | | | | | | | |

T.M.C. (CANADA) LTD.
OTTAWA, ONTARIO.
ANTENNA COUPLER
MODEL RAC --



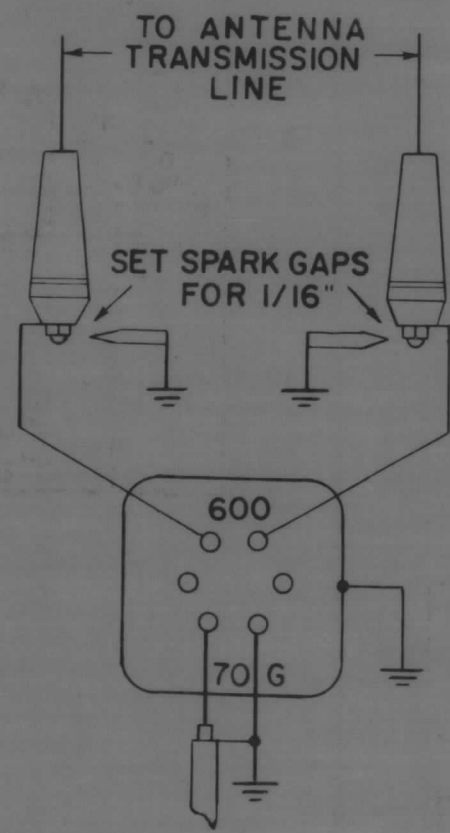
NOTICE TO PERSONS RECEIVING THIS DRAWING

THE TECHNICAL MATERIEL CORPORATION claims proprietary right in the material disclosed hereon. This drawing is issued in confidence for engineering information only and may not be reproduced or used to manufacture anything shown hereon without permission from THE TECHNICAL MATERIEL CORPORATION to the user. This drawing is loaned for mutual assistance and is subject to recall at any time.

Property of:
THE TECHNICAL MATERIEL CORPORATION
MAMARONECK, NEW YORK

| | | |
|-------------------------|---------------|----------|
| TMC (Canada) LIMITED | | |
| OTTAWA | | ONTARIO |
| WIRING DIAGRAM FOR | | |
| RHOMBIC ANTENNA COUPLER | | |
| L. MARION | <i>N.J.J.</i> | |
| DRAWN | | |
| <i>E.L.</i> | <i>W.A.A.</i> | |
| CHECKED | | |
| | | LD-10022 |

T.M.C. (CANADA) LTD.
OTTAWA, ONTARIO.
ANTENNA COUPLER
MODEL RAC ---



| | |
|-------------------------|---------------|
| T.M.C. (Canada) LIMITED | |
| OTTAWA | ONTARIO |
| WIRING DIAGRAM FOR | |
| RHOMBIC ANTENNA COUPLER | |
| L. MARION | <i>N.S.J.</i> |
| DRAWN | |
| <i>E.L.</i> | <i>W.A.A.</i> |
| CHECKED | |
| LD-10022 | |

IF IT IS FOUND DESIRABLE TO CHANGE ANY TOLERANCE OR OTHER DETAIL SPECIFIED ON THIS DRAWING NOTIFY THE PURCHASER PROMPTLY.

LD10055

MAXIMUM ALLOWABLE TOLERANCES HAVE BEEN DETERMINED AND DEVIATIONS WILL BE CAUSE FOR REJECTION. REMOVE ALL BURRS AND SHARP EDGES

USED ON

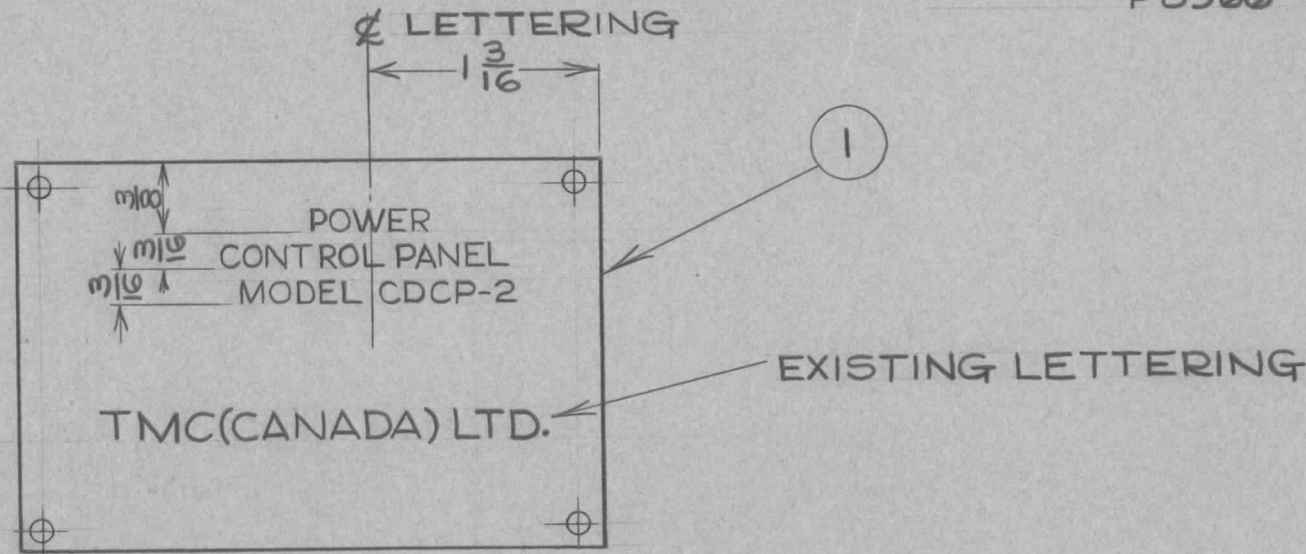
MODEL

PROJECT NO.

ASS'Y. NO.

DATE

P8966 A-10181 APR21/59



LETTERS TO BE ENGRAVED ON FRONT OF NAMEPLATE, 1/8" HIGH, WHITE-FILLED

| | | | | |
|------|------|--------------------|--------------------------------------|---------------------------------|
| 1 | 1 | NP10001 | NAMEPLATE-BLANK | |
| REQ. | ITEM | PART NO. | DESCRIPTION | SYMBOL |
| | | | TMC(Canada)LIMITED OTTAWA ONTARIO | |
| | | STOCK SIZE | NAMEPLATE ENGRAVING | |
| | | MATERIAL | DCM | |
| | | WEIGHT PER PC. | | |
| | | TYPE & TEMPER | DRAWN | ELEC. DES. APP. MECH. DES. APP. |
| | | HEAT TREAT. SPEC. | CHECKED | FINAL APPROVAL |
| | | FINISH & SPEC. NO. | | LD10055 |

| | | | | | | | |
|------------|---|--------------|---|---------|--------|---------|-----------|
| ISSUE | ITEM | CHANGED FROM | DATE | CN. NO. | DRAFTS | CHECKER | ENG. APP. |
| TOLERANCES | | | SCALE 1:1 | | | | |
| ALL OTHERS | DEC. DIM. ± FRAC. DIM. ± V64 ANGULAR DIM. ± | | DRILL, PUNCH, COMMERCIAL STOCK SIZES AND MANUFACTURERS TOLERANCES ARE NOT INCLUDED. | | | | |

IF IT IS FOUND DESIRABLE TO CHANGE ANY TOLERANCE OR OTHER DETAIL SPECIFIED ON THIS DRAWING NOTIFY THE PURCHASER PROMPTLY.

LD-10056

MAXIMUM ALLOWABLE TOLERANCES HAVE BEEN DETERMINED AND DEVIATIONS WILL BE CAUSE FOR REJECTION. REMOVE ALL BURRS AND SHARP EDGES

USED ON

MODEL

PROJECT NO.

ASS'Y. NO.

DATE

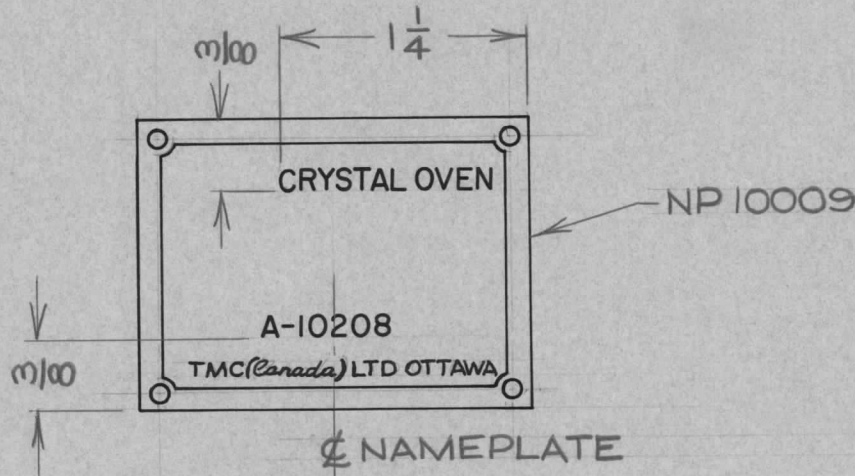
A-10208 MAY 5/59

NOTICE TO PERSONS RECEIVING THIS DRAWING

THE TECHNICAL MATERIEL CORPORATION claims proprietary right in the material disclosed hereon. This drawing is issued in confidence for engineering information only and may not be reproduced or used to manufacture anything shown hereon without permission from THE TECHNICAL MATERIEL CORPORATION to the user. This drawing is loaned for mutual assistance and is subject to recall at any time.

Property of:

THE TECHNICAL MATERIEL CORPORATION
MAMARONECK, NEW YORK



NOTE: LETTERING TO BE 1/8" HIGH, WHITE-FILLED.

| REQ. | ITEM | PART NO. | DESCRIPTION | SYMBOL |
|--------------------|------|----------|--|---------------------------------|
| 1 | 1 | NP10009 | NAMEPLATE | |
| STOCK SIZE | | | TMC(Canada) LIMITED OTTAWA ONTARIO | |
| MATERIAL | | | | |
| WEIGHT PER PC. | | | 10 POSITION XTAL OVEN | |
| TYPE & TEMPER | | | DCM | |
| HEAT TREAT. SPEC. | | | DRAWN | ELEC. DES. APP. MECH. DES. APP. |
| FINISH & SPEC. NO. | | | CHECKED | FINAL APPROVAL |
| | | | LD10056 | |

| ISSUE | ITEM | CHANGED FROM | DATE | CN. NO. | DRAFTS | CHECKER | ENG. APP. |
|------------|----------------|-------------------|---|---------|--------|---------|-----------|
| TOLERANCES | | | SCALE 1:1 | | | | |
| ALL OTHERS | DEC. DIM. ± | FRAC. DIM. ± 1/64 | DRILL, PUNCH, COMMERCIAL STOCK SIZES AND MANUFACTURERS TOLERANCES ARE NOT INCLUDED. | | | | |
| | ANGULAR DIM. ± | | | | | | |

IF IT IS FOUND DESIRABLE TO CHANGE ANY TOLERANCE OR OTHER DETAIL SPECIFIED ON THIS DRAWING NOTIFY THE PURCHASER PROMPTLY.

LD-10069

MAXIMUM ALLOWABLE TOLERANCES HAVE BEEN DETERMINED AND DEVIATIONS WILL BE CAUSE FOR REJECTION. REMOVE ALL BURRS AND SHARP EDGES

USED ON

MODEL

PROJECT NO.

ASS'Y. NO.

DATE

SEPT.18/59

INSP.
NO.1

INSP.
NO.2

INSP.
NO.3

INSP.
NO.4

INSP.
NO.5

NOTICE TO PERSONS RECEIVING THIS DRAWING

THE TECHNICAL MATERIEL CORPORATION claims proprietary right in the material disclosed hereon. This drawing is issued in confidence for engineering information only and may not be reproduced or used to manufacture anything shown hereon without permission from THE TECHNICAL MATERIEL CORPORATION to the user. This drawing is loaned for mutual assistance and is subject to recall at any time.

Property of:

THE TECHNICAL MATERIEL CORPORATION
MAMARONECK, NEW YORK

| REQ. | ITEM | PART NO. | DESCRIPTION | SYMBOL |
|-------------------------|------|----------|-----------------------------|---------------------------------|
| | | | TMC (Canada) LIMITED | |
| | | | OTTAWA ONTARIO | |
| STOCK SIZE | | | INSPECTION STAMPS | |
| MATERIAL WEIGHT PER PC. | | | | |
| TYPE & TEMPER | | | J.P.C. | <i>[Signature]</i> |
| | | | DRAWN | ELEC. DES. APP. MECH. DES. APP. |
| HEAT TREAT. SPEC. | | | CHECKED | FINAL APPROVAL |
| FINISH & SPEC. NO. | | | LD 10069 | |

| ISSUE | ITEM | CHANGED FROM | DATE | CN. NO. | DRAFTS | CHECKER | ENG. APP. |
|-------|------|--------------|------|---------|--------|---------|-----------|
| | | | | | | | |

| TOLERANCES | | SCALE |
|------------|---|---|
| ALL OTHERS | DEC. DIM. \pm FRAC. DIM. \pm ANGULAR DIM. \pm | DRILL, PUNCH, COMMERCIAL STOCK SIZES AND MANUFACTURERS TOLERANCES ARE NOT INCLUDED. |

IF IT IS FOUND DESIRABLE TO CHANGE ANY TOLERANCE OR OTHER DETAIL SPECIFIED ON THIS DRAWING NOTIFY THE PURCHASER PROMPTLY.

LD10072

MAXIMUM ALLOWABLE TOLERANCES HAVE BEEN DETERMINED AND DEVIATIONS WILL BE CAUSE FOR REJECTION. REMOVE ALL BURRS AND SHARP EDGES

USED ON

MODEL

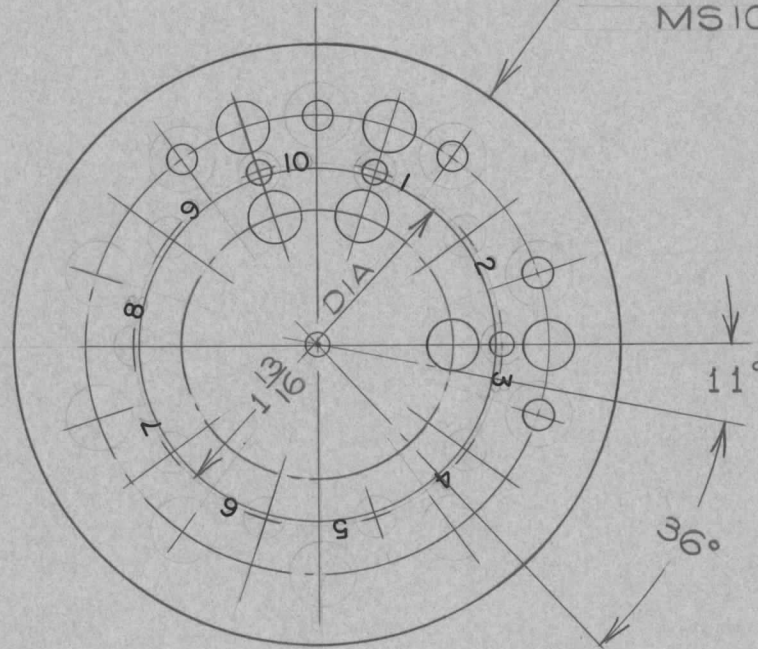
PROJECT NO.

ASS'Y. NO.

DATE

A-10209 OCT 6 1959

XTAL MTG PLATE
MS10312



NOTE:

FIGURES TO BE APPROX. 3/32 HIGH, BLACK. EQUALLY SPACED 36° APART ON 1-13/16 DIA AS SHOWN.

| REQ. | ITEM | PART NO. | DESCRIPTION | SYMBOL |
|------|------|--------------------|---|---------------------------------|
| | | | TMC (Canada) LIMITED OTTAWA ONTARIO | |
| | | STOCK SIZE | LETTERING DETAILS | |
| | | MATERIAL | 10 POSITION XTAL OVEN | |
| | | WEIGHT PER PC. | DCM | |
| | | TYPE & TEMPER | DRAWN | ELEC. DES. APP. MECH. DES. APP. |
| | | HEAT TREAT. SPEC. | CHECKED | FINAL APPROVAL |
| | | FINISH & SPEC. NO. | | LD10072 |

| ISSUE | ITEM | CHANGED FROM | DATE | CN. NO. | DRAFTS | CHECKER | ENG. APP. |
|-------|------|--------------|------|---------|--------|---------|-----------|
| | | | | | | | |

TOLERANCES

SCALE 1:1

ALL OTHERS

DEC. DIM. \pm
FRAC. DIM. $\pm 1/64$
ANGULAR DIM. $\pm 10'$

DRILL, PUNCH, COMMERCIAL STOCK SIZES AND MANUFACTURERS TOLERANCES ARE NOT INCLUDED.

IF IT IS FOUND DESIRABLE TO CHANGE ANY TOLERANCE OR OTHER DETAIL SPECIFIED ON THIS DRAWING NOTIFY THE PURCHASER PROMPTLY.

LD10078

MAXIMUM ALLOWABLE TOLERANCES HAVE BEEN DETERMINED AND DEVIATIONS WILL BE CAUSE FOR REJECTION. REMOVE ALL BURRS AND SHARP EDGES

USED ON

MODEL

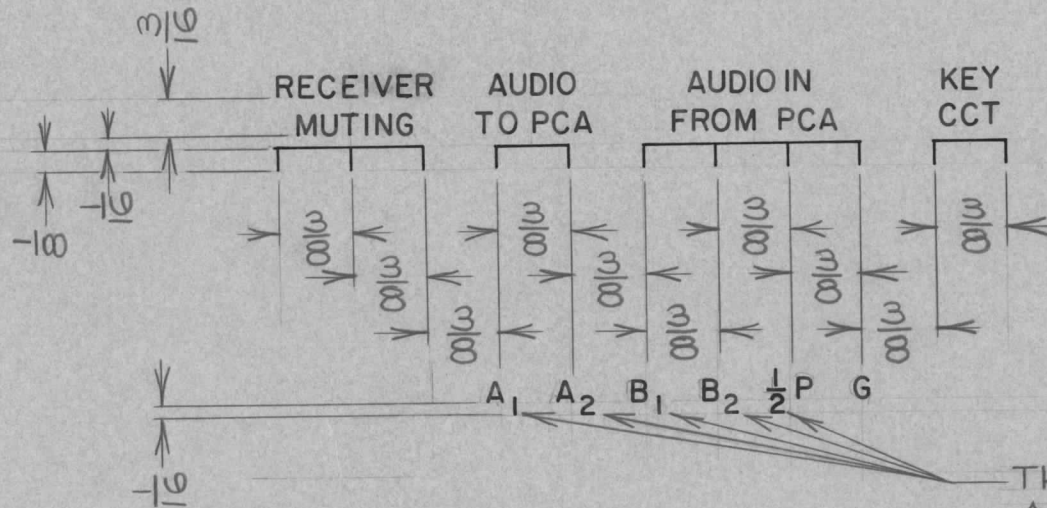
PROJECT NO.

ASS'Y. NO.

DATE

CRCU-1 CE5004A

10/28/59



THESE FIGURES TO BE APPROX .100" HIGH.

WITH EXCEPTION OF FIGURES INDICATED, FIGURES TO BE 1/8" HIGH.

| REQ. | ITEM | PART NO. | DESCRIPTION | SYMBOL |
|--------------------|------|----------|---|--------------------------------------|
| | | | TMC (Canada) LIMITED OTTAWA ONTARIO | |
| STOCK SIZE | | | | |
| MATERIAL | | | STAMPS TO BE B.O. | |
| WEIGHT PER PC. | | | CRCU-1 | |
| TYPE & TEMPER | | | DCM | |
| | | | DRAWN | ELEC. DES. APP. MECH. DES. APP. |
| HEAT TREAT. SPEC. | | | CHECKED | |
| FINISH & SPEC. NO. | | | FINAL APPROVAL | |
| | | | LD10078 | |

| ISSUE | ITEM | CHANGED FROM | DATE | CN. NO. | DRAFTS | CHECKER | ENG. APP. |
|------------|------|--|---|---------|--------|---------|-----------|
| TOLERANCES | | | SCALE 1:1 | | | | |
| ALL OTHERS | | DEC. DIM. ± FRAC. DIM. ± 1/64 ANGULAR DIM. ± | DRILL, PUNCH, COMMERCIAL STOCK SIZES AND MANUFACTURERS TOLERANCES ARE NOT INCLUDED. | | | | |

IF IT IS FOUND DESIRABLE TO CHANGE ANY TOLERANCE OR OTHER DETAIL SPECIFIED ON THIS DRAWING NOTIFY THE PURCHASER PROMPTLY.

LD10083

MAXIMUM ALLOWABLE TOLERANCES HAVE BEEN DETERMINED AND DEVIATIONS WILL BE CAUSE FOR REJECTION. REMOVE ALL BURRS AND SHARP EDGES

USED ON

MODEL

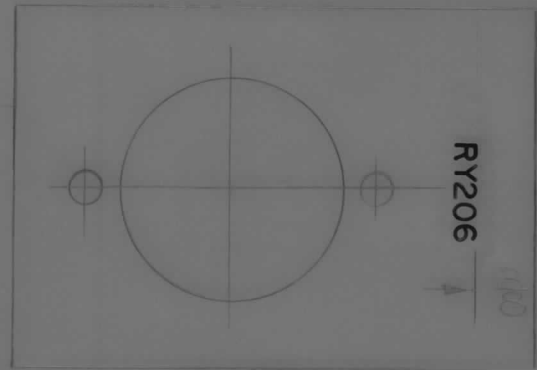
PROJECT NO.

ASS'Y. NO.

DATE

CTCUH CE5004A

DEC 4/59



RELAY BKT-MS10371

LETTERING TO BE BLACK & 8 HIGH

| REQ. | ITEM | PART NO. | DESCRIPTION | SYMBOL |
|------------|------|----------|-----------------------------|--------|
| | | | TMC (Canada) LIMITED | |
| | | | OTTAWA ONTARIO | |
| STOCK SIZE | | | STAMPING DETAILS | |
| | | | BRACKET | |
| | | | JPC | |
| | | | DRAWN | |
| | | | ELEC. DES. APP. | |
| | | | MECH. DES. APP. | |
| | | | R. W. Thomas | |
| | | | HOML | |
| | | | 120C | |
| | | | CHECKED | |
| | | | FINAL APPROVAL | |
| | | | LD10083 | |

| SUE | ITEM | CHANGED FROM | DATE | CN. NO. | DRAFTS | CHECKER | ENG APP. |
|------------|------|----------------|------|---|--------|---------|----------|
| TOLERANCES | | | | | | | |
| | | | | SCALE 1:1 | | | |
| | | | | DRILL, PUNCH, COMMERCIAL STOCK SIZES AND MANUFACTURERS TOLERANCES ARE NOT INCLUDED. | | | |
| | | DEC. DIM. ± | | | | | |
| | | FRAC. DIM. ± | | 1/64 | | | |
| | | ANGULAR DIM. ± | | | | | |

IF IT IS FOUND DESIRABLE TO CHANGE ANY TOLERANCE OR OTHER DETAIL SPECIFIED ON THIS DRAWING NOTIFY THE PURCHASER PROMPTLY.

LD10096 A

MAXIMUM ALLOWABLE TOLERANCES HAVE BEEN DETERMINED AND DEVIATIONS WILL BE CAUSE FOR REJECTION. REMOVE ALL BURRS AND SHARP EDGES

USED ON

MODEL

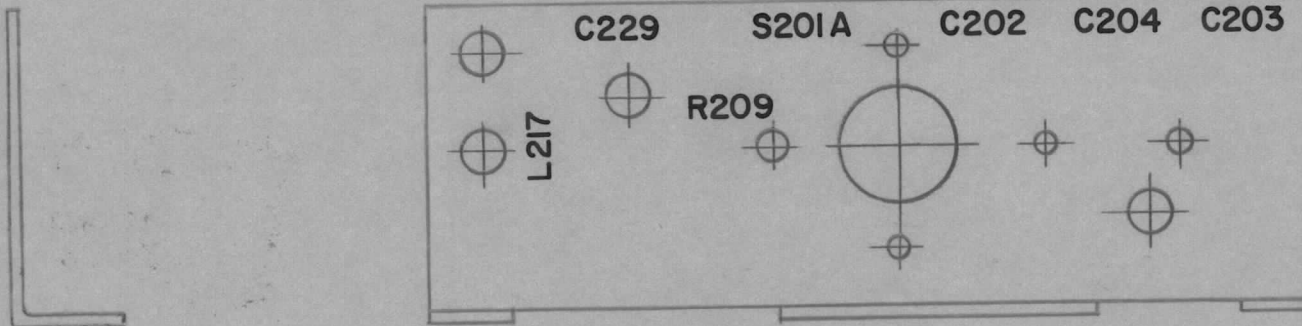
PROJECT NO.

ASS'Y. NO.

DATE

RFA-1

29/11/60



NOTE: STAMPING TO BE BLACK & 1/8 HIGH.

REF: MS10407A

| REQ. | ITEM | PART NO. | DESCRIPTION | | | SYMBOL |
|------|------|----------|--|--|--|---------------------------------|
| | | | TMC(Canada) LIMITED OTTAWA ONTARIO | | | |
| | | | STAMPING, SWITCH MTG. | | | |
| | | | BKT., PAL-350 | | | |
| | | | JPC | | | KH |
| | | | DRAWN | | | ELEC. DES. APP. MECH. DES. APP. |
| | | | CHECKED | | | FINAL APPROVAL |
| | | | LD10096 | | | A |

| ISSUE | ITEM | CHANGED FROM | DATE | CN. NO. | DRAFTS | CHECKER | ENG. APP. |
|-------|------|--------------------|-----------|---------|--------|---------|-----------|
| A | | LD10096A WAS LD424 | NOV 29/60 | | JPC | GHK | KH |

| TOLERANCES | | SCALE |
|------------|---|---|
| ALL OTHERS | DEC. DIM. ± FRAC. DIM. ± ANGULAR DIM. ± | DIMENSIONS IN INCHES UNLESS OTHERWISE SPECIFIED DRILL, PUNCH, COMMERCIAL STOCK SIZES AND MANUFACTURERS TOLERANCES ARE NOT INCLUDED. |

IF IT IS FOUND DESIRABLE TO CHANGE ANY TOLERANCE OR OTHER DETAIL SPECIFIED ON THIS DRAWING NOTIFY THE PURCHASER PROMPTLY.

LD10099B

MAXIMUM ALLOWABLE TOLERANCES HAVE BEEN DETERMINED AND DEVIATIONS WILL BE CAUSE FOR REJECTION. REMOVE ALL BURRS AND SHARP EDGES

USED ON

MODEL

PROJECT NO.

ASS'Y. NO.

DATE

RFA-1

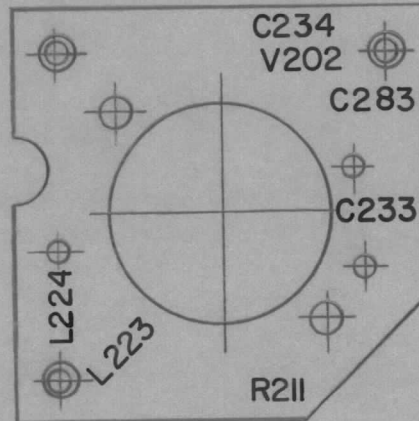
29/11/60

NOTICE TO PERSONS RECEIVING THIS DRAWING

THE TECHNICAL MATERIEL CORPORATION claims proprietary right in the material disclosed hereon. This drawing is issued in confidence for engineering information only and may not be reproduced or used to manufacture anything shown hereon without permission from THE TECHNICAL MATERIEL CORPORATION to the user. This drawing is loaned for mutual assistance and is subject to recall at any time.

Property of:

THE TECHNICAL MATERIEL CORPORATION
MAMARONECK, NEW YORK



NOTE: LETTERING TO BE BLACK & 1/8 HIGH.

REF: MS10414.

| REQ. | ITEM | PART NO. | DESCRIPTION | | | SYMBOL | |
|------------|----------------|--------------------|---|--------------------|--------|-----------------|-----------|
| | | | TMC (Canada) LIMITED OTTAWA ONTARIO | | | | |
| | | | STAMPING, DRIVER TUBE | | | | |
| | | | MTG. PLATE, PAL-350. | | | | |
| | | | J.P.C. | | | KH | |
| B | 1 | SYM: C233 ADDED | 10-12-62 | 7434 | CS | JH | |
| A | 1 | LD10099A WAS LD427 | NOV 29/60 | SW | JPC | KH | |
| ISSUE | ITEM | CHANGED FROM | DATE | CN. NO. | DRAFTS | CHECKER | ENG. APP. |
| TOLERANCES | | | SCALE | | | | |
| ALL OTHERS | DEC. DIM. ± | | DIMENSIONS IN INCHES UNLESS OTHERWISE SPECIFIED | | | | |
| | FRAC. DIM. ± | | DRILL, PUNCH, COMMERCIAL STOCK SIZES AND MANUFACTURERS TOLERANCES ARE NOT INCLUDED. | | | | |
| | ANGULAR DIM. ± | | | | | | |
| | | HEAT TREAT. SPEC. | | FINISH & SPEC. NO. | | | |
| | | DRAWN | | ELEC. DES. APP. | | MECH. DES. APP. | |
| | | CHECKED | | FINAL APPROVAL | | | |
| | | | | LD10099 B | | | |