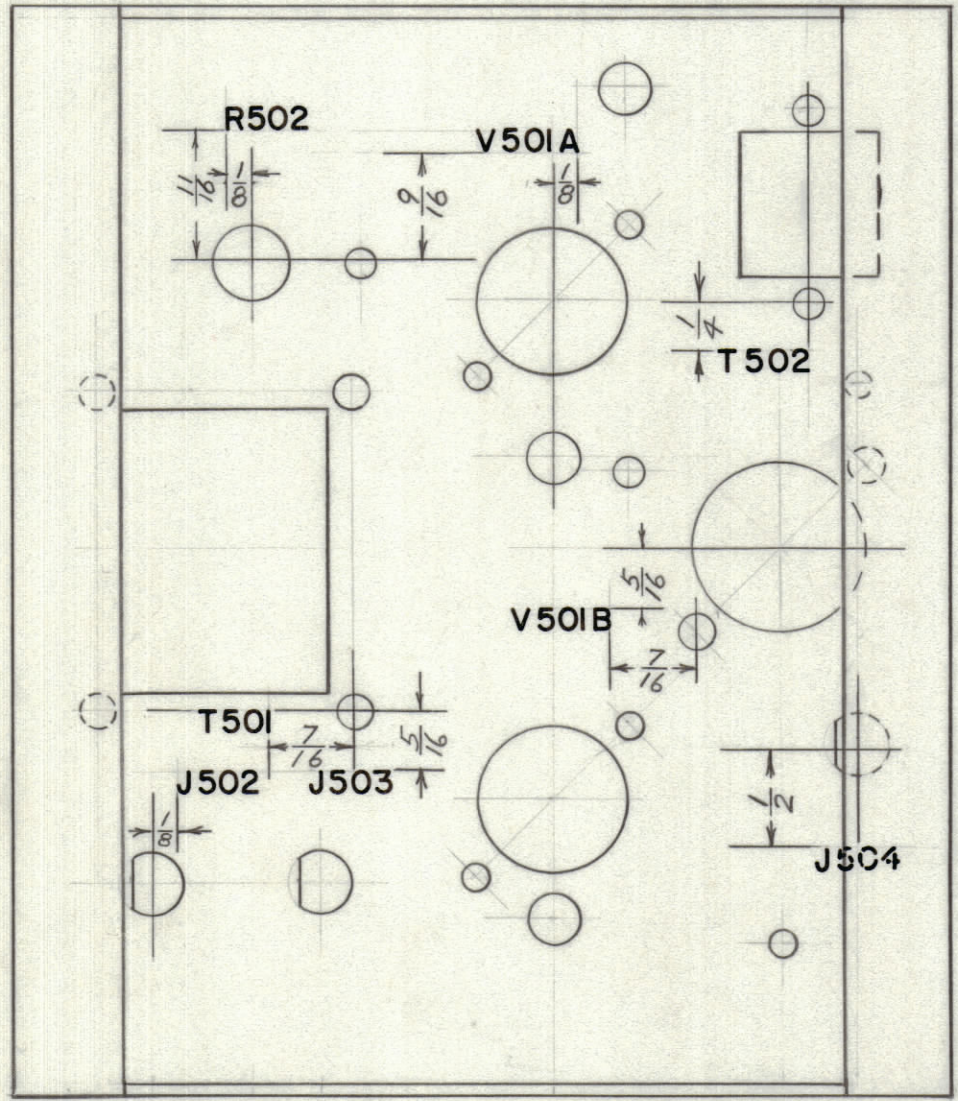
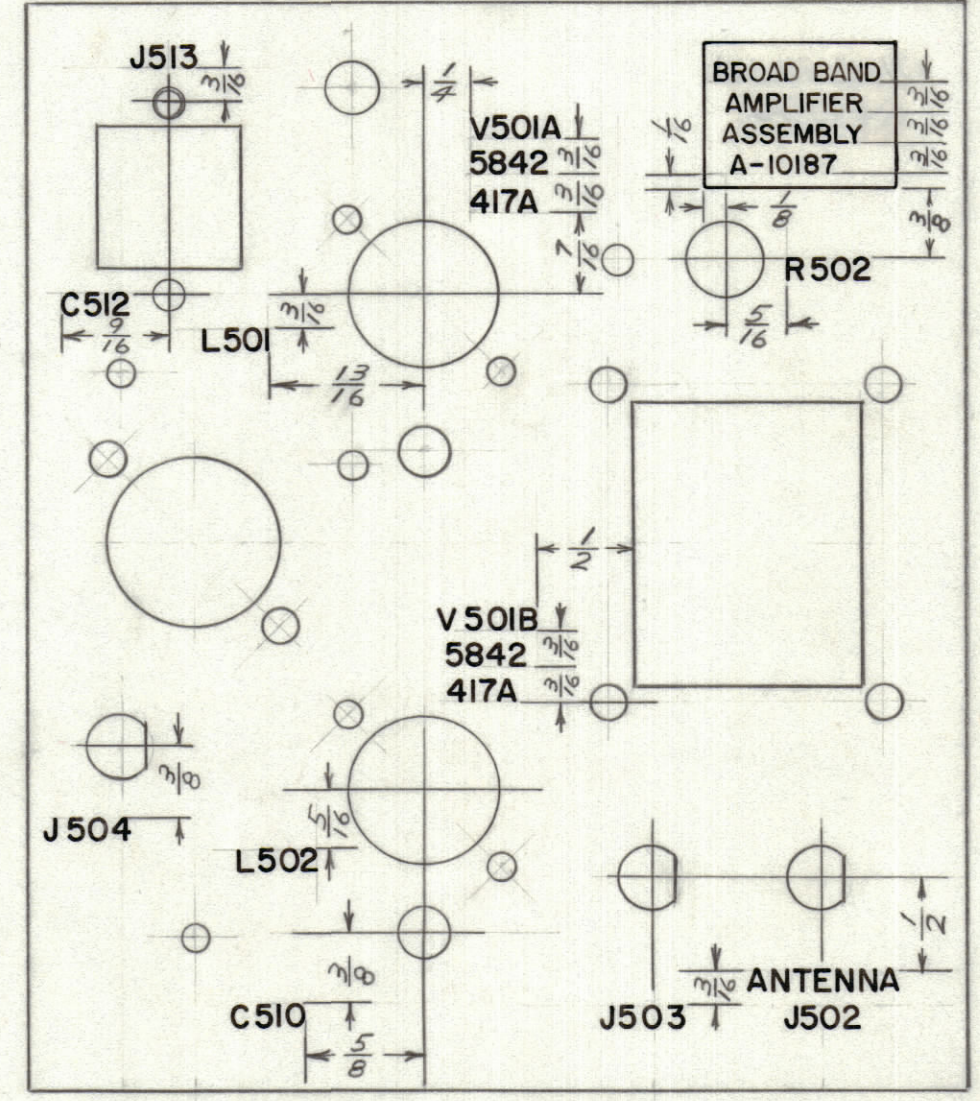


IF IT IS FOUND DESIRABLE TO CHANGE ANY TOLERANCE OR OTHER DETAIL SPECIFIED ON THIS DRAWING NOTIFY THE PURCHASER PROMPTLY.		DIMENSIONS IN INCHES UNLESS OTHERWISE SPECIFIED					
MAXIMUM ALLOWABLE TOLERANCES HAVE BEEN DETERMINED AND DEVIATIONS WILL BE CAUSE FOR REJECTION. REMOVE ALL BURRS AND SHARP EDGES.							
ISSUE	ITEM	CHANGED FROM	DATE	CN. NO.	DRAFTS	CHECKER	ENG. APP.
A		RE-DRAWN WITH MORE DETAIL		10293	RD	MJT	[Signature]

REQ.	ITEM	PART NO.	DESCRIPTION	SYMBOL
------	------	----------	-------------	--------



BOTTOM VIEW



TOP VIEW

LD10052 A

NOTE:
 LETTERING TO BE 1/8 HIGH BLACK GOTHIC
 MARKING PROCESS: AS PER TMC SPECIFICATION S-727

REF: MS-10300

TOLERANCES		SCALE:
ALL OTHERS	DEC. DIM. ± FRAC. DIM. ± ANGULAR DIM. ±	DRILL, PUNCH, COMMERCIAL STOCK SIZES AND MANUFACTURERS TOLERANCES ARE NOT INCLUDED.

AMC 6-5 A-10187 13-8-63

MODEL	PROJECT NO.	ASS'Y. NO.	DATE

STOCK SIZE		TMC (Canada) LIMITED OTTAWA ONTARIO		
MATERIAL		STAMPING DETAILS PRE-AMP CHASSIS		
WEIGHT PER PC.		RD	[Signature]	[Signature]
TYPE & TEMPER		DRAWN	ELEC. DES. APP.	MECH. DES. APP.
HEAT TREAT. SPEC.		MJT		
FINISH & SPEC. NO.		CHECKED	FINAL APPROVAL	
			LD10052 A	