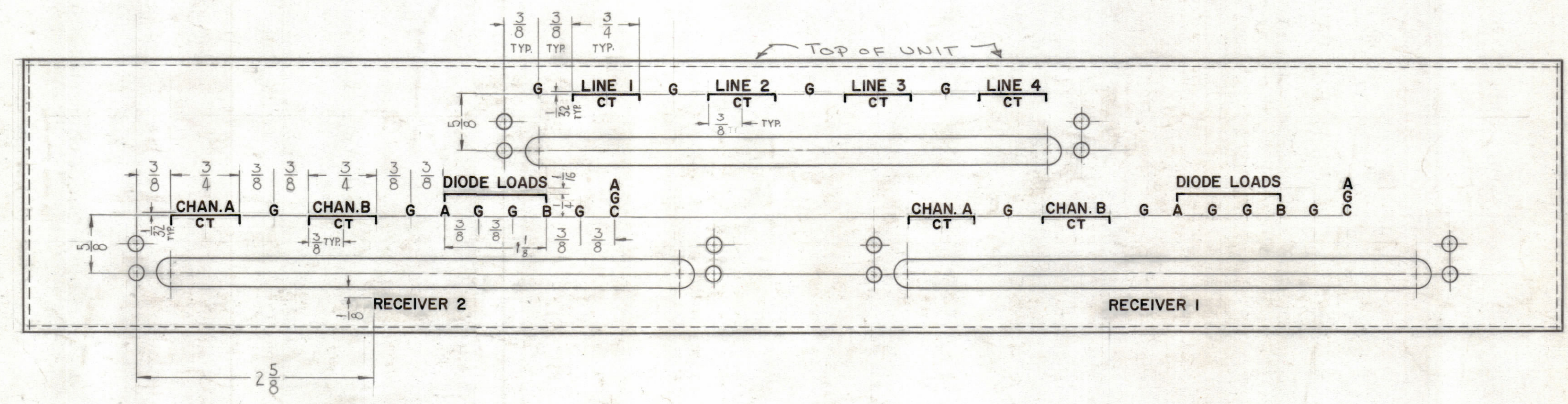
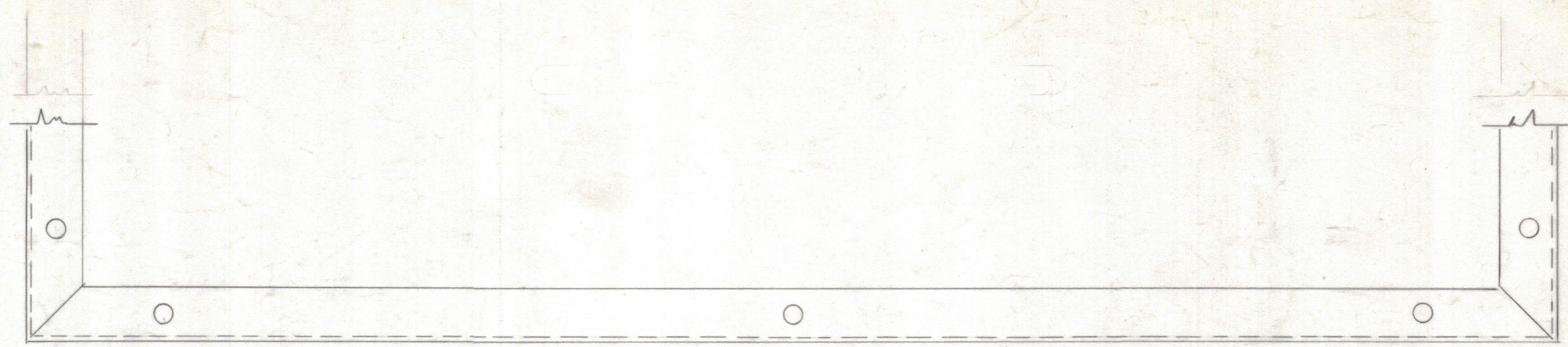


| REVISIONS | | | | | | | |
|-----------|-----|---------------------------------|---------|------------|-------|------|------|
| ZONE | SYM | DESCRIPTION | DATE | E.M.N. NO. | DRAFT | CHKD | APPD |
| | Ø | ORIGINAL RELEASE FOR PRODUCTION | 4/22/69 | | | | |



EXTERIOR VIEW SHOWN

- NOTES:
- 1- DIMENSIONS OF RECEIVER 2 ARE TYPICAL FOR RECEIVER 1
 - 2- ALL LETTERING TO BE $\frac{1}{8}$ HIGH BLACK GOTHIC, EXCEPT ALL "CT" LETTERS
 - 3- "CT" TO BE $\frac{3}{32}$ HIGH BLACK GOTHIC.

NOTICE TO PERSONS RECEIVING THIS DRAWING

THE TECHNICAL MATERIEL CORPORATION claims proprietary right in the material disclosed hereon. This drawing is issued in confidence for engineering information only and may not be reproduced or used to manufacture anything shown hereon without permission from THE TECHNICAL MATERIEL CORPORATION to the user. This drawing is loaned for mutual assistance and is subject to recall at any time.

Property of:
THE TECHNICAL MATERIEL CORPORATION
MAMARONECK, NEW YORK

REF. TMC DWG. MS-2952

| REQ'D. | ITEM | PART NUMBER | DESCRIPTION | SYMBOL |
|---|------|--|-------------------|-----------------------|
| LIST OF MATERIAL | | | | |
| MATERIAL | | THE TECHNICAL MATERIEL CORP. MAMARONECK, NEW YORK | | |
| FINISH | | TITLE LETTERING, CHASSIS WRAPAROUND | | |
| UNLESS OTHERWISE SPECIFIED DIMENSIONS ARE IN INCHES AND INCLUDE CHEMICALLY APPLIED OR PLATED FINISHES | | DRAWN Gianfilippo | DATE 5-19-62 | FINAL APPROVAL SAM |
| DECIMALS .X ± .05 .XX ± .01 .XXX ± .005 | | CHECKED JK | DATE 27 May 62 | DATE 4/22/69 |
| FRACTIONS ± 1/64 ANGLES ± 0° 30' | | ELECT. DES. RKH | DATE 22 May 62 | DATE |
| TOLERANCES | | MECH. DES. RK | DATE 22 May 62 | DATE |
| THE CONTENTS OF THIS DRAWING ARE THE EXCLUSIVE PROPERTY OF THE TECHNICAL MATERIEL CORP. ITS UNAUTHORIZED USE OR REPRODUCTION IN WHOLE OR IN PART IS STRICTLY FORBIDDEN. | | SHEET | | REV. LTR. |

NOTES