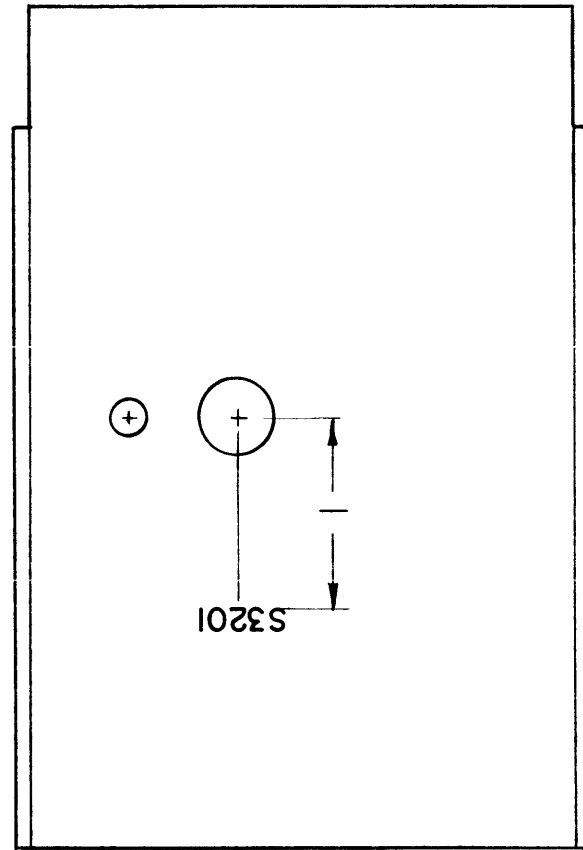
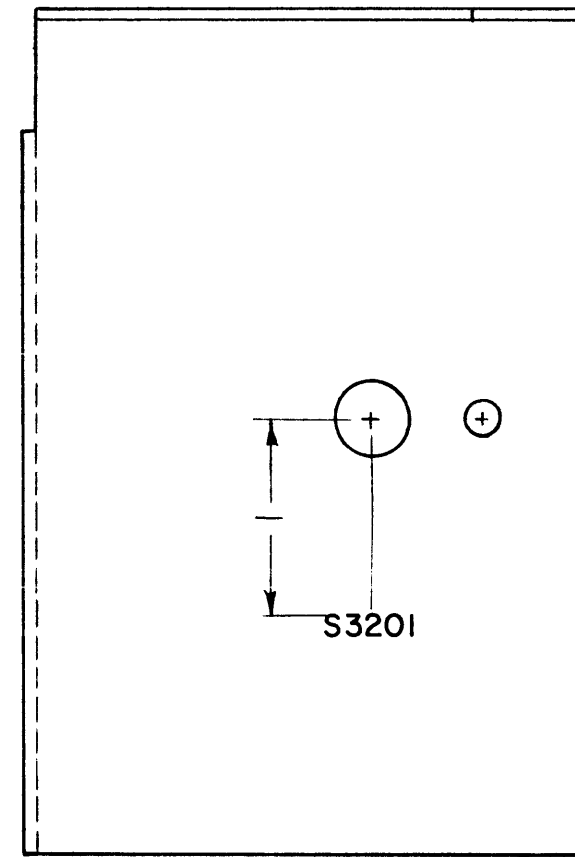
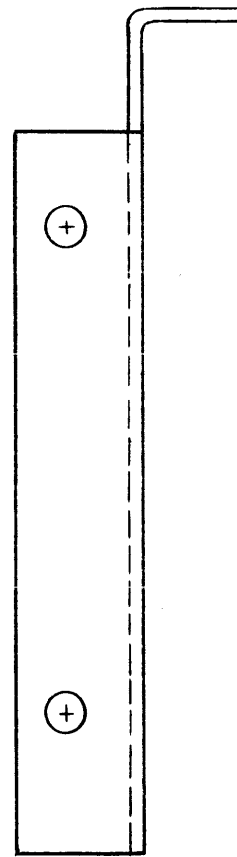


THE CONTENTS OF THIS DRAWING ARE THE EXCLUSIVE PROPERTY OF THE TECHNICAL MATERIEL CORP. ITS UNAUTHORIZED USE OR REPRODUCTION IN WHOLE OR IN PART IS TRICTLY FORBIDDEN.

LD-1089



REAR VIEW



FRONT VIEW

~ UNLESS OTHERWISE SPECIFIED ~
 1/8 HIGH BLACK LUSTERLESS, GOTHIC LETTERING.
 MARKING PROCESS: AS PER TMC SPECIFICATION S-727
 ALL LETTERING TO BE CENTERED ON HOLES

REF. M5-2883 (2)

SYM	DESCRIPTION	DATE	CH. NO.	DRAFTS	CHECKER	ENG. APP.
	UNLESS OTHERWISE SPECIFIED: DIMENSIONS ARE IN INCHES TOLERANCES ON FRACTIONS ± 1/64 DECIMALS ± .005 ANGLES ± 1/2°	SCALE: MAXIMUM ALLOWABLE TOLERANCES HAVE BEEN DETERMINED AND ANY DEVIATIONS WILL BE CAUSE FOR REJECTION. REMOVE ALL BURRS AND SHARP EDGES				
		1	HFS-1	3200		B-17-62
		REQ. PER UNIT	MODEL	SECTION	ASS'Y. NO.	DATE
			USED ON			

REQ.	ITEM	PART NO.	J. STRUMMER	DESCRIPTION	SYMBOL
			THE TECHNICAL MATERIEL CORP. MAMARONECK, NEW YORK		
		STOCK SIZE	LETTERING, SWITCH MTG. PLATE (3200 DECK)		
		MATERIAL			
		TYPE & TEMPER	G.D.L.	J.H.	
		HEAT TREAT. SPEC.	DRAWN	CHECKED	FINAL APPROVAL
		FINISH & SPEC. NO.	JMA	JMA	LD-1089
			ELEC. DES. APP.	MECH. DES. APP.	