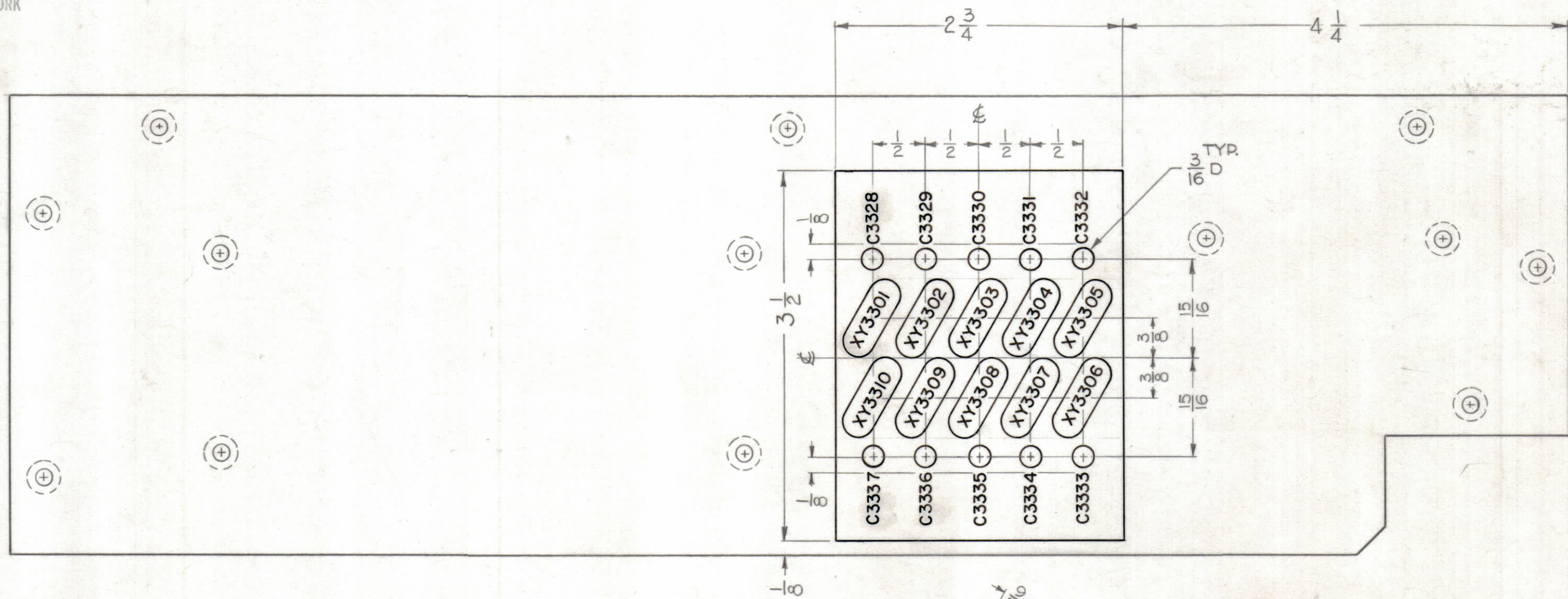


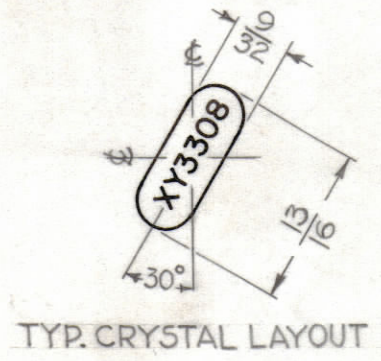
**NOTICE TO PERSONS RECEIVING THIS DRAWING**

THE TECHNICAL MATERIEL CORPORATION claims proprietary right in the material disclosed hereon. This drawing is issued in confidence for engineering information only and may not be reproduced or used to manufacture anything shown hereon without permission from THE TECHNICAL MATERIEL CORPORATION to the user. This drawing is loaned for mutual assistance and is subject to recall at any time.

Property of:  
THE TECHNICAL MATERIEL CORPORATION  
MAMARONECK, NEW YORK



- ~UNLESS OTHERWISE SPECIFIED~
- 1~ 1/8 HIGH BLACK LUSTERLESS, GOTHIC LETTERING.
  - MARKING PROCESS: AS PER TMC SPECIFICATION S-727
  - 2~ ALL LINES TO BE SAME WIDTH AS LETTERING.
  - 3~ ALL LETTERING TO BE CENTERED ON HOLES.



REF:  
MS-2886 (4)  
PX-658 (1)

SYM	ZONE	DESCRIPTION	DATE	CH. NO.	DRAFTS	CHECKER	ENG. APP.
UNLESS OTHERWISE SPECIFIED:							
DIMENSIONS ARE IN INCHES			SCALE				
TOLERANCES ON			MAXIMUM ALLOWABLE TOLERANCES HAVE BEEN DETERMINED AND ANY DEVIATIONS WILL BE CAUSE FOR REJECTION. REMOVE ALL BURRS & SHARP EDGES				
FRACTIONS ± 1/64			DECIMALS ± .005		ANGLES ± 1/2°		

REQ. PER UNIT	MODEL	SECTION	ASSY. NO.	DATE
	HFS-1	3300		8-15-62
USED ON				

REQ. ITEM	PART NO.	DESCRIPTION	SYMBOL
THE TECHNICAL MATERIEL CORP. MAMARONECK, NEW YORK			
LETTERING, LEFT SIDEPLATE (3300 DECK)			
DRAWN		CHECKED	
G.D.L.		J.H.	
TYPE & TEMPER		HEAT TREAT. SPEC.	
FINISH & SPEC. NO.		ELEC. DES. APP.	
MECH. DES. APP.		SHEET OF	
LD-1088		LD-1088	