

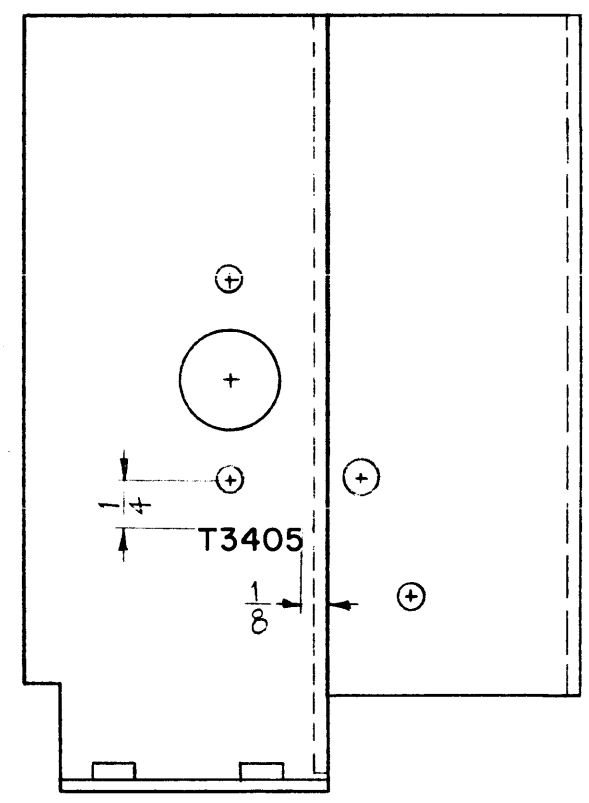
LD-1077

THE CONTENTS OF THIS DRAWING ARE THE EXCLUSIVE PROPERTY OF THE TECHNICAL MATERIEL CORP. ITS UNAUTHORIZED USE OR REPRODUCTION IN WHOLE OR IN PART IS STRICTLY FORBIDDEN.

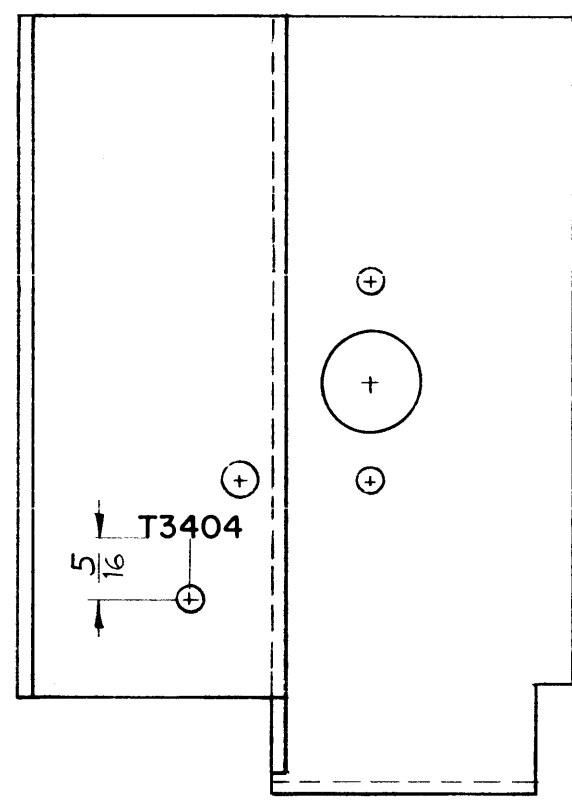
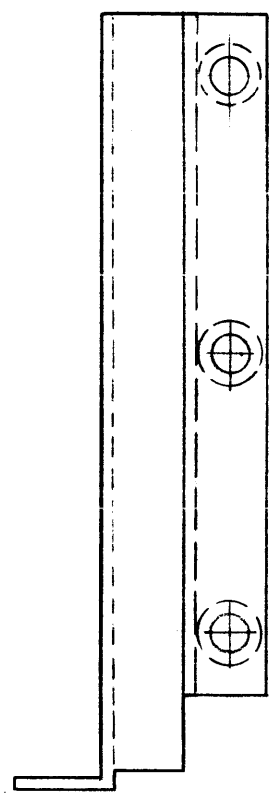
NOTICE TO PERSONS RECEIVING THIS DRAWING

THE TECHNICAL MATERIEL CORPORATION claims proprietary right in the material disclosed hereon. This drawing is issued in confidence for engineering information only and may not be reproduced or used to manufacture anything shown hereon without permission from THE TECHNICAL MATERIEL CORPORATION to the user. This drawing is loaned for mutual assistance and is subject to recall at any time.

Property of:
THE TECHNICAL MATERIEL CORPORATION
MAMARONECK, NEW YORK



FRONT VIEW



REAR VIEW

UNLESS OTHERWISE SPECIFIED -
1/8 HIGH BLACK LUSTERLESS, GOTHIC LETTERING.
MARKING PROCESS: AS PER TMC SPECIFICATION S-727
ALL LETTERING TO BE CENTERED ON HOLES.

REF: MS-2919 (2)

A REVISED & UPDATED							1/3/69	19159	K.H.	J.D.	GP	A.D.
SYM	DESCRIPTION	DATE	CH. NO.	DRAFTS	CHECKER	ENG. APP.	SCALE:					
UNLESS OTHERWISE SPECIFIED:							MAXIMUM ALLOWABLE TOLERANCES HAVE BEEN DETERMINED AND ANY DEVIATIONS WILL BE CAUSE FOR REJECTION. REMOVE ALL BURRS AND SHARP EDGES					
DIMENSIONS ARE IN INCHES							1					
TOLERANCES ON FRACTIONS ± 1/64 DECIMALS ± .005 ANGLES ± 1/2°							HFS-1 3400 8-17-62					
							REQ. PER UNIT	MODEL	SECTION	ASS'Y. NO.	DATE	USED ON

REQ.	ITEM	PART NO.	J. STRUMER	DESCRIPTION	SYMBOL
			THE TECHNICAL MATERIEL CORP. MAMARONECK, NEW YORK		
STOCK SIZE			LETTERING, SHIELD MTG. SWITCH		
MATERIAL			3400 DECK		
		G.D.L.	Hile	BP	
TYPE & TEMPER		HEAT TREAT. SPEC.	DRAWN	CHECKED	FINAL APPROVAL
			JMA	JMA	LD-1077
FINISH & SPEC. NO.		ELEC. DES. APP.		MECH. DES. APP.	A