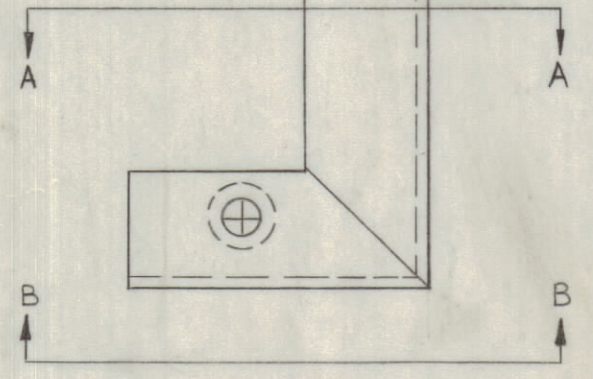
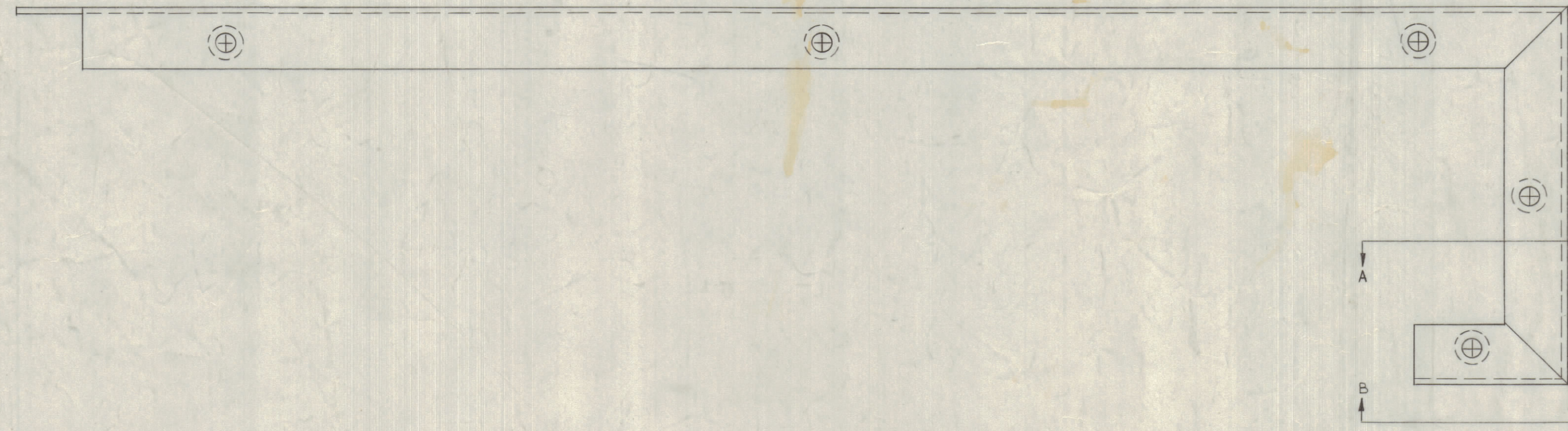
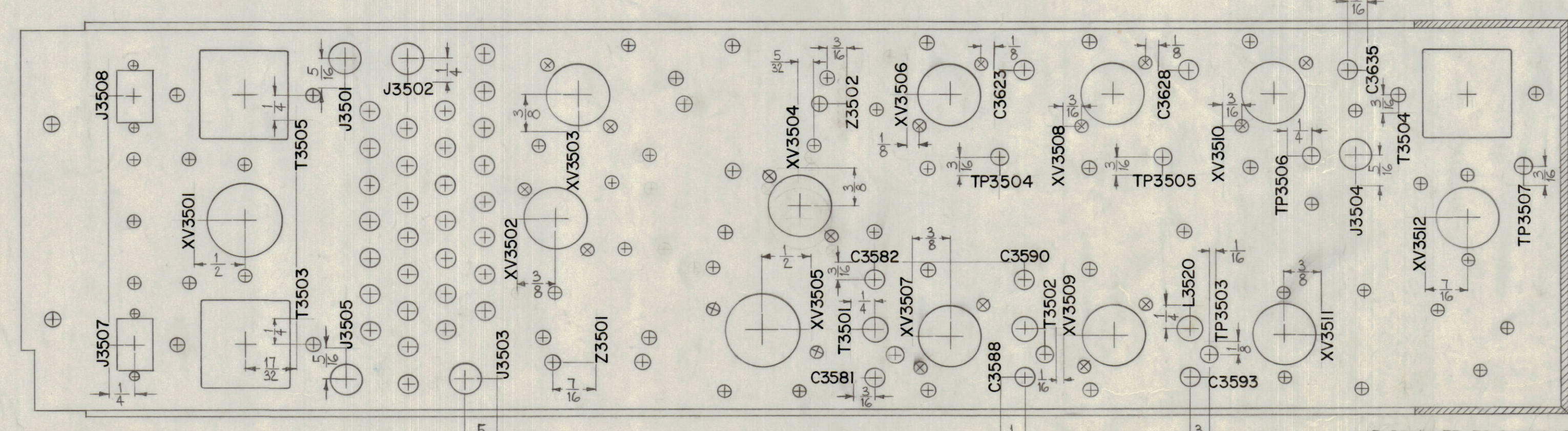


TOP VIEW



SECTION A-A

SECTION B-B



BOTTOM VIEW

LIP REMOVED TO SHOW LETTERING

UNLESS OTHERWISE SPECIFIED ~
 1/8 HIGH BLACK LUSTERLESS, GOTHIC LETTERING.
 MARKING PROCESS: AS PER TMC SPECIFICATION S-727
 ALL LETTERING TO BE CENTERED ON HOLES.

NOTICE TO PERSONS RECEIVING THIS DRAWING
 THE TECHNICAL MATERIEL CORPORATION claims
 proprietary right in the material disclosed herein.
 This drawing is issued in confidence for engineering
 information only and may not be reproduced or used
 to manufacture anything shown herein without per-
 mission from THE TECHNICAL MATERIEL CORPORA-
 TION to the user. This drawing is loaned for mutual
 assistance and is subject to recall at any time.
 Property of
 THE TECHNICAL MATERIEL CORPORATION
 MAMARONECK, NEW YORK

REF: MS-2832 (B)

C	F6C6 C3635 WAS C3634 (2 PLACES)	8-6-64	12053	J. Strummer			
B	F6 GAUG WAS G4H6	10-23-62	7352	J. Strummer			
A	9578 TP3508 & TP3509 ADDED	7-21-64	7277	J. Strummer			
SYM	ZONE	DESCRIPTION	DATE	CH. NO.	DRAFTS	CHECKER	ENG. APP.
UNLESS OTHERWISE SPECIFIED:			SCALE				
DIMENSIONS ARE IN INCHES			MAXIMUM ALLOWABLE TOLERANCES HAVE BEEN DETERMINED AND ANY DEVIATIONS WILL BE CAUSE FOR REJECTION. REMOVE ALL BURRS & SHARP EDGES				
TOLERANCES ON							
FRACTIONS ± 1/64			DECIMALS ± .005				
			ANGLES ± 1/2°				

REQ. UNIT	MODEL	SECTION	ASS'Y. NO.	DATE	TYPE & TEMPER	HEAT TREAT. SPEC.	FINISH & SPEC. NO.	ELEC. DES. APP.	MECH. DES. APP.	SHEET OF
1	HFS-1	3500		8-17-62						LD-1072 C
USED ON										

LD-1072 C