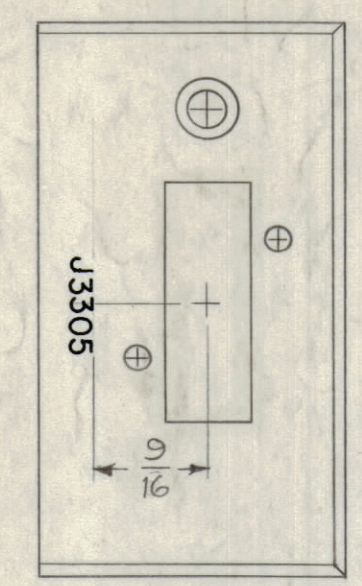
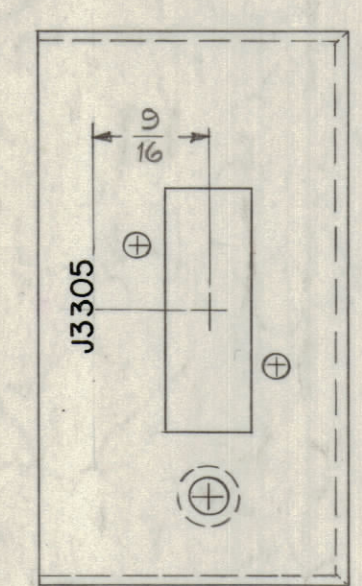


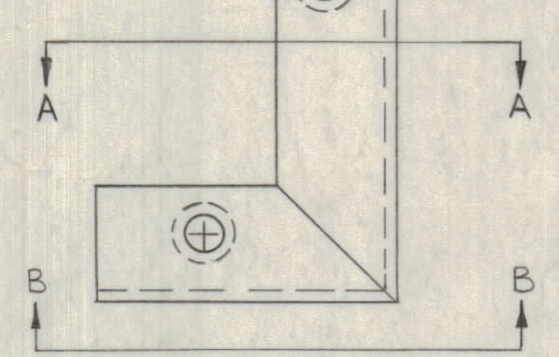
INSERT 6A46 FOR LD1070  
INSERT 6AUG FOR LD1070-2



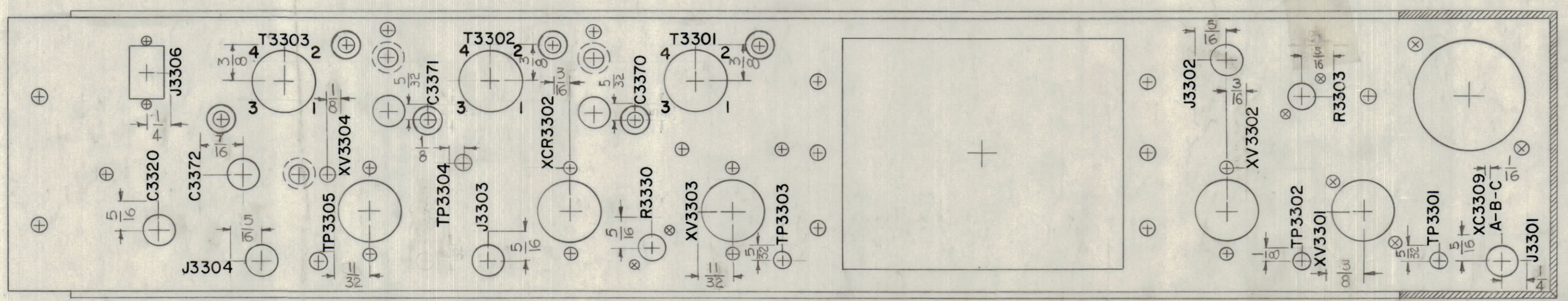
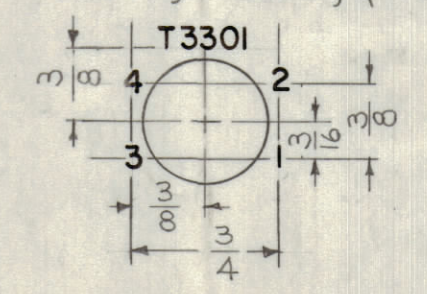
SECTION A-A



SECTION B-B



LETTERING TYPICAL FOR  
T3301, T3302, & T3303



LIP REMOVED TO SHOW LETTERING.

UNLESS OTHERWISE SPECIFIED ~  
1/8 HIGH BLACK LUSTERLESS, GOTHIC LETTERING.  
MARKING PROCESS: AS PER TMC SPECIFICATION §-727  
ALL LETTERING TO BE CENTERED ON HOLES.

NOTICE TO PERSONS RECEIVING THIS DRAWING  
THE TECHNICAL MATERIEL CORPORATION claims  
proprietary right in the material disclosed hereon.  
This drawing is issued in confidence for engineering  
information only and may not be reproduced or used  
to manufacture anything shown hereon without per-  
mission from THE TECHNICAL MATERIEL CORPORA-  
TION to the user. This drawing is loaned for mutual  
assistance and is subject to recall at any time.  
Property of:  
THE TECHNICAL MATERIEL CORPORATION  
MAMARONECK, NEW YORK

C	C3110	ADDED LETTERING 1,2,3,14 TO T3301, T3302 & T3303, ADDED LETTERING DETAIL.	8-18-66	16706	RME	<i>[Signature]</i>	
B	G6	ADDED CALLOUT 6A46 & 6AUG.	6-2-66	16240	C.H.	<i>[Signature]</i>	
A	F10	GAUG WAS 6A46	7-14-67	7367	E.S.	<i>[Signature]</i>	
SYM	ZONE	DESCRIPTION	DATE	CH. NO.	DRAFTS	CHECKER	ENG. APP.
UNLESS OTHERWISE SPECIFIED:			SCALE				
DIMENSIONS ARE IN INCHES			MAXIMUM ALLOWABLE TOLERANCES HAVE BEEN DETERMINED AND ANY DEVIATIONS WILL BE CAUSE FOR REJECTION. REMOVE ALL BURRS & SHARP EDGES				
TOLERANCES ON							
FRACTIONS ± 1/64			DECIMALS ± .005				
			ANGLES ± 1/2°				

REF: MS-2912 (8)

REQ. PER UNIT	MODEL	SECTION	ASS'Y. NO.	DATE	TYPE & TEMPER	HEAT TREAT. SPEC.	FINISH & SPEC. NO.	ELEC. DES. APP.	MECH. DES. APP.	SHEET OF
1	HFS-1	3300		8-17-62				<i>[Signature]</i>	<i>[Signature]</i>	LD-1070 C

LD-1070 C