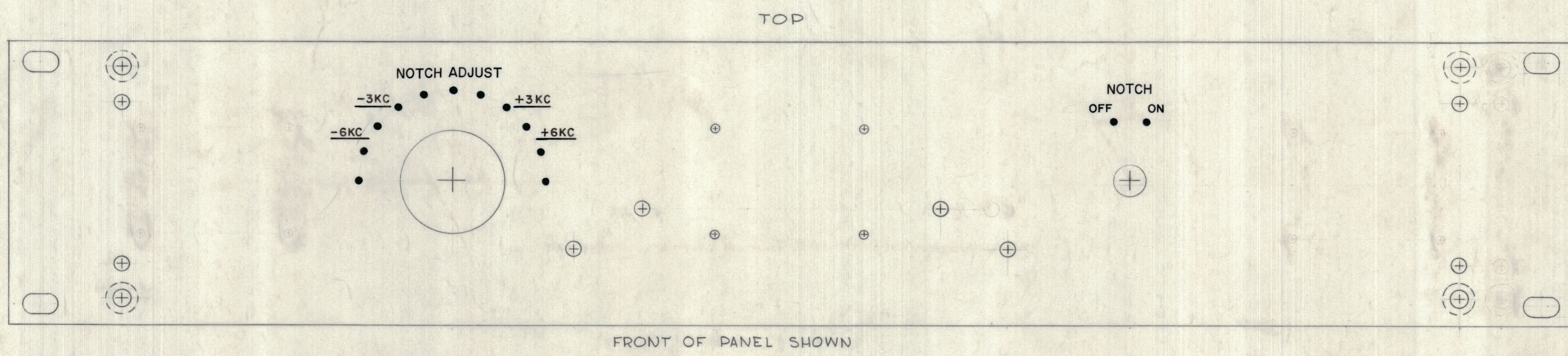


NOTICE TO PERSONS RECEIVING THIS DRAWING

THE TECHNICAL MATERIEL CORPORATION claims proprietary right in the material disclosed herein. This drawing is issued in confidence for engineering information only and may not be reproduced or used to manufacture anything shown herein without permission from THE TECHNICAL MATERIEL CORPORATION to the user. This drawing is loaned for mutual assistance and is subject to recall at any time.

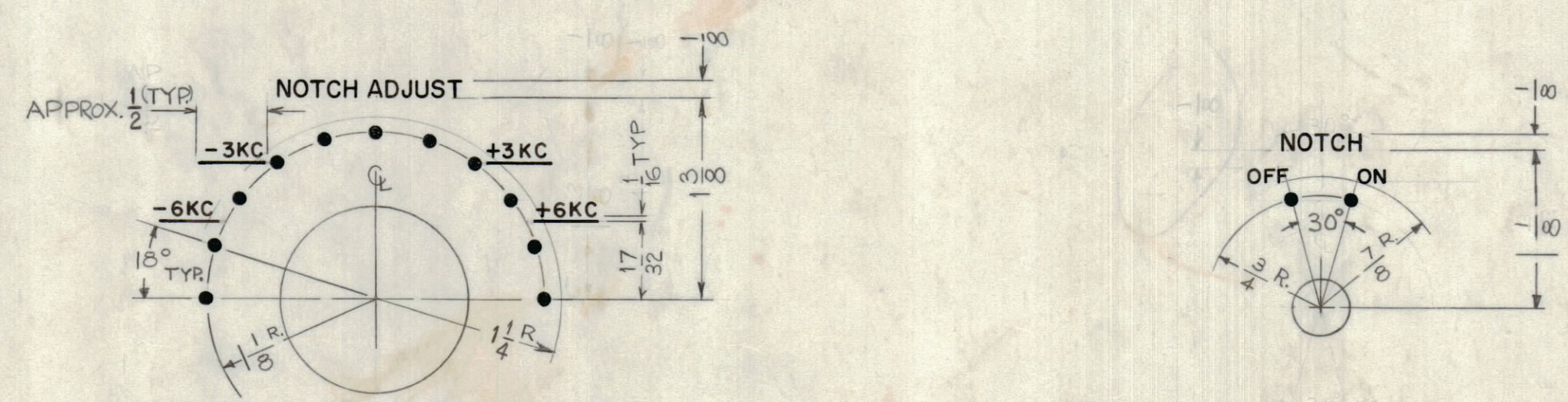
Property of:  
THE TECHNICAL MATERIEL CORPORATION  
MAMARONECK, NEW YORK



FRONT OF PANEL SHOWN

- UNLESS OTHERWISE SPECIFIED—  
1- ALL ENGRAVING TO BE WHITE FILLED GOTHIC.  
2- ALL DOTS TO BE WHITE FILLED.  
3- ALL LINES TO BE WHITE FILLED.  
4- ALL LETTER GROUPS TO BE CENTERED ON HOLES

LETTER HEIGHT	DEPTH OF STROKES	WIDTH OF STROKES
3/32	.010	.015
1/8	.010	.020
DOTS	.010	1/16
LINES	.010	.015



SYM	ZONE	DESCRIPTION	DATE	CH. NO.	DRAFTS	CHECKER	ENG. APP.
UNLESS OTHERWISE SPECIFIED:			SCALE				
DIMENSIONS ARE IN INCHES			MAXIMUM ALLOWABLE TOLERANCES HAVE BEEN DETERMINED AND ANY DEVIATIONS WILL BE CAUSE FOR REJECTION. REMOVE ALL BURRS & SHARP EDGES				
FRACTIONS ± 1/64		DECIMALS ± .005	ANGLES ± 1/2°				

REF: MS-2716 (B)

REQ. ITEM	PART NO.	M. GELLMAN	DESCRIPTION	SYMBOL
		THE TECHNICAL MATERIEL CORP. MAMARONECK, NEW YORK		
STOCK SIZE		ENGRAVING, FRONT PANEL		
MATERIAL				
TYPE & TEMPER		HEAT TREAT. SPEC.		
FINISH & SPEC. NO.		ELEC. DES. APP. MECH. DES. APP.		
DRAWN		CHECKED		FINAL APPROVAL
DATE		DATE		LD-1061
USED ON		SHEET 1 OF 2		

LD-1061