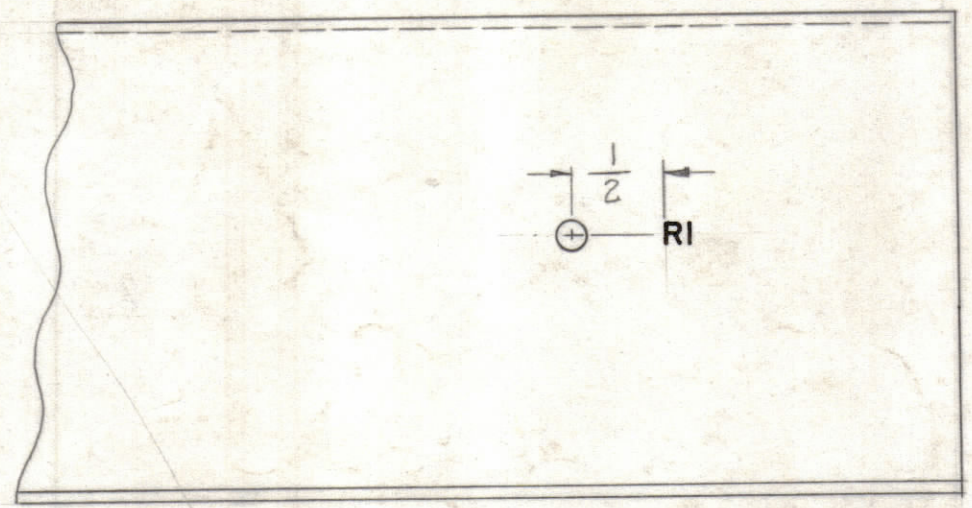
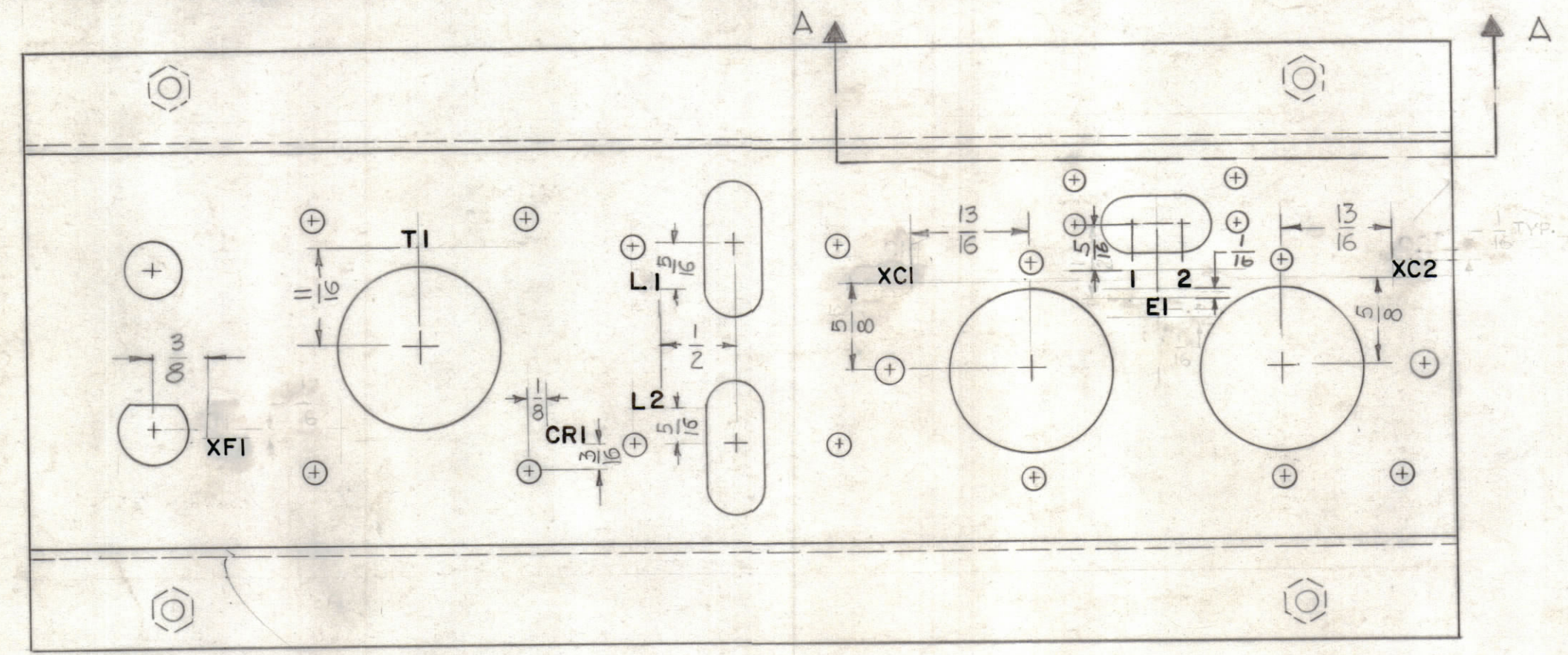
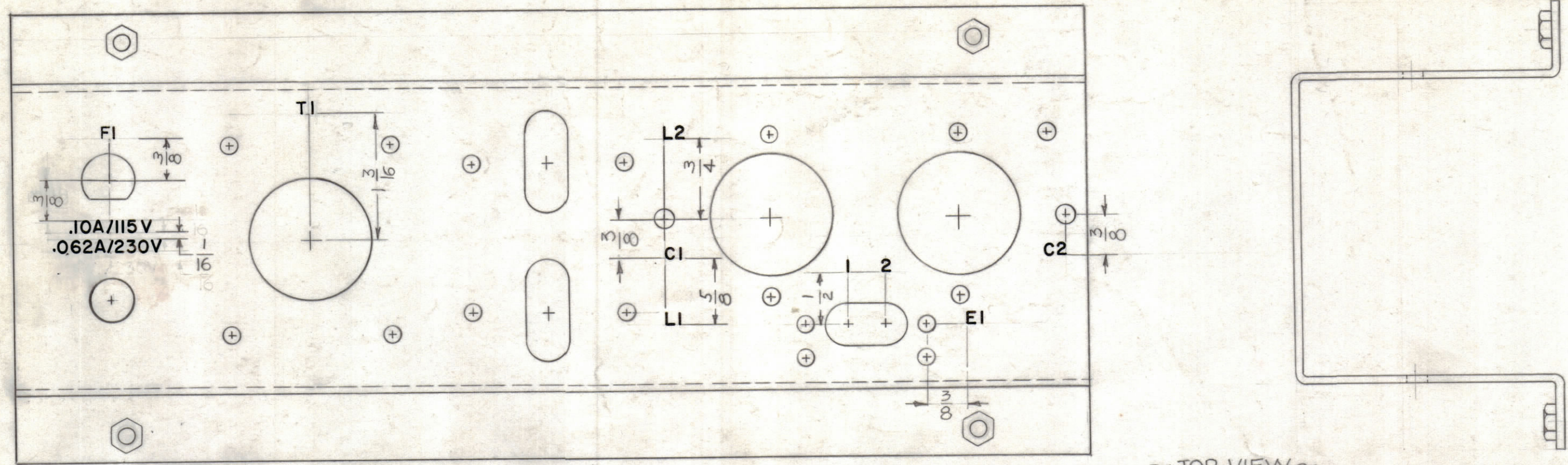


NOTICE TO PERSONS RECEIVING THIS DRAWING

THE TECHNICAL MATERIEL CORPORATION claims proprietary right in the material disclosed hereon. This drawing is issued in confidence for engineering information only and may not be reproduced or used to manufacture anything shown hereon without permission from THE TECHNICAL MATERIEL CORPORATION to the user. This drawing is loaned for mutual assistance and is subject to recall at any time.

Property of:
THE TECHNICAL MATERIEL CORPORATION
MAMARONECK, NEW YORK



NOTES-
ALL LETTERING 1/8 HIGH BLACK GOTHIC

REF ~ MS-2839

SYM	ZONE	DESCRIPTION	DATE	CH. NO.	DRAFTS	CHECKER	ENG. APP.
A	G5, E4	L1, L2 ADDED; 5/16 DIM. WAS 1/2	2-20-62	6400	G.S.	[Signature]	[Signature]
	H7, G7	F1 RELOCATED; 3/8 DIM. WAS 5/16; .062A/230V WAS .20A/230V					

UNLESS OTHERWISE SPECIFIED:
DIMENSIONS ARE IN INCHES
TOLERANCES ON
FRACTIONS ± 1/64 DECIMALS ± .005 ANGLES ± 1/2°

SCALE DO NOT SCALE

MAXIMUM ALLOWABLE TOLERANCES HAVE BEEN DETERMINED AND ANY DEVIATIONS WILL BE CAUSE FOR REJECTION. REMOVE ALL BURRS & SHARP EDGES

REQ. PER UNIT	MODEL	SECTION	ASS'Y. NO.	DATE
1	GPT-10K(C)AC			1-20-62

USED ON

REQ. ITEM	PART NO.	DESCRIPTION	SYMBOL
		THE TECHNICAL MATERIEL CORP. MAMARONECK, NEW YORK	
		LETTERING, BATTERY SUPPLY CHASSIS	
		G.D.L. RUZZO SAM	
		DRAWN CHECKED FINAL APPROVAL	
		[Signature] [Signature] LD-1052 A	
		ELEC. DES. APP. MECH. DES. APP. SHEET OF	