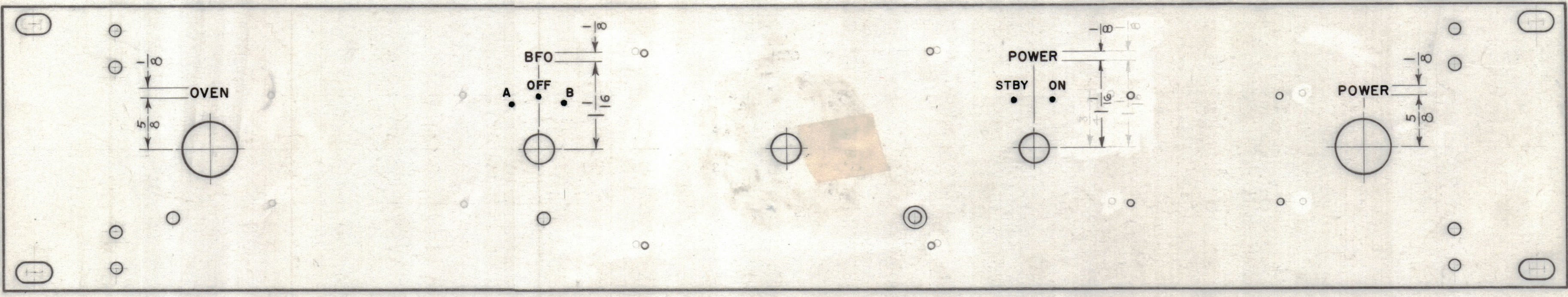
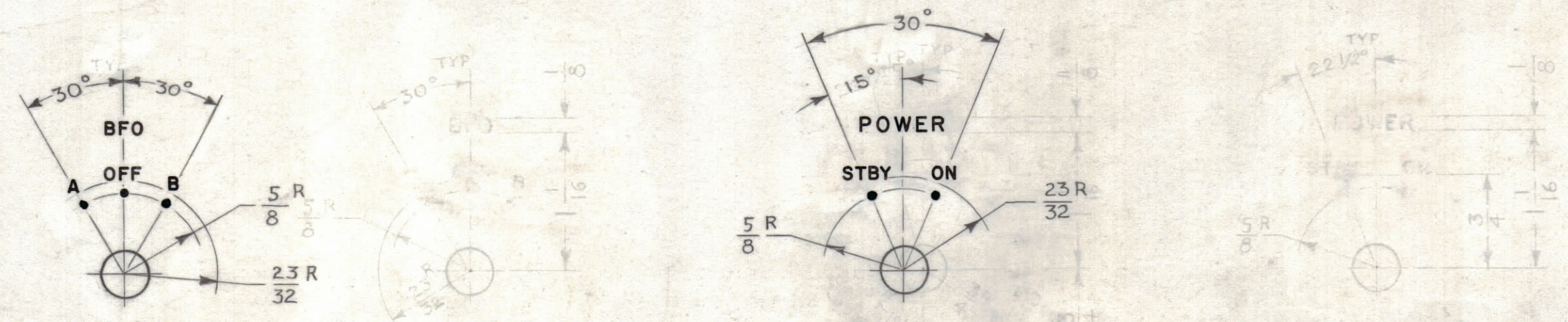


REVISIONS						
ZONE	SYM	DESCRIPTION	DATE	E.M.N. NO.	DRAFT	CHKD APPD

TOP-TOP



FRONT OF PANEL



HEIGHT OF LETTERS	DEPTH OF STROKE	WIDTH OF STROKE
1/8	.010	.020
3/32	.010	.015
DOTS	.010	1/16 DIA

NOTES:

1. ALL ENGRAVING TO BE 3/32 HIGH WHITE GOTHIC, AS SHOWN, ON CHAMFER UNLESS OTHERWISE SPECIFIED.
2. ALL LETTER GROUPS TO BE CENTERED ON HOLES.
3. ALL LETTERING & DOTS TO BE WHITE FILLED.

REF: MS-2900 (4)

REQ'D.	ITEM	PART NUMBER	DESCRIPTION	SYMBOL
J. STRUMER LIST OF MATERIAL				
MATERIAL		THE TECHNICAL MATERIEL CORP. MAMARONECK, NEW YORK		
FINISH		TITLE ENGRAVING, FRONT PANEL		
UNLESS OTHERWISE SPECIFIED DIMENSIONS ARE IN INCHES AND INCLUDE CHEMICALLY APPLIED OR PLATED FINISHES		DRAWN <i>H. Peter</i>	DATE 1/10/63	FINAL APPROVAL <i>BP</i>
DECIMALS .X ± .05 .XX ± .01 .XXX ± .005		CHECKED <i>JLB</i>	DATE 3-12-63	DATE 3-14-63
FRACTIONS ± 1/64 ANGLES ± 0° 30'		ELECT. DES. <i>JMA</i>	DATE 3-12-63	DATE 3-12-63
TOLERANCES		MECH. DES. <i>D. Nathani</i>	DATE 3-12-63	DATE 3-12-63
THE CONTENTS OF THIS DRAWING ARE THE EXCLUSIVE PROPERTY OF THE TECHNICAL MATERIEL CORP. ITS UNAUTHORIZED USE OR REPRODUCTION IN WHOLE OR IN PART IS STRICTLY FORBIDDEN.		SHEET 1 OF 2		

Q'TY./UNIT	MODEL USED ON	ASS'Y. NO.
SCALE 1:1	CODE	
NOTES		

LD-1050