

THE CONTENTS OF THIS DRAWING ARE THE EXCLUSIVE PROPERTY OF THE TECHNICAL MATERIEL CORP. ITS UNAUTHORIZED USE OR REPRODUCTION IN WHOLE OR IN PART IS STRICTLY FORBIDDEN.

REQ. PER UNIT

1 GPT-10K

USED ON

MODEL

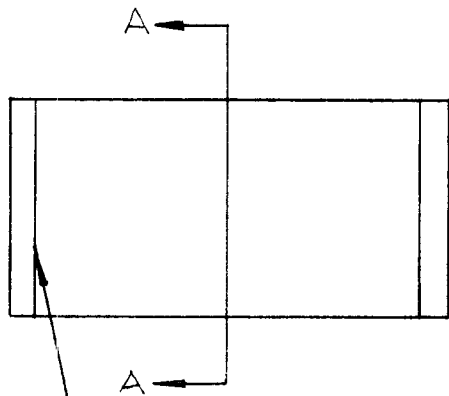
ASS'Y. NO.

DATE

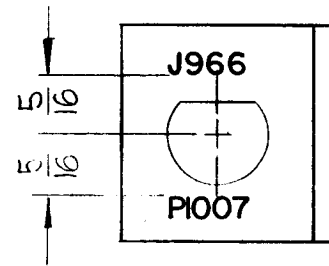
AX-238

3-5-62

LD-1042



LETTERING TO BE PLACED ON THE INSIDE OF LIP AS SHOWN IN SECTION A-A.



SECTION "A"-A"

ALL LETTERING TO BE 1/8" HIGH BLACK GOTHIC.

MARKING PROCESS: AS PER TMC SPECIFICATION S-727

REF: MS-2813(1)

REQ.	ITEM	PART NO.	F. BUDETTI DESCRIPTION			SYMBOL
			THE TECHNICAL MATERIEL CORP. MAMARONECK, NEW YORK			
			LETTERING, CONNECTOR			
			MOUNTING BRACKET			
SYM	DESCRIPTION	DATE	CH. NO.	DRAFTS	CHECKER	ENG. APP.
UNLESS OTHERWISE SPECIFIED: DIMENSIONS ARE IN INCHES TOLERANCES ON FRAC. ± 1/64 DEC. ± .05 ANGLES ± 1/2°		SCALE: MAXIMUM ALLOWABLE TOLERANCES HAVE BEEN DETERMINED AND ANY DEVIATIONS WILL BE CAUSE FOR REJECTION. REMOVE ALL BURRS AND SHARP EDGES				
					GG	fw
					DRAWN	CHECKED
					LD-1042	LD-1042
					ELEC. DES. APP.	MECH. DES. APP.