

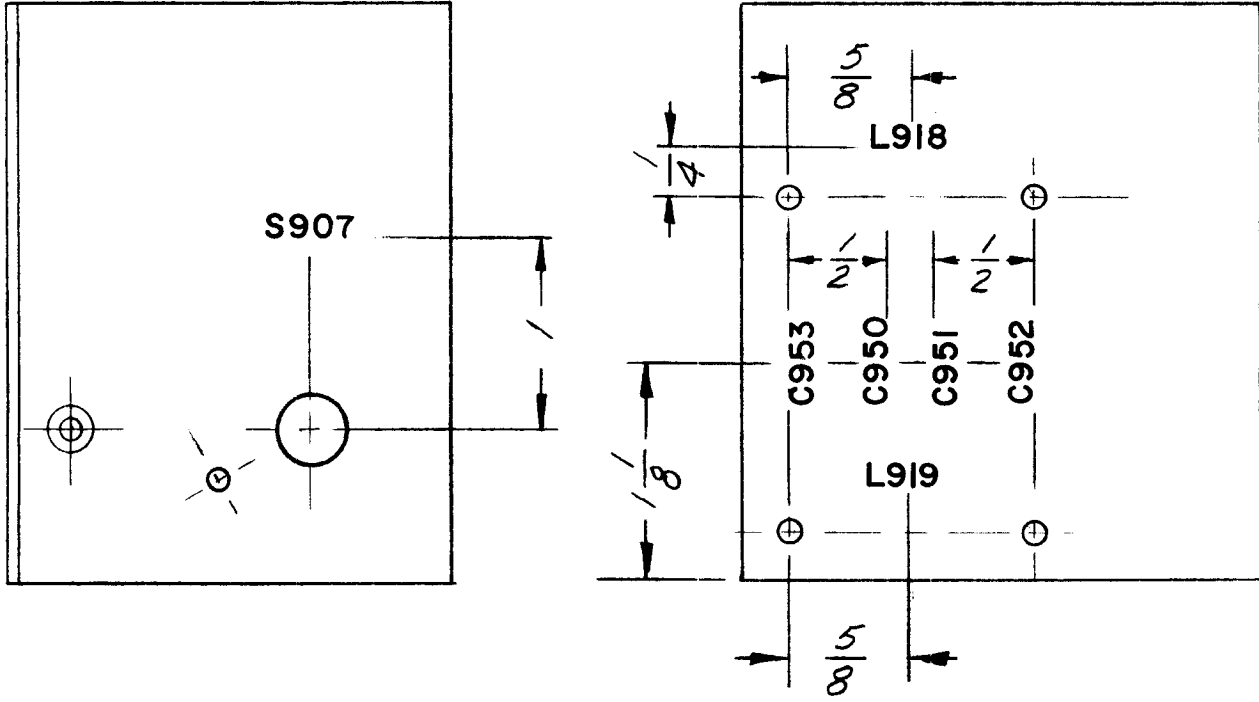
THE CONTENTS OF THIS DRAWING ARE THE EXCLUSIVE PROPERTY OF THE TECHNICAL MATERIEL CORP. ITS UNAUTHORIZED USE OR REPRODUCTION IN WHOLE OR IN PART IS STRICTLY FORBIDDEN.

REQ. PER UNIT	USED ON			LD-1009	A
	MODEL	ASS'Y. NO.	DATE		
1	KIT-113		12-6-61		

MARKING PROCESS: AS PER TMC SPECIFICATION S-727

LETTERING TO BE $\frac{1}{8}$ " HIGH, BLACK GOTHIC

LETTERING GROUPS TO BE CENTERED ON HOLES OR INDICATING LINES.



REF: MS-2753

REQ.	ITEM	PART NO.	DESCRIPTION			SYMBOL
			THE TECHNICAL MATERIEL CORP. MAMARONECK, NEW YORK			
			STOCK SIZE			
A			S907 WAS S902, C953 WAS C949. SPLINE NUT ADDED			LETTERING, BRACKET, SWITCH & DECOUPLING
			MATERIAL			
SYM	DESCRIPTION	DATE	CH. NO.	DRAFTS	CHECKER	ENG. APP.
UNLESS OTHERWISE SPECIFIED: DIMENSIONS ARE IN INCHES TOLERANCES ON FRAC. $\pm 1/64$ DEC. $\pm .005$ ANGLES $\pm 1/2^\circ$		SCALE: MAXIMUM ALLOWABLE TOLERANCES HAVE BEEN DETERMINED AND ANY DEVIATIONS WILL BE CAUSE FOR REJECTION. REMOVE ALL BURRS AND SHARP EDGES				
					TYPE & TEMPER	HEAT TREAT. SPEC.
					FINISH & SPEC. NO.	
					DRAWN	CHECKED
					ELEC. DES. APP.	MECH. DES. APP.
						LD-1009 A