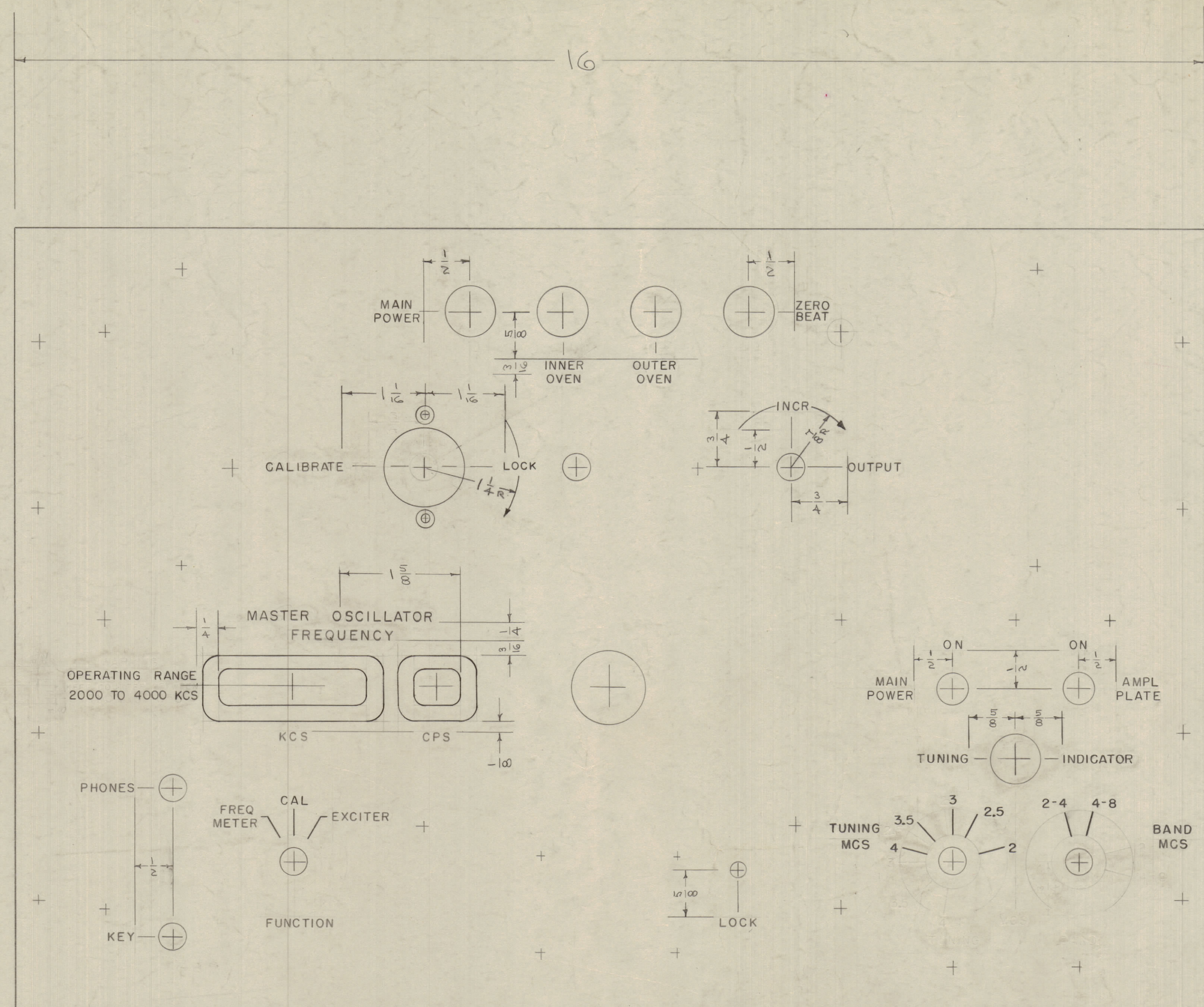


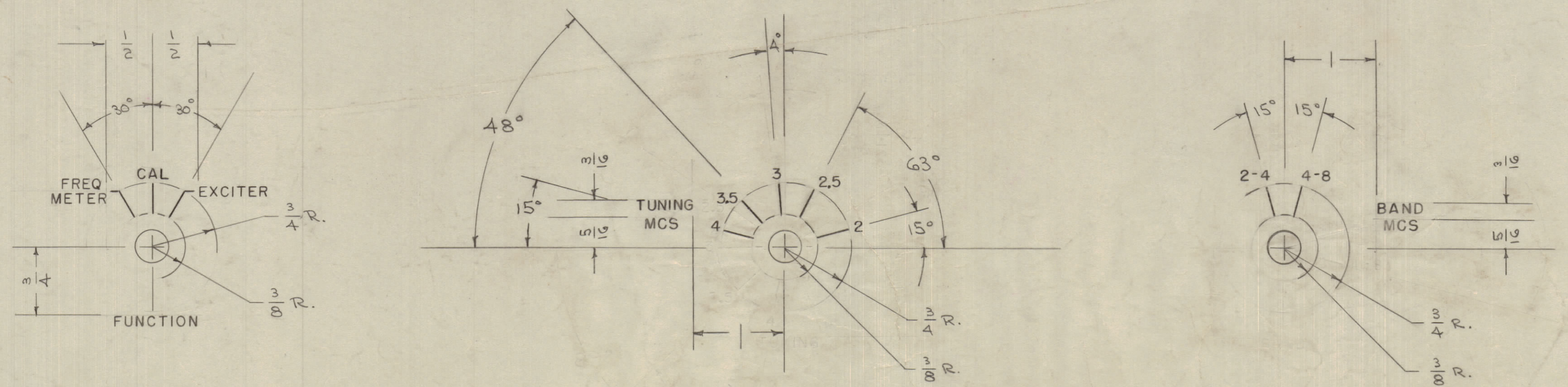
IF IT IS FOUND DESIRABLE TO CHANGE ANY TOLERANCE OR OTHER DETAIL SPECIFIED ON THIS DRAWING NOTIFY THE PURCHASER PROMPTLY.
 MAXIMUM ALLOWABLE TOLERANCES HAVE BEEN DETERMINED AND DEVIATIONS WILL BE CAUSE FOR REJECTION. REMOVE ALL BURRS AND SHARP EDGES

10 1/2



NOTE
 "MASTER OSCILLATOR FREQUENCY" TO BE 3/16" HIGH GOTHIC, WHITE FILLED
 "OPERATING RANGE" TO BE 1/8" HIGH GOTHIC, RED FILLED -
 "2000 TO 4000 KCS" TO BE 1/8" HIGH GOTHIC, RED FILLED.
 ALL OTHER LETTERS AND NUMERALS TO BE 1/8" HIGH GOTHIC, WHITE FILLED

LETTER HEIGHT	DEPTH OF STROKE	WIDTH OF STROKE
3/32	.010	.015
1/8	.010	.020
3/16	.010	.025



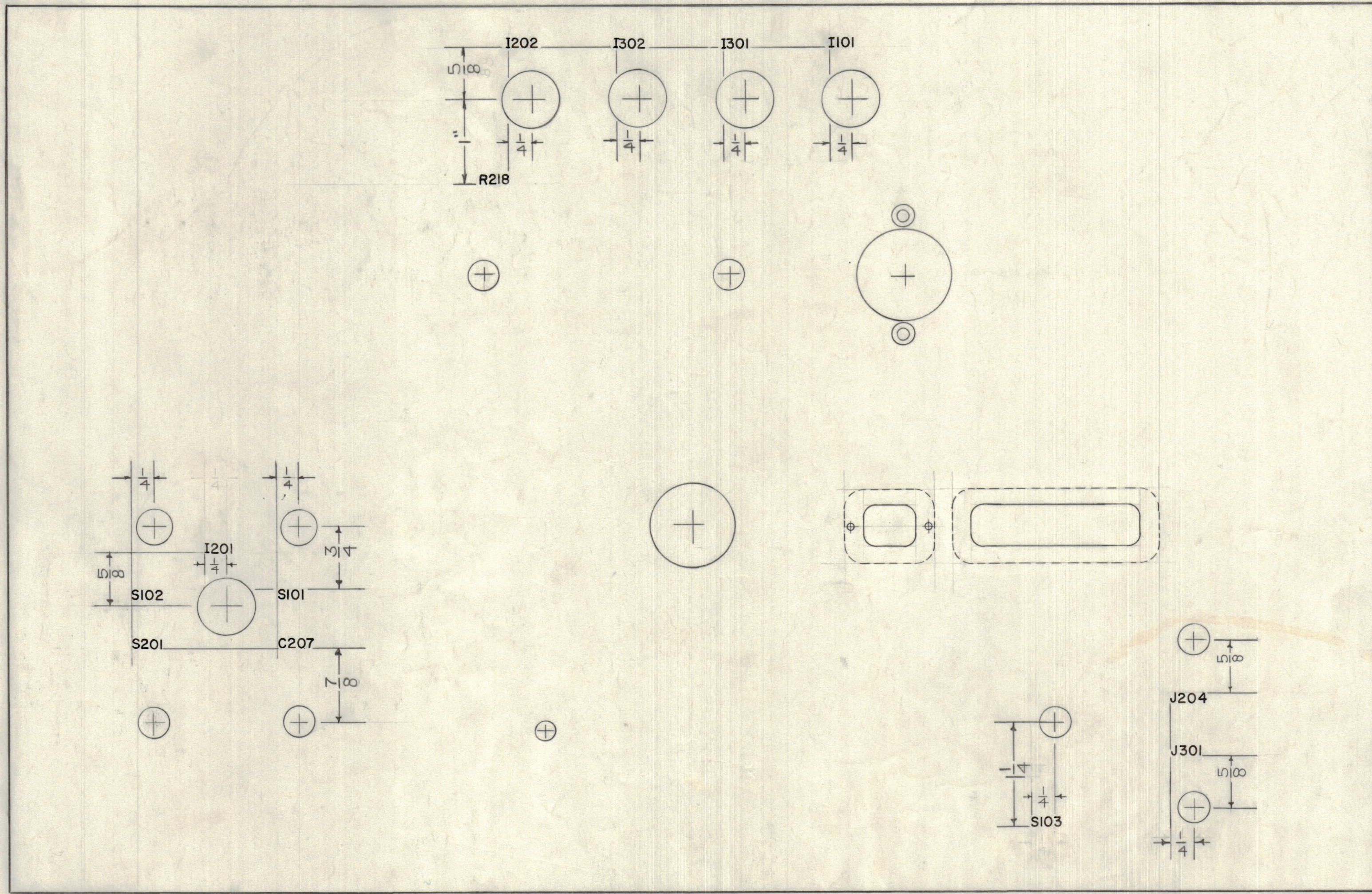
ISSUE	ITEM	CHANGED FROM	DATE	CN. NO.	DRAFTS	CHECKER	ENG. APP.
F	1	CORNER RADII ADDED TO RECTANGULAR CUTOUSES	2-20-53	8272			
E	2	ENGRAVING WAS L.E.T.	9/15/54	5542	LA	UB	
		SHEET 2 ADDED					
D	1	CALIBRATE MOVES LOOK B TO ADDED	7/14/54	1			
C	1	ENG. DETAIL ADDED	7/29/54	3			
B	1	WARNING NOTE REPLACED BY OPERATING RANGE NOTE	1/18/55	2			
A	1	1/2 ON MAIN POWER & ZERO BEAT WAS 5/8	9/15/54	1	C.D.D.		

REF: DWG. NO. MS-550 (CASE); MS-554 (RACK)

REQ. ITEM	PART NO.	DESCRIPTION	SYMBOL
THE TECHNICAL MATERIEL CORP. MAMARONECK, NEW YORK			
ENGRAVING, FRONT PANEL			
P M O			
TYPE & TEMPER		CDD 8-10-54	A.J.J.
DRAWN			
HEAT TREAT. SPEC.		CHECKED	FINAL APPROVAL
FINISH & SPEC. NO.		SHEET 10F 2	LD-192

MODEL	PROJECT NO.	ASSY. NO.	DATE
PMO-2	285		8-10-54

LD-192



LETTERING TO BE 1/8" HIGH BLACK GOTHIC
 MARKING PROCESS: AS PER TMC SPECIFICATION §727

LD-192
F

REV	DATE	BY	CHKD	APP
F	2-20-62	8272		
E	9-15-61	8442	EE	
SYM	ZONE	DESCRIPTION	DATE	CH. NO.
UNLESS OTHERWISE SPECIFIED:		SCALE		
DIMENSIONS ARE IN INCHES		MAXIMUM ALLOWABLE TOLERANCES HAVE BEEN DETERMINED AND ANY DEVIATIONS WILL BE CAUSE FOR REJECTION. REMOVE ALL BURRS & SHARP EDGES		
TOLERANCES ON FRACTIONS ± 1/64		DECIMALS ± .005		ANGLES ± 1/2°

REQ. ITEM	PART NO.	DESCRIPTION	SYMBOL
1	PMO-1	THE TECHNICAL MATERIEL CORP. MAMARONECK, NEW YORK	
1	PMO-2	LETTERING, FRONT PANEL, REAR	
MATERIAL		G.G.	
TYPE & TEMPER			
HEAT TREAT. SPEC.			
FINISH & SPEC. NO.			
ELEC. DES. APP.			
MECH. DES. APP.			
SHEET 2 OF 2			