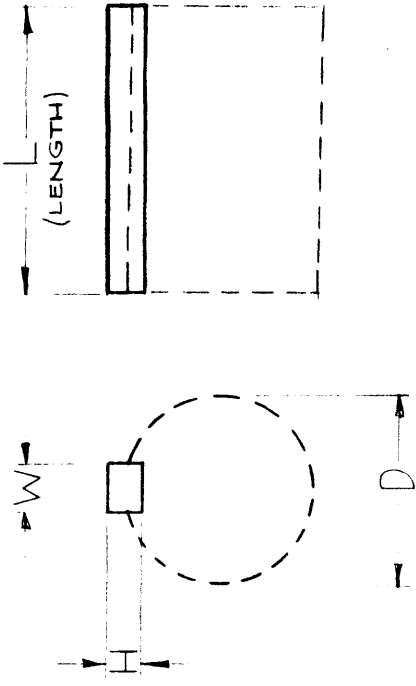


STANDARD DRAWING

KY-103



TMC Code	NOM Dimension W	NOM Dimension H	For Shaft Diameter D
2	1/8	3/32	1/2 - 9/16
3	3/16	1/8	5/8 - 7/8
4	1/4	3/16	15/16 - 1-1/4
5	5/16	1/4	1-5/16 - 1-3/8
6	3/8	1/4	1-7/16 - 1-3/4
8	1/2	3/8	1-13/16 - 2-1/4
10	5/8	7/16	2-5/16 - 2-3/4
12	3/4	1/2	2-7/8 - 3-1/4
14	7/8	5/8	3-3/8 - 3-3/4
16	1	3/4	3-7/8 - 4-1/2
20	1-1/4	7/8	4-3/4 - 5-1/2
24	1-1/2	1	5/34 - 6
1	1/8	1/16	1/4 (NOT A STD. KEY)
8A	1/2	1/4	1-7/8 - 2 (NOT A STD KEY)
4A	1/4	1/8	.750-1

TMC PARTNUMBER TO BE IN FOLLOWING FORM:

KY-103 - 8 - 2.500 - B

BASIC TMC PART NO	DIM W IN 1/16ths SEE CHART	LENGTH (L) (IN INCHES) LENGTH MUST NOT BE LESS THAN 2W.	MATERIAL B = BRASS (HARD) SS = STAINLESS STEEL
-------------------	-------------------------------	--	--

NOTICE TO PERSONS RECEIVING THIS DRAWING

THE TECHNICAL MATERIEL CORPORATION claims proprietary right in the material disclosed herein. This drawing is issued in confidence for engineering information only and may not be reproduced or used to manufacture anything shown herein without permission from THE TECHNICAL MATERIEL CORPORATION to the user. This drawing is loaned for mutual assistance and is subject to recall at any time.

Property of:
THE TECHNICAL MATERIEL CORPORATION
MAMARONECK, NEW YORK

ISSUE ITEM	CHANGED FROM	DATE	CH. NO.	DRAFTS	CHECKER	ENG. APP.
D	SHAFT SHOWN DOTTED LINE 8A ADDED	10/29/65	15010	H.V.V.	JOB	JOB
C	TMC CODE "8A" ADD.	7-13-64	11726	JSB	JOB	JOB
B	ON PART NO. FORM EXAMPLE ADDED TO "LENGTH"	1-25-63	8065	CF	JOB	JOB
A	ON CHART TMC CODE 1 + ITS DIMS. WERE ADDED.	4/26/61	4768	DM	JOB	JOB

TOLERANCES
DEC. DIM. ±
FRAC. DIM. ±
ANGULAR DIM. ±

MAXIMUM ALLOWABLE TOLERANCES HAVE BEEN DETERMINED AND ANY DEVIATIONS WILL BE CAUSE FOR REJECTION.
REMOVE ALL BURRS AND SHARP EDGES

REQ. ITEM	PART NO.	DESCRIPTION	SYMBOL
	STOCK SIZE	THE TECHNICAL MATERIEL CORP. MAMARONECK, NEW YORK	
	MATERIAL	KEY, FLAT	
	TYPE & TEMPER	HEAT TREAT. SPEC	
	FINISH & SPEC. NO.	ELEC. DES. APP. MECH. DES. APP.	

D.D. Murphy
J.C. Bielecki

DRAWN	CHECKED	FINAL APPROVAL
		KY-103

STANDARD DRAWING