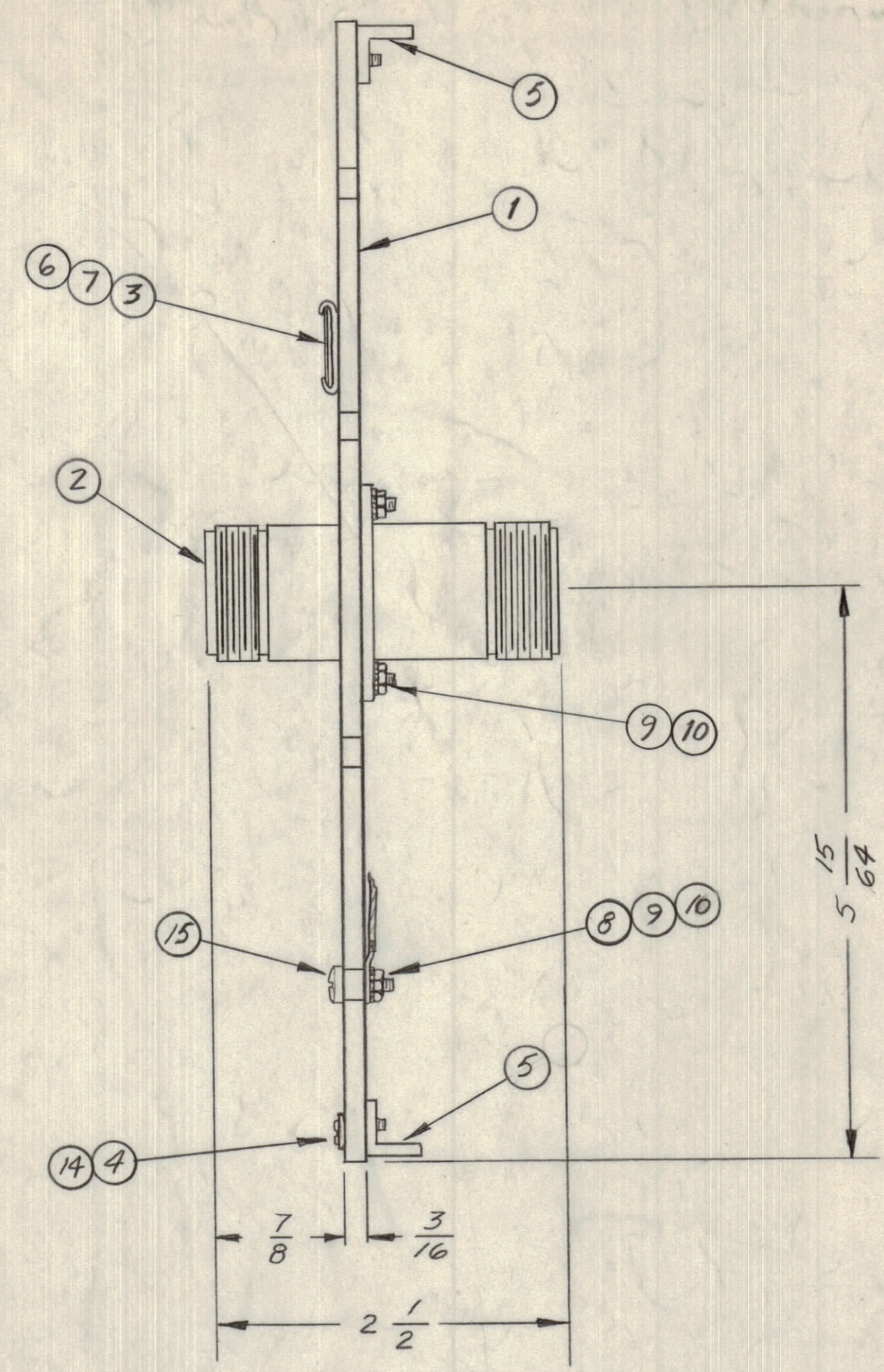
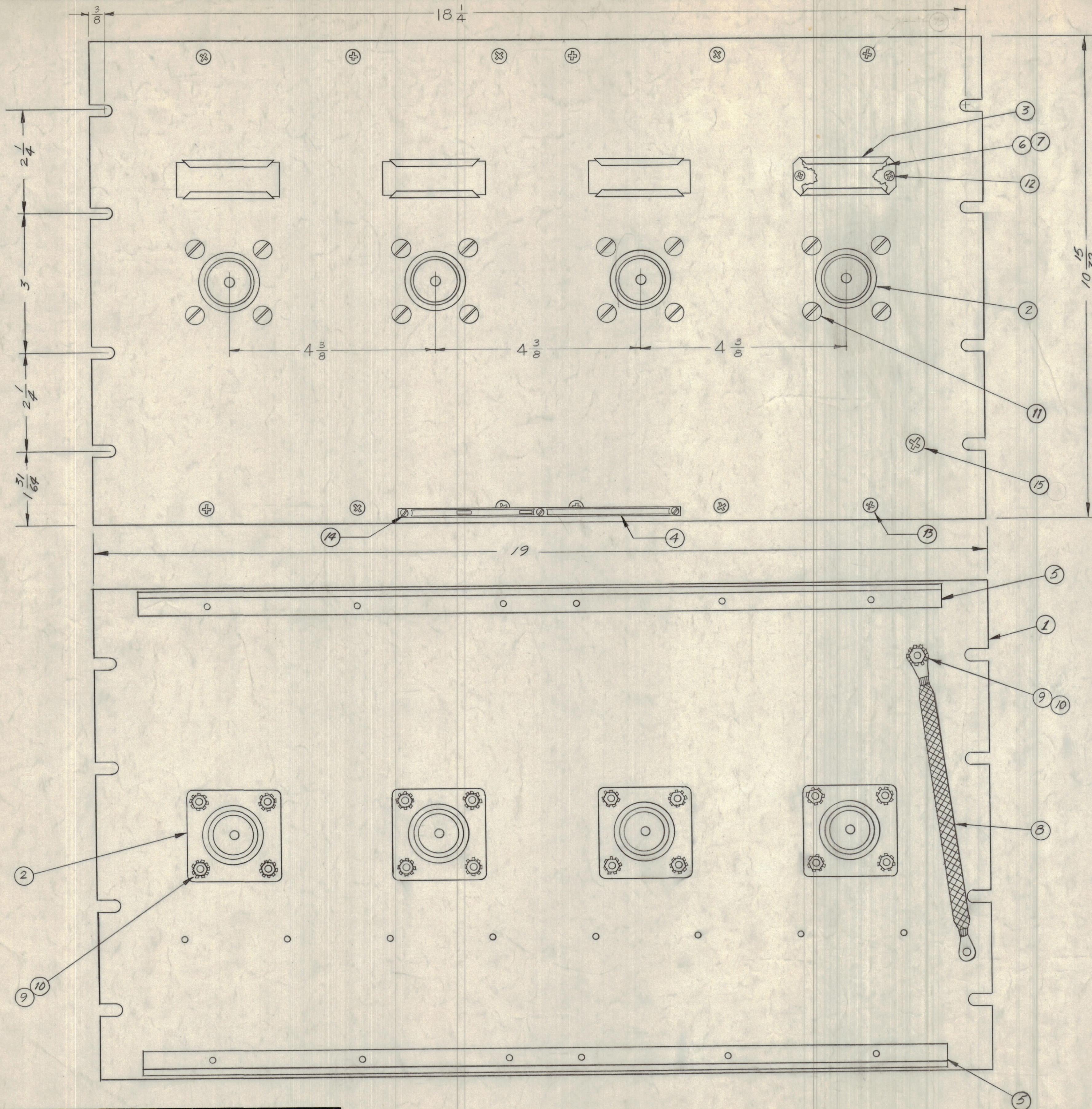


NOTICE TO PERSONS RECEIVING THIS DRAWING  
 THE TECHNICAL MATERIEL CORPORATION claims proprietary right in the material disclosed hereon. This drawing is issued in confidence for engineering information only and may not be reproduced or used to manufacture any thing shown hereon without permission from THE TECHNICAL MATERIEL CORPORATION to the user. This drawing is loaned for mutual assistance and is subject to recall at any time.  
 Property of:  
 THE TECHNICAL MATERIEL CORPORATION  
 MAMARONECK, NEW YORK



MATERIAL : ALUMINUM  
 FINISH : TMC SMOOTH GRAY,  
 SEMI-GLOSS ENAMEL.

REQ. ITEM	PART NO.	DESCRIPTION	SYMBOL
X 16	S-721	TEST PROCEDURE	
1 15	SCFP1032BN8	SCREW, MACHINE	
3 14	SFB0256SN3	SCREW, MACHINE	
12 13	SCFP0632BN5	SCREW, MACHINE	
8 12	SCFP0348BN4	SCREW, MACHINE	
16 11	SCFP1032BN9	SCREW, MACHINE	
17 10	NTH1032BN12	NUT, HEX	
17 9	LWE10MRN	WASHER, LOCK, EXTERNAL	
1 8	CA-409-69-600	CABLE ASSY, GROUND	
4 7	PX-623-1	GUARD, PLASTIC	
4 6	PR-103-1	TAB, PAPER	
2 5	PM-490	BRACE, PANEL	
1 4	NP-414-	NAMEPLATE, IDENTIFICATION	
4 3	MS-2669	HOLDER, CARD	
4 2	JJ-220	CONNECTOR, RECEPTACLE	
1 1	MS-2672	PANEL, FRONT	

SYM	ZONE	DESCRIPTION	DATE	CH. NO.	DRAFTS	CHECKER	ENG. APP.
C	B2	5882 MOUNTING DIMS ADDED; ITEM (6) ADDED	3-9-63	8496			
B	B3	ITEM (9) WAS NP-414-1; (12) WAS SCFP0348BN4	2-2-62	6294	LL		
A	A3	ITEM (6) NTH1032BN10, DELETED; ITEM (10) WAS 16 REQ. ITEM (4) WAS NP-250	1-5-62	6116	LL		

UNLESS OTHERWISE SPECIFIED:  
 DIMENSIONS ARE IN INCHES  
 TOLERANCES ON FRACTIONS ± 1/64 DECIMALS ± .005 ANGLES ± 1/2°  
 SCALE: MAXIMUM ALLOWABLE TOLERANCES HAVE BEEN DETERMINED AND ANY DEVIATIONS WILL BE CAUSE FOR REJECTION. REMOVE ALL BURRS & SHARP EDGES

REQ. PER UNIT	MODEL	SECTION	ASSY. NO.	DATE
	JPD-9F9X4			
	USED ON			
	FINISH & SPEC. NO.			

THE TECHNICAL MATERIEL CORP. MAMARONECK, NEW YORK			
JACK PATCH PANEL, LC TO LC			
MATERIAL	TYPE & TEMPER	HEAT TREAT, SPEC.	
WR			
DRAWN	CHECKED	FINAL APPROVAL	
		JPD-9F9X4	
ELEC. DES. APP.	MECH. DES. APP.	SHEET	OF

JPD-9F9X4