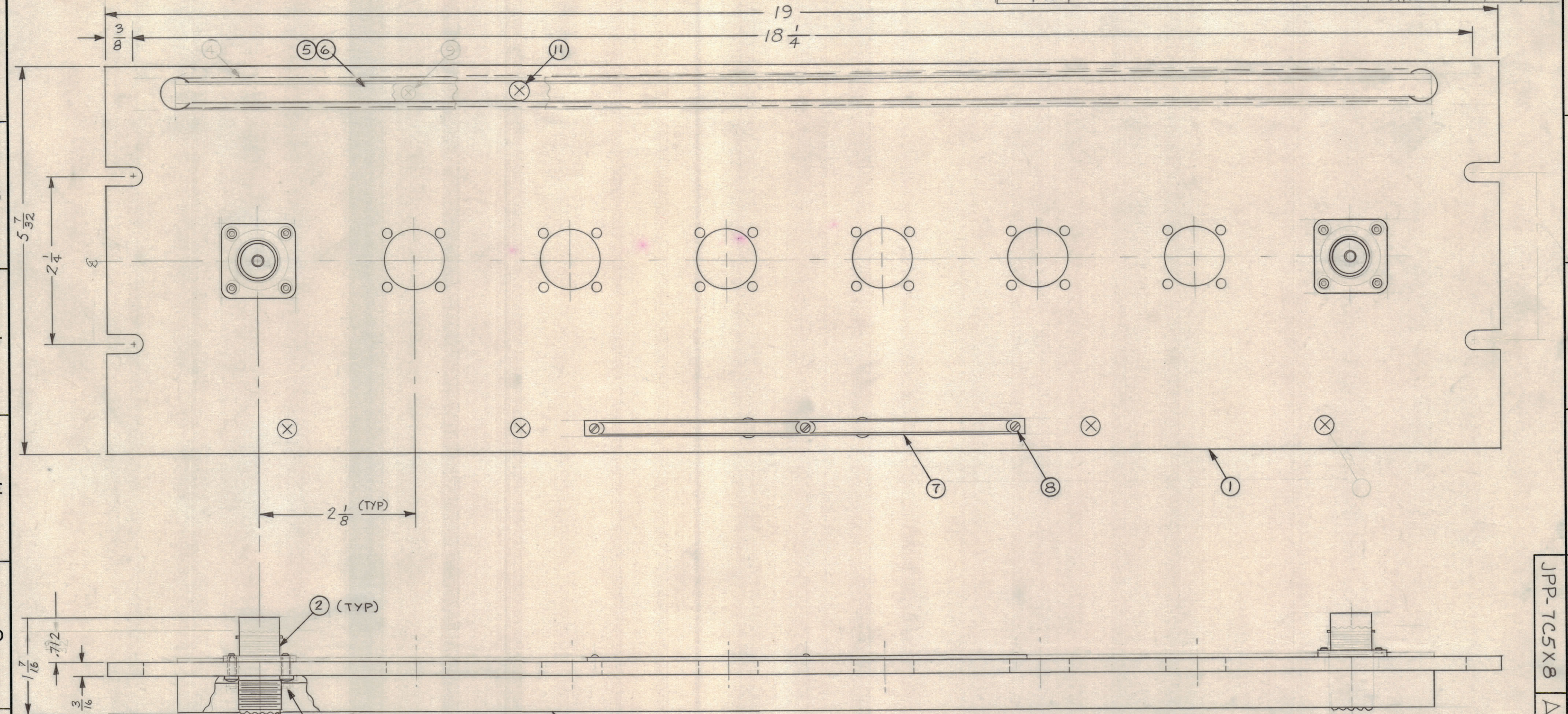


REVISIONS					
ZONE	SYM	DESCRIPTION	DATE	E.M.N. NO.	DRAFT
A		ITEM 4 & ITEM 9 DELETED, PICTORIAL UPDATED	5-3-84	22060	GD-L



JPP-7C5X8
A

REQ'D.	ITEM	PART NUMBER	DESCRIPTION	SYMBOL
X	13	S-721 40 BNB	TEST PROCEDURE	
32	12	LWE 04 MRN	WASHER, LOCK, EXTERNAL	
	11	SCFP0632BN5	SCREW, MACHINE	
	10	SCBP0440BN5	SCREW, MACHINE	
	9	SCFP0348BN3	SCREW, MACHINE	
	8	SFB0256 SN3	SCREW, THREAD CUTTING	
	7	NP-414	NAMEPLATE	
	6	PX-396-17	GUARD, TAB	
	5	PR-101-17	TAB, PAPER	
	4	MS-1184	WASHER, HARD	
	3	PM-490	BRACE, PANEL	
	2	JJ-252	RECEPTACLE, CONNECTOR	
	1	MS-3029	PANEL, FRONT, MACHINING	

MATERIAL		THE TECHNICAL MATERIEL CORP.	
ALUMINUM		MAMARONECK, NEW YORK	
FINISH TMC SMOOTH GRAY SEMI-GLOSS ENAMEL		TITLE JACK PATCH PANEL "UHF" TO "C" UHF (E)	
UNLESS OTHERWISE SPECIFIED DIMENSIONS ARE IN INCHES AND INCLUDE CHEMICALLY APPLIED OR PLATED FINISHES		DRAWN M. TANTILLO	DATE 10-30-62
DECIMALS .X ± .05 .XX ± .01 .XXX ± .005		CHECKED <i>[Signature]</i>	DATE 11/6/62
FRACTIONS ± 1/64 ANGLES ± 0° 30'		ELECT. DES. <i>[Signature]</i>	DATE 11/6/62
TOLERANCES		MECH. DES. <i>[Signature]</i>	DATE 11/6/62
THE CONTENTS OF THIS DRAWING ARE THE EXCLUSIVE PROPERTY OF THE TECHNICAL MATERIEL CORP. ITS UNAUTHORIZED USE OR REPRODUCTION IN WHOLE OR IN PART IS STRICTLY FORBIDDEN.		FINAL APPROVAL <i>[Signature]</i>	DATE
NOTES		JPP-7C5X8	
		SHEET	REV. LTR.

NOTICE TO PERSONS RECEIVING THIS DRAWING

THE TECHNICAL MATERIEL CORPORATION claims proprietary right in the material disclosed hereon. This drawing is issued in confidence for engineering information only and may not be reproduced or used to manufacture anything shown hereon without permission from THE TECHNICAL MATERIEL CORPORATION to the user. This drawing is loaned for mutual assistance and is subject to recall at any time.

Property of:
THE TECHNICAL MATERIEL CORPORATION
MAMARONECK, NEW YORK