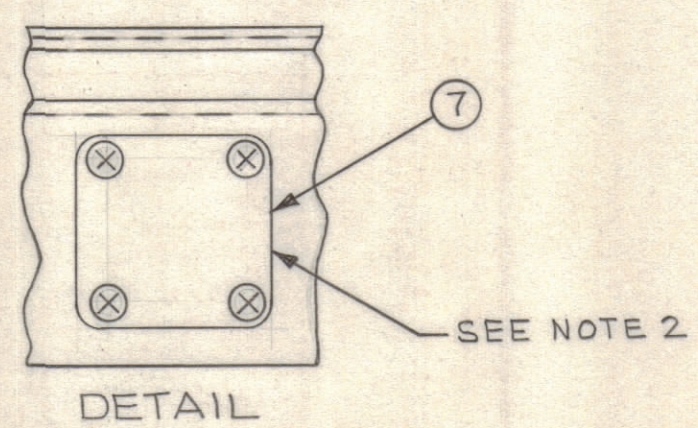
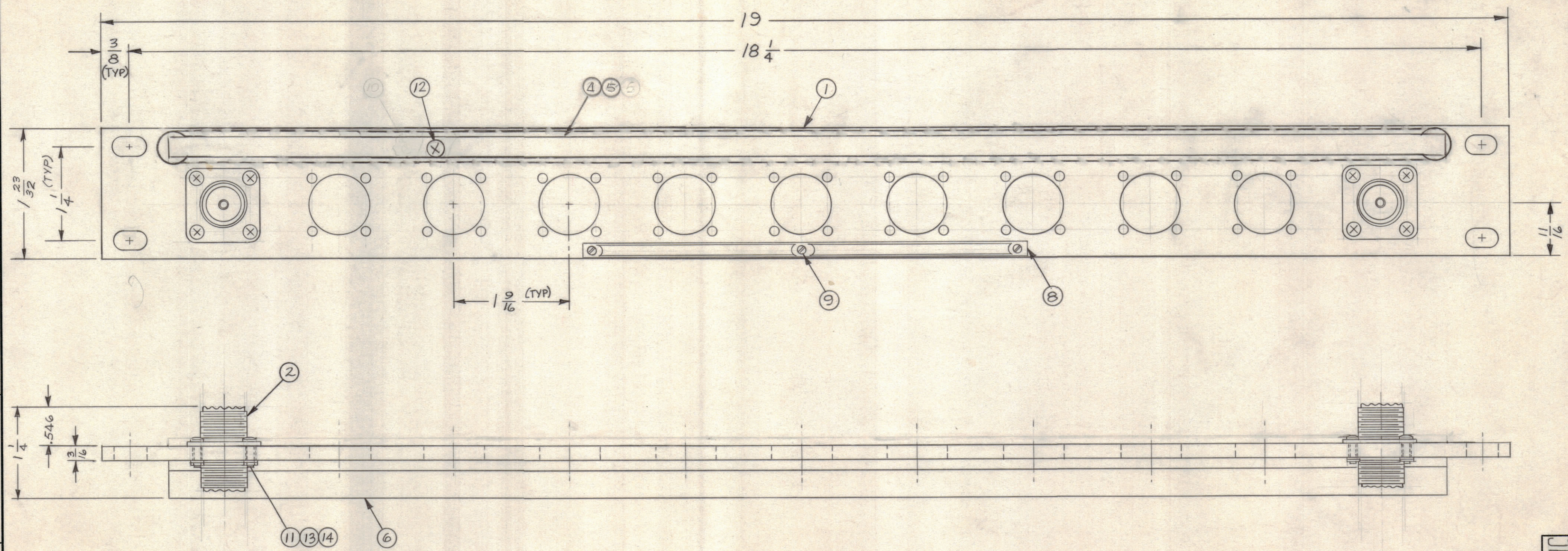


REVISIONS					
ZONE	SYM	DESCRIPTION	DATE	E.M.N. NO.	APPRO
B2 AB7	A	ITEM 7 WAS "MS-3015", MODELS ON CHART WERE "QDP"	3-11-63	8492	RC
	B	ITEM 3, SEE 10 DEL. PICTORIAL UPDATED	3-29-63	22042	DL



- NOTE:
- CONNECTORS ARE MOUNTED FROM LEFT TO RIGHT.
  - WHEN CONNECTOR MOUNTING HOLES ARE NOT UTILIZED COVER BLANKS (ITEM 7) ARE TO BE MOUNTED ON FACE OF FRONT PANEL.
  - REFER TO CHART FOR APPLICATION OF COVER BLANK (ITEM 7) WHEN REQUIRED.

MODEL	QUAN. ITEM 2	QUAN. ITEM 7
JPP-7A7X11	11	0
JPP-7A7X10	10	1
JPP-7A7X9	9	2
JPP-7A7X8	8	3
JPP-7A7X7	7	4
JPP-7A7X6	6	5
JPP-7A7X5	5	6
JPP-7A7X4	4	7
JPP-7A7X3	3	8
JPP-7A7X2	2	9
JPP-7A7X1	1	10

REQ'D.	ITEM	PART NUMBER	DESCRIPTION	SYMBOL
X	15	S-721	TEST PROCEDURE	
44	14	NTH0440BN8	NUT HEXAGON	
44	13	LWE 04 MRN	WASHER, LOCK, EXTERNAL	
6	12	SCFPO632BN5	SCREW, MACHINE	
44	11	SCBPO440BN9	SCREW, MACHINE	
4	10	SCFP0348BN3	SCREW, MACHINE	
3	9	SFB0256SN3	SCREW, THREAD CUTTING	
1	8	NP-414	NAMEPLATE, IDENTIFICATION	
SEE CHART	7	MS-3015-1	COVER, BLANK QDS	
1	6	PM-486	BRACE, PANEL	
1	5	PX-396-17	GUARD, TAB	
1	4	PR-19-17	TAB, PAPER	
3	3	NS-134	HOLDER, CARD	
SEE CHART	2	JJ-272	CONNECTOR, RECEPTACLE	
1	1	MS-1233	MACHINING, FRONT PANEL	

MARTINENGO		LIST OF MATERIAL	
MATERIAL	ALUMINUM	THE TECHNICAL MATERIEL CORP. MAMARONECK, NEW YORK	
FINISH	TMC SMOOTH GRAY SEMI-GLOSS ENAMEL	TITLE JACK PATCH PANEL UHF (F) TO UHF (F)	
UNLESS OTHERWISE SPECIFIED DIMENSIONS ARE IN INCHES AND INCLUDE CHEMICALLY APPLIED OR PLATED FINISHES		DRAWN M. TANTILLO	DATE 10-31-62
DECIMALS .X ± .05 .XX ± .01 .XXX ± .005		CHECKED	DATE 11/6/62
FRACTIONS ± 1/64 ANGLES ± 0° 30'		ELECT. DES.	DATE 11/6/62
TOLERANCES		MECH. DES.	DATE 11/6/62
THE CONTENTS OF THIS DRAWING ARE THE EXCLUSIVE PROPERTY OF THE TECHNICAL MATERIEL CORP. ITS UNAUTHORIZED USE OR REPRODUCTION IN WHOLE OR IN PART IS STRICTLY FORBIDDEN.		FINAL APPROVAL BP	
NOTES		DATE 11/6/62	
		SHEET	
		REV. LTR.	

JPP-7A7X11 B