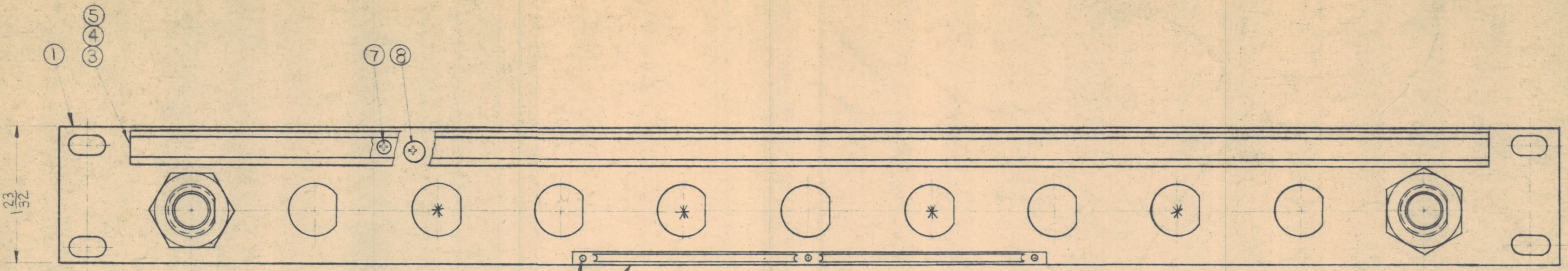
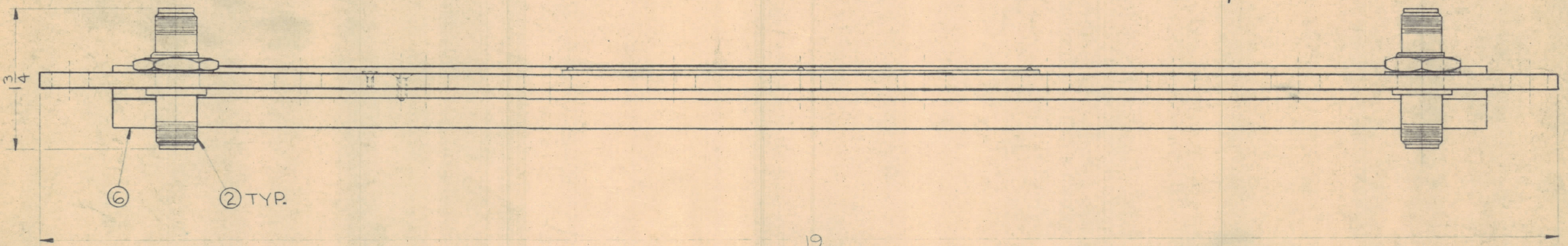


REVISIONS						
ZONE	SYM	DESCRIPTION	DATE	E.M.N. NO.	DRAFT	CHKD
△		SUPERSEDED - DIRECTLY REPLACED BY JPP-6AGXII	3-12-63	8491	RC	JLS



JJ-244, *4 REQ. WITH 7 HOLES BLANKED WITH PLUG BUTTONS ITEM 11



JPP-6AGX4 △

REVISED

MAR 7 1963

SUPERSEDED

DIRECTLY REPLACED BY JPP-6AGXII
3-12-63 RC

NAMEPLATE NOTE:
NP-232 MILITARY NAMEPLATE
NP-414 COMMERCIAL NAMEPLATE

REQ'D.	ITEM	PART NUMBER	DESCRIPTION	SYMBOL
7	11	HB-101-4	BUTTON, PLUG	
1	10	SEE NAMEPLATE NOTE	NAMEPLATE IDENTIFICATION	
3	9	SFPO256SN3	SCREW, THREAD CUTTING	
6	8	SCFR0632BN5	SCREW, MACHINE	
6	7	SCFR0348BN3	SCREW, MACHINE	
1	6	PM-486	BRACE, PANEL	
1	5	PX-396-17	GUARD, TAB	
1	4	PR-101-17	TAB, PAPER	
1	3	MS-1184	HOLDER, CARD	
4	2	JJ-244	ADAPTOR, CONNECTOR	
1	1	MS-2954	MACHINING, FRONT PANEL	

MATERIAL		LIST OF MATERIAL	
ALUMINUM		THE TECHNICAL MATERIEL CORP. MAMARONECK, NEW YORK	
FINISH 5115 TMC SMOOTH GREY ENAMEL		TITLE PATCH PANEL JACK "N-N"	
UNLESS OTHERWISE SPECIFIED DIMENSIONS ARE IN INCHES AND INCLUDE CHEMICALLY APPLIED OR PLATED FINISHES		DRAWN R. Lurchin	DATE 5-10-62
DECIMALS .X ± .05 .XX ± .01 .XXX ± .005		CHECKED JLS	DATE 5/18/62
FRACTIONS ± 1/64 ANGLES ± 0° 30'		ELECT. DES JLS	DATE 5/18/62
TOLERANCES ± 1/64 ANGLES ± 0° 30'		MECH. DES JLS	DATE 5/18/62
THE CONTENTS OF THIS DRAWING ARE THE EXCLUSIVE PROPERTY OF THE TECHNICAL MATERIEL CORP. ITS UNAUTHORIZED USE OR REPRODUCTION IN WHOLE OR IN PART IS STRICTLY FORBIDDEN.		JPP-6AGX4 A	
		SHEET 1	

FILE AS ORIGINAL

1	JPP-6AGX4	
QTY./UNIT	MODEL USED ON	ASSY. NO.
SCALE	CODE	
DO NOT SCALE		

NOTES