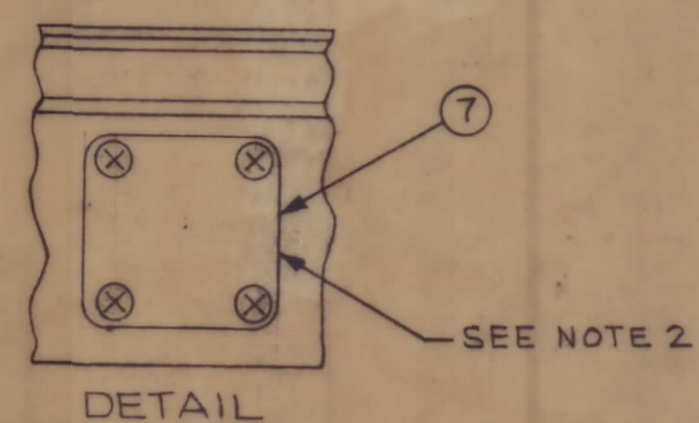
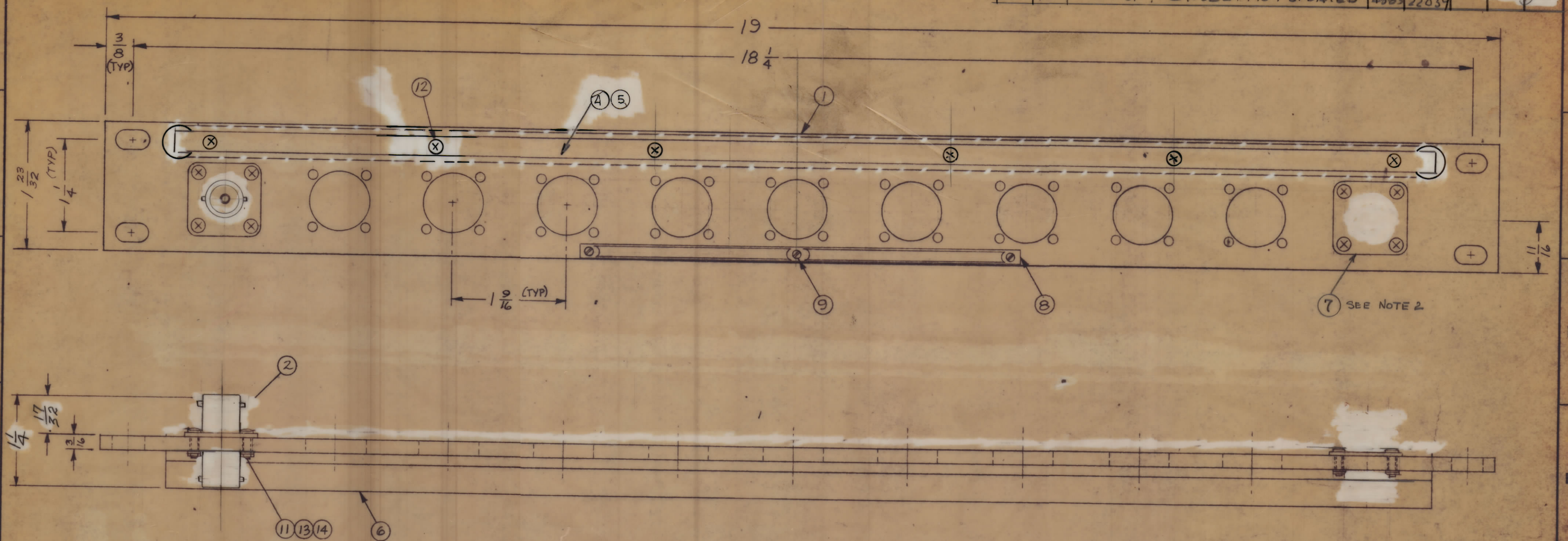


REVISIONS						
ZONE	SYM	DESCRIPTION	DATE	E.M.N. NO.	DRAFT	CRKD
		ORIGINAL RELEASE	8/6/69			
	A	ITEMS 3, 21 DEL. PICT. UPDATED	4-6-69	22039		



MODEL	QUAN. ITEM 2	QUAN. ITEM 7
JPP-5A5X11	11	0
JPP-5A5X10	10	1
JPP-5A5X9	9	2
JPP-5A5X8	8	3
JPP-5A5X7	7	4
JPP-5A5X6	6	5
JPP-5A5X5	5	6
JPP-5A5X4	4	7
JPP-5A5X3	3	8
JPP-5A5X2	2	9
JPP-5A5X1	1	10

- NOTE:
- CONNECTORS ARE MOUNTED FROM LEFT TO RIGHT.
 - WHEN CONNECTOR MOUNTING HOLES ARE NOT UTILIZED COVER BLANKS (ITEM 7) ARE TO BE MOUNTED ON FACE OF FRONT PANEL.
 - REFER TO CHART FOR APPLICATION OF COVER BLANK (ITEM 7) WHEN REQUIRED.

REQ'D.	ITEM	PART NUMBER	DESCRIPTION	SYMBOL
X	15	S-721	TEST PROCEDURE	
44	14	NTH0440BN8	NUT, HEXAGON	
44	13	LWE 04 MRN	WASHER, LOCK, EXTERNAL	
6	12	SCFPO632BN5	SCREW, MACHINE	
44	11	SCBPO440BN9	SCREW, MACHINE	
	10			
3	9	SFB0256SN3	SCREW, THREAD CUTTING	
1	8	NP-878	NAMEPLATE, IDENTIFICATION	
SEE CHART	7	MS-3015-1	COVER, BLANK QDS	
1	6	PM-486	BRACE, PANEL	
1	5	PX-396-17	GUARD, TAB	
1	4	PR-101-17	TAB PAPER	
	3			
SEE CHART	2	JJ-291	CONNECTOR, RECEPTACLE	
1	1	MS-1233	MACHINING, FRONT PANEL	

MARTINENGO		LIST OF MATERIAL	
MATERIAL	ALUMINUM	THE TECHNICAL MATERIEL CORP. MAMARONECK, NEW YORK	
FINISH	TMC SMOOTH GRAY SEMI-GLOSS ENAMEL	TITLE JACK PATCH PANEL C (F) TO C (F)	
UNLESS OTHERWISE SPECIFIED DIMENSIONS ARE IN INCHES AND INCLUDE CHEMICALLY APPLIED OR PLATED FINISHES		DRAWN M. TANTILLO	DATE 8/6/69
TOLERANCES X ± .05 XX ± .01 XXX ± .005		CHECKED [Signature]	DATE 8-6-69
DECIMALS ± 1/64 ANGLES ± 0° 30'		ELECT. DES. [Signature]	DATE 8-6-69
THE CONTENTS OF THIS DRAWING ARE THE EXCLUSIVE PROPERTY OF THE TECHNICAL MATERIEL CORP. ITS UNAUTHORIZED USE OR REPRODUCTION IN WHOLE OR IN PART IS STRICTLY FORBIDDEN.		MECH. [Signature]	DATE 8-6-69

QTY/UNIT	MODEL USED ON	ASSY. NO.
SCALE	CODE	

NOTES

JPP-5A5X11